



SHAW
DESIGN GROUP P.A.
ARCHITECTURE + INTERIOR DESIGN

PO BOX 1147
GULFPORT, MISSISSIPPI 39502

RECEIVED
JUN 26 2017

Chancery Clerk

BY: B.C. Parry D.C.
4:47p

Shaw Design Group, P.A.
Request for Qualifications For:
Professional Services to Design and Construct
a Juvenile Detention Center in
Harrison County, Mississippi

1 of 2



SHAW
DESIGN GROUP, P.A.
ARCHITECTURE+INTERIOR DESIGN

RECEIVED
JUN 28 2017

BY: *B. Co. [Signature]* D.C.
1:47 pm

Shaw Design Group, P.A.
Request for Qualifications For:
Professional Services to Design and Construct
a Juvenile Detention Center in
Harrison County, Mississippi

P.O. BOX 1147
GULFPORT, MISSISSIPPI 39502



SHAW DESIGN GROUP, P.A.
REQUEST FOR QUALIFICATIONS

FOR

PROFESSIONAL SERVICES

TO DESIGN AND CONSTRUCT

JUVENILE DETENTION CENTER

IN

HARRISON COUNTY, MISSISSIPPI



PREPARED FOR



HARRISON COUNTY BOARD OF SUPERVISORS
c/o CHANCERY CLERKS OFFICE
1801 23RD AVENUE
GULFPORT, MS 39501

PREPARED BY



SHAW DESIGN GROUP, P. A.
2404 - 24TH AVENUE
GULFPORT, MS 39501

IN ASSOCIATION WITH

BROWN, MITCHELL AND ALEXANDER, INC.
THE POWER SOURCE, LLC
SIMPKINS AND COSTELLI, INC.
MYRON JAMES & ASSOCIATES, P. A.
DAVID MUSACCHIO

ISSUE DATE June 27, 2017

June 26, 2017

Harrison County Board of Supervisors
Chancery Clerk Office
First Judicial District
1801 23rd Avenue
Gulfport, MS 39501

Ref: **Shaw Design Group, P.A. Request for Qualifications for Professional Services to Design and Construct a Juvenile Detention Center in Harrison County, Mississippi**

To Whom It May Concern:

As requested by your Request for Qualification for Professional Design and Construct Services, the form of Shaw Design Group, P.A. is pleased to respond for your consideration in providing our expertise for this project.

The members of our highly qualified professional design team have discussed your qualification criteria and we all agree that, with our extensive experience in all phases of the design and construction process, we are prepared to provide you with all the necessary services required to ensure your project is completed to your satisfaction, on time and under budget. Our design team is uniquely qualified to pursue this project because:

- o Shaw Design Group, P.A. and our consulting engineers have specific project experience in all activities listed in your Request for Qualifications.
- o Our design team has experience working closely together on similar projects in order to coordinate work purposes of minimizing disruption.



SHAW
DESIGN GROUP P.A.

ARCHITECTURE+INTERIOR DESIGN

CONSULTANTS
FOR
THE

CONSTRUCTED
ENVIRONMENT
SINCE 1906

P.O. BOX 1147
GULFPORT, MISSISSIPPI 39502

2404 24TH AVENUE
PHONE: (228) 864-1202
FAX: (228) 864-2439



June 26, 2017
Harrison County Board of Supervisors

Page 2

- o All staff members have a broad range of experience in a wide variety of projects, including with specific experience and including juvenile detention facilities. We have the capacity to begin work on your project immediately and bring it to a timely completion

The staff available for assignment to the project slightly more than sixty (60) members. This depth of talent assure Harrison County the project can be completed in a timely manner and within any reasonable schedule.

We would appreciate an opportunity to meet with you or the Board of Supervisors to discuss our team's qualifications and capabilities in more detail. We extend an invitation to you to visit our office in order to familiarize yourself, in person, with our facilities, personnel and capabilities.

If you have any questions concerning this statement, please do not hesitate to contact us.

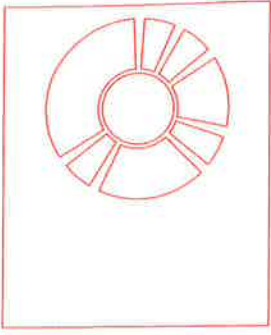
Sincerely,

SHAW DESIGN GROUP, P.A.

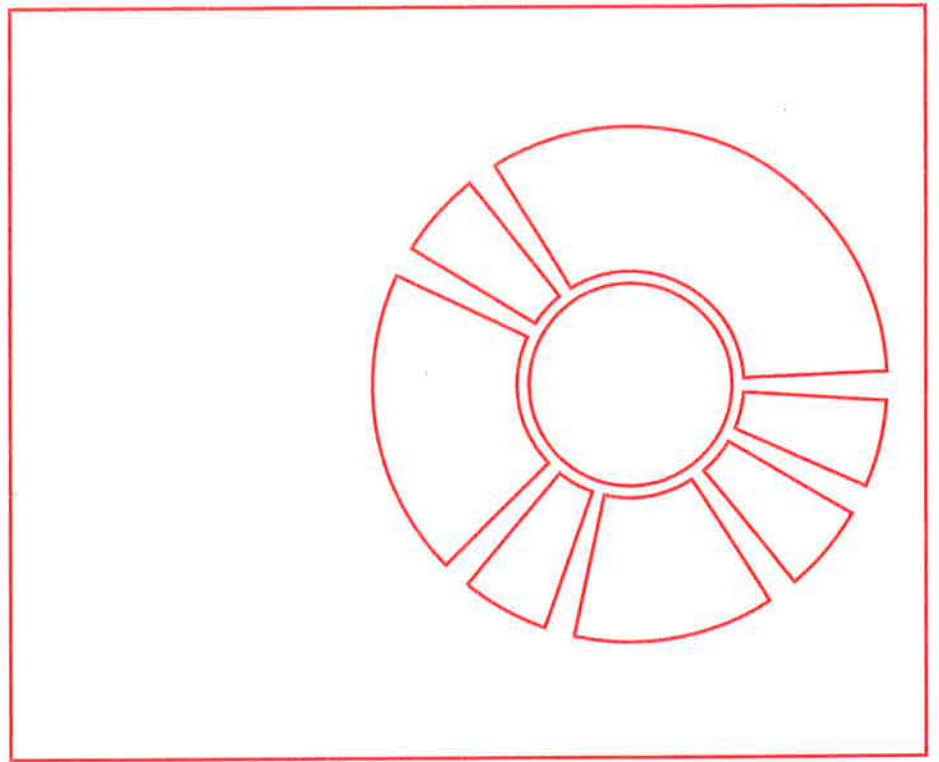


Philip W. Shaw, A.I.A

PWS/ayr



LETTER OF INTEREST	
GENERAL INFORMATION	1.0
◆ Company Profile	1.1
◆ Project Approach	1.2
◆ Areas of Expertise	1.3
◆ Digital Technology	1.4
PROFESSIONAL QUALIFICATIONS	2.0
◆ Summary of Qualifications	2.1
◆ Organizational Chart	2.2
KEY PERSONNEL	3.0
◆ Resumes: Shaw Design Group, P.A..	3.1 - 3.6
◆ Resumes: Brown, Mitchell & Alexander, Inc.	3.7 - 3.9
◆ Resumes: Simpkins & Costelli, Inc.	3.10 - 3.12
◆ Resumes: Consulting Engineer	3.13
PROJECT EXPERIENCE	4.0
◆ Related Projects: Shaw Design Group, P. A.	4.1 - 4.8
◆ Related Projects: The Power Source, LLC	4.9 - 4.13
APPENDIX	5.0
◆ Professional References	5.1
◆ Certificate of Good Standing	5.2
◆ National Board of Architecture Registration Board License	5.3



GENERAL INFORMATION

"I stepped off the train and found Gulfport

to be a veritable mud hole..." said Hobart Doane Shaw in 1904, about a town that would soon benefit from his own architectural and engineering skills and those of his son, grandson and great-granddaughter. In 1906, the firm founded by this Gulfport pioneer, designed one of the engineering marvels of the century, the Harrison County Seawall, a 26 mile reinforced concrete seawall separating Highway 90 from the unpredictable Gulf of Mexico. At the time of it's construction, it was the largest reinforced concrete structure in the world.

A trip through South Mississippi reveals hundreds of diverse projects designed by Shaw Design Group, P.A. since it's founding. The projects vary from major complexes such as the Army National Guard Training Site at Camp Shelby and Hardy Court Shopping Center, to major single structures such as the Sears Building (now 1st State Bank), Mississippi Power Company Service Center, Entex Building, Aviation Classification Repair Activity Depot (AVCRAD) Gulfport, Three Rivers Elementary School, Oakley Juvenile Correctional Facility, Chiquita Maintenance and Office Facility and the Entrance Complex at the Port of Gulfport along with hundreds of building varieties for the military, local government and private clients, including the Harrison County Board of Supervisors, and Harrison County and Gulfport School Districts.

With a staff including architects, interior designers & construction managers, Shaw Design Group, P.A. performs a broad range of professional services catering to the constructed environment in South Mississippi. Shaw Design Group, P.A. has a reputation for working on difficult, technically dense projects and bringing them to a successful, timely and budget-friendly conclusion. Our willingness to undertake projects of this nature has enabled us to maintain ongoing client relationships with all agencies for whom we have worked and has resulted in the assignment of some extremely unusual and challenging commissions for a diverse range of clients.



HISTORY

Shaw Design Group, P.A. was founded by Mr. H.D. Shaw, Sr. and Mr. Dean P. Woleben in 1906 under the name Shaw & Woleben Architects. Four generations and over 110 years of continuous practice make this the oldest of this type in Mississippi, as well as one of the oldest firms in the Southeastern United States. Since its inception, the firm has been

responsible for millions of dollars worth of construction throughout Mississippi and the Southeastern United States and has long maintained it's reputation for quality

METHODOLOGY

Projects at Shaw Design Group, P.A. are administered by a Principal-in-Charge of each commission. The Principal-in-Charge functions as the primary point of contact between the client and the design team of Shaw Design Group, P.A. and consultants. The Principal-in-Charge remains the same from the beginning of a project through completion of construction and has full authority to speak on behalf of the entire organization in a technical and managerial capacity. Personnel are assembled in a working organization with the firm based on their experience and skills.

The same group of people in the architect's office work on the project from the design phase through the completion of contract documents as needed. The team put together for a particular project varies in size according to the scope, schedule and complexity of the project and the particular skills required by the project. Therefore, the team can range from one person up to over a dozen people. The Principal-in-Charge of projects is responsible for coordination and scheduling of all information to and from clients and consultants. Along with the Project Architect, the Principal-in-Charge ensures accuracy of documents and drawings, as well as making sure proper procedures are taking place throughout the life of the projects, in order to guarantee quality control and conformance.

Major decisions about contract conformance are made by the Principals of the individual firms with consultation with the other firms that would be affected by the decisions. This process begins in the early design phase and continues through completion.

Safety is always an significant concern, not only about the safety of the final building, but of the process in which it is produced.

AREAS OF EXPERTISE

Shaw Design Group, P. A. and our consultants have a strong local presence in addition to extensive experience with the facilities and procedures of the Mississippi State Port Authority, with whom we have been providing services since 1980. Our project team possess a broad knowledge in design and construction administration of public works and general facilities projects. We specialize in a wide variety of consulting and design services including:

SHAW DESIGN GROUP, P. A.

- ◆ Architectural Design
- ◆ Schematic Design
- ◆ Space Planning & Programming
- ◆ Interior Design
- ◆ Construction Administration
- ◆ Construction Management
- ◆ Roofing Investigation
- ◆ Asbestos Investigation
- ◆ Cost Estimating
- ◆ Bidding & Negotiation

BROWN, MITCHELL & ALEXANDER, INC.

- ◆ Civil & Site Design
- ◆ Roadway & Parking Design
- ◆ Permitting
- ◆ Construction Management
- ◆ Surveying

SIMPKINS & COSTELLI, INC.

- ◆ Marine Structural Design
- ◆ Building Structures
- ◆ Construction Management

THE POWER SOURCE, LLC

- ◆ Electrical Design

MYRON JAMES & ASSOCIATES, P.A.

- ◆ Plumbing Design
- ◆ Mechanical Design
- ◆ Fire Protection Design

DAVID MUSACCHIO

- ◆ Criminal Justice Facility Planning

TECHNICAL RESOURCES

In our fast-paced digital age, we understand the importance of maintaining a state-of-the art design and consulting firm. Shaw Design Group, P.A. and their consultants utilize the most current resources and equipment for drawing production and communication with clients and members of the project team. Our daily office procedures are employed using:

- Windows 10 Operating System
- Large Capacity File Server
- File Sharing Exchange
- Large Format Copier, Printers & Plotter
- 3-D Digital Rendering Technology
- Digital Photography
- Laser Technology

DIGITAL PRODUCTION

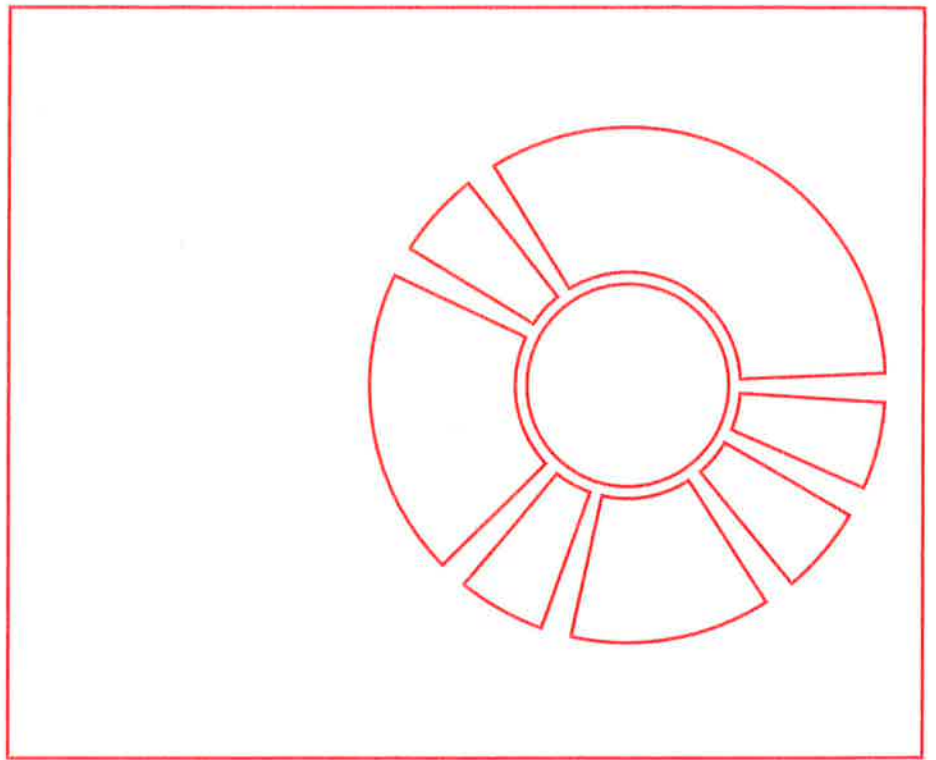
The foundation of Shaw Design Group, P.A. is its integrated computer system. Each employee has a networked personal computer configured to the specific tasks that employee performs. Individual computers are networked through our file server. All files are backed-up to tape daily. Back-up tapes are stored off-site.

Currently drawings are performed using AutoCAD Architectural Desktop. In addition, we have the capability of producing details 3-D renderings using Google SketchUp and 3D Studio Viz. The majority of our administrative forms, documents, spreadsheets and presentations are completed using current Microsoft Office programs

Our drawings are copyrighted. We customarily furnish drawings to clients who so desire at project completion in electronic format with a release to use the information for purpose of maintaining, modifying and adding to the building.

Since 1995, Shaw Design Group, P.A., has utilized the internet for vital communications. We have a long and successful history of electronic transmission of drawings, correspondence and other information.

In 1995 in association with Hayes, Seay, Mattern & Mattern of Roanoke, VA we completed a \$10 million dollar Juvenile Correctional Facility in Bon Aire, VA. Even though different engineering disciplines were located in four separate cities by use of e-mail drawing exchange, we were able to complete and coordinate



PROFESSIONAL QUALIFICATIONS

KEY QUALIFICATIONS

We are confident our team of professional experts will provide Harrison County with the architectural and engineering services required to execute and deliver an economical, sustainable, attractive and functional juvenile detention facility. The following is a summary of our team's key qualifications:

- ◆ Team members represent a strong local and state presence, comprising of some of the most top quality architectural and engineering companies.
- ◆ All firms are licensed to practice architecture and engineering in the State of Mississippi.
- ◆ Each team member possesses a vast understanding and knowledge in the design and procedures of local, state and federally funded projects.
- ◆ Consulting firms have an excellent working relationship with local and state officials and agencies, including MDEQ, MDOT, Harrison County and the City of Gulfport.
- ◆ Due to our long-standing, established local presence, members of the project team are acutely familiar with local contractors and material suppliers and their capabilities and limitations.
- ◆ Each firm has an expert capacity to perform in concert with team members that include: architectural, civil, structural, electrical, mechanical and plumbing engineers, in addition to environmental, land and hydrographic survey personnel.
- ◆ Consulting firms have worked together on a variety of projects in the past and have maintained excellent working relationships among team members.
- ◆ Each firm has extensive expertise in project management for CDBG & FEMA funded projects, public works, structural and general facilities projects.
- ◆ Our design team is willing to work jointly with another firm or firms selected by the owner if special expertise is required for specific tasks.

HARRISON COUNTY BOARD OF SUPERVISORS

SHAW DESIGN GROUP, P. A.

Philip Shaw, Architect
Principal-in-Charge

Mary Paxton Sewall, AIA
Architect / Interior Designer

Allison Rouse
Project Architect

Toni Gautier
CAD Designer

Michael Rouse
Construction Manager

Yvette Rhodes
Administration

**BROWN, MITCHELL &
ALEXANDER, INC.**

Ben Smith, PE
Project Engineer IV

Mark Otto, PS
Survey Manager

Nick Gant, PE
Project Manager

SIMPKINS & COSTELLI, INC.

Michael Costelli, PE
Senior Project Engineer

Madeline Costello, PE
Project Engineer

David LeBlanc, PE
Project Engineer

THE POWER SOURCE, LLC

Andy Covington, PE
Electrical Engineer

Charles Ingram, PE
Electrical Engineer

Chris Green, PE
Electrical Engineer

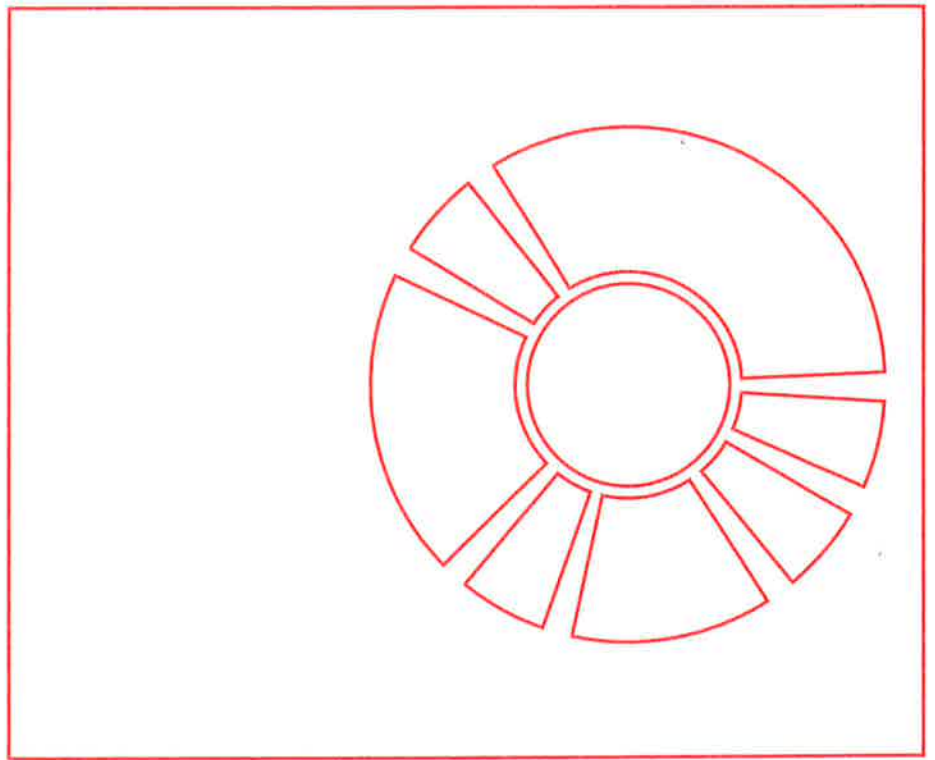
**MYRON JAMES &
ASSOCIATES, P. A.**

Myron James, PE
Mechanical Engineer

Michelle James, EIT
Mechanical Engineer

Travis James
Construction Administrator

ORGANIZATIONAL CHART



KEY PERSONNEL

PHILIP W. SHAW

Principal-in-Charge

YEARS EXPERIENCE

49 years

PROFESSIONAL REGISTRATIONS

- ◆ MS 1975
- ◆ LA 1978

SPECIAL SKILLS

- ◆ Asbestos Management Planning
- ◆ Roof Inspection
- ◆ Forensic Architecture

PROFESSIONAL AFFILIATIONS

- ◆ American Institute of Architects
- ◆ Construction Specification Institute
- ◆ Society of American Military Engineers

CIVIC AFFILIATIONS

- ◆ Gulfport Rotary Club, Bd. of Directors
- ◆ Gulfport Chamber of Commerce
- ◆ Mississippi Coast Watchers
- ◆ Antique Auto & Engine Club of MS
- ◆ Westminster Pres. Church, Elder

EDUCATION

1970 Georgia Institute of Technology
Bachelor of Architecture

1971-73 Mississippi State University
Post Graduate Studies, Civil Engineering

PROFESSIONAL EXPERIENCE

Mr. Shaw has extensive experience in design, project management, contract document preparation and construction administration for projects ranging in sizes from very small to in excess of 15 million dollars. During the 47 years that he has directed Shaw Design Group, office planning and structures has been a major portion of the practice. Mr. Shaw has completed nearly 5,000,000 square feet of office area in over 100 projects in either new or renovated spaces.

After graduating from Georgia Tech in 1970, Mr. Shaw worked for architectural firms in Columbus, Mississippi and Brunswick Georgia. In 1974 Mr. Shaw began work as university architect for the University of Southern Mississippi. Leaving that position in 1977, Mr. Shaw took over the practice of Shaw and Associates following his father's death and has continued to direct the firm since that time. During his status as principal architect, Mr. Shaw has been project architect for a wide range of projects, and project types and has worked with an array of clients on the Coast and statewide, including the State of Mississippi, City of Gulfport, U.S. Navy, U.S. Air Force, Mississippi Military Department, Hancock Bank, Mississippi Power Company, Entex, Harrison County School District, The Port of Gulfport and several other government agencies and numerous private clients. Mr. Shaw is also a Certified Asbestos Inspector and Management/Planner.

RELEVANT PROJECT EXPERIENCE

- ◆ Oakley Training School - Raymond, MS
- ◆ MSPA: DuPont Ilmenite Facility Operations Building
- ◆ Bon-Aire Juvenile Correction Ctr. - Chesterfield Cty, VA
- ◆ Camp Shelby Base Headquarters
- ◆ Harrison County School District: Katrina Recovery
- ◆ Stewart, Sneed, Hewes Offices - Gulfport, MS
- ◆ VA Office Building - Jackson, MS
- ◆ MS Dept. of Employment Security - Gulfport, MS
- ◆ MS Dept. of Health Building - Jackson, MS
- ◆ Security Police Headquarters - Keesler AFB, MS



SHAW DESIGN GROUP, P. A.

ARCHITECTURE + INTERIOR DESIGN

CONSULTANTS FOR THE CONSTRUCTED ENVIRONMENT

MARY PAXTON-SEWALL

Architect
Interior Designer

YEARS EXPERIENCE

42 years

PROFESSIONAL REGISTRATIONS

- ◆ MS 2000
- ◆ LA 1988

SPECIAL SKILLS

- ◆ Space Planning
- ◆ Interior Design

PROFESSIONAL AFFILIATIONS

- ◆ American institute of Architects

CIVIC AFFILIATIONS

- ◆ Ocean Springs Main Street

EDUCATION

1974 University of Cincinnati
Bachelor of Design

PROFESSIONAL EXPERIENCE

Ms. Paxton joined Shaw Design Group, P.A. thirty-three years ago after working for nine years for architectural firms in New Orleans, LA. Prior to that she worked one year, full-time as a co-op student for architectural/design firms the Knoxville, TN and Los Angeles, CA.

The opportunity to work with a variety of governmental clients is one of the more rewarding aspects of working for Shaw Design Group, P.A. During her employment with the firm, Ms. Paxton has provided space design services for such governmental clients as the Mississippi State port Authority, U.S. Navy, Army National Guard, Air National Guard, U.S. Air Force, U.S. Postal Service, State of Mississippi, Region VIII Housing Authority and Harrison County School District.

Ms. Paxton has found working with these agencies, each with their own unique regulations and criteria, a challenge that is accepted with eagerness and enthusiasm each and every time. Providing creative, thoughtful solutions to problems while working within distinct and sometimes strict guidelines is just one of the many goals set for each project. In addition, Ms. Paxton strongly believes, as do the others in the firm, that one key to a successful project is to achieve and maintain, effective communication among all members of the professional team, as well as with the client and the contractor. This is another important goal set for each project.

RELEVANT PROJECT EXPERIENCE

- ◆ WIN Job Center - Picayune, MS
- ◆ Stewart, Sneed, Hewes Offices - Gulfport, MS
- ◆ Belk-Roberts Office Complex - Gulfport, MS
- ◆ VA Office Build-out - Jackson, MS
- ◆ MS Dept. of Employment Security - Gulfport, MS



SHAW DESIGN GROUP, P. A.

ARCHITECTURE + INTERIOR DESIGN

CONSULTANTS FOR THE CONSTRUCTED ENVIRONMENT

M. ALLISON ROUSE, AIA

Project Architect

YEARS EXPERIENCE

13 years

PROFESSIONAL REGISTRATIONS

- ◆ NC 2016 #13422

SPECIAL SKILLS

- ◆ 3D Modeling

PROFESSIONAL AFFILIATIONS

- ◆ American institute of Architects

EDUCATION

2004

Louisiana State University

Bachelor of Architecture

PROFESSIONAL EXPERIENCE

In partnership with her father, Mrs. Rouse expanded their family's century long legacy with the opening of their Asheville area architecture firm in February 2017. Prior to this joint venture, she worked remotely for her father at his firm for over 3 years. Mrs. Rouse is a fourth generation architect and great-granddaughter of the firm's founder.

Following Hurricane Katrina, she relocated from Gulfport, MS to Asheville, NC in 2006 and worked as an intern architect and project manager for a mid-sized architecture firm for five years, where she had the opportunity to work with a variety of state, local and non-profit clients. During her employment, she specialized in educational and institutional projects, and was an instrumental member of the design team for a new 92,000 SF, 14 million dollar elementary school, as well as a 7,000 SF, 2 million dollar adult day care facility.

During her combined five years of employment at Shaw Design Group, Mrs. Rouse has continued to enjoy the opportunity to work on a variety of public and private projects and has provided architectural services for state and local clientele including the Mississippi State Port Authority, the Harrison County School District, the Macon County School District, and the Army National Guard.

Subsequent to Hurricane Katrina, one of Mrs. Rouse's key accomplishments was aiding in the facilitation of recovery for the Harrison County School District, where she participated in a variety of tasks, which included full damage investigations, and assessments of each property in the school district.

Upon her return to Shaw Design Group in 2014, she began working on the construction documents for the DuPont Ilmenite Facility that is currently under construction at the Port of Gulfport, a 50,000 sf industrial warehouse, which includes retail showroom space and a memorial plaza for the NCBC SeaBee Base in Gulfport, MS. Her most recent projects include two high-end residential projects.

RELEVANT PROJECT EXPERIENCE

- ◆ WIN Job Center - Pascagoula, MS
- ◆ Adult Detention Center - Harrison County, MS
- ◆ Renovate Class IX Warehouses - Camp Shelby, MS
- ◆ MSPA: DuPont Ilmenite Facility - Gulfport, MS



SHAW DESIGN GROUP, P. A.
ARCHITECTURE + INTERIOR DESIGN

CONSULTANTS FOR THE CONSTRUCTED ENVIRONMENT

MICHAEL ROUSE

Construction Manager

YEARS EXPERIENCE

14 years

NOTABLE ACCOMPLISHMENTS

Veteran of United State Armed Services

SPECIAL SKILLS

- ◆ Estimating
- ◆ Project Management

EDUCATION

2003

Louisiana State University

Bachelor of Science, Construction Management

PROFESSIONAL EXPERIENCE

Employed as a construction management consultant for Shaw Design Group, Mr. Rouse has maintained an active role since 2005 when he began preparing damage estimates for clients following Hurricane Katrina. His responsibilities quickly evolved into performing additional construction services, including the renovation of U.S. Congressman, Gene Taylor's, district office located, at the time, in downtown Gulfport.

Prior to Hurricane Katrina, Mr. Rouse, was employed with W.C. Fore Trucking, Inc. where he was involved in a variety of marine construction projects including an expansion project at the Port of Gulfport and the Biloxi Schooner Pier.

Mr. Rouse has over 12 years experience in site and road construction where he has performed project management and estimating services for several civil, utilities and asphalt contractors in the South MS and Western NC area.

RELEVANT PROJECTS

- MSPA: Port Expansion Project
- Biloxi Schooner Pier
- Renovation to Gene Taylor Office



SHAW DESIGN GROUP, P. A.

ARCHITECTURE + INTERIOR DESIGN

CONSULTANTS FOR THE CONSTRUCTED ENVIRONMENT

TONI GAUTIER

CAD Technician

SPECIAL SKILLS

- ◆ AutoCAD
- ◆ Microsoft Power Point
- ◆ Microsoft Office
- ◆ Microsoft Project

PROFESSIONAL EXPERIENCE

Since her employment with Shaw Design Group, P.A., Ms. Gautier has assisted with projects for the Office Warehouse Seaway Industrial Park, Gulfport, MS, two high-end residential projects, and New Life Baptist Church.

Ms. Gautier has also recently completed projects for local government entities, and is currently working on restoration and renovation projects.

From her previous employment, Ms. Gautier brings her experience in historic restoration, interior design, space planning and residential design.



SHAW DESIGN GROUP, P. A.

ARCHITECTURE + INTERIOR DESIGN

CONSULTANTS FOR THE CONSTRUCTED ENVIRONMENT

YVETTE RHODES

Administration

YEARS EXPERIENCE

23 years

SPECIAL SKILLS

- ◆ Microsoft Excel
- ◆ Microsoft Publisher
- ◆ Microsoft Power Point
- ◆ Microsoft Office

PROFESSIONAL EXPERIENCE

Ms. Rhodes has been employed with Shaw Design Group, P.A. for 23 years and has been involved in numerous projects during that time. Her responsibilities include coordination and production of correspondence, specification preparation, proposals and submittals as well as a variety of office administration tasks. She is in charge of distribution and collection of construction document during bidding and construction phases of the projects.



SHAW DESIGN GROUP, P. A.

ARCHITECTURE + INTERIOR DESIGN

CONSULTANTS FOR THE CONSTRUCTED ENVIRONMENT

BENJAMIN SMITH, P.E.

Vice President / Project Engineer IV

YEARS EXPERIENCE

15 years

PROFESSIONAL REGISTRATIONS

- ◆ MS #18333

PROFESSIONAL AFFILIATIONS

- ◆ American Council of Engineering Cos.

EDUCATION

- 2002** **Mississippi State University**
Bachelor of Science, Civil Engineering
- 2004** **Mississippi State University**
Masters of Science, Civil Engineering

PROFESSIONAL EXPERIENCE

Mr. Smith is an experienced Project Engineer with several years experience in road improvements, traffic analysis, private site plan design, drainage and stormwater detention design, utility design, municipal drainage projects, drainage studies, and water / sewer system analysis.

Notable projects with BMA consists of St. Patrick High School (including the Access Roads, Pump Station, Force Main & Water Well), Mississippi Power Operations Center, Flat Branch Gravity Sewer Interceptor and numerous drainage improvements projects for the City of Gulfport. He has been involved in the planning, engineering and permitting stages of numerous private development projects including residential and commercial subdivisions and retail developments.

Prior to his employment with BMA, Mr. Smith was a graduate research assistant at Mississippi State University where he conducted research funded by the Mississippi Department of Transportation (MDOT). The research was focused on evaluating the in-place service of asphalt mixes using accelerated testing procedures. Research results are being used by MDOT to develop new specifications that will enhance performance and reduce overall cost of asphalt pavements throughout the state. Mr. Smith has also made a presentation on "RESPONSIBLE SITE DESIGN: Implementing Innovative Post-Construction Storm-water Management Strategies, A Case Study" for the Grand Bay National Estuarine Research Reserve.

RELEVANT PROJECT EXPERIENCE

- ◆ MGM Park (Civil) - City of Biloxi
- ◆ Golden Nugget Casino Expansion - Biloxi, MS
- ◆ Silver Slipper Casino & Resort
- ◆ Operations Center - MS Power Company)
- ◆ St. Patrick High School - Biloxi, MS
- ◆ Downtown Gulfport Streetscape Improvements
- ◆ New Ocean Springs High School
- ◆ Pascagoula Promenade & Beachfront Walkway
- ◆ Creosote at Taylor Drainage Improvements
- ◆ Florence Gardens Subdivision
- ◆ Flat Branch Gravity Sewer Interceptor



NICK GANT, P.E.

Project Engineer

PROFESSIONAL REGISTRATIONS

- ◆ MS #26307
- ◆ AL #34830

EDUCATION

2009 University of Alabama
Bachelor of Science, Civil Engineering

PROFESSIONAL EXPERIENCE

Mr. Gant is a Project Engineer with several years' experience with water, sewer and roadway infrastructure repairs, as well as site planning for large scale residential, commercial and recreational projects. He joined the BMA team in 2017 and is licensed in both Mississippi and Alabama.

RELEVANT PROJECT EXPERIENCE

- ◆ SRF Troy Sewer Improvements (Troy, Al)
- ◆ Dongwon Autopart Expansion 2013 (Luverne, Al)
- ◆ Foley Square, Phases I, II, and III (Foley, Al)
- ◆ Newk's Airport Boulevard (Mobile, Al)
- ◆ Eastside High School (Montgomery, Al)
- ◆ Oxford Recreational Facility (Oxford, Al)
- ◆ New Park Apartments, Phase II (Prattville, Al)
- ◆ Woodland Creek, Phase 6 (Pike Road, Al)
- ◆ Ann Street, Street & Drainage Rehabilitation (Mobile, Al)
- ◆ Roadway Inspection & Resurfacing (Spanish Fort, Al)
- ◆ College Park Elementary School Sidewalk SRTS
- ◆ Baldwin County FEMA Road Repairs
- ◆ Spanish Fort Bluff Repairs (Spanish Fort, Al)
- ◆ Gautier Drainage Clearing (Gautier, Ms)
- ◆ Belforest Water Line Relocation (Belforest, Al)
- ◆ Gautier Transmission Mains (Gautier, Ms)
- ◆ Mobile Co. New Sewer Collection System
- ◆ MAWSS Water and Sewer Improvements (Mobile, Al)



MARK OTTO, P.S.

Survey Manager

YEARS EXPERIENCE

24 years

PROFESSIONAL REGISTRATIONS

- ◆ MS #2868

PROFESSIONAL AFFILIATIONS

- ◆ MS Assoc. of Professional Surveyors

EDUCATION

1993

University of South Alabama

Bachelor of Science, Geography

PROFESSIONAL EXPERIENCE

Mr. Otto is a Professional Land Surveyor with experience in land and marine surveying. He has performed a wide variety of surveys including boundary and topographic surveys, construction layout, flood insurance elevations, tree surveys, and hydrographic surveys. He is also familiar with title and deed information as well as the preparation of easements.

With BMA, Mr. Otto offers extensive coordination capabilities to the engineering staff for the interpretation of survey data as it relates to the construction of projects. He also has extensive experience in the use of the AutoCAD software program.

As the Survey Manager, Mr. Otto coordinates the survey crews and associated surveying tasks for design projects. He is very knowledgeable of the three coastal counties and land development procedures relative to surveying.

RELEVANT PROJECT EXPERIENCE

- ◆ City of Biloxi Benchmarks – City of Biloxi
- ◆ Mississippi Phosphates - Pascagoula, MS
- ◆ Biloxi Recreational Complex – City of Biloxi
- ◆ 1st & Pine Streets Drainage – City of Biloxi
- ◆ Golden Nugget Casino – Biloxi, MS
- ◆ Bay St. Louis / U.S. Highway 90 Bridge Repairs
- ◆ Pass Road Signalization – City of Biloxi
- ◆ Airport Perimeter Road – Topographic Survey
- ◆ Construction of Pier 7– Pre and Post-Dredge Surveys
- ◆ Harrison County Sand Beach Renourishment Project

MICHAEL R. COSTELLI, P.E.

Project Manager

YEARS EXPERIENCE

45 years

PROFESSIONAL REGISTRATIONS

- ◆ MS #6653
- ◆ LA #13535

PROFESSIONAL AFFILIATIONS

- ◆ American Society of Engineers
- ◆ American Council of Engineering Cos.
- ◆ Engineers Without Borders

CIVIC AFFILIATIONS

- ◆ Bible Students Retirement Center
Board Member, Portland OR
- ◆ Cypress Place Homeowner's Assoc.



EDUCATION

1970

West Virginia Institute of Technology

Bachelor of Science: Civil Engineering

PROFESSIONAL EXPERIENCE

Mr. Costelli Became President/CFO and Sole Owner of Simpkins & Costelli, Inc. on May 1, 1998. Became Vice-President of firm in May 1981. A partner in the firm of Simpkins Engineering Consultants, March 1980. Since then, Mr. Costelli has participated in many civil and structural projects including warehouses, port wharves and municipal marina bulkheads, water and wastewater treatment plants, buildings that include schools, hospitals, convention and visitor centers, military housing and administrative facilities, churches, higher education and research facilities, harbormaster facilities, automobile dealerships, and various site work projects for these buildings and other facilities.

One year as Civil/Structural Engineer with Pan American World Airways, Inc., providing facility engineering services at John C. Stennis Space Center in Hancock County, Mississippi. Projects included civil and structural engineering for new building construction, drainage and paving projects, rehabilitation of civil engineering facilities and renovation of existing buildings.

Three and one-half years as Chief Engineer for civil consulting engineering firm. Projects included civil engineering and planning for commercial buildings, waterfront harbor facilities, utility systems, commercial and industrial site development, drainage and paving projects. Also rendered engineering assistance to associated general contracting company in preparation of construction bids, field surveying and project coordination.

Three years as structural design engineer and manager of drafting department for major East Coast precast, prestressed concrete manufacturer. Projects included commercial and industrial buildings and parking garages.

Two years as Design Engineer for Union Carbide Corporation in Charleston, West Virginia. Projects included structural design of chemical plant superstructures and foundations.

DAVID P. LEBLANC, P.E.

Construction Engineer

YEARS EXPERIENCE

32 years

PROFESSIONAL REGISTRATIONS

- ◆ MS #10745
- ◆ LA #26731

PROFESSIONAL AFFILIATIONS

- ◆ American Society of Engineers
- ◆ National Civil Engineering Honor Society (Chi Epsilon)

EDUCATION

1984

Louisiana State University

Bachelor of Science, Civil Engineering

PROFESSIONAL EXPERIENCE

Mr. LeBlanc has over 25 years experience in the field of civil and structural engineering including design and support services on assigned work. He has performed engineering design and specification writing, equipment selection, drafting, material takeoff, cost estimating, submittal reviews, payment requests, change orders, construction inspection, field engineering, field investigations, equipment start-up and testing, I & I field work, flow data analysis and Contractor schedule reviews. Mr. LeBlanc also has over 10 years experience in wastewater design and construction administration and served as resident project engineer for the West Biloxi Wastewater Treatment Facility Upgrade from 1989-1991.



MADELINE COSTELLI, E.I.

Project Engineer

PROFESSIONAL REGISTRATIONS

- ◆ MS # EI-25778

PROFESSIONAL AFFILIATIONS

- ◆ American Society of Civil Engineers
- ◆ American Council of Engineering Cos.
- ◆ Engineers Without Borders
- ◆ Gulf Coast Young Professionals



EDUCATION

2014

University of Mississippi

Bachelor of Science, Civil Engineering

PROFESSIONAL EXPERIENCE

Ms. Costelli Became a Structural Engineer at Simpkins & Costelli, Inc. on June 1, 2016. Since then, Ms. Costelli has participated in many structural projects including buildings that include dorm assessment, sports complexes, churches, existing building structural assessments, and higher education and research facilities.

Two years as a Project Engineer at Lanier & Associates Consulting Engineers, Inc. in New Orleans, LA developing conceptual designs, detailed designs, and technical specifications for various types of projects related to the dry and liquid bulk handling industry including ship/barge/rail loading and unloading systems.

Projects included monopiles, ship/barge docks, hose towers, pipe racks, approachways, walkways, mooring and breasting analyses, ship/barge mooring and breasting dolphins, heavy haul road inspections, capacity studies of existing dock systems, slope stability monitoring and improvements, building foundations, flare and propane tank foundations, and project management.

Summer Intern at Neel-Schaffer, Inc. in Jackson, MS in 2013. Projects included checking quantities for the Old Taylor Road bridge expansion in Oxford, MS and designing the new MDOT Box Culvert Standards.

Spring of 2013 semester worked as a Research Assistant under Dr. Waheed Uddin in the Center for Advanced Infrastructure Technology (CAIT) at the University of Mississippi School of Engineering. Tasks included utilizing Microsoft PowerPoint and Excel to create tables and charts displaying research on multimodal projects.

Summer Intern at Mississippi Department of Transportation, Gulfport, MS project office in 2012. Inspected bridge construction for the Sanghani Boulevard project in D'iberville, MS. Construction efforts included completion of connector roads (dirt work, asphalt, box culverts, curbs, and striping), redirected all traffic to temporary roads and signals, and test piles including seismic testing for the overpass bridge.

DAVID E. MUSACCHIO

Criminal Justice Facility Planning
Consultant - Security Systems,
Equipment, Staffing & Operations

EDUCATION

- 1962** **University of Louisville**
Bachelor of Arts, Psychology
- 1967** **University of Louisville**
Masters of Science, Social Work

PROFESSIONAL EXPERIENCE

As a professional Social Worker, educated in research and demography, Mr. Musacchio has practiced in the field of Adult and Juvenile Corrections and Criminal Justice for more than 54 years (1964-2017). He has participated in more than two hundred (200) correctional and justice planning and construction projects.

He has served, as Director of Corrections for Jefferson County in Louisville, Kentucky's largest city. In this position he was responsible for all institutional and community-based programs for both adult and juveniles. As Director of Corrections he worked extensively with the Courts and many local citizens groups. During his tenure in Jefferson County a new Hall of Justice, housing both courts and jail facilities, was designed and construction begun.

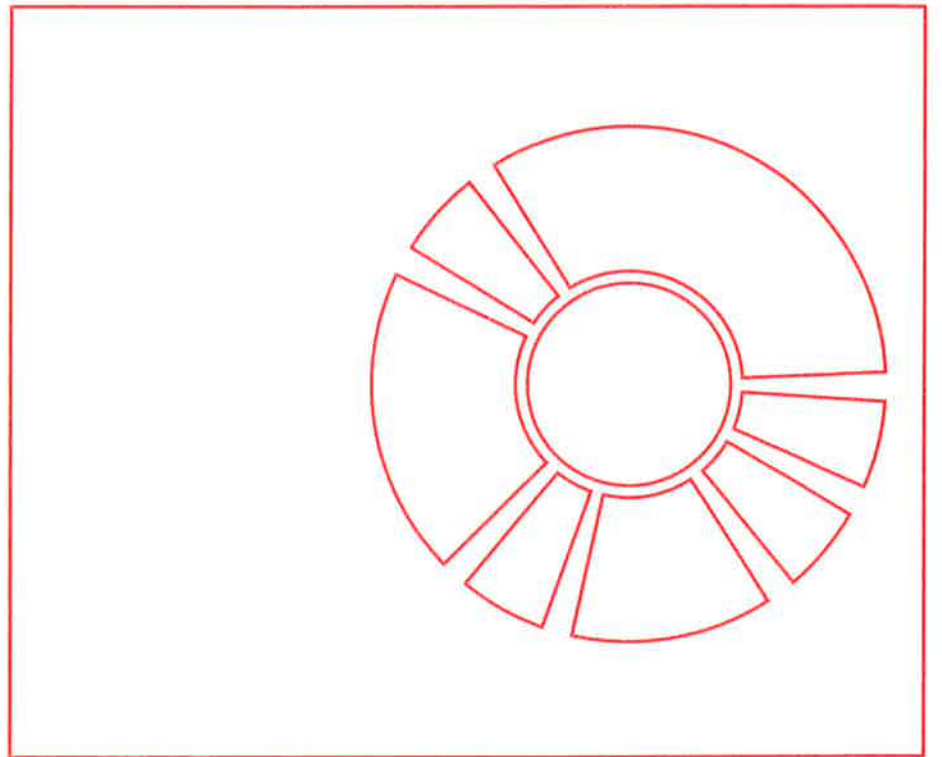
His experience in the Field of Corrections began with the position of Staff Social Worker at a 2,000 bed Medium Security Long-Term Convicted Offender Confinement Facility. Upon completion of graduate education, (MSSW/1967 with field experience at the Federal Bureau of Prisons) he was given responsibility for the inspection and oversight of a \$15 million renovation and construction project.

Subsequent positions of Director of Reception and Orientation Unit and Deputy Warden for Treatment were held at that facility. In the Deputy Warden position he had single administrative responsibility for all inmate treatment and support services.

With the establishment of the Kentucky Crime Commission, the Federal Law Enforcement Assistance Administration State Planning Agency, Mr. Musacchio was transferred there and was responsible for all Correctional and State Police programs, planning and funding. The most notable projects created and funded during his tenure were education and training of line staff, creation of college-level courses in Law Enforcement and Corrections at Eastern Kentucky University, a new State Police Forensics Laboratory (equipped and staffed), Organized Crime Intelligence and Special Enforcement Units were established. A major revamping and equipping of the State Correctional Industry Program was also accomplished. While at the Crime Commission, Mr. Musacchio was teamed with LEAA Corrections Specialist Robert D. Barnes in providing Program and Architectural Technical Assistance to state and local units of government at numerous locations throughout the U.S.

At the recommendation of the Regional Director of the Federal Bureau of Prisons he was appointed to Director of Corrections positions in both New Orleans and Jefferson Parishes, Louisiana. In both offices, under the supervision of the Federal District Court, he reported jointly to the Parish Council and Sheriff, and in both instances was a Commissioned Law Enforcement Officer. While at both Orleans and Jefferson Parish he had the responsibility for overseeing the design and construction of new jail facilities.

From 1975 until the present Mr. Musacchio has been a private practicing consultant in the field of Corrections and Criminal Justice with emphasis on institutional staffing, operations and facility design. During this period he has developed a comprehensive knowledge of institutional hardware and electronic control and monitoring equipment. In addition he has unique abilities to form and work with planning and design teams composed of agency staff, policy makers, architects and engineers.



PROJECT EXPERIENCE

RELATED PROJECTS

OAKLEY TRAINING SCHOOL

completed in 2000

Raymond Mississippi

Project Size

88,000 sq. ft.

Construction Value

withheld at Owner request



PROJECT DESCRIPTION

Oakley Training School is the first facility of its kind in the state. Besides housing 265 male and female students in conditions ranging from medium to maximum security, the 88,000 sf facility includes: gymnasium, 15 classroom educational wing, cafeteria, administration area and activity areas.



SHAW DESIGN GROUP, P. A.

RELATED PROJECTS

RENOVATE ADULT DETENTION FACILITY FOR HARRISON COUNTY

completed in 2007

Gulfport, Mississippi

George Payne, Sheriff

Harrison County Board of Supervisors

Phone: (228) 865-7092

Construction Value

\$3.5 Million



PROJECT DESCRIPTION

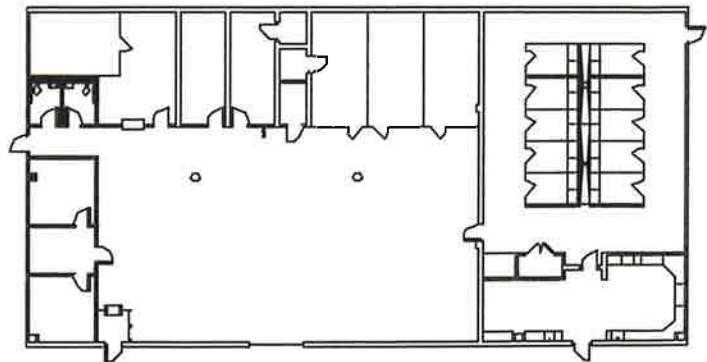
Architectural Services on this project began with a planning study to identify work items necessary to accomplish the following goals:

- ◆ Significantly reduce the number of prisoner escapes.
- ◆ Improve inmate and staff security and safety.
- ◆ Achieve accreditation by the American Corrections Association.

The study revealed four distinct items of work that were completed as separate contracts. These contracts upgraded the perimeter security with a new fence and relocated certain facilities, new door locks and controls, new fire alarm system, and a new support service building.

SCOPE OF SERVICES

- ◆ Programming
- ◆ Architectural Design
- ◆ Space Planning
- ◆ Interior Design
- ◆ Contract Administration



SHAW DESIGN GROUP, P. A.

RELATED PROJECTS

ADMINISTRATIVE OFFICES AND ALTERNATIVE SCHOOL FOR HARRISON COUNTY SCHOOLS

completed in 1999

Gulfport, Mississippi

Mr. Henry Arledge

Harrison County School District

Phone: (228) 539-6500

Construction Value

\$1.5 Million

PROJECT DESCRIPTION

The facility contains the District-wide computer hub and facilities for maintaining 40 file servers and over 200 individual PC's. All computers in the School District tie into and are operated from this central computer room, a concept we first worked with in the early 1980's with several private clients. The computer room also serves to tie together all educational computer systems in the coast counties through based line to the State Education Department. All file sever and communication rooms are fire protected with gaseous extinguisher systems.

BON-AIRE JUVENILE CORRECTION FACILITY

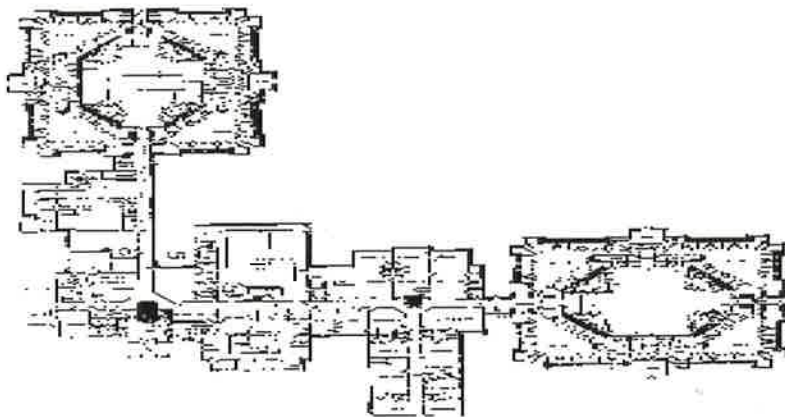
completed in 1999

Chesterfield County, Virginia

**Virginia Dept. of Youth
and Family Services**

Construction Value

\$20 Million



PROJECT DESCRIPTION

The Bon Aire facility was a 9.5 million dollar residential facility complete in association with Hayes, Seay, Mattern & Mattern, Inc., in 1995. The project contract documents were completed in 73 days from receipt of contract. Due to the extremely constricted schedule the documents were completed at Gulfport and three separate regional offices of Hayes, Seay, Mattern and Mattern, Inc. requiring an extraordinary coordination and management effort.

SHAW DESIGN GROUP, P. A.

RELATED PROJECTS

JUVENILE DETENTION CENTER FOR HARRISON COUNTY

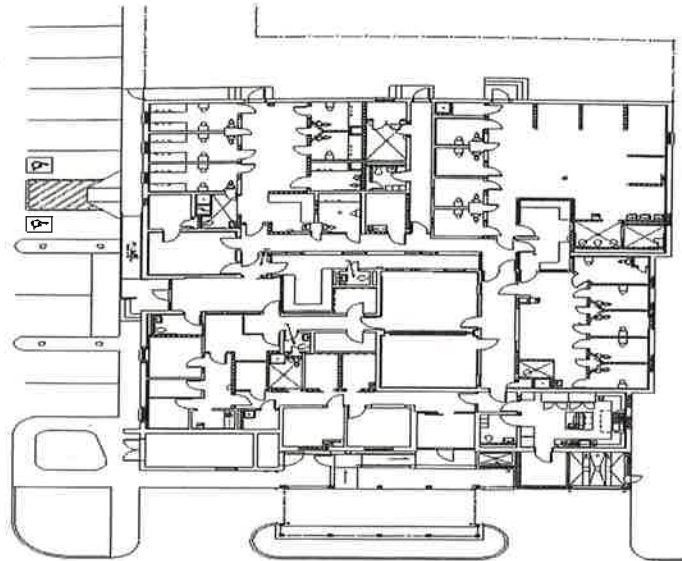
completed in 2001

Biloxi, Mississippi

Larry Benefield

Harrison County Board of Supervisors
Phone: (228) 865-4100

Construction Value
\$1.4 Million



PROJECT DESCRIPTION

This 10,000 sf facility is a renovation of an existing adult detention facility to accommodate 48 male and female juveniles. The facility has housing, food service, classrooms, activity and administration spaces. The development of this design removed the juvenile facilities in Harrison County from a Justice Department lawsuit.

SECURITY POLICE OPERATION CENTER

completed in 1992

Keesler AFB, Mississippi

Construction Value
\$1.8 Million



PROJECT DESCRIPTION

This project is the security police headquarters for Keesler AFB. The 2,350 sq. meter facility contains a administration space, holding areas, arms vaults, training rooms, locker rooms, and radio control and dispatch centers and support spaces.

SHAW DESIGN GROUP, P. A.

RELATED PROJECTS

CHIQUITA INTERIM MAINTENANCE & OFFICE FACILITY

completed in 2012

Gulfport, Mississippi

Mr. John Webb

Director of Engineering

Mississippi State Port Authority

Phone: (228) 865-4300

Construction Value

\$4.0 Million

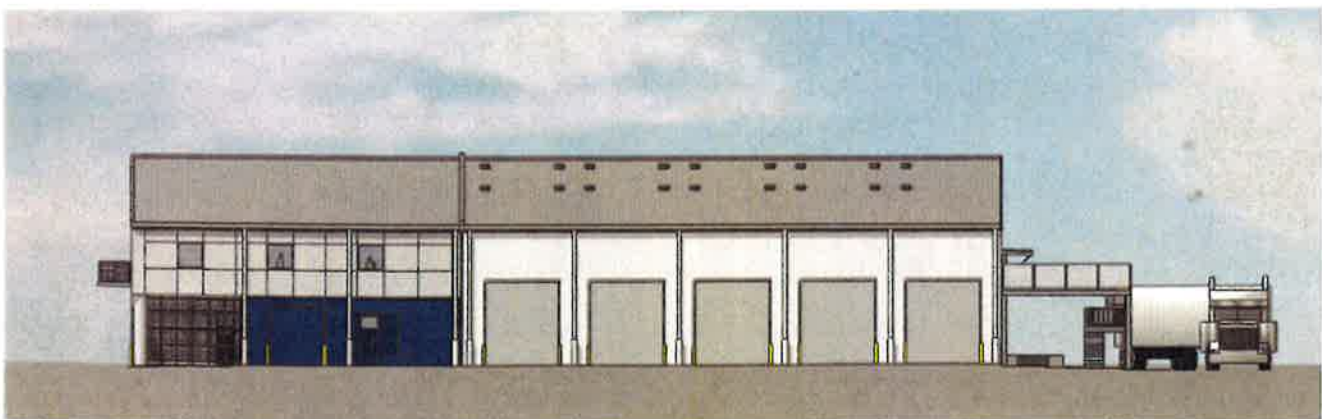


SOUTH ELEVATION

PROJECT DESCRIPTION

Shaw Design Group, P.A. was commissioned by the Mississippi State Port Authority provided professional architectural services including design, construction documents, contract negotiations and construction administration, for a 32,000 s.f. office and maintenance facility.

The project consists of a 23,400 s.f., one-story shop building with an attached two story reinforced concrete structure and deck with a steel structure above for a 8,600 s.f. office area. The building includes a handicapped accessible elevator and two remotely reinforced concrete fire stairs. The interior consists of masonry walls, fire walls, fire stair, fire stair walls. The maintenance facility has mechanical systems to include a dual compressor compressed air system, overhead vehicle exhaust systems and central oil and lube systems. All of these systems are fed from an above base flood elevation platform for storm security. All wash water flows to a spill contained system, also located above base flood elevation, where it is treated and released to a sanitary sewer and collected for recycling.



EAST ELEVATION

SHAW DESIGN GROUP, P. A.

RELATED PROJECTS

AMERICAN TRUCKING OFFICE FACILITY & SHOPS

completed in 2012

Gulfport, Mississippi

Project Size

41,500 sq. ft.

Construction Value

\$6 Million



PROJECT DESCRIPTION

Shaw Design Group, P.A. performed professional architectural services including design and construction documents for an new 41,500 s.f. office, maintenance shop and truck wash facility.

Included in the scope of work was a master plan of the entire site to include the location of elevations, parking and landscaping on the site itself and the access road.

Located in the environmentally sensitive Turkey Creek flood plan, the project was designed to be a zero run-off site. All rainwater encompassed on the six acre site either evaporates, soaks into the ground, or is collected in the subsurface drainage and fed into a site retention pond, which is home to over 100,000 fish. Through environmentally safe systems of collection and filtration, the water is later utilized for the truck wash and then recycled. During certain weather conditions, new water must be introduces into the system.

The office area, shops, wash and site lighting are all L.E.D., resulting in a decreased energy consumption of 20%.



SHAW DESIGN GROUP, P. A.

RELATED PROJECTS

IRD TECHNICAL SCHOOL & CAFÉ CLIMB

completed in 2014

Gulfport, Mississippi

Project Size

30,000 sq. ft.

Construction Value

\$2.2 Million



PROJECT DESCRIPTION

This project, for which Shaw Design Group, P.A. performed design, construction document production, contract negotiations, construction administration and interior design services, is a 30,000 s.f. comprehensive culinary academy for low-income and disadvantaged young adults. This educational tool will train students of all aptitude levels to study and learn fundamental skill sets for productive employment in the food service, construction and business industries.

This newly renovated facility is the first of its kind in South Mississippi. Included in this school is a functional teaching kitchen, construction shops and classrooms along with learning environments for teaching G.E.D. training and testing.



SHAW DESIGN GROUP, P. A.

RELATED PROJECTS

ORANGE GROVE ELEMENTARY SCHOOL CAFETERIA

completed in 2013

Gulfport, Mississippi

Construction Value
\$1.5 Million



PROJECT DESCRIPTION

When ARRA (American Recovery and Reinvestment Act) was signed into law, the Build America Bonds became available for school infrastructure projects. As School Board Architect, Shaw Design Group, P.A. was once again commissioned to help provide planning, design, document preparation, bidding oversight and contract administration for projects across the school district. Shaw Design Group, P.A. was amongst the first design professionals in Mississippi to work with the Build America Bonds and helped the school district establish the process for specifying, advertising, awarding and reporting on ARRA projects.

The largest of the ARRA projects to date has been the Orange Grove Elementary School Cafeteria. Shaw Design Group, P.A. provided planning, architectural, civil, structural design and document production, bidding oversight and contract administration.

THE ADMIRALS' GALLEY GULFPORT HIGH SCHOOL

completed in **ON HOLD**

Gulfport, Mississippi

PROJECT DESCRIPTION

This project is a comprehensive culinary academy envisioned for high school students. This multi-dimensional teaching tool will enable students of all ability levels to learn essential skill sets for gainful employment in the restaurant industry.



This new facility will include four businesses: a culinary arts teaching facility with a full service restaurant, an internet cafe, a school retail store and an herb garden. The Admirals' Galley will be the first project of its kind located on a high school campus in the South.

SHAW DESIGN GROUP, P. A.

RELATED PROJECTS

DUPONT ILMENITE ORE HANDLING FACILITY

completed in 2017

Port of Gulfport, Mississippi

Construction Value

\$85 Million

PROJECT DESCRIPTION

In association with, Brown, Mitchell & Alexander, Inc., Simpkins & Costelli, Inc., Gottlieb, Barnett & Bridges, Inc. and Canon Engineering, LLC, Shaw Design Group, P.A. provided professional architectural services required for the design and construction of the operations office buildings for a new ilmenite ore handling and storage facility on the immediate south end of the west pier at the Port of Gulfport.

The project consists of two elevated control buildings, a 2,800 s.f. outbound and a 425 s.f. inbound building. These buildings provide the equipment, offices and support spaces necessary to control the daily operations of the facility. Shaw Design Group, P.A. provided general architectural services including design development and production of construction documents, in addition to a future role in construction administration.

ENTRANCE COMPLEX

completed in 2014

Port of Gulfport, Mississippi

Construction Value

\$2 Million



PROJECT DESCRIPTION

Shaw Design Group, P.A., in association with, Brown, Mitchell & Alexander, Inc., Simpkins & Costelli, Inc. and Canon Engineering, LLC, provided professional architectural services required for the design and construction of the main gateway to the Port of Gulfport, known as the Entrance Complex.

The Entrance Complex includes the inspection lanes, a guard house and a canopy consisting of a space truss structure. In addition, Shaw Design Group, P.A. coordinated the transition and compatibility between the Entrance Complex and other ongoing port projects with Lanier and Associates.

SHAW DESIGN GROUP, P. A.

RELATED PROJECTS

BLACKWATER RIVER CORRECTIONAL FACILITY

completed in **2010**

East Milton, Florida

Electrical Construction Cost

\$11 Million

PROJECT DESCRIPTION

Electrical Engineer designing not only normal power & electrical distribution and communication systems, but also uninterruptable emergency power and fire alarm. Designed electrical systems for eight buildings. totaling 397,039 sq. ft.

FORREST COUNTY DETENTION CENTER

completed in **2010**

Hattiesburg, Mississippi

Electrical Construction Cost

\$3 Million

PROJECT DESCRIPTION

Designed electrical system for a new detention center of approximately 113,000 sq. ft. Systems included: Lighting, power distribution, emergency generator, paging, fire alarm, access control, CCTV, and detention door locking / control system. Served as Electrical Design Engineer and consultant through construction.

LASALLE DETENTION CENTER

completed in **2009**

East Milton, Louisiana

Electrical Construction Cost

\$3 Million

PROJECT DESCRIPTION

Designed electrical system for existing building renovation of approximately 46,000 sq. ft.; and a new building addition of approximately 87,800 sq. ft. Systems included: Lighting, power distribution, emergency generator, paging, & fire alarm. Served as Electrical Design Engineer, and as consultant through construction.

RELATED PROJECTS

BRANDON CITY HALL RENOVATIONS

completed in 2011

Brandon, Mississippi

Electrical Construction Cost

\$125,000

PROJECT DESCRIPTION

Designed electrical system for a 27,000 square foot multipurpose space in the City of Brandon municipal complex. Facility included meeting rooms, catering kitchen and auditorium style space. Electrical systems included: lighting, power distribution, telephone and data systems, and fire alarm. Electrical Engineer and consultant.

RANKIN COUNTY DETENTION CENTER ADDITION

completed in 2010

Brandon, Mississippi

Electrical Construction Cost

\$1.3 Million

PROJECT DESCRIPTION

Designed electrical system for a building addition of approximately 22,400 sq. ft. Systems included: Lighting, power distribution, emergency generator, paging, fire alarm, access control, CCTV, and detention door locking / control system. Served as Electrical Design Engineer and consultant through construction.

RICHLAND CITY HALL RENOVATIONS

completed in 2011

Richland, Mississippi

Electrical Construction Cost

\$10,500

PROJECT DESCRIPTION

Renovated electrical system for a 1,900 square foot City Hall for the City of Richland. Electrical systems included: lighting, power distribution, fire alarm system, pneumatic tube station and telephone and data systems. Electrical Engineer and consultant.

RELATED PROJECTS

RICHLAND CITY NEW POLICE STATION

completed in **2014**

Richland, Mississippi

Electrical Construction Cost

\$325,000

PROJECT DESCRIPTION

Designed electrical system for a new building of approximately 20,000 sq. ft. Systems included: Lighting, power distribution, emergency generator, paging, access control, and CCTV. Served as Electrical Design Engineer and consultant through construction.

PASS CHRISTIAN POLICE AND EOC

completed in **2011**

Pass Christian, Mississippi

Electrical Construction Cost

\$490,000

PROJECT DESCRIPTION

Provided electrical engineering services for the design and construction of an 11,500 sq.ft. police station and emergency operation center. Systems included: Lighting, power distribution, lightning protection, emergency generator, UPS, fire alarm system, access control, CCTV, television and data cabling and security system. Design Electrical Engineer and consultant.

MADISON COUNTY FIRE STATION

completed in **2011**

Madison, Mississippi

Electrical Construction Cost

\$67,000

PROJECT DESCRIPTION

Provided electrical engineering services for the design and construction of a 3,500sq.ft. fire station. Systems included: Lighting, power distribution, emergency lighting, fire alarm system, television and data cabling. Design Electrical Engineer and consultant.

RELATED PROJECTS

BYRAM POLICE STATION

completed in **2011**

Byram, Mississippi

Electrical Construction Cost

\$55,000

PROJECT DESCRIPTION

Provided electrical engineering services for the design and construction of a 5,000sq.ft. police station. Systems included: Lighting, power distribution, access control, CCTV, television and data cabling. Design Electrical Engineer and consultant.

JONES COUNTY FEMA SHELTERS

completed in **2011**

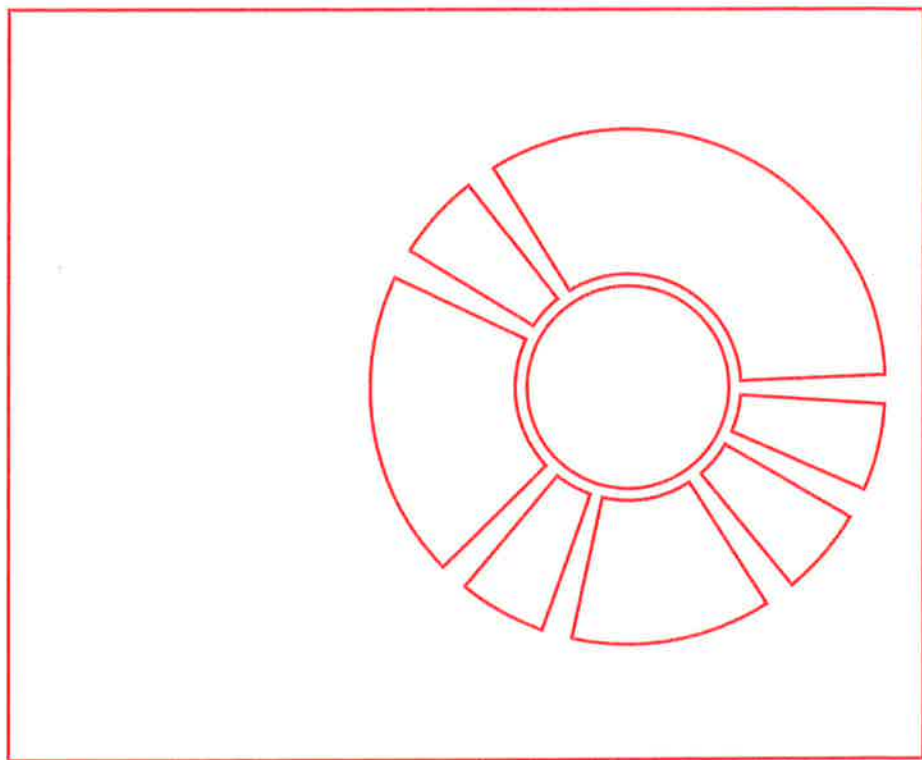
Laurel, Mississippi

Electrical Construction Cost

\$300,000

PROJECT DESCRIPTION

Provided electrical engineering services for the design and construction of a 12,500 sq. ft. FEMA shelter. Systems included: Lighting, power distribution, emergency generator, fire alarm system, television and data cabling. Design Electrical Engineer and consultant.



APPENDIX

Glen East

Superintendent of Education
Gulfport School District
2001 Pass Road
Gulfport, MS 39501
(228) 865-4600
glen.east@gulfportschool.org

E.J. Gibert

Trebig Properties
43 Franham Place
Metairie, LA 70005
(504) 782-6098
trebig@eatel.net

John Webb

Director of Engineering
MS State Port Authority
PO Box 40
Gulfport, MS 39502
(228) 865-4300
jwebb@shipmspa.com

Brad Frischhertz

Lanier & Associates
4101 Magazine Street
New Orleans, LA 70115
(504) 895-0368
bfrischhertz@lanier-engineers.com

Phyllis Addudell

12311 Ashley Drive North
Gulfport, MS 39503
(228) 832-6010
phyllis.aduddell@edwardjones.com



DELBERT HOSEMANN
Secretary of State

Office of the Secretary of State
Jackson, Mississippi

Certificate of Good Standing

I, C. DELBERT HOSEMANN, JR., Secretary of State of the State of Mississippi, and as such, the legal custodian of the records as required by the laws of Mississippi, to be filed in my office, do hereby certify:

That on the 26th day of March, 1984, the State of Mississippi issued a Charter/ Certificate of Authority to:

SHAW DESIGN GROUP, P.A.

That the state of incorporation is Mississippi.

That the period of duration is perpetual.

That according to the records of this office, Articles of Dissolution or a Certificate of Withdrawal have not been filed.

That according to the records of this office, a current Annual Report has been delivered to the Office of the Secretary of State.

I further certify that all fees, taxes and penalties owed to this state, as reflected in the records of the Secretary of State, have been paid and that the corporation is in existence or has authority to transact business in Mississippi.

That insofar as the records of this office are concerned, the said SHAW DESIGN GROUP, P.A. is in good standing at this time.

Given under my hand and seal of office
the 18th day of April, 2017

A handwritten signature in black ink that reads "C. Delbert Hosemann, Jr." written over a horizontal line.

C. DELBERT HOSEMANN, JR.
Secretary of State

Certificate Number: CN17035819

Verify this certificate online at <http://corp.sos.ms.gov/corpcnv/verifycertificate.aspx>



**THE MISSISSIPPI STATE BOARD OF
ARCHITECTURE**

certifies that it has registered and authorized to practice in the State of Mississippi

Philip Shaw

as

ARCHITECT

In testimony whereof this certificate has been issued by the authority of this board.
Certificate No. 1152

*The registration is in good standing as of Wednesday, April 19, 2017.
Renewal of this registration is due on Thursday, November 30, 2017.*

Director

PROFESSIONAL LICENSE