



161 Lameuse Street, Suite 201
Biloxi, MS 39530-3810

DALE PARTNERS ARCHITECTS REQUEST FOR QUALIFICATIONS
FOR: PROFESSIONAL SERVICES TO DESIGN AND CONSTRUCT
A JUVENILE DETENTION CENTER IN HARRISON COUNTY,
MISSISSIPPI

RECEIVED
JUN 26 2017
Chancery Clerk
BY: *[Signature]* D.C.
[Signature]

HARRISON COUNTY BOARD OF SUPERVISORS
C/O CHANCERY CLERKS OFFICE
PO DRAWER CC
GULFPORT, MS 39502



Response to Request for Qualifications for: Professional Services to Design and Construct a Juvenile Detention Center Harrison County, Mississippi



ORIGINAL



June 26, 2017

Harrison County Board of Supervisors
C/O Chancery Clerks Office
1801 23rd Avenue
Gulfport, MS 39502

T. Doug Dale, AIA

Jeffrey R. Barnes, AIA

Leigh G. Jaunsen, AIA, LEED AP

Russ S. Blount, AIA, LEED AP

Jason M. Agostinelli, AIA

In memory of
Michael A. Barranco, AIA
1962-2011

Re: PROFESSIONAL SERVICES TO DESIGN AND CONSTRUCT A JUVENILE DETENTION CENTER IN HARRISON COUNTY, MISSISSIPPI

Dear Selection Committee Members:

The goal of a Juvenile Detention Center is to rehabilitate residents to reduce recidivism and be flexible to house a changing population. Harrison County needs a new juvenile detention facility that is the embodiment of this goal. Dale Partners Architects, located in Biloxi, has experience designing correctional facilities.

Working with Mathes Brierre Architects, our justice consultant, who recently completed the new Juvenile Justice Center in New Orleans, we can provide you a facility that will meet the latest federal regulations. A Juvenile Detention Center must provide more than beds. We have created a team that can address classrooms, food service, security, medical services and sustainability. We will work with you to develop your list of needs that will assist us in designing the facility, and put your vision in place.

I will lead the team, bringing my healthcare experience. Shelby Mitchell, AIA, will be our project architect, using the best practices he has developed through numerous correctional facilities. Neil Polen, AIA, will serve as project architect and also provide construction administration. Futch Design, who worked on the Terrebone Parish and Calcasieu Parish Juvenile Justice Detention Centers, will provide food service design. Mechanical and Electrical engineering will be provided by Gulf States Engineering, who worked on the Harrison County Adult Detention Center. Simpkins and Costelli will serve as structural engineer, Burns Cooley Dennis as geotechnical engineer, and Garner Russell will be providing civil engineering. As budgets are a driving force in any project, we have secured the services of M3 Cost Estimating to assist with pricing the project so that we design a facility for your budget.

The majority of our team are Harrison County businesses. We want to serve our county in providing the best facilities for the needs of the area. We appreciate the opportunity to respond to the RFQ, and we are ready to begin today working on the Juvenile Detention Center.

Sincerely,



DALE PARTNERS ARCHITECTS, P.A.

Architecture • Interiors • Planning

161 Lameuse Street, Suite 201
Biloxi, MS 39530

P 228.374.1409 • F 228.374.1414

dalepartners.com

Leigh G. Jaunsen, AIA, LEED AP, Partner
Dale Partners Architects, P.A.

TABLE OF CONTENTS

Tab 1

Qualifications List



Tab 2

Experience Information



Tab 3

Capacity for Performance





TAB 1
Qualifications List

FIRM PROFILE

Dale Partners Architects P.A. is one of the largest full service architectural firms in Mississippi with offices in Jackson and Biloxi. Since its inception, Dale Partners has sought a higher level of professional experience for its clients. This goal of strong relationships, including continuous principal involvement and quality service, has guided our growth and development for many years.

Dale has a repeat client base of over 80%—a significant contributor to our long term success both financially and in leading-edge design. We strongly advocate a philosophy that embraces the client as part of the team from day one, and we establish a tight network of communications to facilitate the flow of information. This platform of communication will assist you, the client, and our team throughout all phases of the project.



Our architectural experience consists of justice, educational, hotel/hospitality, corporate, medical, governmental, religious, sport, parking and master planning projects. LEED and sustainable design are major components in architecture, and our firm is credited with the first “green” building in our state.

Our expertise has earned our firm 95 design-related awards including a “Top Design Firm” distinction. We feel the work speaks for itself—that our commitment is evident not only in the resulting projects but also by the testimonies of our clients.

Having been in business for over 36 years, T. Doug Dale, AIA, along with partners Jeff Barnes, AIA, Leigh Jaunsen, AIA, LEED AP, Russ Blount, AIA, LEED AP and Jason Agostinelli, AIA, has developed his practice into one that believes in client-relationship management. The principals and team that you start with for programming, master planning and conceptualization are the same principals and team that will be there during construction. The Dale Team will use its experience to strive toward the highest level of success for you, the client, to produce the best project possible.

SERVICES

- Architecture
- Interior Design
- Planning
- Master Planning
- Site Analysis & Selection
- Feasibility Study
- Programming/Needs Assessment
- Landscape Architecture
- Sustainable/LEED Design
- Space Planning
- Furniture/Fixtures/Equipment
- Graphics
- Construction Administration
- Traditional Neighborhood Development

27 EMPLOYEES

CONTACT US

dalepartners.com

161 Lameuse Street, Suite 201
Biloxi, MS 39530

228.374.1409

- T. Doug Dale, AIA
- Jeffrey R. Barnes, AIA
- Leigh G. Jaunsen, LEED AP, AIA
- Russell S. Blount, LEED AP, AIA
- Jason Agostinelli, AIA
- In Memory of Michael A. Barranco, AIA, 1962-2011

FOCUSING ON DESIGN, EMPHASIZING RELATIONSHIPS.

Harrison County Juvenile Detention Center





DALE PARTNERS ARCHITECTS



LEIGH JAUNSEN, AIA, LEED AP BD+C
Principal-in-Charge



SHELBY MITCHELL, AIA
Project Manager



NEIL POLEN, AIA, LEED GREEN ASSOC.
Project Architect



KENNY KING
Interior Designer

CONSULTANT TEAM

MATHES BRIERRE ARCHITECTS
Justice Consultant

SIMPKINS & COSTELLI
Structural Engineer

GULF STATES ENGINEERING
Mechanical and Electrical Engineer

A. GARNER RUSSELL & ASSOCIATES
Civil Engineer

BURNS COOLEY DENNIS
Geotechnical Engineer

M3 CONSULTING
Cost Estimator

FUTCH DESIGN
Food Service Design



OUR CONSULTANTS

Mathes Brierre Architects
Justice Consultants

Mathes Brierre
ARCHITECTS

Mathes Brierre Architects of New Orleans, Louisiana, is the latest evolution of a design firm founded in 1891 by Charles A. Favrot and L.A. Livaudais. The firm has changed names several times during the course of a century, but remains one of the oldest and consistently successful architectural firms in the country. The company's present name, Mathes Brierre Architects, was adopted in 2001, under the leadership of Edward C. Mathes, AIA, Chairman, and Creed W. Brierre, FAIA, President. Our expertise is well grounded through the design of many building types over the years which include: music and performance arts facilities, public assembly buildings, medical facilities, corporate offices, high-rise residential buildings, and other examples of fine civic architecture. The firm continues to provide a full range of architectural services internationally from architecture and interior design to landscape architecture, master planning and construction administration.

Simpkins and Costelli
Structural Engineer



Simpkins & Costelli, Inc. (SCI) was established in 1981, following the firm of Simpkins Engineering Consultants, started in 1973, and has grown into a comprehensive Consulting Engineering firm offering professional services in the field of Civil and Structural engineering including project management, construction administration services, feasibility studies, investigations and expert testimony to a wide variety of clients. Originally established as Simpkins Engineering by Mr. Harry M. Simpkins, III, the firm has grown in size and abilities and has earned the reputation as one of the strongest engineering firms on the Mississippi Gulf Coast. Mr. Simpkins retired in 1998.

Michael R. Costelli joined the firm in May 1980 and became President and sole Owner in 1998 upon Mr. Simpkins' retirement. Under Mr. Costelli's leadership, the firm has grown; expanding staff and services.

For over 37 years, SCI has earned recognition from its clients as a competent consulting engineering firm. SCI has established an excellent reputation with clients who value the firm's ability to provide a quality product in a cost-effective and timely manner. This reputation is built on the experience and skills of highly trained, conscientious professionals who are dedicated to quality performance. Many clients have returned to SCI repeatedly over the years for these reasons.

It is the intent of the firm to provide competent professional service with each project receiving continuous personal attention. A primary goal is to handle all phases of a project in an expedient and efficient manner to minimize cost and to insure timely utilization of the facility.

Harrison County Juvenile Detention Center



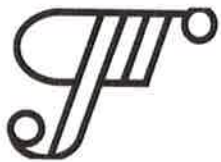
Gulf States Engineering
Mechanical and Electrical Engineer



GSE is a full discipline engineering firm incorporated in Mississippi, Alabama and Tennessee. Responsible for over \$4B in capital investments in the last 6 years, GSE is a full-discipline engineering firm licensed in over 25 states. With nearly twenty years of experience, GSE has developed a level of diversity that makes us uniquely qualified to handle the challenges of designing the facility our clients need and building it on schedule and on budget. Most projects have required GSE to drive a specialized contract delivery approach including fast-track, multiple contractor, procurement, etc. As part of our success strategy, GSE's principal team limits our target projects to those fitting our unique skill set. This allows us to provide optimal service with the design teams built specifically for the project at hand.

A. Garner Russell & Associates

Civil Engineer



The firm of A. Garner Russell & Associates is a multi-disciplined Civil Engineering firm headquartered in Gulfport, Mississippi, that performs all types of Civil Engineering services in the Mississippi Gulf Coast Area. Our branch office has been located in Biloxi, Mississippi since 2009.

Over the years the firm has provided planning, surveying and engineering services for Permitting, Water, Sewer, Drainage, Roadway, Public Works, and Harbor Construction projects totaling many millions of dollars. The projects have varied over the entire spectrum of Civil Engineering being performed for many different and varied clients. Having conducted business in the Gulf Coast Area since 1969, the firm is familiar with all local, State and Federal agencies who regulate, provide funding such as SRF, CBDG, and CIAP, and approve Public Works projects for the Mississippi Coastal Area.

The firm has maintained a constant team over the years with 14 members who have been employed by the firm for 10 years or longer. Currently, the firm has 21 employees. In performing this work the firm has developed a reputation as a highly professional company with the utmost integrity who gets the work accomplished with expertise in an economical and timely manner.

Burns Cooley Dennis
Geotechnical Engineer

BURNS COOLEY DENNIS, INC.

Geotechnical and Materials Engineering Consultants

Burns Cooley Dennis, Inc., understands that each geotechnical engineering project is unique and requires an individualized approach. Each member of the senior engineering staff holds a Master of Science degree in geotechnical engineering. Two members of our staff hold a Ph. D. The number of years of experience ranges from five to 38. The principals of the firm, as well as the staff engineers, are actively engaged in projects on a daily basis. The staff is experienced in computer-aided geotechnical engineering and uses this technology in all phases of engineering analyses and drafting, data management and presentations.

M3 Construction Services, Inc.
Cost Estimator



M3 Construction Services Inc. (M3CS) is a Small Business Administration Certified Economically Disadvantaged Woman Owned Small Business (EDWOSB) and will perform construction cost estimating services for this project. M3CS also performs scheduling services. M3CS was established October 16, 2008 and has one office located at 1535 Adair Boulevard in Cumming, Georgia. Currently, M3CS employs two full time and two part time employees.

Futch Design Associates, Inc.
Food Service Design



Futch Design Associates, Incorporated is an independent professional food service facility design/consulting firm formed in 1966, offering comprehensive services to hospitality, education, health care, and correctional institutions. We are not in any way associated with the manufacture or sale of food service equipment and receive remuneration exclusively from rendering professional consulting/design services. Our services include needs assessments, schematic design studies/drawings, design development phase drawings, contract document drawings, cost estimating, food service equipment specifications, construction administration services, and site visits to ensure a well-coordinated design to meet project requirements. Our interest is to provide our clients with the highest level of expertise and services available, undertaking each assignment as a unique challenge. Our firm has been rated among the top 50 food facility design firms in the United States for the past twenty (20) years with the rating based upon dollar volume of equipment specified.

Harrison County Juvenile Detention Center



LEIGH JAUNSEN, AIA, LEED AP BD+C

Principal-In-Charge, Dale Partners



Leigh Jaunsen will be the principal-in-charge and construction administrator for this contract. Her responsibilities will include the overall management of the team's services related to the project, including all administrative and technical services, from project start to finish. Leigh will lead the design effort and monitor the flow of work and work delivery. Leigh will be the owner's point of contact for all scheduling, contractual and billing communications as well as design intent and conflict resolution, should the need arise. She will also handle the project specifications. Leigh is a member of the American Institute of Architects and is a LEED-accredited professional. She is a member of the United States Green Building Council and is a partner in our firm. She has served as principal-in-charge for all of our Gulf Coast work including the following projects listed below.

Education

Georgia Institute of Technology, Bachelor of Science in Architecture, 1987

Georgia Institute of Technology, Master of Architecture, 1991

Registrations

Registered Architect in the State of Mississippi, #3923, 2005

Affiliations

Member,
American Institute of Architects

LEED-Accredited Professional, Specializing in Building Design and Construction

President, Ocean Springs Rotary Club

Member, Gulf Coast Business Council

Relevant Project Experience

- Mississippi Department of Corrections Work Center, Gulfport, MS
- Jackson County Mississippi Department of Corrections, Pascagoula, MS
- Pass Christian Police Complex and Emergency Operations Center, Pass Christian, MS
- Field Maintenance Shop #4, Mississippi Army National Guard, Gulfport, MS
- MGM Park Baseball Development Parking Garage, Biloxi, MS
- Gulfport Sportsplex, Gulfport, MS
- Mississippi State University Science & Technology Center, Stennis Space Center, MS
- Municipal Pier & Harbor, Bay St. Louis, MS
- Municipal Harbor Feasibility Study, Bay St. Louis, MS
- Peoples Bank, Pass Christian, MS
- Peoples Bank Money Center, Biloxi, MS
- Maritime & Seafood Industry Museum, Biloxi, MS
- Pascagoula Waterfront Development, Pascagoula, MS
- Biloxi Waterfront Park, Biloxi, MS
- Hancock County Storm Preparedness Facility, Kiln, MS
- River Chase Village Nursing Home, Gautier, MS
- Lighthouse Park and Visitors Center, Biloxi, MS
- Lighthouse Park and Visitors Center Phase II, Biloxi, MS
- Lighthouse Park and Visitors Center Statue Renovation, Biloxi, MS
- Point Cadet South, Biloxi, MS
- Tradition Office Building, Tradition, MS
- Urban Renewal Agency, Biloxi, MS
- Biloxi Public Library and Civic Center, Biloxi, MS
- Biloxi Lighthouse Renovation, Biloxi, MS
- Gray Slay House Renovation, Biloxi, MS
- White House Fountain Renovation, Biloxi, MS
- Dale Partners Architects Offices, Biloxi, MS
- Biloxi Boardwalk Resort, Biloxi, MS
- Vieux Crescente Resort and Marina, Biloxi, MS
- Bon Secour Village, Gulf Shores, AL

SHELBY MITCHELL, AIA

Project Manager / Security Specialist, Dale Partners



Shelby Mitchell has over 39 years experience in the design of corrections facility planning and design with specific emphasis on security systems design. This extensive experience encompasses total facility development from programming and construction documents through final inspection of facilities.

Relevant Project Experience

- Harrison County Jail Renovation, Harrison County, MS – \$1.5 Million
- Jackson Hinds County Juvenile Detention Center, Jackson, MS – Corrections Design Consultant
- Mississippi Department of Corrections Work Center, Gulfport, MS
- Hinds County Detention Center Renovation, Raymond, MS
- Federal Detention Center, Federal Bureau of Prisons, Philadelphia, PA – Security Design Consultant
- From 2006-2008, Shelby consulted with the city of Jackson and developed designs for potential detention centers in the area for the city to consider for development.
- Tuscaloosa Detention Center, Tuscaloosa, AL – Security Design Consultant
- State of California Detention Center – \$250.0 Million, 2,500 beds
- Santa Rosa County Jail, Santa Rosa County, FL – \$ 7.0 Million, 150 beds
- Travis County Jail, Travis County, TX – \$7.4 Million, 276 beds
- Bullock County Jail, Bullock County, AL – \$5.0 Million, 150 beds
- Pike County Jail, Pike County, MS – \$5.0 Million, 150 beds
- Tuscaloosa County Jail, Tuscaloosa County, AL – \$7.0 Million, 200 beds
- East Mississippi Correctional Facility Expansion, Lauderdale County, MS
- Walnut Grove Correctional Facility, Walnut Grove, MS
- Leflore County Jail, Greenwood, MS – Prime Corrections Architect (Joint Venture)
- Low Security FCI / Federal Prison Camp, Federal Bureau of Prisons, Yazoo City, MS – Prime Corrections Architect
- U. S. Penitentiary Expansion, Federal Bureau of Prisons, Atlanta, GA – Corrections Design and Security Architect
- East Mississippi Correctional Facility, Lauderdale County, MS – Design / Build Architect
- Mississippi State Penitentiary, Maximum Security Prison, Parchman, MS – Prime Corrections Architect
- Unit 29, Medium Security Prison Complex, Mississippi State Penitentiary, Parchman, MS – Prime Corrections Architect
- Unit 29, Medium Security Prison Complex Renovations, Mississippi State Penitentiary, Parchman, MS – Prime Corrections Architect
- Central Mississippi Correctional Facility, Rankin County, MS – Prime Corrections Architect
- Federal Detention Center, Federal Bureau of Prisons, Miami, FL – Security Design Consultant
- Chattooga Correctional Facility, Georgia Department of Corrections – Security Design Consultant
- Telfair Correctional facility, Georgia Department of Corrections – Security Design Consultant
- Clayton Correctional Facility, Alabama Department of Corrections – Prime Corrections Architect

Education

Louisiana State University,
Bachelor of Science in
Architecture, 1977

Registrations

Registered Architect in
the State of Mississippi,
#1603, 1980

Affiliations

Member,
American Institute of
Architects

NEIL POLEN, AIA LEED GREEN ASSOCIATE

Project Architect, Dale Partners



Neil has over five years of experience and is a licensed architect in the state of Mississippi. He is a LEED Green Associate as designated by the United States Green Building Council and serves as project architect for Dale Partners. He will assist with the contract drawings for the Harrison County Juvenile Detention Center project.

Relevant Project Experience

- Starbuck's Café, Harrah's Gulf Coast, Biloxi, MS
- Concourse Improvements at the Jackson-Medgar Wiley Evers International Airport, Jackson, MS
- Jackson-Medgar Wiley Evers Airport Signage, Jackson, MS
- Wind Creek Montgomery Hotel & BB King's Blues Club, Montgomery, AL
- Project Cumulus, Starkville, MS
- 200 East Capitol Street, Jackson, MS
- Smoothie King, Brandon, MS
- CAET Wine Bar, Jackson, MS
- BB King's Blues Club, Orlando, FL
- Lafayette's Music Room, Orlando, FL
- Pottery Studio and Entry Canopies, Jackson Preparatory School, Flowood, MS
- Belhaven Housing, Jackson, MS
- Family Worship Center, Leland, MS
- Trinity Baptist Church, Vicksburg, MS*
- Fondren Public, Jackson, MS*
- Midtown Safe Routes to School Planning, Jackson, MS*
- Keener Business Incubator Renovation, Jackson, MS*
- 2011 Downtown Meridian Master Plan, Meridian, MS*
- 2011 Jackson Prep Capital Campaign, Flowood, MS*
- Boys & Girls Design Camp, Jackson, MS*
- 2010 Old Coca Cola Plant Renovation Study, Jackson, MS*
- Two Habitat for Humanity Houses (LEED)*
- Residential Projects, both new construction and renovation including some historic*
- Existing conditions surveys for retail developments*

Education

Mississippi State University, Bachelor of Architecture, 2010

Registrations

Registered Architect in the State of Mississippi, #5172, 2016

Affiliations

Member, American Institute of Architects

LEED Green Associate Certification, 2013

*Completed while working with Seabold Architectural Studio

KENNY KING

Interior Designer, Dale Partners



Kenny King has over 33 years of experience and will act as interior designer. He will conceptualize, select, and document all interior finishes in keeping with the building’s design as directed by Dale Partners’ architectural design team. Kenny will also be responsible for preparing color and finish boards, presenting interior design proposals to the client for approval, creation of space, furniture and finish plans, detail mill-work, architectural accouterments and specialty installations. He will also design custom case goods, cabinetry, select furnishings and prepare FFE budgets as required.

Relevant Project Experience

- Singularity University – NASA Ames Moffet Field, Mountain View, CA
- Eastwick Communications - San Francisco, Sunnyvale, CA
- Hotwire – San Francisco, CA
- Silicon Valley Bank – Santa Clara, CA
- De Leon Realty - Palo Alto, CA
- Kaufman and Broad Homes – San Ramon, Livermore, Dublin, Fremont, San Jose, Hayward, Brentwood,
- D.R. Horton – Fresno, Sacramento, Elk Grove, Fremont, Campbell, San Ramon, Milpitas, Manteca, Roseville, Vacaville, Dublin, Brentwood, CA
- Merrill Lynch – San Francisco
- Google – Mountain View, CA
- Shea Homes – Livermore, San Mateo, San Jose, Brentwood, San Ramon, Dublin,
- NASA – Ocean Springs, MS
- Disneyworld
- Euro Disneyland
- Kelloggs – Battle Creek, MI
- Volvo – Rockleigh NJ
- Hershey – Hershey, PA
- TCBY – Little Rock AR
- King Abdulaziz University Medical Center – Jeddah, Saudi Arabia
- Jackson, MS Veterans Hospital
- Murray County Hospital – Murray County Kentucky
- City of Chicago, IL City Hall
- Frank Loyd Wright Foundation – Oak Park, IL
- Liang Xiang College – Beijing China
- Tian Zi Area D – Beijing China
- Bi Gui Yan Kindergarten – Beijing China
- Bi Gui Yan Real Estate Company – Beijing China
- Holiday Inns of America – Memphis TN
- Red Lion Inns – San Jose, CA
- Fess Parker Double Tree Resorts – Santa Barbara, CA
- Embassy Suites – Memphis, TN
- Swan and Dolphin Resort Hotels – Disneyworld

Education

Delta State University,
B.F.A Commerical Design.,
1983

Belhaven College, Interior
Design, 1986

Evergreen Valley
College, San Jose, CA,
3-Diminsional Design,
2008

Affiliations

Allied Member, American
Institute of Architects

28 Years ownership of
Architectural Interior
Design Firm

Member, California
Legislative Coalition of
Interior Designers

Member, National
Association of the
Remodeling Industry



TODD C. JAMES

Executive Vice President and Principal, Mathes Brierre Architects

Education

Tuskegee University,
Bachelor of Architecture,
2003

Affiliations

City of New Orleans,
Board of Zoning
Adjustment, Vice Chair

New Orleans Public Belt
Railroad, Commissioner

New Orleans Regional
Leadership Institution,
Class of 2013

Mr. James provides a rare background of project management and regulatory advisement experience to Mathes Brierre Architects. Over his fifteen years of experience, he has gained experience having worked as Senior Project Manager / Quality Assurance Manager for the ongoing Recovery projects for the City of New Orleans. Since then Mr. James continues to serve among several planning and zoning committees for the City of New Orleans. Mr. James continues to expand his planning and land use expertise across the Gulf Coast, assisting in a multitude of planning and land-use projects that have helped to support the varying communities across the region.

Relevant Project Experience

- Loyola University – Institutional Masterplan, New Orleans, LA
- Corpus Christi Epiphany Catholic Church – Community Center Land-Use Advisement, New Orleans, LA
- Broadmoor Wellness Center- Community Center Land-Use Advisement, New Orleans, LA
- Greater Works Community Center- Land-Use Advisement, New Orleans, LA
- Deutsches Haus New Orleans- Land-Use Advisement, New Orleans, LA
- 400 Canal Street Hotel Development- Land-Use & Governmental Affairs Advisement, New Orleans, LA
- Virgin Hotels New Orleans- Land-Use & Governmental Affairs Advisement, New Orleans, LA

SCOTT EVANS, AIA

Principal, Mathes Brierre Architects

Education

Tulane University, Master
of Architecture, New
Orleans, Louisiana

University of Colorado
at Boulder, Bachelor of
Environmental Design,
Boulder, Colorado

Registrations

Registered Architect in
the State of Louisiana
#7432

Mr. Evans joined Mathes Brierre Architects in 2008 with a background in Architectural and Environmental design and over ten years of experience. Since his employment with Mathes Brierre Architects, Mr. Evans has worked as part of the team that completed the renovations to Thomas Hall at Loyola University New Orleans. Additionally, he has assisted with the project management of Phase VI of the National World War II Museum expansion.

Relevant Project Experience

- Additions and Alterations to Thomas Hall, Loyola University, New Orleans, LA
- Visual and Performing Arts Center*, Loyola University, New Orleans, LA
- New Office Building for LSU Health Sciences Center Foundation, New Orleans, LA
- U.S. Freedom Pavilion- Land, Sea, and Air, National World War II Museum Phase VI Expansion, New Orleans, LA
- Renovation of Art Gallery, Gallery Bienvenu, New Orleans, LA*
- Sydney and Walda Bestoff Sculpture Garden, New Orleans, LA*
- Comprehensive Damage Report, Algiers Courthouse, New Orleans, LA*
- Comprehensive Damage Report, Second District Police Station, New Orleans, LA*
- Comprehensive Damage Report, St. Roch Market, New Orleans, LA*

**Denotes work performed prior to employment with Mathes Brierre Architects.*



ANN SCHMUELLING, AIA, NCARB

Executive Vice President and Principal, Mathes Brierre Architects

Education

Tulane University, Master
of Architecture, New
Orleans, Louisiana

Tulane University,
Bachelor of Architecture

Vanderbilt University,
Bachelor of Arts,
Nashville, Tennessee

Registrations

Registered Architect in
the State of Louisiana
#2734

Ann Schmuelling is a Principal and manager of the team which has been responsible for the exterior and interior design of new corporate offices and headquarters for various clients. As the senior programmer in the office she has planned various corporate headquarters ranging in size from 10,000 square feet to 300,000 square feet. Ms. Schmuelling offers extensive experience in the programming and design of law firms and corporate offices including the offices of Baker Donelson, King Krebs, Steeg Law Firm, Fishman Haygood, Fowler Rodriguez, and GE Capital.

Relevant Project Experience

- New Orleans Immigration Offices, EOIR – Court Relocation, New Orleans, LA
- Renovations and Addition, School of Law, Loyola University, New Orleans, LA
- Office Additions and Renovations, Baker Donelson, Bearman, Caldwell & Berkowitz, PC, Place St. Charles, New Orleans, LA
- Office Renovations, King, Krebs & Jurgens, PLLC, Place St. Charles, New Orleans, LA
- Renovations and Additions, Lee Futrell & Perles, Place St. Charles, New Orleans, LA
- Renovations to Floor 16 & 17 – Pilot Program, Entergy Services, Inc., New Orleans, LA
- New Offices for GE New Orleans Center of Excellence, Place St. Charles, New Orleans, LA
- Renovations for Freeport McMoran, Floors 3, 16, 17, 18 & 19, 1615 Poydras, New Orleans, LA

MICHAEL R. COSTELLI, P.E.

President - Senior Engineer; Principal, Simpkins and Costelli

Education

West Virginia Institute
of Technology, Bachelor
of Science in Civil
Engineering, 1970

Registrations

Registered Engineer in
the State of Mississippi
#6653

Mr Costelli became President/CFO and Sole Owner of Simpkins & Costelli, Inc. on May 1, 1998. Since then, Mr. Costelli has participated in many civil and structural projects including warehouses, port wharves and municipal marina bulkheads, water and wastewater treatment plants, buildings that include schools, hospitals, convention and visitor centers, military housing and administrative facilities, churches, higher education and research facilities, harbormaster facilities, automobile dealerships, and various site work projects for these buildings and other facilities.

Relevant Project Experience

- Juvenile Rehabilitation Facility Renovations, Brookhaven, MS
- Harrison County W13 Western Harrison County Regional Water Supply System
- East Central Harrison County Wastewater Treatment Facility at River Hills (HARCUA CDBG S11), Gulfport, MS
- East Central Harrison County Wastewater Treatment Facility at Tradition (HARCUA CDBG S10), Gulfport, MS
- Mississippi Gulf Coast Coliseum & Convention Center Expansion, Biloxi, MS
- Expansion of West Harrison Wastewater Treatment at DeLisle (HARCUA CDBG S12A), Harrison County, MS

DAVID P. LEBLANC, P.E.

Construction Engineer and Administrator, Simpkins and Costelli

Education

Louisiana State University,
Bachelor of Science in
Civil Engineering

Registrations

Registered Engineer in
the State of Mississippi
#10745

Mr. LeBlanc has over 25 years experience in the field of civil and structural engineering including design and support services on assigned work. He has performed engineering design and specification writing, equipment selection, drafting, material takeoff, cost estimating, submittal reviews, payment requests, change orders, construction inspection, field engineering, field investigations, equipment start-up and testing, I & I field work, flow data analysis and Contractor schedule reviews. Mr. LeBlanc also has over 10 years experience in wastewater design and construction administration and served as resident project engineer for the West Biloxi Wastewater Treatment Facility Upgrade from 1989-1991.

Relevant Project Experience

- Juvenile Rehabilitation Facility Renovations, Brookhaven, MS
- Harrison County W13 Western Harrison County Regional Water Supply System
- East Central Harrison County Wastewater Treatment Facility at River Hills (HARCUA CDBG S11), Gulfport, MS
- East Central Harrison County Wastewater Treatment Facility at Tradition (HARCUA CDBG S10), Gulfport, MS
- Mississippi Gulf Coast Coliseum & Convention Center Expansion, Biloxi, MS

JOHN T. WADE, P.E., F.P.E.

Principal Engineer, Gulf States Engineering

Education

Mississippi State
University, Bachelor of
Science in Mechanical
Engineering

Registrations

Registered Engineer in
the State of Mississippi

As Mechanical and Fire Protection Engineer for Gulf States Engineering, Mr. Wade's experience in engineering design for commercial, general manufacturing, and heavy industry is considerable and current. Mr. Wade has 20 years of professional experience in the design and engineering of mechanical and fire protection systems. This includes process equipment design and specification, HVAC and plumbing design, heat transfer and thermal analysis, pump and piping design, fire suppression system and fire alarm system design, pneumatic conveying and dust collection system design, mechanism design, and project management.

Relevant Project Experience

- Harrison County Adult Detention Center – Harrison County, MS
- Blackwater River Correctional Facility – Milton, FL
- Little Rock Air Force Base – Little Rock, AR
- Columbus AFB- Columbus, MS
- Arkansas AN- Ft. Smith, AR
- Soto Cana Air Base- Soto Cana, Honduras
- Moody Air Force Base- Valdosta, GA
- Hurlburt Field- Pensacola, FL
- Mobile Container Terminal
- University of South Alabama – Mobile, AL

CHRIS DEARMON, P.E.

Mechanical Engineering Lead/Project Manager, Gulf States Engineering

Education

Mississippi State University, Bachelor of Science in Mechanical Engineering

Mr. DeArmon has over 23 years' experience as a consulting engineer in HVAC and plumbing design. Responsibilities include HVAC and plumbing systems design, document preparation and construction administration. Engineering design service has been performed for over 700 commercial, industrial, institutional, educational, and governmental projects.

Registrations

Registered Engineer in the State of Mississippi

Relevant Project Experience

- Mobile County- Metro Jail – Mobile, AL
- Mobile County- License Commissioner Office – Mobile, AL
- Building 9322 NAVO – Stennis Space Center , MS
- Tulane University- Biloxi Campus – Biloxi, MS
- Kemira Laboratory – Mobile, AL
- Mobile Infirmiry Nuclear Medicine Laboratory Renovation – Mobile, AL
- ThyssenKrupp Central Laboratory –Mount Vernon, AL
- Springhill Memorial Hospital – Mobile, AL
- FEMA Tornado Shelter – University of Alabama, Tuscaloosa, AL
- Mobile Regional Airport Renovation – Mobile, AL
- Holy Cross Redevelopment – New Orleans, LA
- ABP – SouthWest Pass, LA

M. SCOTT BURGE, P.E.

President, A. Garner Russell & Associates

Education

Mississippi State University, Bachelor of Science in Civil Engineering

Scott has over 30 years of experience of being employed in both the public and private sector with project administration, management, and design responsibilities for various municipal infrastructure projects, involving water, sewer, drainage, and street construction projects. Previous employment included eight and one-half years as the City Engineer for Gulfport, Mississippi, which responsibilities included project administration and engineering for Public Works projects funded by various local, state and federal programs.

Registrations

Registered Engineer in the State of Mississippi #9550

Relevant Project Experience

- Gulfport, Biloxi, Harrison County Board of Supervisors - Debuys Road Maintenance Overlay
- City of Gulfport 28th Street Improvements (22nd Avenue to 34th Avenue)
- City of Gulfport 2012 City Wide Street Paving Project
- Town of Leakesville Street Paving USDA-RD/RUS Funding



DOUGLAS K. RACKLEY, P.E.

Vice President, A. Garner Russell & Associates

Education

Mississippi State University, Bachelor of Science in Civil Engineering

Douglas has been involved with the surveying, planning, design, permitting, and project administration of numerous public and private sector projects, as well as extensive experience in transportation engineering. He has managed and provided design for numerous MDOT projects and municipal projects.

Registrations

Registered Engineer in the State of Mississippi #18601

Relevant Project Experience

- Gulfport, Biloxi, Harrison County Board of Supervisors- Debuys Road Maintenance Overlay
- City of Gulfport 28th Street Improvements (22nd Avenue to 34th Avenue)
- City of Gulfport 2012 City Wide Street Paving Project
- M.D.O.T. Interstate 10—I110 to SR 609
- M.D.O.T. U.S. Highway 90—Hurricane Katrina Repairs

G. THOMAS DUNLAP

Principal, Burns Cooley Dennis

Education

University of Mississippi, 1990 – Civil Engineer

University of Mississippi, B.S., 1989 – Civil Engineer

University of Mississippi, B.S., 1988 – Geology

Mr. Dunlap has worked on a variety of projects in geotechnical engineering for over 25 years. These projects include buildings, roadways, railway bridges, aviation facilities, wastewater and water treatment facilities, dams, river levees, amusement parks, power plants, electricity substations and transmission lines, commercial and industrial facilities. He has a wide range of general geotechnical experience over geographical regions throughout the United States and in areas outside the U.S. such as Mexico, Central America, the Middle East and Spain.

Relevant Project Experience

- William Carey College Tradition Campus, Harrison County, Mississippi
- Coastal Wildlife Recovery Center, Lyman, Mississippi
- Lyman Fish Hatchery Expansion, Harrison County, Mississippi
- Mississippi Maritime Building, Pascagoula, Mississippi
- Mississippi Sandhill Crane Office/Visitor Center National Wildlife Refuge, Gautier, Mississippi
- NASA Visitor Center- Stennis Space Center, Hancock County, Mississippi
- Ocean Springs Hospital Electrical/Chiller Building, Ocean Springs, Mississippi
- Ocean Springs Hospital Expansion, Ocean Springs, Mississippi

Registrations

Professional Engineer: Mississippi, Missouri, Tennessee

Professional Geologist: Missouri



DANA W. MEIER, CCC

Lead Estimator, M3 Construction Services, Inc.

Education

Southern Institute of Technology, UG Studies, Civil Engineering Technology

Registrations

AACEI Certified Cost Consultant (CCC) / 2008

Mr. Meier is a senior cost engineer with over thirty-five years' experience in construction, cost estimating, and risk management. He has extensive knowledge in estimating complex and diverse projects home and abroad; including DOD, US Navy, US Army, US Air Force, GSA, US DOS, USPS, Federal Reserve Banks, Federal Courthouses and Federal Buildings, Medical Facilities, Research Facilities, K-12 Schools and Universities, Commercial and Military Aviation, Pier and Wharf, Historic Restoration, municipal and state infrastructure, etc. He possesses vast knowledge on numerous automated cost estimating systems including: MCACES, M-II, PACES, Success Estimator, PCEM, and PC Cost.

Relevant Project Experience

- New Ocean Springs High School, Ocean Springs, Mississippi 95% and Final Design
- Jackson-Medgar Wiley Evers International Airport West Concourse Terminal Improvements
- Maintenance, Repairs, Alterations and Addition Picayune Readiness Center, Mississippi Army National Guard, Picayune, MS
- Adult Emergency Renovations, University of Mississippi Medical Center, Jackson, Mississippi
- New Pediatric Emergency Room, University of Mississippi Medical Center, Jackson, Mississippi

GREG FUTCH, FCSI

President and Owner, Futch Design Associates, Inc.

Education

Louisiana Tech University, Business Administration, 1984-1988

Registrations

Professional Member, Foodservice Facilities Consultants Society International (FCSI)

Greg Futch is the President and sole owner of Futch Design Associates, Inc. with an extensive background in kitchen facilities design of all types. He has 27 years of experience providing a multitude of professional services that include needs assessment, cost estimating, space programming, schematic/design development, specification writing, construction document preparation, construction administration and site inspections. Five years prior to his career as a designer/consultant, Greg worked for an equipment contractor as an installation technician.

Relevant Project Experience

- Juvenile Justice Youth Detention Center, New Orleans, Louisiana
- Calcasieu Juvenile Detention Center, Lake Charles, Louisiana
- Terrebonne Parish Juvenile Detention Center, Terrebonne Parish, Louisiana
- Florida Parishes Juvenile Detention Center, Covington, Louisiana
- Forrest County Jail, Hattiesburg, Mississippi
- Rankin County Jail, Rankin County, Mississippi
- Acadiana Center for Youth, Rapides Parish, Louisiana
- Lafourche Parish Correctional Center, Thibodaux, Louisiana
- Louisiana State Penitentiary, Angola, Louisiana
- Bossier Parish Detention Facility, Bossier Parish, Louisiana
- St. Charles Correctional Center, Killona, Louisiana





TAB 2
Experience Information



WALNUT GROVE YOUTH CORRECTIONAL FACILITY

WALNUT GROVE, MISSISSIPPI



CLIENT

Walnut Grove Correctional
Authority
Post Office Box 389
Walnut Grove, MS 39189
601.253.2321

PROJECT OVERVIEW

- Design/Build Architect
- Construction cost:
\$32.0 Million
- 83,950 SF
- 500 beds

PROJECT DESCRIPTION

The original facility was constructed as a maximum security youth facility. The addition of 496 beds, by Dale Partners, was to provide higher security housing areas. The possibility of higher abuse of the physical facility by these youthful offenders (ranging in age up to 22 years old) drove the need for precast concrete cells and sliding cell door devices. The layouts for these buildings provided clear viewing areas to allow proper supervision of these younger offenders. Ample educational, recreational and medical amenities are spread throughout this facility to group offenders in close proximity to their specific support needs. The facility is ACA accredited.



DALE
PARTNERS

JACKSON/HINDS COUNTY JUVENILE DETENTION CENTER

JACKSON, MISSISSIPPI



CLIENT

Hinds County
316 South President Street
Jackson, MS 39201

PROJECT OVERVIEW

- Security Architect
- Construction cost:
\$9.1 Million
- 52,250 SF
- 120 beds

PROJECT DESCRIPTION

Dale Partners provided security design consultant services for the new co-ed juvenile detention facility. The facility houses the entire youth justice system for Hinds County. In addition to the detention area, there is a judicial area where court will be held and counseling takes place. The detention center is two stories and has 84 cells which total 48 single and 36 double cells. The inmate capacity totals 120. The new facility was built on a nine-acre parcel of Jackson Public School District land.

DALE
PARTNERS

CENTRAL MISSISSIPPI CORRECTIONAL FACILITY, PHASES I, II AND III

RANKIN COUNTY, MISSISSIPPI



CLIENT

Mississippi Department of
Corrections
723 North President Street
Jackson, MS 39201
601.359.5600

PROJECT OVERVIEW

- Prime Corrections Architect
- Construction cost:
\$50.0 Million
- 1,625 beds

PROJECT DESCRIPTION

This prison complex was the first state prison to be constructed on property other than the State Penitentiary in Parchman, MS. The complex features three separate facilities unified on a single 70-acre site. The three components consist of a Reception and Classification Center (used for receiving and classifying all inmates entering the state system), a women's facility and a support services facility. The Phase II expansion included additions to the Reception and Classification Center (120 beds), the support services facility (128 beds) and the women's facility (52 beds). The Phase III expansion included a 700-bed prison and a central kitchen facility to serve the entire expanded prison.





EAST MISSISSIPPI CORRECTIONAL FACILITY

MERIDIAN, MISSISSIPPI



CLIENT

The Geo Group, Inc.
One Park Place, Suite 700
621 Northwest 53rd Street
Boca Raton, FL 33487
866.301.4436

PROJECT OVERVIEW

- Design/build architect
- Construction cost:
\$27.5 Million, phase I
\$30.0 Million, phase II
- 1,000 beds, phase I
500 beds, phase 2

PROJECT DESCRIPTION

Dale Partners provided services for the design/build of a new ACA and NCCHC-accredited, 500-bed private prison, expandable to 1,000 beds. The facility houses sentenced "special needs prisoners," those defined as inmates who are emotionally disturbed and who sometimes require medication. The design includes four pods of 125 single cells each that include a special orientation pod dedicated to housing new inmates in suicide-resistant equipped cells adjacent to an inmate assessment center. The facility provides decentralized services to limit unnecessary inmate movement including unit management offices, counseling rooms, medical exam areas, commissary and exercise yards. In 2007, we provided design for the expansion of the facility from 1,000 to 1,500 beds.



DALE
PARTNERS**FOREST HAYES CORRECTIONAL FACILITY**

CHATTOOGA COUNTY, GEORGIA



CLIENT

State of Georgia – Corrections
Department
2 MLK Junior Drive, Southeast
1566 Twin Towers East
Atlanta, GA 30334
404.656.2809

PROJECT OVERVIEW

- Security Architect
- Construction cost:
\$20.0 Million
- 500 beds

PROJECT DESCRIPTION

Our firm provided security consultation services to the prime architect on these two major prison complexes for the state of Georgia. The facilities consist of 13 building complexes which include eight housing buildings to accommodate 62 inmates each (three are upper-level medium security units and five are medium security units), administrative / visitation building, medical building, maintenance building, food service (kitchen / dining), prison industries / educational building and double perimeter fencing and loop roads. A site plan and floor plans were developed for the construction of the facility. We also provided construction documents for all security equipment included in the facilities.





1,000-BED METROPOLITAN DETENTION CENTER

PHILADELPHIA, PENNSYLVANIA



CLIENT

Federal Bureau of Prisons
320 First Street Northwest,
#5008
Washington D.C. 20534
202.514.6460

PROJECT OVERVIEW

- Security Architect
- Construction cost:
\$60.0 Million
- 1,000 beds

PROJECT DESCRIPTION

Dale Partners provided design services, contract drawings, specifications and cost estimates for security hardware, locking devices and security doors. In addition, we were required to coordinate the drawings between the prime architect and the security electronics consultant for the development of this high-rise detention center.





ROSA SCOTT ELEMENTARY SCHOOL

MADISON, MISSISSIPPI



CLIENT

Madison County Schools
Post Office Box 159
Flora, MS 39071
601.879.3000

PROJECT OVERVIEW

- Full architectural services
- Construction cost: \$8.3 Million
- 95,264 SF

PROJECT DESCRIPTION

Dale Partners provided services for the development of a feasibility study including planning, programming and design for renovations and additions for a new school for 800 students. The 9th grade facility houses a new gymnasium, media center, band hall and classrooms for special education, technology and biology. Our design staff considered major security issues including access to the corridors of the new facility.



DALE
PARTNERS

MISSISSIPPI STATE UNIVERSITY SCIENCE & TECHNOLOGY CENTER

STENNIS SPACE CENTER, MISSISSIPPI



CLIENT

MSU Research & Technology
Corporation
HPC Building
2 Research Boulevard
Mississippi State, MS 39762
662.325.8278

PROJECT OVERVIEW

- Full architectural and interior design services
- Construction cost: \$7.1 Million
- 57,000 SF
- LEED Silver certified

PROJECT DESCRIPTION

Dale Partners provided services for the new Science and Technology Center, a three-story research studies, education and outreach facility for Mississippi State University on the campus of the Stennis Space Center. The new steel-frame facility houses office space, conference rooms, classrooms and two high-capacity integrated data storage rooms to allow the Northern Gulf Institute (NGI) and the National Oceanic and Atmospheric Administration (NOAA) to increase their research capabilities. The building is hardened to resist coastal weather and storms and provides a secure location for a high performance research data center. LEED-Silver certification and unique storm-water management are critical to the project to enhance NGI and NOAA's pursuit to preserve our environment.



THE MILL AT MSU PARKING DECK

STARKVILLE, MISSISSIPPI



CLIENT

City of Starkville
101 East Lampkin Street
Starkville, MS 39759
662.323.4583

PROJECT OVERVIEW

- Master planning and full architectural services
- Construction cost: \$6.9 Million
- 147,278 SF
- Number of spaces: 458
- Cost/space: \$15,088.28
- Cost/SF: \$46.85
- Number of tiers: 3
- Bay width: 60'
- Space width: 9'-0"
- Floor to floor height: 11.5'

PROJECT DESCRIPTION

Dale Partners provided master planning and full architectural services for this new parking garage to accompany the newly renovated historic Mill at MSU. The 458-car, three-floor garage includes concrete foundations and retaining walls, pre-cast panel structure, restrooms, elevator, curtain wall system, TPO roofing system, electrical work and lighting, parking control, grading and landscaping. The Mill facility was converted into a mixed-use conference development including a new state-of-the-art 94,231SF conference center and office space, a four-story 110-room hotel and retail space.



DALE
PARTNERS

CITY CENTRE PARKING FACILITY

JACKSON, MISSISSIPPI



CLIENT

Hertz Investment Group
Formerly Parkway Properties,
Inc.

190 E. Capitol Street
Suite 675
Jackson, MS 39201
601.974.8138

PROJECT OVERVIEW

- Full architectural services
- Construction cost:
\$6.8 Million
- 163,467 SF
- Number of spaces: 517
- Cost/space: \$12,902
- Cost/SF: \$43.94
- Number of tiers:
4 supported, 1 on grade
- Bay width: 55'
- Space width: 8'-6"
- Floor to floor height: 10'
- Construction time:
7½ months

PROJECT DESCRIPTION

Dale Partners provided full architectural and engineering services for the design of a 517-car parking facility for Parkway Properties. The double helix layout provides automobile entrances from three streets. The exterior finishes include architectural pre-cast concrete enclosure with metal grillwork in the openings and glazed stair/elevator towers. The facility accommodates the building's customer parking, as well as provide parking for downtown Jackson's cultural amenities. There is also a covered pedestrian connection through a landscaped courtyard to the Centre City Building located west of the parking garage.



DALE
PARTNERS**ARTS DISTRICT PARKING GARAGE**

MERIDIAN, MISSISSIPPI



PROJECT DESCRIPTION

Dale Partners provided services including planning, design and construction for a new 451-car parking structure located in Historic downtown Meridian. The garage is the city of Meridian's participation in a \$26.5 Million downtown revitalization plan that involves public/private investments for the renovation of the Grand Opera House into the Riley Performing Arts Center and the Marks-Rothenberg Building into an educational/conference center for Mississippi State University. The facility is a poured-in-place concrete structure with 60' wide parking bays. The exterior of brick and precast concrete captures the historical architectural character of downtown Meridian with punched openings suggestive of windows and its proportion and exterior articulation recalling the existing commercial buildings in the area.



CLIENT

City of Meridian
Post Office Box 1430
Meridian, MS 39302
601.485.1819

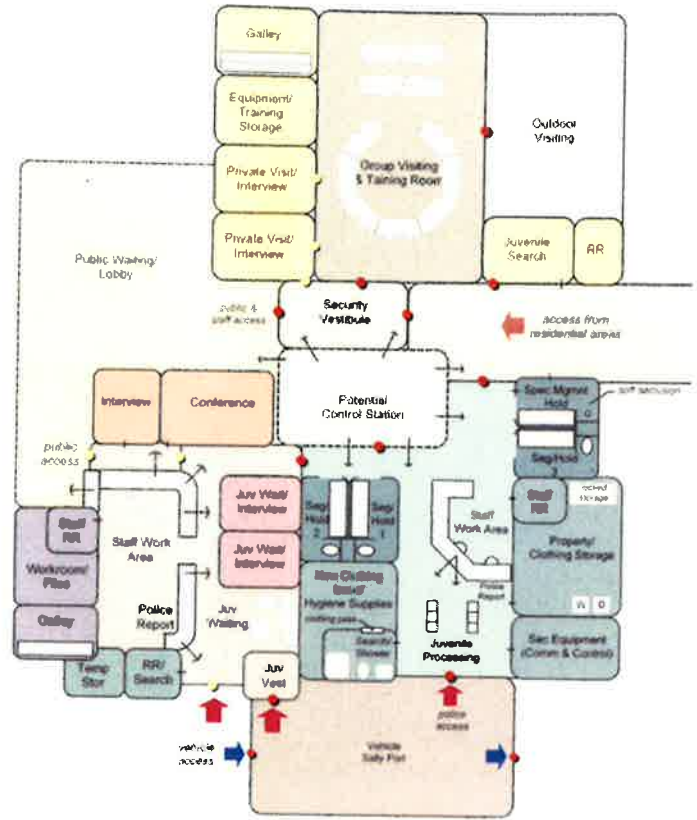
PROJECT OVERVIEW

- Full architectural services
- Construction cost:
\$5.3 Million
- 151,000 SF
Retail space, 7,000 SF
- Number of spaces: 451
- Cost/space: \$13,713
- Cost/SF: \$37.34
- Number of tiers: 6
- Bay width: 60'
- Space width: 9'-0"

NEW ORLEANS JUVENILE JUSTICE CENTER

The Juvenile Justice Center is designed as a single facility to house both the new Youth Study Center and New Orleans Parish Juvenile Court for the City of New Orleans, Louisiana. The new Youth Study Center is designed to accommodate forty (40) residents with the goal of rehabilitating instead of incarcerating residents to reduce recidivism and with the flexibility to house a changing population. The Orleans Parish Juvenile Court has instituted many Juvenile Detention Alternatives Initiatives (JDAI) programs working with the Annie E. Casey Foundation. The Juvenile Justice Center is a 122,000 square foot state-of-the-art juvenile care and juvenile court building housing six Juvenile Court Judges, Clerk of Courts Office, Judicial Administrative Services, as well as offices for the Orleans Public Defenders', Juvenile District Attorneys, Juvenile Regional Services, and a community out-reach center for pre and post-adjudication services.

The Youth Study Center shares the Juvenile Justice Conference Center with the new Juvenile Courts to provide training for staff and host seminars focused on juvenile justice. Food Service facilities provide secure dining for residents, while also supporting a public commissary for the Juvenile Courts Building. The Evening Reporting Center (ERC) Programs are located within the Juvenile Courts Building to provide after school services to the juveniles enrolled in the program. The entire facility is designed and built implementing sustainable design practices, materials, and methods of construction.



Detention Lobby & Control Diagram

● secure access control ● secondary access control



The New Orleans Youth Study Center is a one-story, eighty-two bed facility designed to accommodate a free-standing minimum security Shelter Component for transitional and community programs capable of housing twenty-two residents. The secure facility accommodates the Administration, Intake, Security Control, Social Services, Visitation, two Educational Components, a Medical Clinic, a Mental Health and Detoxification Component capable of housing twenty residents in a medium security setting, and two maximum security Detention Components each housing twenty residents. Support is provided by a full kitchen and cafeteria, secure loading dock and waste disposal, with two interior courtyards and a Gymnasium for recreational activities. The Shelter, Mental Health and Detoxification Component, as well as the two Detention Components are designed to allow for the greatest flexibility to accommodate a fluctuating population and resident gender ratio.

Location New Orleans, LA
 Budget \$47 Million
 Client City of New Orleans
 Architect and Landscape Mathes Brierre Architects, APC
 Civil Engineer Engineering & Consulting, Inc.

Structural Engineer Morphy Makofsky, Inc.
 Mechanical & Electrical Lucien T. Vivien, Jr. and Assoc., Inc.
 Kitchen Consultant Futch Design Associates, Inc.
 Juvenile Justice Consultant Mike McMillan
 Contractor The McDonnell Group

BAYOU ST. JOHN



Bioswales throughout the site supplement traditional drainage systems. The bioswales are planted with native vegetation that is both drought and flood tolerant which decreases the demand for upkeep and reduces water usage. Trees are planted throughout the site, including in the parking lots, to increase shade and reduce the heat island effect.





Project List

2018 Juvenile Rehabilitation Facility Renovations, Brookhaven, MS

Civil Sitework Design and Construction Administration

Owner: Lincoln County, MS

Construction Cost: \$100K (Sitework Only)

2012 Harrison County W13 Western Harrison County Regional Water Supply System

Owner: Harrison County Utility Authority

Construction Amount: \$1,300,000 each

2011 East Central Harrison County Wastewater Treatment Facility at River Hills (HARCUA CDBG S11), Gulfport, MS – Grass roots 0.5 mgd oxidation ditch treatment including mechanical bar screen, grit removal, clarification, chlorination/dechlorination, reaeration and aerobic digestion with belt filter press solids dewatering. The plant is designed to meet a high degree of ammonia nitrogen, BODS and TSS removal and limited nutrient removal. The plan includes both expansion of all processes and contemplated enhanced nutrient removal.

Owner: Harrison County Utility Authority

Construction Amount: \$8,276,128

2011 East Central Harrison County Wastewater Treatment Facility at Tradition (HARCUA CDBG S10), Gulfport, MS – Grass roots 2.0 mgd oxidation ditch treatment including mechanical bar screen, grit removal, clarification, chlorination/dechlorination, reaeration and aerobic digestion with belt filter press solids dewatering. The plant is designed to meet a high degree of ammonia nitrogen, BODS and TSS removal and limited nutrient removal. The plan includes both expansion of all processes and contemplated enhanced nutrient removal.

Owner: Harrison County Utility Authority

Construction Amount: \$12,406,295

2010 Mississippi Gulf Coast Coliseum & Convention Center Expansion, Biloxi, MS

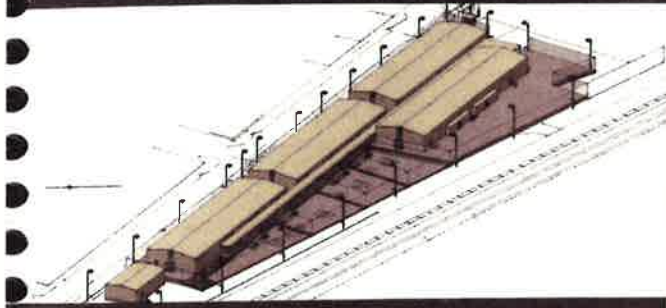
Structural Engineering Design and Construction Administration for 260,000 square foot addition to existing Coliseum. Steel barrel vaulted framing with precast concrete exterior shear walls. Curved steel framed roof over entrance concourses.

Owner: Harrison County, MS

Construction Cost: \$56M

2010 Expansion of West Harrison Wastewater Treatment at DeLisle (HARCUA CDBG S12A), Harrison County, MS – Project was expansion of existing 0.2 mgd oxidation ditch treatment to 0.4 mgd including mechanical bar screen, grit removal, UV disinfection, chlorination/dechlorination, reaeration and aerobic digestion. The plant is designed to meet a high degree of ammonia nitrogen, BODS and TSS removal and limited nutrient removal. The plan includes both expansion of all processes and

GSE EXPERIENCE



TEMPORARY INMATE HOUSING
ORLEANS PARISH, LA

GSE provided full engineering design for a 500 bed inmate housing facility built in New Orleans, LA which was funded by FEMA. The 40,000 square foot medium security facility consisted of 4 identical inmate buildings, a two story visitation and staff building, and outside recreational areas. Scope of work included project management for civil, and survey coordination along with structural, fire protection, electrical, and mechanical engineering design.

- Shallow Foundations
- Ventilation Systems
- Plumbing
- Low Voltage
- Lighting Controls
- Fire Alarm
- Bid Assistance
- Panel Boards
- Life Safety
- Transformers
- Construction Staking
- HVAC Systems
- Construction Inspections
- Lighting
- Cost Estimating



PORTABLE JAILS
PLAQUEMINES PARISH

GSE provided mechanical, electrical, and plumbing design for 6 portable jail facilities which converted portable shipping containers into 2 bedding units, cafeteria, laundry facility, and administrative buildings.

- Lighting Control
- Data/Telecom
- HVAC Systems
- Low Voltage
- Fire Alarm
- Plumbing



ADULT DETENTION CENTER
HARRISON COUNTY, MS

GSE evaluated life safety and HVAC processes while designing a custom touch screen control system for building automation and locking at the existing facility. GSE supervised the installation of the controls and commissioned the system. Additional services included electrical design for the perimeter fence lighting and security, as well as mechanical, electrical, plumbing, and structural design for the adjacent K-9 training facility.

- Building automation
- Low Voltage
- Controls System
- Shallow Foundations
- HVAC Systems
- Lighting



BLACKWATER RIVER
MILTON, FL

Florida Department of Corrections enlisted GSE as the Engineer of record for the fire suppression systems for the new Blackwater River Correctional Facility in Milton, FL. The facility has two open bay housing units and four cell housing units with a total maximum capacity of 2,000 inmates.



LITTLE ROCK AFB
LITTLE ROCK, AR

GSE provided sprinkler, fire alarm, mass notification, and passive fire protection (Egress Design) for a 30,000 square foot new construction of the Security Forces Operations Facility at Little Rock AFB.

- Design-Build
- Fire Alarm
- Mass Notification
- Sprinkler
- Passive Fire Protection
- Load Bearing Metal Stud

PROJECT EXPERIENCE AND REFERENCES

J. A. GARNER RUSSELL & ASSOCIATES, INC.

Summary

Client:

City of Biloxi

Contact:

**Christy
LeBatard
Director of
Engineering**

228-432-6265

Construction

Cost:

\$9.7 Million

Completion

2015

INFRASTRUCTURE REPAIR PROGRAM CITY OF BILOXI FEMA ASSISTED COB#KG635, EAGLE POINT AREA 1, PHASE 1

City of Biloxi retained engineering services of A. Garner Russell & Associates to perform engineering surveys and designs and prepare construction drawings and bid documents for a project consisting of the removal and replacement of water mains, sewer mains, storm drains and the rehabilitation of three sewage pump stations, along with appurtenances in Eagle Point Subdivision, Area 1, Phase 1, in the City of Biloxi. Scope of engineering services include design, preparation of bid documents, and construction administration. This project was completed in 2015 with an estimated construction cost of \$9.7 Million.

Construction

Cost:

\$9.1 Million

Completion

2015

INFRASTRUCTURE REPAIR PROGRAM CITY OF BILOXI FEMA ASSISTED COB#KG642, AREA 13 HOSPITAL 1 AND HOSPITAL 2

A. Garner Russell & Associates was retained by the City of Biloxi to perform engineering surveys and designs and prepare construction drawings and bid documents for a project consisting of the removal and replacement of water mains, sewer mains, force mains, storm drains and the rehabilitation of two sewage pump stations, along with appurtenances to serve an area along West Bayview Avenue and Kensington Drive, referred to as Area13—Hospital 1 and Hospital 2. This project was completed in 2015 with an estimated construction cost for the three phases of \$9.1 Million.

PROJECT EXPERIENCE AND REFERENCES

J. A. GARNER RUSSELL & ASSOCIATES, INC.

Summary

Client:

**Harrison
County Utility
Authority**

Contact:

**Donald Scharr
Executive Dir.**

228-868-8752

**Completion
2013**

**Construction
Cost:
\$500,000**

GULF REGION WATER AND WASTEWATER IMPROVEMENTS HARRISON COUNTY UTILITY AUTHORITY

W14b – Long Beach Southwest Water System Improvements

The Harrison County Utility Authority retained the services of AGR to provide complete engineering services for project W14b in Long Beach, MS, which was funded through the Gulf Region Disaster Recovery Community Development Grant program. This project consisted of the design and construction of approximately 0.5 miles of 12" water main, with connections to the City of Long Beach water system, all constructed in a right-of-way immediately south of the CSX railroad between White Harbor Rd. and S. Lang Ave. in Long Beach. The scope of engineering services included design, construction administration, and inspection, along with CSX permit acquisition and coordination with CSX during installation of a jack & bored casing under the CSX railway. The total construction cost for this project is approximately \$500,000 and was completed in 2013.

GULF REGION WATER AND WASTEWATER IMPROVEMENTS HARRISON COUNTY UTILITY AUTHORITY

S12d – Long Beach-Pass Christian Transmission System Improvements

**Completion
2016**

**Construction
Cost:
\$11 Million**

The Harrison County Utility Authority retained the services of AGR to provide complete engineering services for project S12d in Pass Christian and Long Beach, MS, funded through the Gulf Region Disaster Recovery Community Development Grant program. This project consisted of the construction of approximately 2.3 miles of gravity sewer main, approximately 7.7 miles of sewer force mains, 5 sewage pump stations, construction of a 12" sewer force main bored across Interstate 10, and a 26" jack & bored casing across the KCS railway at Beatline Road in Long Beach. The scope of engineering services included design, construction administration, and inspection, coordination with MDOT, acquisition of KCS permits and coordination with KCS throughout construction. The total construction cost of this project is approximately \$11.0 Million and was completed in 2016.

PROJECT EXPERIENCE AND REFERENCES

J. A. GARNER RUSSELL & ASSOCIATES, INC.

Summary

Client:
H.C.B.S.

Contact
Kent Jones
President
228-865-4001

Construction

Cost:
\$186,000

Completion
2013

DEBUYS ROAD MAINTENANCE OVERLAY HARRISON COUNTY BOARD OF SUPERVISORS CITY OF GULFPORT CITY OF BILOXI

As prime consultant, A. Garner Russell & Associates was retained by the Harrison County Board of Supervisors to render complete engineering services for the asphalt overlay of approximately 0.837 miles of roadway in Harrison County, Mississippi, known as Debuys Road from U.S. Highway



90 Service Drive across the railroad crossing to Pass Road. Construction included grade, drain, curb, gutter, sidewalk, paving, and striping. Scope of engineering services include design, opinion of probable costs, field surveys, topographic and utility mapping, rights-of-way, preparation of bid documents, construction administration, and inspection. This project began on November 4, 2014, and was completed in 2013, with a construction cost of \$186,000.

PROJECT EXPERIENCE AND REFERENCES

J. A. GARNER RUSSELL & ASSOCIATES, INC.

Summary

Client:
H.C.B.S.

Contact:
Kent Jones
President
228-865-4001

Construction
Cost:
\$905,000

Completion:
2013

IMPROVEMENTS TO COUNTY FARM ROAD AND LANDON ROAD HARRISON COUNTY BOARD OF SUPERVISORS STATE AID PROJECT NO. SAP-24(57)

The Harrison County Board of Supervisors retained .A. Garner Russell & Associates as prime consultant to perform engineering services for the asphalt overlay or the widening, curb and gutter, and overlay of

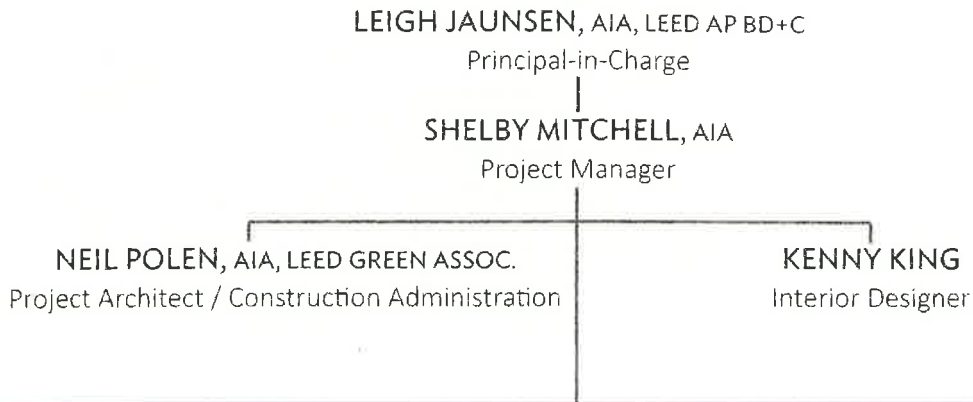


approximately 1.022 miles of County roadway in Harrison County, Mississippi, known as County Farm Road and Landon Road, also known as State Aid Project No. SAP-24(57). Scope of engineering services included design, preparation of bid documents, construction administration, and inspection. The contract time began on March 12, 2013, on this project and was completed in 2013 with a construction cost of \$905,000.



TAB 3
Capacity for Performance

DALE PARTNERS ARCHITECTS



MATHES BRIERRE ARCHITECTS

TODD C. JAMES
Executive Vice President and Principal

SCOTT EVANS, AIA
Principal

ANN SCHMUELLING, AIA, NCARB
Executive Vice President and Principal

SIMPKINS & COSTELLI

MICHAEL R. COSTELLI, P.E.
President - Senior Engineer; Principal

DAVID P. LEBLANC, P.E.
Construction Engineer and Administrator

GULF STATES ENGINEERING

JOHN T. WADE, P.E., F.P.E.
Principal Engineer

CHRIS DEARMON, P.E.
Mechanical Engineering Lead/Project Manager

A. GARNER RUSSELL & ASSOCIATES

M. SCOTT BURGE, P.E.
President

DOUGLAS K. RACKLEY, P.E.
Vice President

BURNS COOLEY DENNIS

G. THOMAS DUNLAP
Principal

M3 CONSULTING

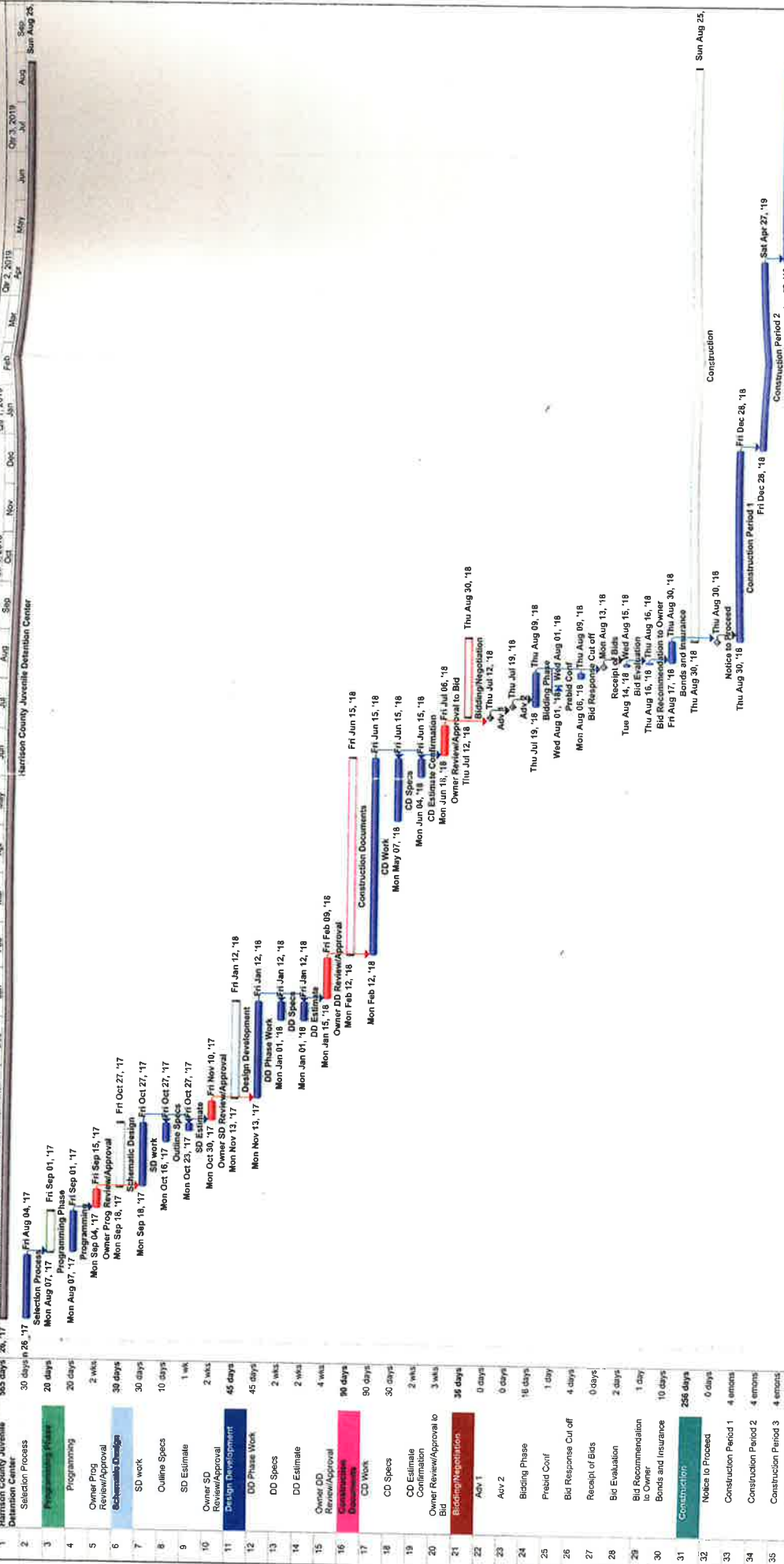
DANA W. MEIER, CCC
Lead Estimator

FUTCH DESIGN

GREG FUTCH, FCSI
President and Owner



Harrison County Juvenile Detention Center
Preliminary Project Schedule
2017-2019





WWW.DALEPARTNERS.COM

161 Lameuse Street, Suite 201
Biloxi, MS 39530

P: 228.374.1409
F: 228 374 1414



DALE
PARTNERS