

RECEIVED
JUN 27 2017
Richard R. Lott

MP MACHADO | PATANO
ENGINEERING + ARCHITECTURE
M|P DESIGN GROUP
JENNIFER SEYMOUR, AIA • BRADFORD JONES, AIA
ARCHITECTURE | ENGINEERING | PLANNING

1641 POPP'S FERRY ROAD, SUITE A-4 · BILOXI, MS 39532
(P) 228.388.1950 · (F) 228.388.1971 ■ WWW.MPENG.US

REQUEST FOR QUALIFICATIONS FOR: PROFESSIONAL-SERVICES TO DESIGN AND CONSTRUCT JUVENILE DETENTION CENTER IN HARRISON COUNTY, MISSISSIPPI

MACHADO | PATANO + GRACEHEBERT ARCHITECTS

Request for Qualifications for:



Professional Services to Design & Construct
a Juvenile Detention Center
in Harrison County, Mississippi





June 27, 2017

Harrison County Board of Supervisors
Chancery Clerks Office
Post Office Drawer CC
Gulfport, Mississippi 39502

Subject: Professional Services to Design & Construct a Juvenile Detention Center in Harrison County, Mississippi

To Whom It May Concern:

Machado | Patano+GraceHebert Architects, APAC has formed the best team to deliver Harrison County a successful project. By working with us, you will add a partner to your team who understands the local market and the unique concerns with juvenile justice design. We will bring a fresh outlook to design - no pat answers, no cookie-cutter solutions.

Why select our team?

- **Our team is #1.** We bring Harrison County local experience with regional expertise. Machado | Patano (MP) is a local, multi-discipline planning, architecture, and engineering firm headquartered in Biloxi, Mississippi. GraceHebert has the knowledge and expertise in justice design market to successfully complete the project. We have designed and completed facilities that have encompassed every facet of the daily operations of Law Enforcement. Our team (MP+GraceHebert) will work seamlessly together across all disciplines to give Harrison County the benefit of multi-service integration with an approach that is as innovative as it is practical. Together, we have a team of almost 50 people. We have the manpower and resources necessary to get the job done.
- **We have an impressive portfolio.** Take a tour of the following pages. You will see forward thinking and fiscally responsible design projects that improve our Clients operations and ensure the safety of the offender. GraceHebert's design experience has been recognized by the state of Louisiana and we have maintained an indefinite delivery contract with the Louisiana Department of Corrections since 1990. We have created over 9,000 cell and 15,000 dormitory beds for all types of facilities; minimum and maximum security, for men, women, juvenile, mental health and work release. We understand that there are unique aspects to every client and every project. We tap into our depth of expertise to balance those distinct characteristics with project parameters.
- **We have a team of experts in designing juvenile justice centers.** We have an in-depth understanding of the need to create campus environments that provide comfortable and safe space for troubled youth. GraceHebert's design team includes firm President, Gerald D. "Jerry" Hebert, II, AIA, NCARB, LEED AP and firm Secretary/Treasurer, Adam L. Fishbein, AIA, NCARB. Jerry is a key player in the justice industry. Jerry is a Commissioner for the ACA Commission on Accreditations for Corrections Standard Committee, Past-Chairperson of ACA Facility Design Committee & member of ACA Green Build Committee. Adam, a notable justice architect, has designed correctional facilities across the country. Jerry and Adam have led GraceHebert in designing 5 juvenile justice centers across Louisiana within the last 5 years.
- **We are committed to making your project a success.** We live here. We work here. We will be here when the project is complete. We build relationships. The majority of our team's work comes from the repeat business of our many satisfied, long-term clients. Machado | Patano+GraceHebert takes great pride in our relationships with our clients and work extremely well in a collaborative environment.

During the period of this proposal the contact person is:

David Machado, PE
Principal, Machado Patano
p: 228.388.1950 // e: dmachado@mpeng.us

By execution of this letter, our entire team commits our availability and full resources necessary to assure that this project is a success. Should you have any questions, please contact us at your earliest convenience. We look forward to your favorable consideration.

Sincerely,

David Machado, PE
Principal, Machado Patano, PLLC

MACHADO PATANO, PLLC
1641 POPPS FERRY ROAD, SUITE A4
BILOXI, MISSISSIPPI 39532

GRACEHEBERT ARCHITECTS, APAC
650 POYDRAS STREET, SUITE 1110
NEW ORLEANS, LOUISIANA 70130



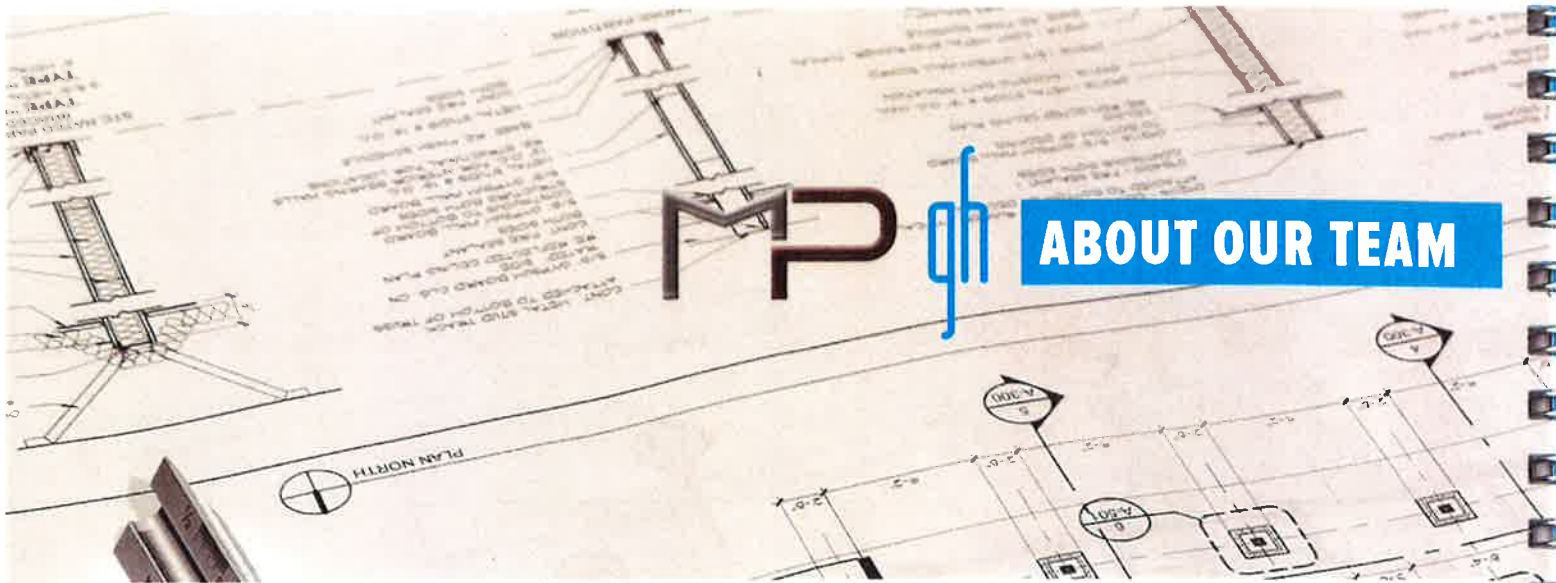
TABLE OF CONTENTS

// ABOUT US	I
// QUALIFICATIONS	II
// EXPERIENCE	III
// CAPACITY FOR PERFORMANCE	IV



ABOUT US

GRACEHEBERT'S UNIQUE COLLABORATIVE
PROCESS AND UNSURPASSED PROJECT
MANAGEMENT DELIVER EXEMPLARY
PROJECTS THAT CONSISTENTLY MEET CLIENT
NEEDS AND EXCEED THEIR EXPECTATIONS.



Machado Patano+GraceHebert Architects brings national expertise with local experience.

Machado Patano is the best, local engineering leader. MP believes our multi-discipline professional services, past work experience, quality of work, ability to meet schedules, qualifies MP for any job with the Harrison County Board of Supervisors.

MP brought on the #1 regional juvenile justice designers to the team- GraceHebert Architects. With the inclusion of GraceHebert, we have formed the best team to bring a successful project to Harrison County.

GraceHebert is a key player in the Justice design industry. Currently, GraceHebert is bidding the Calcasieu Parish Juvenile Justice Center in Lake Charles, Louisiana. Our firm has local knowledge of the area since we started working in the county after Hurricane Katrina.

OUR TEAMS SERVICES //

MP specializes in all disciplines required to design & construct the modern facility, those include:

- Architecture
- Civil Engineering
- Structural Engineering
- MEP Engineering
- Land Surveying and Construction Layout

As a complete design studio, GraceHebert offers all of the services necessary to fulfill your vision which includes:

- Architecture
- Master Planning
- Interior Design
- Programming

Our team has worked very hard to put adequate professional personnel and QA/QC measures in place to provide efficient designs, accurate estimates and detailed construction documents for all our customers with competitive bids, easy construction flow, and most importantly, limit change orders as much as possible.



ABOUT MACHADO PATANO

MP is the only Full Service Engineering Firm in South Mississippi. As a Multi-discipline firm, we implement state of the art design & construction projects for all sectors in the following industries:

- Federal/ Municipal
- Industrial/ Marine
- Education
- Transportation
- Medical
- Commercial Retail
- Entertainment/Gaming

Since 2007, MP has completed a diversity of projects-ranging from small consulting to multi million dollar construction projects. Headquarter in Biloxi, Mississippi MP is extensively involved in numerous projects throughout the State of Mississippi and expands its reach to more then 28 states throughout the United States.

We are South Mississippi's Leader in Facility Projects, as evidenced by the work that is being done with Huntington Ingalls Shipyard, City of D'Iberville, Biloxi Public Schools, Jackson County School Districts, & Pascagoula Gautier School Districts.

We are highly focused and think out-of-the-box. We are efficient, responsive, deliver quickly, and consistently manage tight schedules and strict construction budgets.

ABOUT GRACEHEBERT

Since 1967, **GraceHebert** has consistently been able to connect with our client's vision and bring it to life.

While we are unrestrained by a signature look, we do have a signature way of doing business that delivers the best solution possible, every step of the way. As a result, our portfolio showcases a broad spectrum of design solutions that have led to documented client satisfaction and repeat business.

Over the years, we've discovered that great service never gets old. A key component of GraceHebert's service is providing our clients with clear, understandable, and up-to-date information as their projects progress.

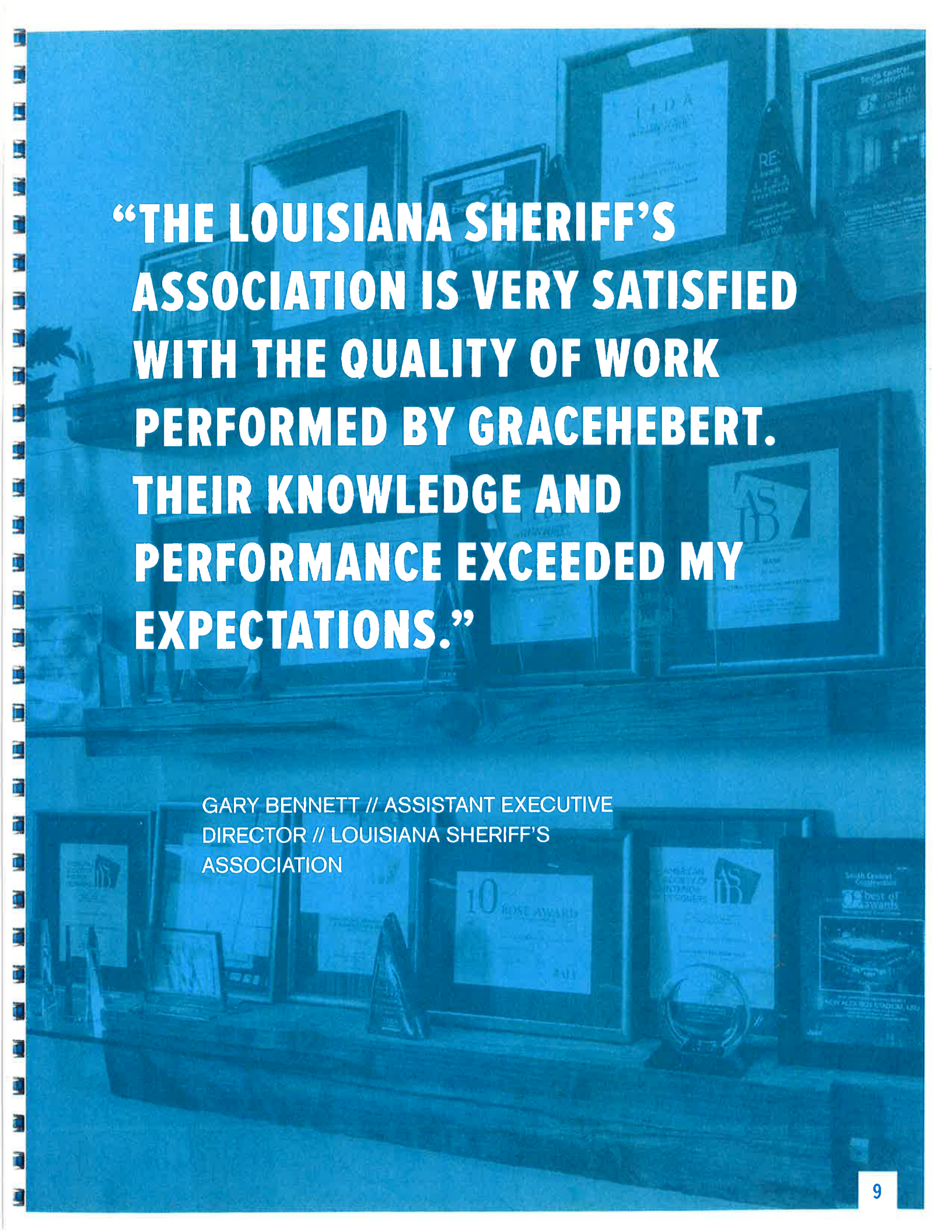


Our innovative use of Building Information Modeling (BIM) software to create state-of-the-art 3-D models allows our clients to actually see and experience their projects before the first shovel hits the ground. Owners and other stakeholders benefit from GraceHebert's ability to spot potential conflicts before construction and minimize project delays and cost overruns.

GraceHebert's commitment to our clients and to transparency throughout the design process led us to invest in the creation of Project Trek: our project management software. Project Trek allows GraceHebert and our clients to collaborate in real time and provides unparalleled accountability for all parties involved.

As our clients will attest, we're all about exploring the possibilities and potential of their vision.





**“THE LOUISIANA SHERIFF’S
ASSOCIATION IS VERY SATISFIED
WITH THE QUALITY OF WORK
PERFORMED BY GRACEHEBERT.
THEIR KNOWLEDGE AND
PERFORMANCE EXCEEDED MY
EXPECTATIONS.”**

GARY BENNETT // ASSISTANT EXECUTIVE
DIRECTOR // LOUISIANA SHERIFF’S
ASSOCIATION

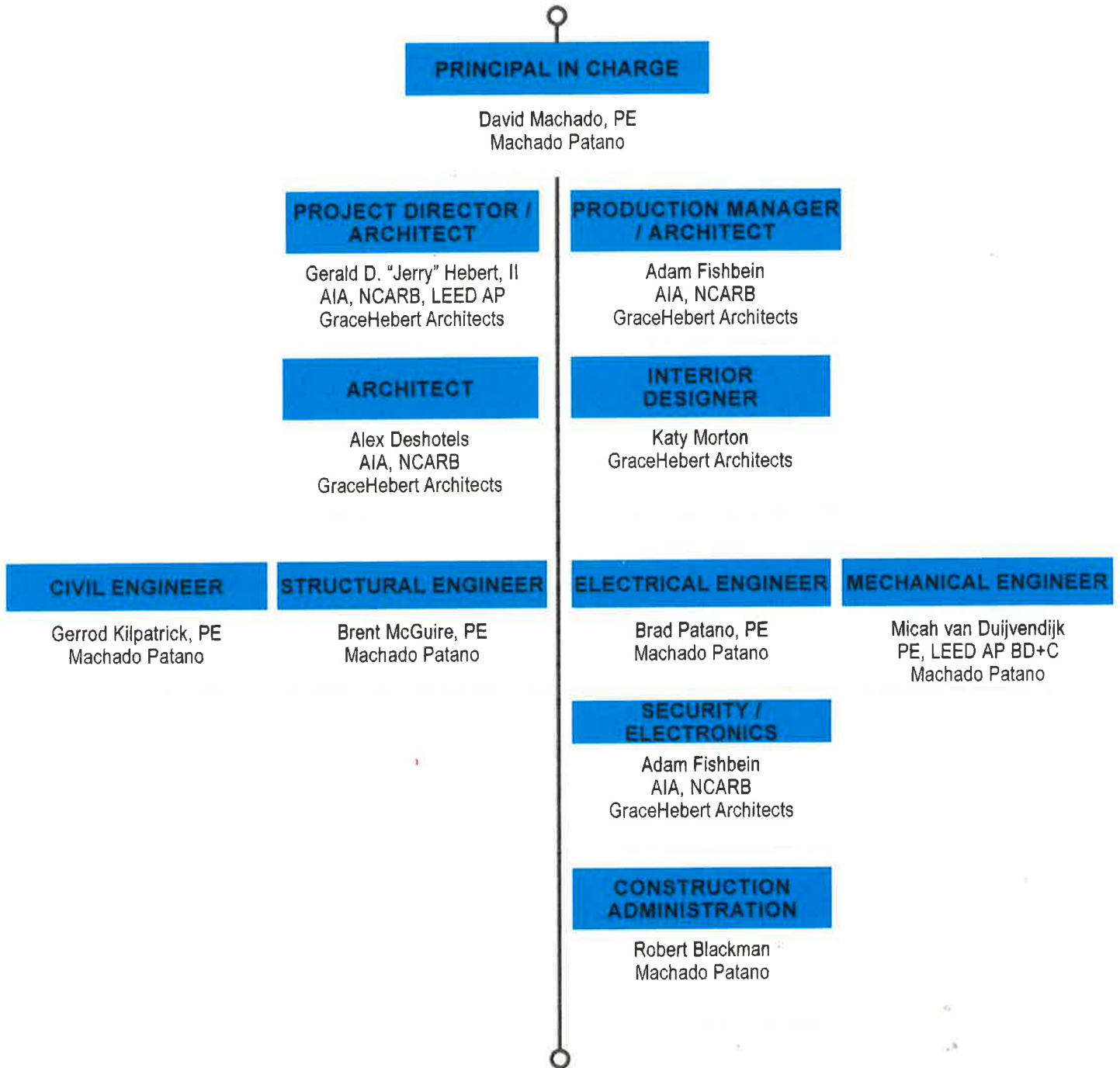


QUALIFICATIONS

COLLABORATION AND
COMMUNICATION ARE CENTRAL TO
OUR PROCESS AND FORM THE BASIS
OF ALL CLIENT INTERACTIONS.

TEAM ORGANIZATIONAL CHART

Integrated Design Team





David Machado

PE

David is the Principal and Founder of Machado | Patano, PLLC and MP Design Group, PLLC located in Biloxi, MS and is responsible for the design, delivery, scheduling and coordination of all industrial facilities projects performed by the companies. David has more than 16 years of experience in engineering, surveying and construction projects and has acted in numerous roles including Project Engineer, Project Manager, Field Engineer, and Principal Engineer. He prides himself in performing out of the box thinking in design approach and problem solving when demanding projects need it most.

RÉSUMÉS

Firm //

Machado | Patano

Role //

Principal In Charge

Education //

M.B.A Finance,
Tulane University

B.S. Civil Engineering
MS State University

Professional Registration //

Registered Engineer in MS

Relevant Project Experience //

Biloxi Public Works Facility;

City of Biloxi
Project Value \$ 9M | 60K sf

Fire Station #1, City of D'Iberville

Project Value \$ 2.5M|14K sf

D'Iberville Sportsplex,

City of D'Iberville
Project Value: \$6.6M

Biloxi Infrastructure Program(FEMA),

City of Biloxi
Project Value: \$375M|
•GravityNorth4-ProjectValue:\$7.5M
•GravityNorthPhase5-ProjectValue:\$14M
•RodenbergPhase2-ProjectValue:3.5M
•Buena Vista East Utility Corridor-Project Value:\$19M

VAMC- Project Acorn, Biloxi, MS

Project Value: \$350M
• Phase I & Phase II Utilities | \$40M
• Extended Care Facility | \$20M
• Clinical Addition | \$54M

Biloxi Board Walk, Biloxi, MS

Value: \$11M

Gulfport Harbor Fuel Dock,

Gulfport, MS
Value: \$800K

Ocean Spring Harbor Road, City of

Ocean Springs, MS
Value: 750K

Biloxi Public Schools

- Biloxi Performing Arts Facility
- Biloxi Jr. High Athletic Facility
- Biloxi Jr. High School- Project Value: \$36M | 195K sf
- Biloxi Weight Room- Project Value: \$900K | 10,000 sf
- Jeff Davis Improvements- Project Value \$1.3M | 2,700 sf

Scarlet Pearl Casino & Hotel,

D'Iberville, MS
Project Value: \$390M



Gerald "Jerry" Hebert, II

AIA, NCARB, LEED AP

Over the last 25+ years hundreds of projects have crossed Jerry's desk, each receiving the same high level of attention to detail and collaboration to fully realize each client's vision. Jerry has carefully maintained the growth of the company during that time to accommodate its ever-increasing client list, while ensuring that they consistently turn out quality results from project to project. A key player in the industry, Jerry also sits on a number of local, regional and state boards and committees. Jerry is a member of the American Correctional Association (ACA), ACA Commissioner on Accreditations for Corrections, Chairperson of ACA Facility Design Committee & member of ACA Green Build Committee. He has been actively engaged with ACA since the 1980s.

RÉSUMÉS

Firm //

GraceHebert Architects,
APAC

Role //

Project Director
Architect

Education //

B. Architecture, Louisiana
State University, 1985

Professional Registration //

Registered Architect in Louisiana, Georgia, Mississippi, Arkansas, Alabama, Arizona, Texas (#17205), Florida, Nevada, Virginia

American Institute of Architects (AIA)

National Council of Architectural Registration Board (NCARB)

Leadership in Energy and Environmental Design Accredited Professional (LEED AP)

Asbestos Abatement Designer

Member of American Correctional Association (ACA)

Relevant Project Experience //

Orleans Parish Sheriff's Office;

New Orleans, LA

Phase I: 134,000 sq. ft., new warehouse/
kitchen/central plant facility (consulting
architect)

Phase II: sheriff's administrative office,
intake processing center, medical, and
1500 bed housing facility (joint venture)

Lafourche Parish Correctional

Center; Thibodaux, LA

600 bed facility

Construction Manager at Risk Delivery
Method

Bossier Parish Maximum Security

Jail; Plain Dealing, LA

432 cell beds

State of Louisiana Juvenile Justice

Master Plan; various sites, LA

master plan for juvenile justice reform
based on the Missouri Model

Elayn Hunt Correctional Center;

St. Gabriel, LA

new skilled nursing facility, JV.

Swanson Center for Youth; Tullulah,

LA

new youth detention center for the State
of Louisiana (in design- on hold awaiting
funding)

Jetson Center for Youth; Baton

Rouge, LA

new youth detention center for the State
of Louisiana (in design- on hold awaiting
funding)

Livingston Parish; Livingston, LA

Sheriff's Office Detention Center - 72
cell beds, 509 dormitory beds

911 Communications Center

Sheriff's Work-Release Dormitory

Sheriff's Firing Range -*

Parish Courthouse

GEO Immigrations & Customs

Enforcement (ICE) Transportation

Facility; Alexandria, LA

400 bed transportation facility to house

ICE inmates

Design Build Delivery Method



Adam L. Fishbein

AIA, NCARB

Adam is the embodiment of our collaborative culture, serving as a mentor to many on our staff while managing multiple projects at any given time. Primarily focused on justice design, he is the go-to guy for clients, ensuring successful completion.

Professional Registration //

Registered Architect in Louisiana, Texas (#17575), Florida, Alabama, Nevada, Mississippi, New Mexico, Arizona

American Institute of Architects (AIA)

National Council of Architectural Registration Board (NCARB)

RÉSUMÉS

Firm //

GraceHebert Architects,
APAC

Role //

Production Manager
Architect

Education //

B.A. of Economics, Tulane
University, 1990
Master of Architecture I,
Tulane University, 1993

Relevant Project Experience //

Calcasieu Parish Juvenile Detention Center; Lake Charles, LA
38 bed new campus

Terrebonne Parish New Juvenile Detention Center; Houma, LA
32 bed new campus

Lafourche Parish Correctional Center; Thibodaux, LA
600 bed facility
Construction Manager at Risk Delivery Method

Lafayette Parish Sheriff's Office Public Safety Complex; Lafayette LA
300 person work release center
200 person outside worker dorm
video visitation and training building

Orleans Parish Sheriff's Office; New Orleans, LA
Phase I: 134,000 sq. ft., new warehouse/kitchen/central plant facility (consulting architect)
Phase II: sheriff's administrative office, intake processing center, medical, and 1500 bed housing facility (joint venture)

Prarieville Detention Center; Alvarado, TX

961 dormitory beds for ICE inmates
Florida Parishes Juvenile Detention Center Renovations & Additions; Robert, LA

Livingston Parish; Livingston, LA
Sheriff's Office Detention Center - 72 cell beds, 509 dormitory beds
911 Communications Center
Sheriff's Work-Release Dormitory
Sheriff's Firing Range
Parish Courthouse

San Luis Detention Center Expansion; San Luis, AZ
correctional facility expansion
Design Build Delivery Method

Shreveport City Jail; Shreveport, LA
60 cell beds, 170 dormitory beds

Chicot Country Detention Center; Chicot County, AR
540 dormitory beds, 34 cell beds

Ascension Parish Jail Expansion; Donaldsonville, LA
300 dorm beds

Bossier Parish Maximum Security Jail; Plain Dealing, LA
432 cell beds



Alex Deshotels

AIA, NCARB

Since joining GraceHebert Architects in 2009, Alex has been a dedicated contributor to some of the firm's largest correctional projects. He is currently managing and designing projects of various scopes and scales across Louisiana. Alex has worked on various project types from correctional facilities to commercial office buildings. Alex is a member of the Baton Rouge Rotary Club and is a member of the American Correctional Association (ACA).

Professional Registration //

Registered Architect in Louisiana
American Institute of Architects (AIA)
National Council of Architectural Registration Board (NCARB)

RÉSUMÉS

Firm //

GraceHebert Architects,
APAC

Role //

Architect

Education //

B. Architecture I, University of
Louisiana Lafayette, 2006

Relevant Project Experience //

Calcasieu Parish Juvenile Detention Center; Lake Charles, LA
38 bed new campus

Prarieville Detention Center;
Alvarado, TX
961 dormitory beds for ICE inmates

San Luis Detention Center Expansion; San Luis, AZ
correctional facility expansion
Design Build Delivery Method

Lafayette Parish Sheriff's Office Public Safety Complex; Scott, LA
300 person work release center, 200 person outside worker dorm, video visitation and training building

Terrebonne Parish Juvenile Detention Center; Houma, LA
32 bed new campus

GEO Immigrations & Customs Enforcement (ICE) Transportation Facility; Alexandria, LA
400 bed transportation facility to house ICE inmates at the England Airforce Base
Design Build Delivery Method

Orleans Parish Sheriff's Office; New Orleans, LA
Phase I: 134,000 sq. ft., new warehouse/kitchen/central plant facility (consulting architect)
Phase II: sheriff's administrative office, intake processing center, medical, and 1500 bed housing facility (joint venture)



Katy Robinson

Katy started her career at GraceHebert Architects as an Administrative Assistant where she gained knowledge of the firm's culture and assisted on various phases of design. In 2013 she was promoted to Intern Interior Designer. She has gained vital experience working on various projects, coordinating with different disciplines, and team members. This has allowed her to gain further understanding of clients' needs and use her artists background as a contributing factor to the design process. Katy is currently working towards her professional license.

Relevant Project Experience //

RÉSUMÉS

Firm //

GraceHebert Architects,
APAC

Role //

Interior Designer

Education //

B.A. of Interior Design, B.A.
of Fine Arts and Minor in
Art History, Louisiana State
University, 2011

**Department of Corrections Prison
Enterprises & Credit Union;**
Baton Rouge, LA
renovations

**St. Jude the Apostle Catholic
Church;**
Baton Rouge, LA
new ministry building for administration

Alliance Safety Council; Gonzales, LA
Interior design and furniture package

St. George Catholic Church;
Baton Rouge, LA
new Church to seat 1,200 parishioners

**Lafourche Parish Correctional
Center;** Thibodaux, LA
600 bed facility
Construction Manager at Risk Delivery
Method

**St. Michael the Archangel High
School Multipurpose Building;**
Baton Rouge, LA

**Louisiana Community Technical
College System**
River Parishes Community College;
Gonzales, LA
Sidney Collier Technical College;



Gerrod Kilpatrick

PE

Mr. Kilpatrick has over 16 years of experience in civil engineering, project management, and environmental engineering. Mr. Kilpatrick has been involved in several construction projects throughout Mississippi, Louisiana, and Alabama ranging from long range master planning, roadway and bridge design, infrastructure utility design, subdivision design, to marine and port design. Mr. Kilpatrick currently serves as a project engineer at Machado | Patano PLLC in Biloxi, MS where he is responsible for the design, delivery, project management, and construction management for all Civil & Structural Construction projects.

RÉSUMÉS

Firm //

Machado | Patano

Role //

Civil Engineer

Education //

M.S. Civil Engineering
MS State University

B.S. Civil Engineering
MS State University

Professional Registration //

Registered Engineer in MS, AL, LA, TN, AR, MO, OH, IL, NJ, JY, KS, TX, NH, NC, VA, IN, NC, VA, IN, MN, WI, MI, CO, WV, FL

Relevant Project Experience //

Biloxi Public Works Facility;

City of Biloxi
Project Value \$ 9M | 60K sf

Biloxi Housing Authority, Biloxi, MS

Project Value \$36M

North Harrison County Industrial Park, Harrison County

Project Value: \$10M

Harrison County Utility Authority (FEMA), Harrison County

Project Value: \$240M

Fire Station #1, City of D'Iberville

Project Value \$ 2.5M|14K sf

D'Iberville Sportsplex,

City of D'Iberville
Project Value: \$6.6M

Biloxi Public Schools

- Biloxi Performing Arts Facility
- Biloxi Jr. High Athletic Facility
- Biloxi Jr. High School- Project Value: \$36M | 195K sf
- Biloxi Weight Room- Project Value: \$900K | 10,000 sf
- Jeff Davis Improvements- Project Value \$1.3M | 2,700 sf

Scarlet Pearl Casino & Hotel,

D'Iberville MS
Project Value: \$390M

Jackson County FEMA Shelters, (FEMA), Vancleave, MS

Project Value: \$10M



Brent McGuire

PE

Brent has over 13 years of experience in structural engineering performing supervision, detailed design, research and project development. He has produced detailed designs for various military and civil works project including: wood framed structures, wood truss design, stability analysis for mass concrete structures, large span steel truss design, steel frame structures, hydraulic steel structures soil retaining structures and load bearing masonry block buildings.

Professional Registration //

Registered Engineer in MS, AL
Certified Welding Inspector

RÉSUMÉS

Firm //

Machado | Patano

Role //

Structural Engineer

Education //

B.S. Civil Engineering
University of South AL

Relevant Project Experience //

Huntington Ingalls, Pascagoula, MS

- Area 400 Bay 1 Rolling Covers
Project Value: 20M | 111K sf
- Bay 4 Rolling Covers
Project Value: \$17M | 65K sf
- Bay 5 Rolling Covers
Project Value: \$17M | 65K sf
- Track 6 Rolling Covers
Project Value: \$20M | 63Ksf
- NDT Lab
Project Value: \$1.1M | 3.6K sf
- Area 800 Rolling Covers
Project Value: 18M | 55K sf
- East Bank Pier 4 Upgrade
Project Value: \$3.5M | 40K sf
- Lumber Yard Relocations
Project Value: \$1.5M | 10 Acres
- Blast Tent Relocation
Project Value: \$5M

D'Iberville Sportsplex, City of

D'Iberville
Project Value: \$6.6M

Biloxi Public Schools

- Biloxi Performing Arts Facility
- Biloxi Jr. High Athletic Facility
- Biloxi Jr. High School- Project Value:
\$36M | 195K sf



Brad Patano

PE

Brad has over 16 years construction and design experience in a multitude of areas including; educational, industrial, federal, healthcare,, roadway lighting & marinas. His has years of hands on experience in field management and safety training. Brad has worked with private and public customers to develop construction projects, project estimates, and conducted local and state plan reviews for permitting. Brad is the Principal Engineer at Machado | Patano, PLLC and is responsible for the design, delivery, scheduling and coordination of all electrical and architectural projects.

Professional Registration //

Registered Engineer in MS, LA, AL, TN, TX, FL, AR, OK

RÉSUMÉS

Firm //

Machado | Patano

Role //

Electrical Engineer

Education //

B.S. Electrical Engineering,
Mississippi State University

Relevant Project Experience //

Biloxi Public Works Facility;

City of Biloxi

Project Value \$ 9M | 60K sf

Fire Station #1, City of D'Iberville

Project Value \$ 2.5M|14K sf

Fire Station, City of Moss Point

Project Value \$5M| 15K sf

Fire Station, City of Long Beach

Project Value \$3M| 10.5K sf

Jackson County FEMA Shelters, Vance, MS

Project Value: \$10M

MS Highway Patrol Drivers License Station (MDOT); Gautier, MS

Project Value: \$398K

| 250K sf

VAMC- Project Acorn, Biloxi, MS

Project Value: \$350M

▪ Phase I & Phase II Utilities | \$40M

▪ Extended Care Facility | \$20M

▪ Clinical Addition | \$54M

Biloxi Public Schools

▪ Biloxi Performing Arts Facility

▪ Biloxi Jr. High Athletic Facility

▪ Biloxi Jr. High School- Project Value:

\$36M | 195K sf

▪ Biloxi Weight Room- Project Value:

\$900K | 10,000 sf

▪ Jeff Davis Improvements- Project Value
\$1.3M | 2,700 sf

Jackson County Schools

▪ St. Martin School District Renovations

▪ St. Martin New Gymnasium

▪ Project Management Services-

Vance, Upper Elementary, East

Central Middle, St. Martin Middle

Classroom Additions- Project

Value: \$9.9M | Varies

MGCCC

▪ Network Infrastructure Cooling & Power
Supplies; Project Value: \$500K

▪ Field House Lighting Perk Campus-

Project Value: \$2.1M|11k sf

Gautier Public Schools

▪ Gautier High Lighting Improvements-
Project Value: \$2.7M| 15K

▪ Gautier High Addition- Project Value:
\$4M | Size 15.5K sf

▪ Gautier Middle School Renovation-

Project Value: \$2M | 25K sf

Pascagoula Public School

▪ Pascagoula Athletic Lighting- Project
Value: \$750K

▪ Colmar Middle School Renovation-

Project Value- Project Value: 2M | 23K sf



Micah van Duijvendijk

PE, LEED AP BD+C

Micah has more than 23 years of engineering experience in a multitude of areas including: industrial, federal, healthcare, commercial, educational, recreational & retail. He has hands on field experience in construction administration and management. Micah has worked with private and public clients, architects, developers and other engineers to develop construction projects, designs, and budgets. He is the Senior Mechanical Engineer at Machado | Patano, PLLC, and is responsible for the design, delivery, scheduling and coordination on all mechanical projects the company performs for its clients.

RÉSUMÉS

Firm //

Machado | Patano

Role //

Mechanical Engineer

Education //

B.S. Mechanical Engineering,
Oral Roberts University

Professional Registration //

Registered Engineer in MS, AL, LA, FL, GA, TX, SC, CO, CA, IL; TN, OK
Leadership in Energy and Environmental Design Accredited Professional (LEED AP)

Relevant Project Experience //

Biloxi Public Works Facility , City of Biloxi
Project Value: 7.1M

MS Highway Patrol Drivers License Station, Jackson County, MS \$398K | 250K sf

Fire Station #1, City of D'Iberville
Project Value \$ 2.5M|14K sf

D'Iberville Sportsplex, City of D'Iberville
Project Value: \$6.6M

Jackson County FEMA Shelters, Vancleave, MS
Project Value: \$10M

Keesler AFB, PAE Transpiration Building

Biloxi Public Schools

- Biloxi Performing Arts Facility
- Biloxi Jr. High Athletic Facility
- Biloxi Jr. High School- Project Value: \$36M | 195K sf
- Biloxi Weight Room- Project Value: \$900K | 10,000 sf
- Jeff Davis Improvements- Project Value \$1.3M | 2,700 sf

Jackson County Schools

- Vancleave Fab Lab
- St. Martin School District Renovations
- Project Management Services- Vancleave, Upper Elementary, East Central Middle, St. Martin Middle Classroom Additions- Project Value: \$9.9M | Varies

Gautier Public Schools

- Gautier High Addition- Project Value: 4M | 15.5K sf
- Gautier Middle Renovations- Project Value: \$2M | 25K sf



Robert Blackman

Mr. Blackman has over 26 years experience in Construction Administration in Federal, Municipal, Education, Industrial & Commercial projects. Mr. Blackman is the Construction Project Inspector and is responsible for ensuring all materials are delivered to the work site as well as communicating & coordinating daily with the Architects, Engineers & Contractors.

Relevant Project Experience //

Biloxi Public Schools

- Biloxi Performing Arts Facility
- Biloxi Jr. High Athletic Facility
- Biloxi Jr. High School- Project Value: \$36M | 195K sf

City of Ocean Springs

- New Police Station & Fire Station
- Old Police Station Renovations
- Public Works Building Repairs
- City Hall & Public Library Repairs

D'Iberville Sportsplex,

City of D'Iberville
Project Value: \$6.6M

Huntington Ingalls

- 400 Bay 1 Rolling Covers-Project Value: 20M |111K sf
- 800 Rolling Covers- Project Value: \$18M | 55K sf
- NDT Lab- Project Value: \$2.5M | 3.6K sf
- Track 6 Rolling Covers- Project Value \$20M | 63K sf
- Central Compressor Station- Project Value \$ 5.5M

City of Pascagoula

- Jackson County Adult Detention Center New Day Room & Cell Addition
- Pascagoula Police Department Katrina Repairs & Renovations
- Pascagoula High School Gym Renovations
- Pascagoula New Police Training Facility & Firing Range
- Transfer Station Repairs

RÉSUMÉS

Firm //

Machado | Patano

Role //

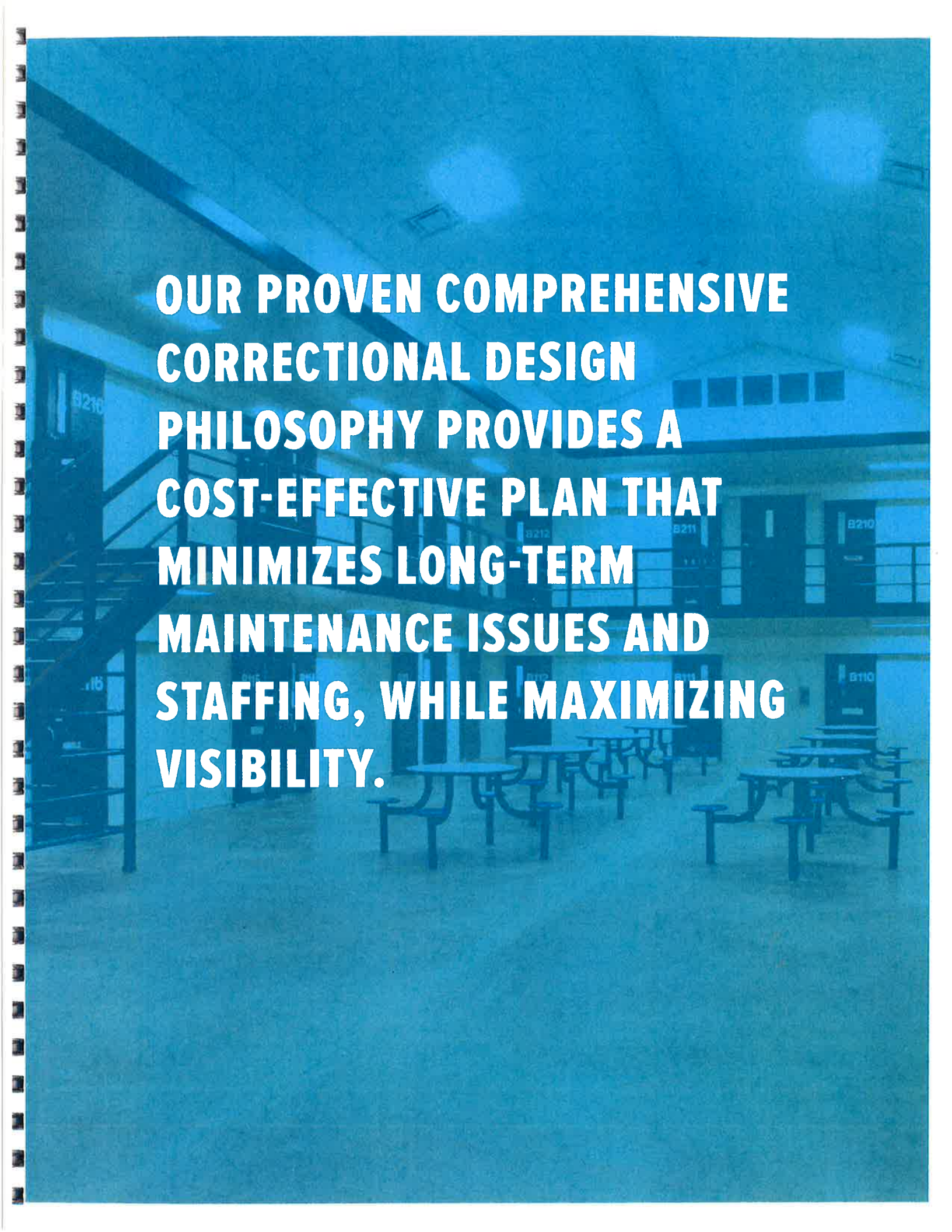
Construction Administration

Education //

A.D. Construction
Engineering
Technology

University of Southern MS





**OUR PROVEN COMPREHENSIVE
CORRECTIONAL DESIGN
PHILOSOPHY PROVIDES A
COST-EFFECTIVE PLAN THAT
MINIMIZES LONG-TERM
MAINTENANCE ISSUES AND
STAFFING, WHILE MAXIMIZING
VISIBILITY.**



EXPERIENCE

GRACEHEBERT DELIVERS TOP-TIER
PROJECTS FOR GREAT CLIENTS
INCLUDING CORPORATIONS,
EDUCATIONAL INSTITUTIONS, AND
GOVERNMENT ENTITIES.



OUR APPROACH

Our team has extensive experience working in the therapeutic model of juvenile justice design. A current and recent example is the Calcasieu Parish Juvenile Detention Center and the Terrebonne Parish Juvenile Center. GraceHebert was tasked with creating and developing a new campus that created a softer, nurturing environment. There is a distinctive balance between security and the provision of a more normative environment for youth in residence.

Our in-depth understanding of the need to create campus environments that provide comfortable and safe space for troubled youth, makes GraceHebert uniquely qualified to design this project.

GraceHebert is well versed in the requirements for inmate housing for compliance with the American Correctional Association (ACA), Immigration & Customs Enforcement (I.C.E.), Federal Bureau of Prison (FBOP), and Prison Rape Elimination Act (PREA).

The most important design consideration in any detention facility is the safety of both the juvenile and the employees.

Through a carefully planned design, we can implement strategies to ensure direct clear lines of visibility while using technology as a supplement, not a primary consideration. We design all of our facilities in three dimensions utilizing Building Information Modeling (Revit) allowing both our team and the client to fully comprehend the layout, the site lines and constructability of the facility.



The planning of a juvenile detention facility should be focused on a positive, reduced stress environment for staff, residents, and their families. The built environment should be humanizing and the scale of the facility should relate to its inhabitants.

The interior pallet should be softened and well lit with natural light permeating throughout the building. If permitted, supplemental services should be decentralized and relate to each of the particular housing units. The facility should be designed in such a way as to promote the rehabilitation mission.

Our firm has been engaged in the design of correctional facilities for over 40 years. We have developed appropriate, consistent and tested specifications for all items related to the design of correctional facilities.

Our facilities always take into account operations and maintenance life cycle costs. We design to sustainable best practices in every project that we design. Our specifications will require certain warranties on particular items and we would only specify appropriate equipment that could be easily maintained.

TERREBONNE PARISH JUVENILE DETENTION CENTER

32 beds



GRAY, LA

Project Size // 26,000 sq. ft.

Completion // 2015

Construction Cost // \$9,700,000

Architect // GraceHebert Architects
(Joint Venture with local firm)

The Terrebonne Parish Juvenile center houses 32 juveniles in 4 pods. Each pod has 8 individual sleeping rooms which share a common dayroom and showers. In addition to the housing pods the building includes visitation, classrooms, intake, gym, kitchen/ dining facility, laundry and miscellaneous staff office space. The facility is designed to meet Category 4 Hurricane Requirements. This project is a joint venture.



Correctional NEWS

design+construction+operations

MARCH/APRIL 2016 | VOLUME 19, NUMBER 2

 Emlen MEDIA
DESIGN & CONSTRUCTION AND MORE

MAINTENANCE AND OPERATIONS

Maintenance Report 14

The 3 Important Steps of the
Maintenance Management Triangle

Facility of the Month 22

Smith County's New Jail
Built for Maximum-Security

Renovations & Expansions 26

Focusing on Building Trends &
Industry Accountability

New Juvenile Detention Center is Built for Durability

By Lindsey Coulter and Layne Gudenkauf

Keeping youth safe while providing high-quality educational and rehabilitative services is essentially the goal of any youth detention facility. It certainly holds true at the Terrebonne Parish Juvenile Detention Center in Gray, La., which integrated these values into the design and operation of its new facility.

Modeled for Education, Rehabilitation

Operating on the Louisiana Model of Juvenile Justice, the 26,000-square-foot center, which was completed in December 2015, maintains a population of just 32 youth offenders organized into small groups or communities. The facility provides each youth with their own room, as opposed to using dormitories or bunks, and youth are immediately given access to medical, recreational, mental health, counseling, religious and educational services upon arrival.

Terrebonne Parish correctional officials worked with GraceHebert Architects of Baton Rouge, La., and Duplantis Design Group P.C. (DDG) of Houma, La., to design a facility that would provide more tailored care to youth offenders and adhere to Louisiana Model standards. While the model doesn't dictate design, it does dictate ratios, according to Adam Fishbein, principal and secretary treasurer for GraceHebert. For example, the facility operates on a one-to-eight, staff-youth ratio, and the size of the housing area is based on occupancy. The idea is that separating youth into smaller communities will foster a sense of support and interdependence, and youth will challenge themselves and each other to succeed. These sub-communities within the larger facility are housed, fed and educated as a group.

To perfectly fit this model, the \$10.3 million facility includes four housing units, each containing eight individual rooms. One housing area is reserved for female youth and is not visible from the male areas. Three modern classrooms, each equipped with a computer and smart board, are provided as well as indoor and outdoor recreation spaces. The facility operates as part of the Terrebonne Parish school system and qualified teachers are on staff.

"Fortunately, Terrebonne Parish shared the same vision as our design team to provide spaces, colors, sizes and amenities...which encourage rehabilitation," said Kyle Domangue, AIA, architect and business unit leader for DDG, and Corey Callegan, AIA, architectural

project manager, in a joint statement. "These amenities are very similar to those found in typical public school settings and also include ample amounts of daylighting, which is essential for human wellbeing."

"The overall design truly encourages rehabilitation," said Joseph Harris, Jr., director of the facility. "We systematically used colors that would have a calming effect for residents, with private consultation space that allows social services to conduct quality sessions."

Fishbein added that the facility is as efficient as it is effective. The team worked hard to ensure no space was wasted and that the end result was as efficient a plan as possible. As a result, spaces like visitation areas are very compact, and the design offers few bells and whistles in favor of greater efficiency.

While the facility is a secure area, a concentrated effort was made to ensure it didn't feel like a jail or prison. For the most part, the building itself serves as the secure perimeter with the exception of the sleeping and recreation areas. The building was also positioned so that fenced areas are less visible from the entrance. Interior security includes standard security and detention equipment and two control rooms, which allows for lower staffing levels after hours.

High Performance, Low Maintenance

Furnishings and finishes throughout the offender housing area include simple painted walls, stained concrete floors and a seamless epoxy shower system. Formed plastic furniture and game tables are included in the living spaces and the team took care to include high-quality, long-lasting detention doors, frames and locks. Using these durable products and finishes is intended to lower the facility's lifetime maintenance costs.

"We used durable materials inside and out," said Alex Deshotels, architect and project manager for GraceHebert. "It was a necessity because of the budget, but we try to keep all our projects as low-maintenance as possible. Terrebonne Parish Consolidated Government also had a lot of input as well as far as some of the material choices, systems, etc., because they ultimately maintain the facility."

The GraceHebert/DDG team further insured the optimal operations by including a central plant heating

and cooling system, which will be much more efficient over the building's life cycle, according to Domangue and Callegan in a joint statement.

In Case of Emergency

The building should also age well thanks to the county's request that GraceHebert and DDG design it to meet Category 4 Hurricane Standards. The facility is located near the Gulf of Mexico, and the county's existing facility has undergone significant damage in past storms. One storm in particular destroyed all electronics and door controls, which were located underground. This time around, the design team persuaded the county to instead switch to overhead systems to prevent similar losses in the future.

Structurally, the facility's interior and exterior walls are composed of load-bearing masonry, and the team employed a bar joist system with a built-up roof, according to Deshotels. They also opted for 12-inch block on the building's exterior in lieu of the 8-inch block that would typically be used with a brick cladding. The front of the building is a glass storefront system with protective metal panels. The team designed the panel system to allow for easy application and placement in front of the storefront system, which is located on the non-secure area of the building, allowing the team to include the large expanse of glass and still meet Category 4 Hurricane Standards.

Although the facility can stand up to severe inclement weather, youth will actually be removed from the facility should such an event again threaten the area. "In a weather event, [staff] will vacate the facility and relocate youth if they can't be sent to their families," Fishbein said. "Then, the facility would operate like an emergency operations center, in which the gymnasium will allow for temporary cots."

The county specifically requested that, even in severe weather, the facility remain fully operational with a working kitchen, air-conditioning system, restrooms, plumbing and electricity to make sure emergency personnel can be housed, fed and bathed should the need arise. A backup generator located in the central plant will provide power to the entire facility during a major emergency.

"We provided for the people of Terrebonne a safe and efficient facility for the juveniles and the people working there," Fishbein said. "A lot of people can design facilities, but really it's about the security of both of those groups of people. We think by design we have provided exactly that service to the people of Terrebonne."

TERREBONNE PARISH JUVENILE DETENTION CENTER

Location: Gray, La.
Capacity: 32, 24 male/eight female
Cost: \$10.3 million
Size: 26,000 square feet
Care Model: Louisiana Model of Juvenile Justice



The building should age well thanks to the county's request that GraceHebert and DDG design it to meet Category 4 Hurricane Standards.



The \$10.3 million facility includes four housing units, each containing eight individual rooms.

CALCASIEU PARISH JUVENILE JUSTICE SERVICES

38 beds



LAKE CHARLES, LA

Project Size // 57,000 sq. ft.

Construction Cost // \$19,000,000

Architect // GraceHebert Architects
(Joint Venture with local firm)



The Calcasieu Parish Office Juvenile Justice Services will be able to house 38 offenders in 5 pods as well as the Juvenile Services for the parish including offices for probation, drug court offices, social services/truancy, and assessment services.

The new facility will provide an abundance of daylighting in all areas by looking onto a central court yard which creates a campus feel. This allows for the buildings to be the secure perimeter in lieu of fencing. The offender areas have a large contact visitation, half court gym, learning center (class rooms and multi activity), kitchen, medical suite and a youth intake area which accommodates three (3) Massachusetts Youth Screening Instrument (MAYSI) rooms, large intake desk and ample property storage.



FLORIDA PARISHES JUVENILE DETENTION CENTER

28 bed new Dormitory Expansion



ROBERT, LA

Project Size // 13,583 sq. ft.

Completion // 2011

Construction Cost // \$4,132,064

Architect // GraceHebert Architects

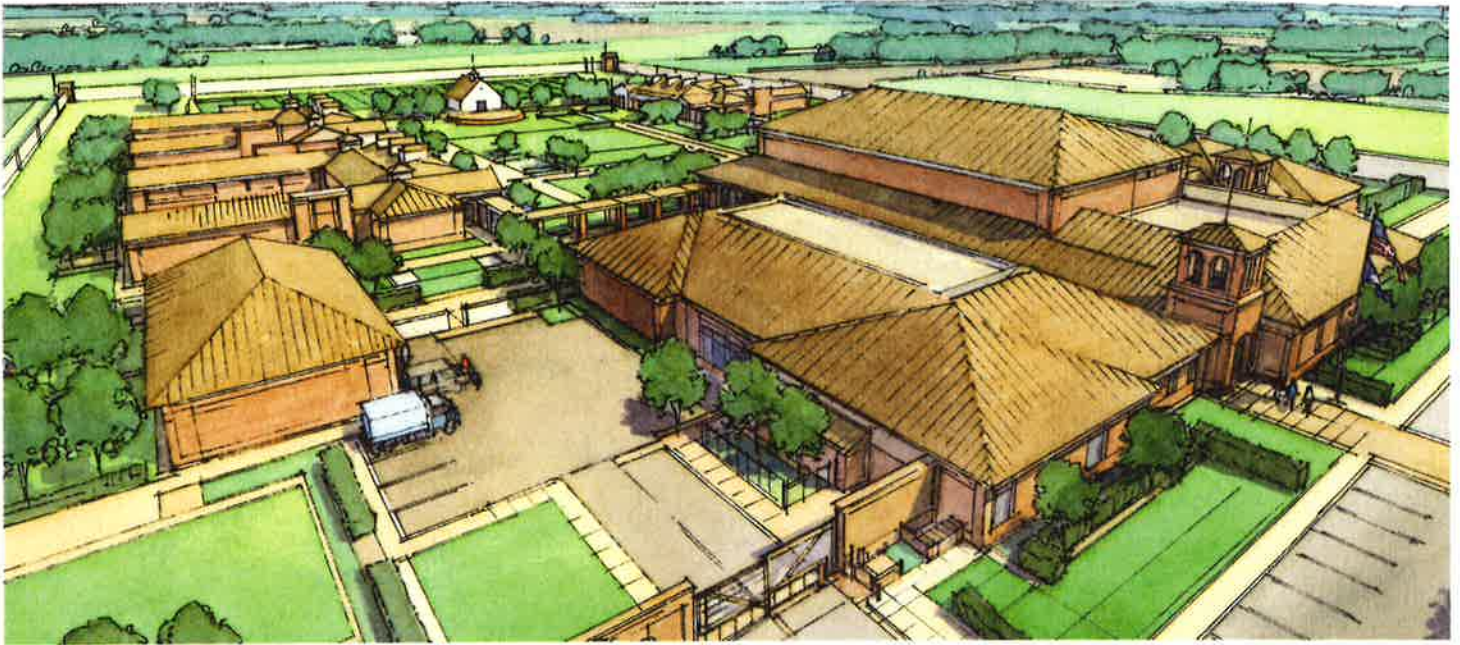
The new building houses 28 beds which will increase the center's capacity from 103 to 131. In addition to the new dormitory, the expansion includes a new sewer treatment plant, additional parking, and renovations to the main facility's kitchen.

The new building is softer and less institutional with high ceilings and natural light. It has a residential feeling to it and brings improved living conditions to the juveniles housed here.



OFFICE OF JUVENILE JUSTICE MASTER PLAN

Proto-typical Campus and Dormitory



STATE OF LOUISIANA

Completion // 2010

Architect // GraceHebert Architects

GraceHebert guided the Office of Juvenile Justice in an analysis of current population data, existing facilities and processes examination and development of a "New Vision" for intensive residential care for the State of Louisiana.

In addition to the smaller housing groups and residential architectural vocabulary criteria decided early on, other concepts developed included family proximity, control of population size, localized treatment services, immediate location of facilities where they are most needed, reduction of operating cost and the incorporation of sustainable design practices.

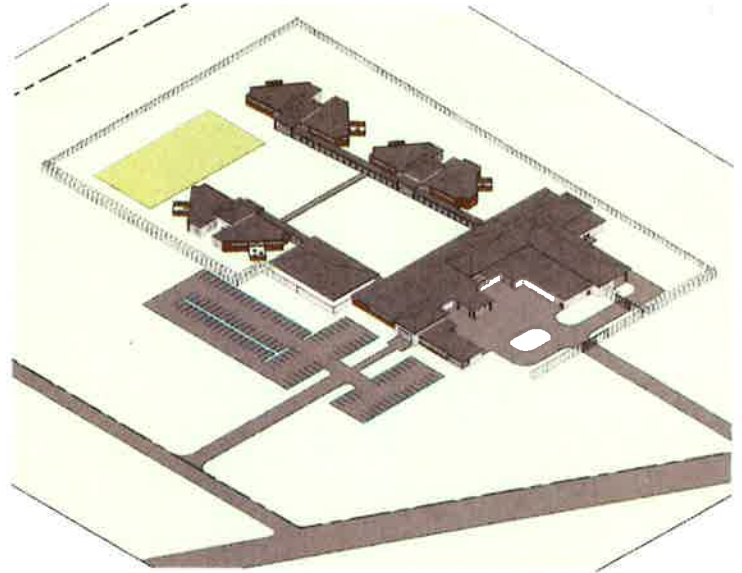
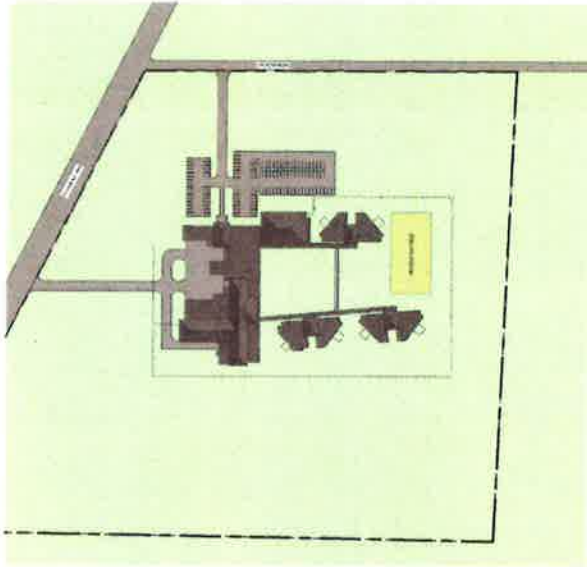
Once the spatial requirements and relationships were refined, two basic modules were developed: the proto-typical dormitory and the proto-typical campus. These designs ultimately will deliver on the promise of new more effective and efficient solution for Intensive Residential Care.



**SINCE ENTERING THE
CORRECTIONAL ARCHITECTURE
MARKET IN 1970, GRACEHEBERT
HAS DESIGNED AND COMPLETED
FACILITIES THAT HAVE
ENCOMPASSED EVERY FACET OF
THE DAILY OPERATIONS OF LAW
ENFORCEMENT.**

SWANSON CENTER FOR YOUTH

72 beds



TULLULAH, LA

Project Size // 62,129 sq. ft.

Completion // awaiting funding

Architect // GraceHebert Architects
(Joint Venture with local firm)

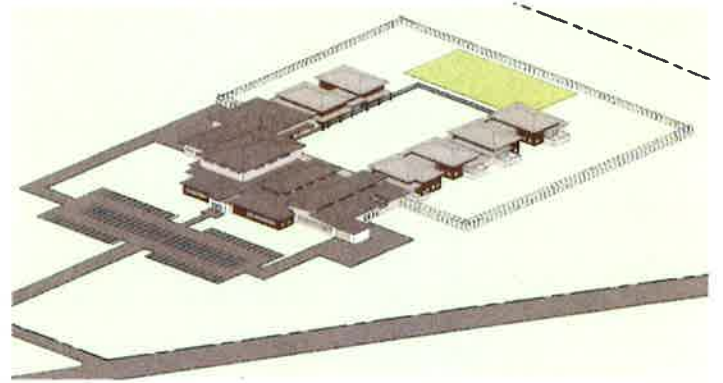
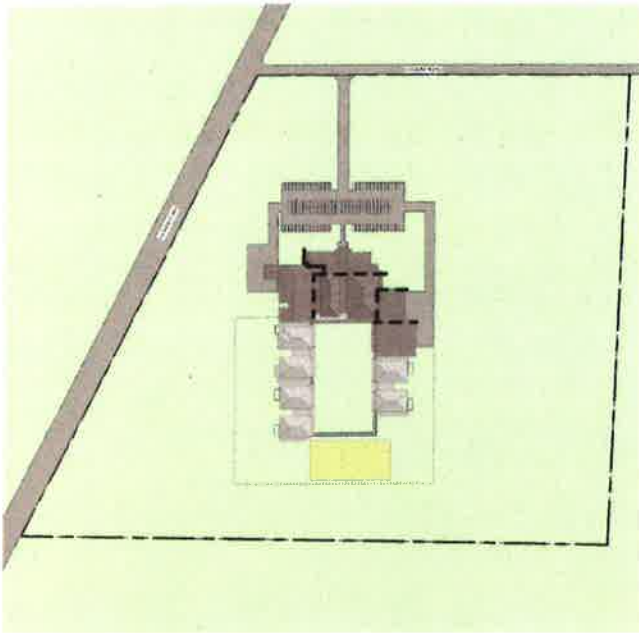
The new Swanson Center for Youth will be a moderate/medium security center for detained youth in the southeaster region of Louisiana. The facility embraces a therapeutic model of treatment for juveniles adjudicated by the State of Louisiana, thus helping promote their successful rehabilitation back into society.

The overall design vocabulary of the campus should deviate from projecting a "detention" or institutional setting and project a safe, comfortable, residential feel. The facility should help create an atmosphere for a positive environment to enable youth to grow, learn, develop and become self-reliant, while engaging and promoting family involvement.

This facility was approved through schematic design. We are awaiting state funding to proceed with the planned project.

JETSON CENTER FOR YOUTH

72 beds



BAKER, LA

Project Size // 62,129 sq. ft.

Completion // awaiting funding

Architect // GraceHebert Architects

The new Jetson Center for Youth embraces a therapeutic model of treatment for juveniles adjudicated by the State of Louisiana, thus helping promote their successful rehabilitation back into society. The facility will be a moderate/medium security center for detained youth in the southeaster region of Louisiana.

The overall design vocabulary of the campus should deviate from projecting a "detention" or institutional setting and project a safe, comfortable, residential feel. The facility should help create an atmosphere for a positive environment to enable youth to grow, learn, develop and become self-reliant, while engaging and promoting family involvement.

This facility was approved through schematic design. We are awaiting state funding to proceed with the planned project.

LAFOURCHE PARISH CORRECTIONAL COMPLEX

600 Beds



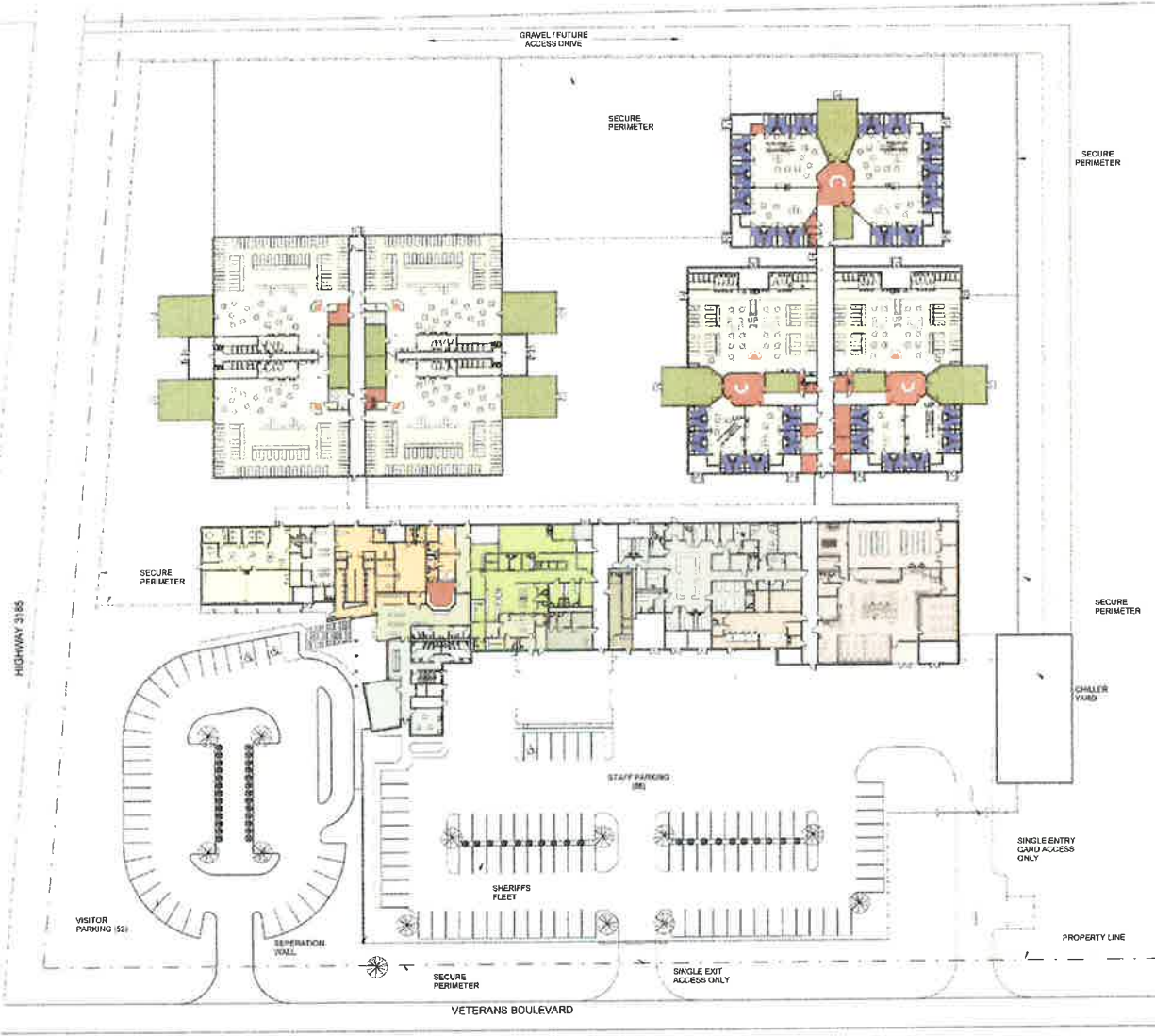
THIBODAUX, LA

Project Size // 120,000 sq. ft.

Architect // GraceHebert Architects
(Joint Venture with local firm)

The Lafourche Parish Correctional Complex (LPCC) is a 120,000 s.f. 600 bed development that facilitates the following: intake processing, work release, video visitation, medical unit, kitchen, and classroom space for rehabilitation. The project is anticipated to receive LEED certification through its sustainable design, energy efficiency, and extracurricular farming and compost programs.

The vision and mission of the LPCC is to provide and ensure a safe, secure, efficient and constitutional, new-generation facility. This facility shall serve and protect the community, the staff and the inmates while seeking to return a productive citizen to our community through the use of technology, innovative and comprehensive rehabilitative and re-entry initiatives. This project is a Joint Venture.



ORLEANS PARISH SHERIFF'S OFFICE PHASE I

Kitchen, Warehouse and Central Plant



NEW ORLEANS, LA

Project Size // 560,605 sq. ft.

Completion // 2012

Architect // GraceHebert Architects was a Justice Design Consultant

Phase I includes the replacement of the central warehouse, kitchen and central plant for the entire Orleans Parish Sheriffs Office justice complex. The facility which will include loading docks, controlled humidity warehouses, commercial kitchen and stand alone mechanical and electrical plant will encompass approximately 136,041 sq. ft.

“THE DESIGN TEAM HAS DEMONSTRATED THE ABILITY TO WORK WITH CORRECTIONS STAFF TO MAKE SURE ALL OF OUR NEEDS ARE ADDRESSED AND THAT APPROPRIATE SECURITY CONCERNS ARE INCORPORATED IN THE DESIGN. THEY CONTINUE TO WORK DILIGENTLY AND REMAIN COMMITTED TO MEETINGS DURING CONSTRUCTION.”

SHERIFF MARLIN GUSMAN
ORLEANS PARISH SHERIFF'S OFFICE



ORLEANS PARISH SHERIFF'S OFFICE PHASE II

Intake Processing // Templeman III & IV Replacement (Joint Venture)



NEW ORLEANS, LA

Project Size // 424,564 sq. ft.

Completion // 2015

Architect // GraceHebert Architects
(Joint Venture)

The campus' Phase II will consist of approximately 424,564 sq. ft. divided among new housing units, inmate processing center, and administrative complex for the Sheriff and his staff. The facility will be fourteen feet above the flood elevation.

The project will house inmates currently held in makeshift facilities, intended as temporary fixes after Katrina. The building also consolidates administrative facilities now spread throughout the parish. The housing component of the project features a four-story, concrete-framed building with intermediate mezzanines that will house 1,438

inmates. The building includes 20 double-occupancy housing units with 30 cells per unit. The facility will house different custody levels, so some will be celled, and some will be open dorms. All cells are precast concrete that will be fabricated and finished off-site before being transported and assembled with the structure. The Intake Processing Center replaces the temporary processing center in use since June 2008. It will contain processing and booking areas, secure holding facilities, medical screening, inmate release, property rooms, and two courtrooms. The building also features a secure and enclosed vehicle sally port on the first floor to allow for safer transfers of arrested individuals arriving for processing.

The administration building is a three-story office building, providing space to consolidate the Orleans Parish Sheriff's Office, functions currently spread out at other locations. The building's plan accommodates specialized training and educational programs and replaces the computer facility located within the Community Corrections Center.



Orleans Parish Nears Completion of Post-Katrina Prison

By Lindsey Coulter

NEW ORLEANS — Almost a decade after Hurricane Katrina decimated New Orleans and surrounding communities, the Orleans Parish Sheriff's Office (OSPO) is turning over a new leaf. With the support of \$254 million in FEMA funding, the department is now in the process of replacing flooded and damaged facilities with a new state-of-the-art correctional complex, and planning for a stronger, more sustainable future.

Prior to Katrina, the site, which will soon be home to the parish's new jail and intake facility, housed several departmental buildings that were heavily damaged in the storm. Those buildings were ultimately demolished in 2007, and for several years, the department has been spread across multiple temporary structures. Even before Katrina, however, the department was inefficient and awkwardly situated.

"We are literally light years behind the correctional curve," said Chief Corrections Deputy Michael Tidwell in reference to the department's current infrastructure. "We are very much a fractured department in that we have widespread facilities."

Currently the OSPO has offices in a former motel, a former firehouse and in a facility that was built and rebuilt based on a 1920s-era design. However, with the help of GraceHebert Architects of Baton Rouge, La., the far-flung network of facilities will soon be condensed into one primary campus, and all structures will be upgraded to meet ACA codes and standards.

"The project started out as a campus planning [endeavor] in figuring out how we could actually make all of these projects contiguous," said Gerald Hebert, II, AIA, NCARB, LEED, president of project architect GraceHebert Architects. "What we looked at was taking a campus that was spread across multiple city blocks and basically consolidating that campus into one secure area."

The resulting 433,409-square-foot Intake Processing Center, which is tentatively scheduled for a late 2014 completion, will replace multiple buildings that were rendered useless in the wake of Hurricane Katrina. It will include secure holding facilities, medical screening space, inmate release areas, property rooms and two courtrooms, as well as an enclosed vehicle sally port. The three-story administrative building nearby will consolidate offices currently located at several different facilities, and an eight-story concrete-framed housing structure will hold an estimated 1,438 inmates. That facility in particular will include 600 double-occupancy cells across 20 housing units. Total building costs for the three structures have been estimated at \$145 million.

The Sheriff's Office, under the guidance of Sheriff Marlin Gusman, has al-

ready gained occupancy to a newly completed kitchen and warehouse structure, which comprised the first phase of construction. This \$81.5 million, three-story facility was designed by Sizeler Thompson Brown and built by Woodward Design+Build, both of New Orleans, and encompasses roughly 165,000 square

feet. The facility, which Tidwell calls "a marvel," also contains its own generators and a complete cook-chill operation. When fully occupied, it will allow staff to serve more than 25,000 meals daily. In anticipation of more extreme weather, all equipment has been moved to the upper floors of the facility to protect it from po-

tential flooding.

The soon-to-be-completed housing structure will also mark a turning point for the Sheriff's Office, according to GraceHebert Architects. "It was an opportunity

See *New Orleans* page 23 ➔

New Orleans, from page 21

to really bring 21st century elements into the design," Hebert said. "First of all, the visibility is improved throughout the facility. It's designed around a vertical core. We have exercise yards adjacent to each housing unit to allow for fresh air and natural light to come into each of the day-room spaces."

Additionally, all housing pods will now have adjacent control rooms, and inmate access will be limited to a secure sallyport that leads directly into holding and processing areas, significantly streamlining inmate movement.

Together, these features will give the department an ideal facility to help implement the direct supervision correctional model. "Its functionality is exactly what a direct supervision facility should be," Tidwell said.

Tidwell appreciates that the newly adopted model will also allow inmates greater freedom, as they will not be constantly confined.

"We are in the people business," Tidwell said. "Whenever you take somebody's freedom away you have to make

sure they are treated in a humane fashion and that they are in facilities that answer the vast majority of their basic needs. The facilities that we run now certainly do, although I think anybody will recognize that when you have an older facility, it is far more challenging in terms of both the physical plan and the population."

These challenges were also reflected throughout the design and construction process, and sometimes forced the team to get creative. "The site had very many constraints," Hebert added. "What we had to do was obviously go vertical and stack housing units, while achieving as much visibility as possible in each of the housing units, whether they were dorms or cells."

Rebuilding the facility with FEMA funding also put certain parameters on the construction and scope of the project. "FEMA requires us to build back to capacity and function, so we had some constraints placed upon us as to what we could and couldn't do relative to those dollars," Hebert said. "It was quite a challenge, but at the end of the day, we were able to work with FEMA and really make a top-of-the-line justice facility."

"This project is considered a replace-



ment project as far as FEMA is concerned," Tidwell added. "FEMA rules are...very simple. Replacing a project is exactly what it means; it will replace what you lost. There is nothing in the new facility that we did not have before. Certainly it's in a new format, new design, new approach and includes new technology, but it's basically the same thing we had prior to Katrina."

Though the facility includes many of the same features and amenities of pre-Katrina buildings, it is unlikely to experience the same level of environmental damage in the future. Much thought was given to the way the building would react in a storm and what materials would give

it the best opportunity for success. The GraceHebert team specifically raised the facility above the flood inundation level set by Katrina, and added windscreens to help it stand up against force, Hebert said. The campus' new geo-central water plant adds to the facility's sustainability efforts, and a recycling program will also be instituted throughout.

The McDonnel Group LLC and Archer Western Ltd., based in Metairie, La. served jointly as the project's lead construction contractors, using Building

See *New Orleans*, page 41 ➔

New Orleans, from page 23

Information Modeling (BIM) technology to coordinate mechanical, plumbing, electrical, fire protection, security and other features. They also integrated metal and pre-cast panels and precast cells to expedite construction.

The ability to withstand severe weather and potential flooding was paramount; however, being able to also get the facility back online as soon as possible after a storm and changing the community's opinion about incarceration were equally important, according to Hebert.

"That kind of set the parameters of where we started," Hebert said. "From there, we went on to develop a building that read as governmental, that didn't necessarily look like a correctional building. When you look at it from the outside, you hardly even know it's a prison."

Hebert added that it was very important to Sheriff Gusman to focus on rehabilitation.

"As architects, I think our goal is not to create a great project for [ourselves] but a great project for our clients," Hebert said. "I've been doing justice work for roughly 25 years, and I think the exciting thing about working with Sheriff Gusman is that it really gave us an opportunity to look at corrections in a different way. It's not necessarily about locking inmates up. It's about creating secure work environments for staff and a secure place for inmates, but also creating opportunities to get out of the cycle of crime."

The modernized facility will also allow the department to offer a wider variety of rehabilitative and vocational opportunities. "At some point in time, we're going to be incorporating a series of culinary programs, auto repair programs and vehicle maintenance. We're going to more than double our reentry efforts. At present, we do reentry for state inmates returning to our area, and we want to implement a reentry program for city folks that are coming in and out of custody. We also want to double our commitment with the local churches and the faith-based community," Tidwell said.

"[Sheriff Gusman] has been very vocal in his support and active in making sure the community understands that just because you are incarcerated that doesn't mean that your entire life is ruined. From his perspective, the time that you spend incarcerated is time that you should commit to having a better future."

Tidwell added that the department plans to pursue grants to expand programs specifically for the female population as well.

Along with changing attitudes, the project has also provided an economic boost for the surrounding community. Tidwell estimates that the design and construction process created roughly 500 new jobs. He added that this project is currently one of many large-scale improvement projects happening

around New Orleans.

"This city is very much growing in that it is in the final stages of recovery from Katrina," Tidwell commented. "Our construction cranes have just added to the many that you'll see across the New Orleans skyline."

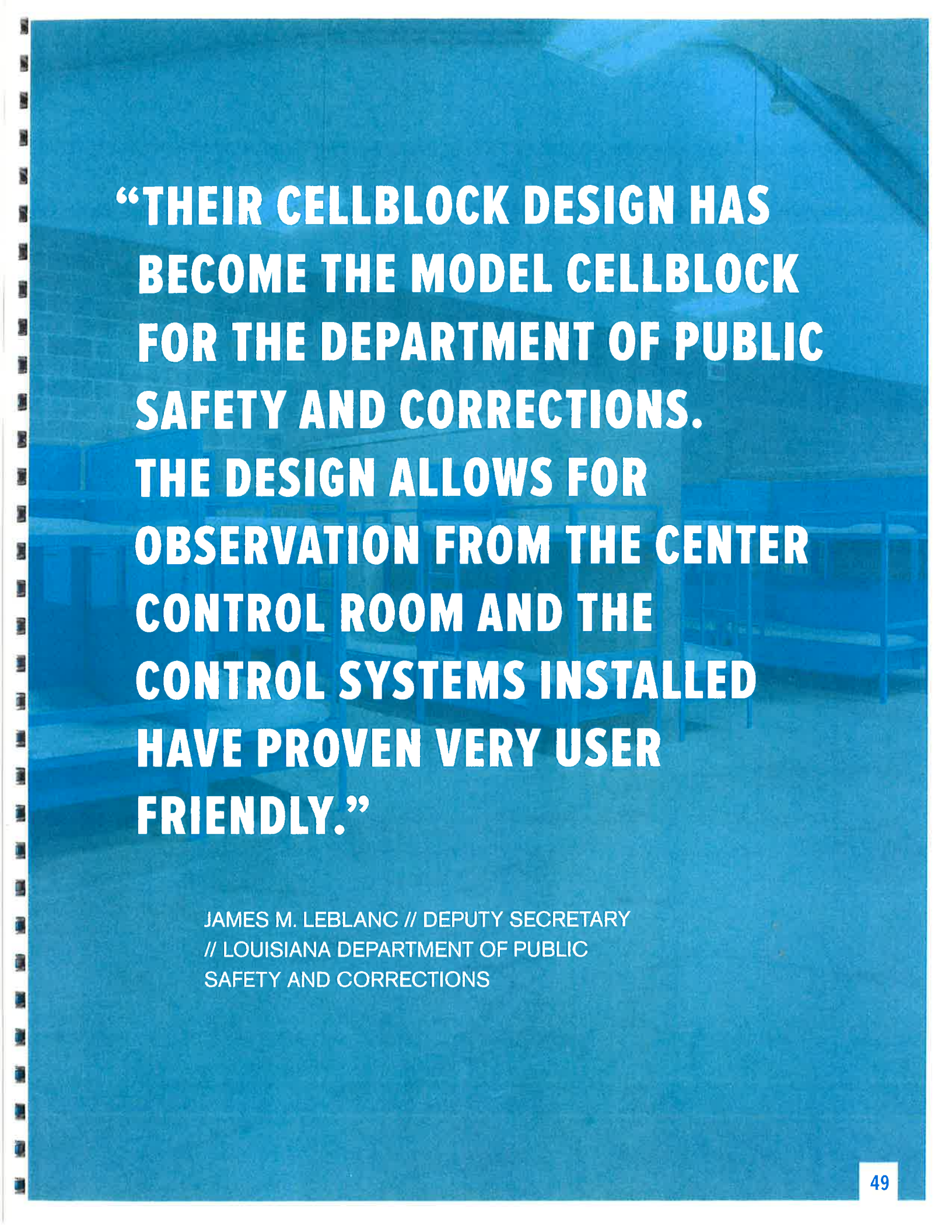
Though construction will likely end on the housing facility, administrative office and intake center in 2014, OSPO officials are already exploring a third expansion to

the new campus. This addition could potentially include mental health facilities, a medical unit and an observation unit, according to Sheriff Gusman.

"We just believe that we're going to be running the best jail operation in the county," Tidwell added. "That's our goal. That's where we're going."

The architectural and engineering team for the expansion project also included Billes Architecture and Julian En-

gineering of New Orleans; Houseman Associates of Alexandria, Va.; global technical consulting firm Lerch Bates, based in Littleton, Colo.; and Bufford Goff & Associates of Columbia, S.C. The project management team is comprised of Ozone Construction Co. dba OMK, which includes Ozone Construction Co.; Montgomery Watson Harza, with headquarters in Broomfield, Colo.; and Kwame Building Group Inc. of St. Louis.



**“THEIR CELLBLOCK DESIGN HAS
BECOME THE MODEL CELLBLOCK
FOR THE DEPARTMENT OF PUBLIC
SAFETY AND CORRECTIONS.
THE DESIGN ALLOWS FOR
OBSERVATION FROM THE CENTER
CONTROL ROOM AND THE
CONTROL SYSTEMS INSTALLED
HAVE PROVEN VERY USER
FRIENDLY.”**

JAMES M. LEBLANC // DEPUTY SECRETARY
// LOUISIANA DEPARTMENT OF PUBLIC
SAFETY AND CORRECTIONS

LAFAYETTE PARISH PUBLIC SAFETY COMPLEX

320 bed Work Release // 216 bed Secure Housing for Worker Dorm



LAFAYETTE, LA

Project Size // 155,000 sq. ft.

Completion // 2014

Architect // GraceHebert Architects

“I HAVE HAD THE PLEASURE TO WORK WITH SEVERAL KEY EMPLOYEES AND FOUND EACH PERSON TO BE VERY MUCH AHEAD OF THE TECHNOLOGICAL AND INNOVATION CURVE REGARDING THEIR KNOWLEDGE AND UNDERSTANDING WITHIN THE INDUSTRY.”

CAPTAIN COLBY BARBIER
LAFAYETTE PARISH SHERIFF'S OFFICE

The new 29-acre complex will consist of five separate buildings; a 320-bed work release center; a 216-bed secure housing outside worker dorm; a 38,000-square-foot warehouse; video visitation center; and sheriff's training center. The work release center is a transitional housing facility in a minimum-security dormitory setting which focuses on encouraging the participants to become more responsible for their own day-to-day activities, while involving less staff intervention with the goal of facilitating a more successful reintegration of the offenders back into society.

The warehouse portion also serve as a work facility for inmates participating in a jail industry program in which inmates manufacture products such as bedding, bags and cardboard boxes. Although not LEED certified, the facility was designed utilizing sustainable design principles.



CorrectionalNEWS

design+construction+operations

Visit us at AC
Booth # 716

JULY/AUGUST 2014 | VOLUME 20, NUMBER 5



DELIVERY METHODS

INSIDE

Precast Project Updates... 19

Facility of the Month... 34

Builders Roundtable... 44

SPOTLIGHT



Many interior spaces were intentionally kept simple to save on construction and long-term maintenance costs.



Photo Credit (left): GraceHebert Architects

The new 155,000-square-foot facility was designed specifically for transitional inmates.

Louisiana Public Safety Complex Reaches Completion

By Lindsey Coulter

The Lafayette Parish transitional worker program at the Lafayette Public Safety Complex in Louisiana was an almost immediate success. The program started with less than a dozen inmates in the summer of 2004, and by the following year, local businesses were employing approximately 150 inmates transitioning out of incarceration. The program helps inmates develop critical job and life skills, but its success also highlighted the parish's infrastructure challenges, said Capt. Colby Barbier of the Lafayette Parish Sheriff's Office.

"We had about 1,400 offenders total and had nowhere to grow," Barbier said. "We were landlocked everywhere else and needed something that would last us 50 to 100 years into the future. Basically, we looked at our operations department-wide and did a consolidation to maximize our efficiency."

The result was the new 29-acre, 155,000-square-foot Lafayette Public Safety Complex designed specifically for the parish's transitional inmates. The \$24 million, minimum-security facility allowed the department to streamline services, increase safety, decrease resource consumption and plan for future growth, all while providing inmates with opportunities to transition safely back into the community.

Lafayette officials selected GraceHebert Architects (formerly Grace & Hebert Architects) of Baton Rouge, La., to plan the ambitious five-building complex. The 40-person firm has a specialization in correctional design, having completed justice numerous projects for the Louisiana Department of Public Safety and Corrections, and was awarded the contract based on their solid overall proposal and collaborative spirit.

The complex's primary buildings range in size from roughly 26,700 square feet to more than 50,000 square feet. A

sheriff's office training facility, which will also be used by law enforcement organizations throughout the region, is one of the first structures visitors encounter. That facility contains an administrative component, as well as a workout facility and a large multipurpose space. Meanwhile, a networked video visitation area allows friends and family members of inmates to connect with loved ones both on site and at the downtown jail.

The adjacent work release center holds 328 beds and is specifically designed for short-term inmates as they re-acclimate to society. The large dormitory spaces surround an interior courtyard and include a dining facility and laundry.

Outside, worker dorms also serve shorter-term inmates in what GraceHebert Principal Adam Fishbein calls "a trustee dorm scenario" that offers more security than the work release residence. As inmates in this area help maintain the parish's medians and roadways, the facility also includes a paved sallyport for the sheriff's van and trailer fleet. The large dormitory building is subdivided into two, 100-bed spaces and was positioned to accommodate future expansion.

Not far from the worker dorms, a 51,000-square-foot building serves three critical functions. The spacious structure offers space for the department's central laundry, as well as warehousing space that allows the parish to buy supplies in bulk to cut costs. It's also the new home of Lapcorr Industries, a program through which inmates manufacture a variety of items that range from pillows to corrugated boxes.

The complex is a vast improvement over the department's previous network of facilities, which included an overflowing downtown jail, a former elementary school and a cramped, 150-square-foot maintenance building. Transitional worker inmates had previously been housed at multiple facilities across the city. Among them was a former hotel

space that made direct supervision a considerable challenge.

Taking all of the parish's needs and infrastructure deficiencies into account, Lafayette correctional officials and the GraceHebert team, including Project Manager Alex Deshotels, hammered out a design in the firm's Building Information Modeling Lab, which features a large screen for displaying and manipulating plans and renderings. Barbier and Lafayette Parish Director of Corrections Rob Reardon also traveled to several similar facilities to glean inspiration and brought their findings and ideas back to the GraceHebert drawing board.

"[Barbier] and [Reardon] spent a lot of time in our office reviewing the design," Fishbein said. "And [Barbier] had a team of transition officers reviewing everything from hardware to wall type constructability throughout the entire process."

The team ultimately settled on a simple, straightforward design that complemented the complex's industrial surroundings, downplayed its correctional purpose and increased safety through structural innovation.

"We kind of took an industrial aesthetic. Driving by, you wouldn't realize it's a justice complex unless you see the sign out front," Fishbein said.

Ratcliff Companies of Alexandria, La., was awarded the construction contract in a competitive bid process and served as the project's general contractor. The firm brought a great deal of correctional building experience to the project. The family-owned company has previously completed projects for municipalities, sheriff's departments and several private prison operators, said CEO and Chairman Rob Ratcliff.

Though the project was delivered successfully and within budget, crews were up against some formidable Louisiana weather and difficult terrain. At one point, the area received 14 inches of rain within

a 24-hour period, flooding the entire work site — a theme that continued throughout much of the project.

"You can't really prepare a work site for that amount of rain," Ratcliff said. "We actually had to dig bleeder ditches to let water drain out of the soil in an attempt to dry out the site."

"About half of the site has wetlands delineation," Fishbein added.

Though he said the team could have mitigated those wetlands, they were able to design the facility such that Lafayette correctional officials got all the functionality they were looking for without impacting the surrounding habitat.

Conservation of resources continued inside the facility. Though the project did not pursue LEED certification, it did integrate a number of sustainable systems and practices. "The whole complex is run off of a central chilled water plant," Fishbein said. "There is also a daylight harvesting system in all of the buildings, which has been very successful."

"All of the mechanical, HVAC, water, electrical and lighting is controlled by a building automation system [BAS]," Barbier added. "All of the temperature settings are done through the BAS. All of the need for hot water, chilled water, it's all done through the BAS based on the need as it arrives. We don't store hot water anywhere on the site."

Buildings throughout the complex were primarily composed of structural steel and/or pre-engineered steel, as well as insulated tilt concrete.

"They really wanted to do insulated tilt concrete construction, and were also very interested in getting as much natural light into the space as possible," Fishbein said.

Through the use of vaulted ceilings coupled with lofty clerestories, the GraceHebert team was able to bring ample light down into the structures. "Certainly for this market the construction type is not

very common," Fishbein said, "but we were able to push the envelope on insulated tilt wall construction, and create very voluminous spaces."

The use of insulated tilt concrete also helped the design team to eliminate one, all-too-common feature of most correctional facilities: perimeter fencing.

"The building envelope itself is, in essence, a secure perimeter," Fishbein said. "Being tilt wall construction, the panels are a foot thick."

However, security measures didn't stop at the building's perimeter. "We've totally revamped our system," Barbier said. "Where it was proprietary before, now it's all open-source. We've tied the security system on this site into the existing security system at our downtown jail and can run either site from either location."

Additionally, the GraceHebert team had to work within the Prison Rape Elimination Act (PREA) guidelines, inspiring them to pay extra attention to sightlines. "Our design philosophy is to ensure the safety of both the inmates and the staff members," Fishbein said. "We always believe in visuals and clear site lines as opposed to relying on security electronics."

As members of the public are also frequent users of the complex, subdividing the site further ensured security to all populations. "The front portion of it is for the general public. So, those who come to visit or those coming to the training facility can access the facility from the main road at the very front of the complex," Fishbein said.

Meanwhile, inmate transportation and service and grounds crew access all occurs at the back of the complex through a secondary street. In areas that require a higher level of security, such as the outside worker dorm, canopied walkways are enclosed with fencing and secured locks. "There is not a cross between the general public and those people that are working and living on the campus," Fishbein said. "They are very separate."

"The entrances to all mechanical, HVAC, electrical, anything that feeds or supports the housing unit are all on the exterior of the building," Barbier added. "We don't have to bring any contractors inside any housing units."

Those who do get a glimpse inside will quickly notice the facility's no-frills interior. According to Barbier, this was an intentional move to conserve funds and reduce long-term maintenance. "We didn't paint any of the concrete walls because that means you just have to paint them again later," he said. "We want something that is going to last a long time; it doesn't have to look fancy."

In areas that did require painting, in-

mates put their newly learned skills to work, saving the department thousands of dollars. "We did our own furniture, fixtures and equipment for \$1.5 million, and used offender labor to do all the painting on the project, which saved us about \$250,000," Barbier said. "We also used offender labor to do all of the sidewalks and all of the landscaping, which saved us about \$200,000."

Work on the public safety complex wrapped up in spring 2014, and the facil-

ity is now preparing to accept its first transitional inmates. However, Barbier is already enjoying the consolidation. "Before, I spent so much travel time back and forth in the different areas I managed," Barbier said. "Now it's all here. I can be there when somebody needs me."

The end of construction has also allowed the department to begin renovations on several of its other facilities, for which they have once more decided to

partner with GraceHebert. "It's been a very successful project. I think we delivered a project to our client that exceeded their expectations," Fishbein said. "As a firm, we pride ourselves on the fact that clients call us for repeat work."

"We're very appreciative of the collaborative working relationship that we had with the sheriff's department personnel as well as the architecture firm," Ratcliff added. "We had a good team."

follow us on

To get Correctional News tweets to your phone, simply text

"FOLLOW CorrectionsNews" to 40404



PRAIRIELAND DETENTION CENTER

691 Dormitory beds



ALVARADO, TX

Project Size // 133,516 sq. ft.

Completion // 2016

Architect // GraceHebert Architects

GraceHebert has designed a safe, secure and humane detention facility that will respect human dignity and cultural and individual differences. The facility is designed utilizing innovative, progressive solutions that meet modern challenges and global realities at a reasonable cost.

The facility includes dormitory housing and segregation units for 617 male inmates and 74 female inmates. The facility is designed with the capability and flexibility to expand or contract bed space capacity as ICE Detention Demographics and population numbers fluctuate. The design includes separate administration areas, public visitation, intake processing center, medical facility, cafeteria, and laundry.

BILOXI JUNIOR HIGH SCHOOL

For grades 7th-8th



BILOXI, MS

Project Size // 195,000 sq. ft.

Architect // Machado | Patano



The new Biloxi Junior High School will generally consist of two buildings totaling 195,000 square feet constructed around an internal courtyard. The buildings are primarily masonry bearing walls with architectural brick face veneers. The buildings will be cooled and heated with a central plant system consisting of central chillers, cooling towers, and boilers with four pipe fan coils and air handlers throughout the buildings.

The buildings will contain approximately 52 typical classrooms; STEM classrooms, Special education classrooms; science labs with modular lab stations, computer classrooms; band hall with support storage areas, strings classroom, choral classroom, piano classroom; art classroom; media center with computer classroom; double court gymnasium with concessions, stage and basketball/volleyball

locker rooms; and cafeteria and kitchen with an inside/outside dining area.

The school is situated on approximately 21 acres, which is part of over 300 acres campus the district owns. The project includes full electrical design, mechanical design, civil design, structural design, and architectural design. The electrical design included: interior and exterior lighting, lighting control system, communications and data infrastructure, fire alarm system, surveillance system, and complete power system.

Machado | Patano is lead over construction administration and construction management for project

BILOXI PERFORMING ARTS

For Biloxi Public Schools



BILOXI, MS

Project Size // 45,000 sq. ft.

Architect // Machado | Patano

The 45,000 s.f. performing arts facility is to include between 800 and 900 seats with lobby, restrooms, catering room, stage/proscenium, forestage apron, fly area, orchestra pit, lighting and sound room, backstage changing and staging areas, scene shop, and associated storage rooms.



HUNTINGTON INGALLS INDUSTRIES

Bay1 rolling covers, 800 Area Platen, and Non-Destructive Testing Lab



PASCAGOULA, MS

Project Size // various projects

Architect // Machado | Patano

Machado Patano provided complete in-house turn-key design services to provide a feasibility study, ROM estimates, geotechnical investigations, site surveys and construction documents for the current construction of 2 EA – 488' long by 101' wide covered work areas for assembling ship sections, but also allows for portal crane aerial access to remove assembled ship sections with rolling lightweight pre-engineered heavy duty vinyl tent structures (4 EA per work bay).

Machado Patano also provided a construction package for upgrades to be performed to the 800 area platen. Upgrades

will include the installation of eight (8) ea. existing Big Top tents and twelve (12) ea. owner-furnished welding machine tables in the area.

The Non-Destructive Testing (NDT) Laboratory building project consisted of adding a chain wall elevated 4,200 SF two story lean-to addition onto the east side of the existing elevated Component Packaging Area (CPA) high bay structure.

CITY OF D'IBERVILLE FIRE STATION #1



D'IBERVILLE, MS

Project Size // 14,000 sq. ft.

Completion // 2014

Architect // Machado | Patano

As part of a large interstate expansion project, the City of D'Iberville's first fire station was acquired by the MS Dept. of Transportation and left one of the fastest growing City's on the MS Gulf Coast with no fire station. Through some new State Legislation, the City of D'Iberville was able to solicit Design-Build teams to present qualifications and be selected through an Interview process.

Machado | Patano teamed with a Contractor local to the City of D'Iberville for more than 30 years (Southeastern Erectors). The team of Machado | Patano and Southeastern Erectors was subsequently awarded the project and the new \$2.6M complex is known as FIRESTATION NO. 1 to the City of D'Iberville and will forever be a landmark municipal complex to the City.

The Fire station is approximately 14,000 square feet and is a state of the art facility that not only houses approximately 20 fireman, 6 large fire trucks, equipment, etc. but as well allows the services to the citizens of the City of D'Iberville.

HARRISON COUNTY UTILITY AUTHORITY

Harrison County Board of Supervisors



GULFPORT, MS

Completion // 2011

Architect // Machado | Patano

Projects include: 5-wastewater treatment facilities, 13-elevated water tanks, 14-water wells, 29-sewer pumping stations, 380,000 LF of water lines, 301,000 LF of force sewer lines, and 84,000 LF of gravity sewer lines.

Services included: managing the repair of damaged facilities, managing the design and construction of new facilities, coordinating multiple funding sources, coordinating CDBG, MEMA, and FEMA approval processes, and managing 12-engineering and testing firms and 15-general contractors. The total CDBG funding for these projects was \$240 Million.

JACKSON COUNTY SCHOOLS PROJECT MANAGEMENT

Project Management Services



VANCELEAVE, MS

Completion // 2014

Architect // Machado | Patano

The Jackson County School District has employed Machado | Patano to be the project/construction manager on the construction of three new academic buildings. MP has taken on the key role of coordinated all aspects of the projects with the architects/engineers, contractors, and school officials. The project that M|P is responsible for include the following:

- East Central Middle School
- Vancelave Upper Elementary Admin Building
- St. Martin Middle School Classroom Addition



CAPACITY

OUR YEARS OF EXPERIENCE AND
MASTERY OF A VARIETY OF DISCIPLINES
ENSURE THAT WE CONSISTENTLY
DELIVER SUCCESSFUL PROJECTS.



CAPACITY FOR PERFORMANCE

Our team is committed and dedicated to your project!

With a combined team of almost 50, MP+GraceHebert have the capacity and resources to meet your project needs.

With 17 team members from MP and 32 team members from GraceHebert, our combined team is dedicated to put forth any time necessary to provide exceptional services.

MP office will be used as our team's homebase. We can be available and at the project site within a moments notice.



TIMELINE OF EVENTS

We propose the following schedule for your project:

- **Programming: 3 weeks + 1 week Owner Review Period**
- **Schematic Design: 8 Weeks + 1 week Owner Review**
- **Design Development: 8 Weeks + 1 week Owner Review**
- **Construction Documents: 12 Weeks + 1 week Owner Review**
- **Construction: 12- 14 Months**

It is the commitment of the entire team to meet all schedule deadlines. The schedule production and management will begin at the inception of the project.

Along with design and estimate review, the schedule will be reviewed in the team meetings to ensure the project is tracking according to plan. As the project moves forward, the entire team will be constantly assess the goals of the project for schedule, budget, design, quality, etc.

Through the entire process our Team will work to ensure a positive working environment in which work is completed to the expectations of the stakeholders.

CorrectionalNEWS

design+construction+operations

Visit us at ACA
Booth #705

JANUARY/FEBRUARY 2016 | VOLUME 19, NUMBER 1



- **Architect List...22**
- **Facility of the Month...34**
- **Architect Roundtable...43**

GraceHebert Architects Builds on Decades of Corrections Success

By Lindsey Coulter

For most companies, evolution is necessary to survival. Perhaps nowhere is this truer than in the justice and correctional architecture industry, where changing standards, sentencing practices, populations and perspectives on treatment and rehabilitation keep facility designers constantly on their toes. GraceHebert Architects of Baton Rouge, La., learned early on to anticipate and adapt to this ever-changing landscape, and will next year celebrate its 50th anniversary.

Founded in 1967, GraceHebert Architects was initially Newman and Grace Architects, transitioning to Grace and Associates before a recent rebranding to GraceHebert Architects. Despite the evolution in identity, the company has remained firm in its client-centered design philosophy.

Holistic Immersive Design

"A lot of firms talk about listening to their clients, but we take that to a whole different level," said Jerry Hebert, AIA, NCARB, LEED AP, the firm's president and managing partner, referring to GraceHebert's unique design methodology.

The firm has developed what it calls a holistic immersive design process that uses multiple software programs to effectively immerse clients in their facilities. Through computer modeling and design technology available in GraceHebert's Building Information Modeling (BIM) Lab, the team develops a 3-D building

model that shows clients the look and feel of their future facility. "We take the process from development and project programming all the way through model development," said Hebert. "That model grows with our clients through the development process."

That process also allows GraceHebert to continue designing the facility until it is a perfect reflection of the client's needs. "We're letting [the client] drive how they want their facility to operate and how they want it to work," added Principal Adam Fishbein, AIA, NCARB. "The model gets more refined as we go through the design process. By the time we're ready to put the project out to construction, they know exactly what they are getting."

"We can't have a bad facility; it's just not in our DNA and not something that we're ever going to do," Fishbein continued. "You're going to build a jail once and you're not going to get to do it again as a sheriff or municipality, at least not in my lifetime, so it's really important to us that our clients are happy with what we do."

To further build on that sense of collaboration and communication, GraceHebert also offers clients access to its specially designed ProjectTrek software, a digital filing cabinet that keeps a thorough record of a project's progress.

"We are a very transparent firm," Fishbein added. "Our clients have access to Project Trek at any time, and almost every document created for the



In GraceHebert's Building Information Modeling (BIM) Lab, the team develops a 3-D building model that shows clients the look and feel of their future facility.

project is on Project Trek — from programming all the way through construction, warranty and punch list. Their whole project is at their disposal 24/7."

Designing for Change

GraceHebert received its first justice contract more than 40 years ago for a project at the Louisiana State Penitentiary, also known as Angola. That project led to a lasting relationship with the Louisiana Department of Corrections, and today Hebert and Fishbein estimate that the firm has completed more than 60 justice projects across the state of Louisiana and throughout the Southeast, necessitating a second office in New Orleans. Currently, the 35-employee company has four active justice teams working on a variety of projects in the region.

"It's a testament to our employees that we get the level of detention projects in the Southeast region that we do," Fishbein said. "There's a very closed or tight circle of people in the detention world, and when they want you to work on their projects, that's really important to us."

While delivering solid and well-designed projects early on helped the firm establish itself in the industry, its success can also be attributed to anticipating significant justice and correctional shifts.

"We can bring a lot of envelope-pushing national ideas into our design concepts," Fishbein said. "It used to be that warehousing mentality. Jails were just about containing inmates, and it wasn't about rehabilitation, getting inmates out or early intervention. The market has changed, and we're trying to incarcerate less and get people back into their communities."

The company's work to design facilities that are more supportive of staff health and safety has also been a factor in its success. "It's within our purview in how we design to ensure the safety of both the inmates and the staff, and we try to give them as good an environment as we can," Fishbein added. "It's horrible to work in a facility that's dark, dingy and depresses everybody."

"Twenty years ago we weren't very worried about the interior design of jails, but today we really do," Hebert added. "We're really focused on materials, colors and daylighting. We try to put [corrections staff] in a situation where they can improve lives and outcomes."

The ability to create these rehabilitative environments also comes from the firm's broad and diverse design expertise. While the company focuses a great deal on the justice and detention arena, it also has a firm stake in a number of other verticals. "Over the years, we've diversified to include a much more diverse portfolio, including medical, K-12, higher education, ecclesiastical and commercial projects. Justice probably constitutes 40 percent of our portfolio at any given time," said Fishbein.

This allows the firm to carry best practices and emerging trends in other verticals into justice facilities to improve areas such as jail medical suites and classrooms for juvenile offenders. "Having that diverse knowledge really is a huge asset for the client," Hebert added. "It's a different way of looking at things and adds a lot to the discussion and to the end product."

Looking Toward the Future

While GraceHebert remains in high demand throughout the Southeast region, the firm is now ready and eager to expand its reach. Hebert and Fishbein believe this expansion will rely heavily on maintaining a top-notch team.

"Our goal is to double revenue by 2020," Hebert said. "Justice is one of the sectors we want to take national, and we feel pretty confident that we can do that."

"We know that what makes great firms is great people," Hebert continued. "We treat employees with respect and integrity and expect them to provide the best client service possible. What we do is give them the flexibility and the capability to do that."

Building a strong and capable team is even more important in the current correctional and justice climate, as many projects are becoming smaller and less frequent. Key members of the firm's current justice team include Jody Gascon, AIA NCARB, ICC, a partner and architect who manages production, and architect Alex Deshotels, AIA.

"Everybody is seeing this contraction of inmates and looking at how we manage them and improve their lives, and many people look at that as the corrections industry spiraling down," Hebert noted. "We look at it a little bit differently. We think it's an opportunity to take facilities and transform them from what they were into rehabilitation facilities and looking outside the envelope of corrections. We think it actually opens the doors to a lot of different opportunities for justice and corrections architecture. If you're just looking at what we did in the past, then you're probably right, the well is not very deep. If you're looking at it in terms of where we're going to be in the next 10 years — and where corrections is going to be — there's a lot of opportunity."

A Successful Legacy

Though the company and its current leadership show no signs of slowing down, Hebert and Fishbein can already point to some significant career successes. The firm is particularly proud of its work on the massive Orleans Parish Prison complex and its work with the New Orleans Parish Sheriff's Office. The city's justice and detention facilities were decimated following Hurricane Katrina, and the firm in turn designed a safe, modern and centralized correctional complex. The \$145 million, 433,409-square-foot project required extensive relationship

building and negotiations with FEMA, not to mention a design that could address a litany of design and facility deficiencies in the existing network of buildings.

"When I look back at that building, as a firm and as a team, we really achieved something special," Hebert said. "We really took a giant leap, and I think out of all our projects we know — and the sheriff would agree — that we did the best we

could have done under the circumstances and achieved a phenomenal facility. We could have taken the easy road and just built back the same thing, but we didn't. We took the right road to build a really innovative, first-class facility, and I think it's going to pay dividends in the long run for the community."

In the meantime, the company is currently designing three juvenile facil-

ities, a facility for the Lafourche Parish Sheriff's Office and continues to work in New Orleans on multiple projects for Sheriff Marlin Gusman. The firm's other notable projects include the Lafayette Public Safety Complex in Lafayette, La.; the Bossier Parish Maximum Security Jail in Plain Dealing, La.; and the Florida Parishes Juvenile Detention Center in Covington, La.



MACHADO PATANO, PLLC
1641 POPPS FERRY ROAD, SUITE A4
BILOXI, MISSISSIPPI 39532



GRACEHEBERT ARCHITECTS, APAC
650 POYDRAS STREET, SUITE 1110
NEW ORLEANS, LOUISIANA 70130