

RECEIVED  
JUN 26 2017  
BY: *Allen*  
Chancery Clerk  
D.C.  
4:18 *AL*

LEBATARD ARCHITECTURE

2554 Beach Boulevard, Suite D, Biloxi, Mississippi 39531

LeBatard Architecture PLLC

Request for Qualifications for:

Professional Services to Design and  
Construct a Juvenile Detention Center  
in Harrison County, Mississippi

Harrison County  
Juvenile Detention Center

**Proposal to Provide  
Professional Design  
and Construct a Juvenile Detention  
Center in Harrison County.**

**June 27, 2017**



LeBatard  
Architecture, PLLC

2554 Beach Blvd.  
Suite D  
Biloxi, MS 39531  
T: 228.388.5099  
F: 228.388.7088

# Contents

---

Letter of Interest.....	05
Firm Profile.....	07
Design Approach.....	09
Code Review.....	10
Scope of Work.....	13
Organizational Chart.....	15
Resumes.....	16
Experience.....	35
Letters of Reference.....	40
Contact Information.....	45

June 27, 2017

Mr. John McAdams  
Chancery Clerk / Clerk of the Board  
Harrison County Board of Supervisors  
Chancery Clerk Office  
Post Office Drawer CC  
Gulfport, MS 39502

Attn: Mr. John McAdams

Dear Mr. McAdams

LeBatard Architecture is pleased to respond to Harrison County's Request for Qualifications to provide Design and Construction of a New Juvenile Detention Center.

We have assembled an outstanding team of professionals that are well versed in both Adult and Youth Detention Complexes. Our objective is to provide Harrison County with quality architectural and engineering services that meet the client's needs.

I am including in this RFQ similar project experience in which we have been evolved that reflects our ability to understand the needs and requirements of Harrison County in addition to the requirements of the RFQ. We have cultivated a firm culture that promotes listening to the needs of our client and focuses on the realization of their goals. We take pride in the part we play in delivering quality architecture to our community.

We hope to have the opportunity to personally introduce our team and discuss your vision.

On the following pages, we have outlined the requested information and included selected examples of recent work. Please let us know if we can provide any further information. We look forward to the opportunity to meet with you and further present our abilities.

Respectfully submitted,



Mike LeBatard NCARB, AIA  
Principal

Architecture  
Planning  
Urban Design

## **HISTORY**

Michael LeBatard formed LeBatard Architecture to bring over 30 years of combined design experience which together have established an award-winning professional practice of architectural design and planning.

Through the years Michael developed a strong relationship as colleagues practicing architecture all along the Mississippi Gulf Coast. The firm specializes in both highly technical, community based projects throughout the Southeast.

## **FIRM**

Firm principal, Michael LeBatard has assembled a firm in the Gulf South region. LeBatard Architecture continues to grow through long-term relationships with a wide variety of client groups and expansion into new markets. Our integrated team approach delivers successful solutions to a full range of complex project needs.



## **SCOPE**

- Commercial Office Buildings
- Community Center
- Convention Centers
- Education Facilities
- Governmental Buildings
- Healthcare Facilities
- High-rise Condominiums
- Hotels, Condo-Hotels
- Modular Housing
- Multi-Family Residential
- Retail Centers
- Urban Mixed-Use Developments

## **SERVICE**

As a full-service Architectural firm, LeBatard Architecture provides close client contact and comprehensive project delivery services from programming, master planning and design through construction administration and project delivery.

LeBatard Architecture strives to produce an architecture of timeless character and quality, an architecture that serves current functional needs as well as long-range strategic goals, an architecture in dynamic harmony with its visual, economic, cultural, and community contexts.

## Design Approach

---

Our personal design philosophy is based on a clear goal of comprehensive service to our clients. We have built a collaborative practice of committed professionals that approach each project as an opportunity to deliver the best available solutions to our clients' needs.

As each project is unique, we adjust our particular focus to the specifics of each opportunity. Applied across a wide range of planning and design work, the key components of our comprehensive approach can be summarized as follows:

- **SERVICE** Our ultimate focus is client service. In fostering alliances with our clients, we are team members with a collective vision. In teaming with the professional disciplines involved in each project we coordinate a seamless project delivery. We proactively anticipate project needs and deliver a finished project that successfully expresses the many goals and aspirations of the client.
- **CONTRIBUTION** We seek to contribute to the realization of significant growth and improvements to the communities in which we work. We plan and design to facilitate great environments for an enhanced quality of life. We utilize our firm-wide talent, experience, and resources to build increased vitality and value into businesses, institutions, and neighborhoods.
- **CREATIVITY** We believe great design embodies timeless characteristics of beauty, appropriateness, and authenticity. Rather than adhere to prescribed styles, we promote a design approach that derives from the individual needs of each project. We are fluent across a full range of architectural styles, from regional vernacular traditions to the innovations of more contemporary expressions.
- **QUALITY** As a service-oriented firm, our business depends on the consistent delivery of quality solutions. Throughout 30 years, we have grown an award-winning professional practice through serving repeat clients with close, personal attention. We seek out significant projects that have the capacity for building new opportunities to continue our focus on delivering great quality and value.
- **SUCCESS** We measure the success of our efforts many ways: In gaining a deep understanding of the complex needs of each client group, in capturing the spirit of an institution through creative architectural expression, in the satisfaction of daily users of a facility, and in the gratification of repeat client work over many years of successful ventures.

## Service Capability

---

LeBatard Architecture is proud of our history of maintaining long-term relationships with our many clients, through our commitment to exemplary professional services. These long-term relationships are among many that exemplify or consistent approach to providing high-quality planning and design services on a wide variety of projects.

We achieve this level of service by working closely with our clients to implement their business strategies into successful facilities. With extensive client reviews throughout the programming, design, and production phases, we maintain close adherence to project goals, budgets and schedules.

Mike LeBatard, for over 26 years has served the Mississippi Gulf Coast through his architectural practice.

LeBatard Architecture is positioned with staff, expertise and experience to respond to the needs of Harrison County from our Biloxi, Mississippi office located next to Edgewater Mall.



# Scope of Work

---

## **A. Preliminary Design and Preparation of Project Cost** **9 to 11 weeks**

---

- Programming 1 week
- Schematic Design 4 to 6 weeks
- Design Development 4 weeks

1. The Preliminary Design phase begins with a complete written program developed for sitting down with the in-user (actual entity that will be utilizing the facility) to determine their needs and requirements along with visits to the site where the building will be constructed.

This phase helps to develop a clear and concise picture of the needs of the end-user and site requirements.

The following items are then reviewed at the beginning and throughout the preliminary design phase:

- Project budget
- End-user's needs
- International Building Codes 2012 or current
- NFA Life Safety Code
  - o Means of egress
  - o Fire Protection and equipment
  - o New detention and correctional occupancies
- Standards and Supplements for Detention and Correctional Facilities (Accreditation Standards)
- Mississippi Department of Correction Mandates
- Standards for Operation of a Secure Juvenile Detention Facility
- Juvenile Federal Performance-Based Standards
- Americans with Disabilities Act and Architectural Barriers Act Accessibility Guidelines
- ICC/ANSI A117.1 – 2003 Accessible and Usable Buildings and Facilities
- National Fire Protection Association, Prisons and Jails

2. Schematic design phase develops for review and discussion with the in-user as follows:

- Schematic site plan
- Schematic floor plans
- Schematic elevations

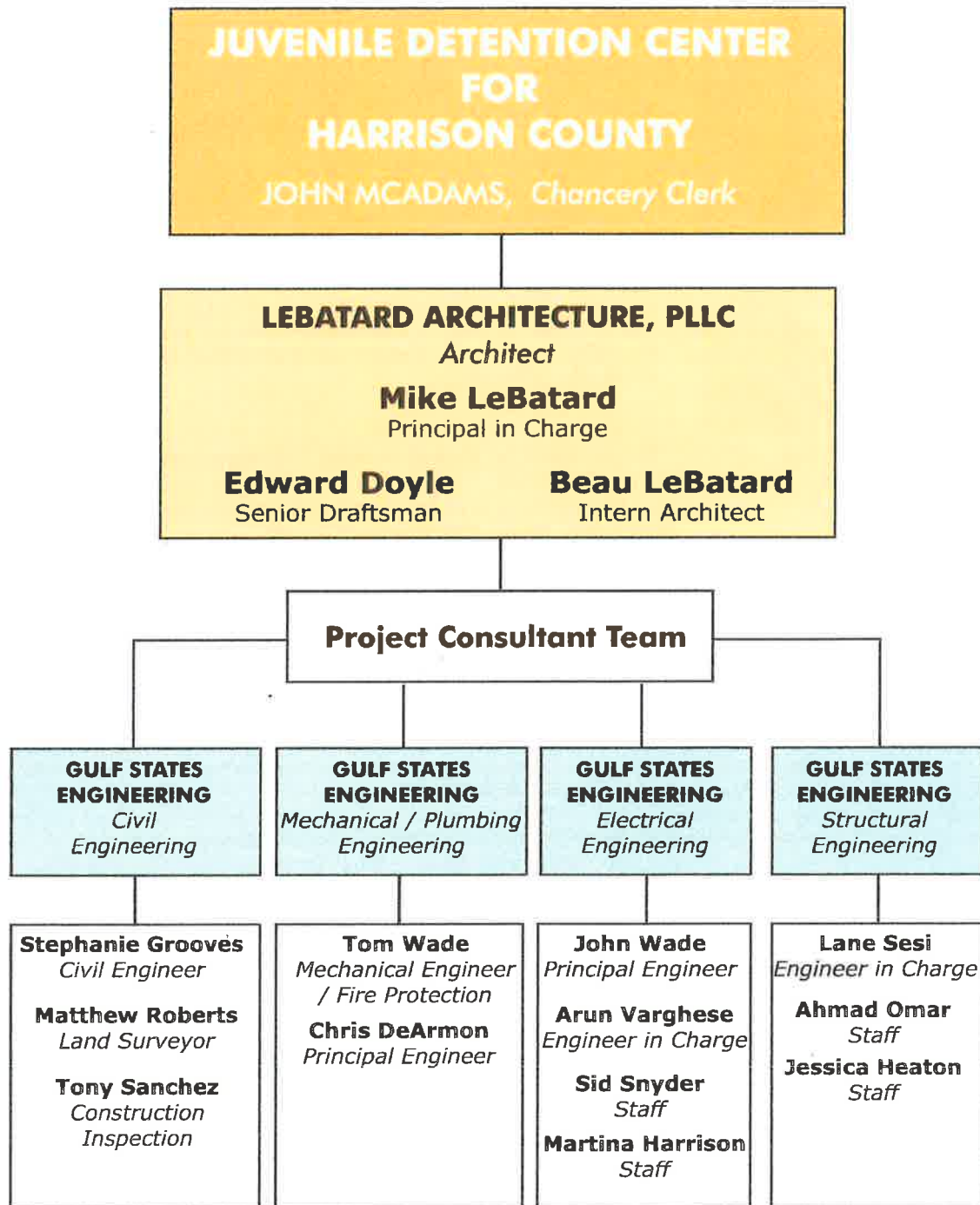
3. Design Development includes the following:

- Construction cost probability study is performed based on similar facilities and type cost per-square foot to establish a probable cost to construct desired facility. The Owner's budget is then reviewed and compared against the established budget.
- Construction estimates become fluid as various phases proceed (Design Development and Construction Documents). With each phase more detailed probability of cost is ascertained and the owner is updated.



# Organizational Chart

---



**Education**

**Marion Military Institute**  
1972

**Mississippi Gulf Coast Community College**  
1975

**Apprentice Architect**  
1989

**Housing Authority Projects**

**Hope VI –Mater Planning and Design**  
Mobile, AL

**FEMA / MEMA Projects**

**Moss Pont Police Station**  
Moss Point, MS

**Biloxi Fuel Bait and Tackle Building**  
Biloxi, MS

**Lighthouse Fishing Dock Harbormaster Facility**  
Biloxi, Mississippi

**Lighthouse Fishing Dock Restroom Facilities**  
Biloxi, Ms

**D’Anella Ball Park and Facilities**  
Biloxi, MS

**Hiller Park Offices and Restrooms**  
Biloxi, MS

**Popps Ferry Soccer Facilities**  
Biloxi, MS

**Todd Miguez Ball Park and Facilities**  
Biloxi, MS



**Role on this project:**  
*Intern Architect*

**Beau S. LeBatard**, NCARB, Associate AIA  
LeBatard Architecture, PLLC  
Biloxi, MS

### **Background**

Beau serves as Intern Architect at LeBatard Architect PLLC, and is skilled in presentation renderings and design. Beau's responsibilities for projects include conceptual design, preparing presentations, approving submittals and shop drawings as well as preparing construction documents.

Beau began his architectural career by working summers at local architecture firms while attending high school. As his passion grew for architecture he attended Mississippi State University where he received a Bachelor's of Architecture from MSU's College of Architecture, Art, and Design. He is currently in progress of taking the Architectural Licensure Exams. Beau has over 6 years of architectural design experience and 10 years of drafting experience. Beau has experience in residential design, as well as commercial and planning projects. His knowledge of graphic renderings brings clients' vision to realization.

### **FEMA / MEMA Projects**

**Moss Pont Police Station**  
*Moss Point, MS*

**Biloxi Fuel Bait and Tackle Building**  
*Biloxi, MS*

**Lighthouse Fishing Dock  
Harbormaster Facility**  
*Biloxi, Mississippi*

**Lighthouse Fishing Dock  
Restroom Facilities**  
*Biloxi, Ms*

**D'Anella Ball Park and Facilities**  
*Biloxi, MS*

**Hiller Park Offices and Restrooms**  
*Biloxi, MS*

**Popps Ferry Soccer Facilities**  
*Biloxi, MS*

**Todd Miguez Ball Park  
and Facilities**  
*Biloxi, MS*

**World War II Hangar**  
*Gulfport, MS*

## Consultants

---

### Civil Engineering

Gulf States Engineering  
*Gulfport, MS*

### Mechanical Engineering

Gulf States Engineering  
*Gulfport, MS*

### Structural Engineering

Gulf States Engineering  
*Gulfport, MS*

### Electrical Engineering

Gulf States Engineering  
*Gulfport, MS*



### **Education**

Bachelor of Science  
Civil Engineering  
Environmental Engineering  
Certificate  
University of Alabama

### **Registrations / Certifications**

Professional Engineer  
Alabama, Florida, Mississippi,  
Louisiana and Kentucky

USGBC LEED AP

## **Stephanie Groves, P.E., LEED AP Civil Engineer**

---

### **Accountability and General Experience**

Ms. Groves has over 21 years of experience in all phases of civil engineering design, permitting and project management associated with projects for residential, commercial, industrial and municipal developments.

Her experience includes roadway and pavement design, stormwater collection and management systems, water and wastewater distribution and transmission systems, construction cost analysis, construction observation and construction management.

Ms. Groves received a Bachelor of Science Degree in Civil Engineering with a Certificate in Environmental Engineering from the University of Alabama in Tuscaloosa, AL. She is a registered Professional Engineer in Alabama, Florida, Mississippi, Louisiana and Kentucky. She is also a LEED Accredited Professional.

As GSE's Civil Department Manager, Ms. Groves' responsibilities include civil design of site improvements for commercial, industrial and municipal developments. Civil designs including paving, stormwater management systems, water distribution systems, wastewater transmission systems, pavement marking and signage. She is also responsible for quality control, permitting, contract administration, construction observation and certification.

### **Representative Experience**

#### ***Civil Department Manager Civil Engineer Gulf States Engineering***

#### ***Centennial Plaza - Gulfport, MS***

Design and permitting of civil site improvements for a multi-use development including, hotel, retail, office, educational and residential uses. The design includes site plan, paving and grading, stormwater management system, erosion and sediment control, utility connections and onsite utility design.

#### ***Dairy Queen – Multiple locations in Mobile, AL***

Design and permitting of civil site improvements for a drive-thru restaurant including, site plan, paving and grading, stormwater management system, utility connections, erosion and sediment control and construction best management practices plan (CBMPP). One of the projects included a driveway connection to an Alabama Department of Transportation road. This required additional coordination and permitting.

#### ***Gulf Coast Community Federal Credit Union - Gulfport and D'Iberville, MS***

Design and permitting of civil site improvements for bank including, site plan, paving and grading, stormwater management system, utility connections, erosion and sediment control and stormwater pollution prevention plan (SWPPP).

#### ***Walk-on's Restaurant – Multiple locations including Houma and Lake Charles, LA and Lubbock, TX***

Design of civil site improvements for a restaurant including, site plan, paving and grading, stormwater management system and utility connections.

#### ***Community Bank Coast - Mobile, AL***

Design and permitting of civil site improvements for a bank including, site plan, paving and grading, stormwater management system, utility connections, erosion and sediment control and construction best management practices plan (CBMPP). Also responsible for construction observation and certification.



CONSULTING ENGINEERS  
CREATING SOLUTIONS



### **Registrations / Certifications**

Spanish Speaker (Fluent)  
Alabama Home Builder License  
OSHA 30 Construction Certification  
Hazwoper 40 Certification  
DOT Hazmat Cert  
Lead Paint Abatement Certification

## **Tony Sanchez** **Construction Management/Administration**

---

### **Accountability and General Experience**

As an On-Site Representative, Mr. Sanchez has over 11 years of professional experience. Mr. Sanchez has served as a Construction Assistant, Project Manager, Scheduler, Estimator, and Superintendent both with Gulf States Engineering and previous employers.

Tony's major responsibilities include the following:

- Assist GC and CM to be compliant with city and state permit requirements.
- Assist planning and coordinating pre-construction meetings and provide engineering related agenda items
- Work with the CM and Engineering Leads to ensure compliance with the construction contract by continuously monitoring and reporting on work completed or in progress
- Prepare a daily report regarding on-site activities and outstanding concerns
- Maintain a deficiency log to track issues in the field through resolution
- Facilitate discussion between Engineering Team and GC to assure all RFI and Construction Submittals are completed prior to causing construction delays.
- Assist the GC and CM to identify safety concerns.
- Assist CM to verify all third party inspections, testing, and surveys are performed in compliance with the Contract Documents - Monitor and help coordinate these activities if needed.
- Assist planning and coordination of site meetings and inspections of GSE Leads to the site.

### **Representative Experience**

#### **Construction Assistant Gulf States Engineering**

##### ***Bilstein Cold Rolled Steel – Bowling Green KY***

On-site representative responsible for inspecting construction work from all trades on the site. This is done by conducting numerous rounds per day to inspect for the quality and control of the work as per the drawings and specifications required by the engineers. Comprehensive report of the day's activities were completed daily including taking pictures, inspections checklists, and open items requiring further discussion. Responsibilities included maintaining working relationship with the General Contractor, sub-contractors, and Construction Manager on site.

### **Previous Experience**

#### **Project Manager Property Masters South Alabama**

As a Project Manager, I inspected and estimated work of real estate owned (REO) properties of bank organizations. Once the estimate process was approved, I managed the work throughout the project, until completion. The trades involved were, roofing, structure, electrical, and mechanical. I was required to document and take photographs for the specified work, before and after.

#### **General Contractor C Sharpe**

As Project Manager, I managed large building projects needing building coatings, roofing, and concrete repairs and restorations. Most of this work was for beach condominiums which included concrete work on balconies and parking lot garages.



CONSULTING ENGINEERS  
CREATING SOLUTIONS



## **Chris DeArmon, P.E.** **Mechanical Engineering Lead/Project Manager**

---

### **Accountability and General Experience**

Mr. DeArmon has over 23 years' experience as a consulting engineer in HVAC and plumbing design. Responsibilities include HVAC and plumbing systems design, document preparation and construction administration. Engineering design service has been performed for over 700 commercial, industrial, institutional, educational, and governmental projects.

Mr. DeArmon's responsibilities include HVAC and plumbing design, project management, supervision of other engineers, as well as coordination with other disciplines in order to ensure accuracy and coordination of drawings. He is experienced in software packages including head load calculations, building energy modeling, life cycle cost analysis, systems comparisons and system value engineering.

### **Representative Experience**

#### ***Mechanical Department Manager Mechanical Engineer Gulf States Engineering***

##### ***AIS Instruction Facility – Stennis Space Center , MS***

System design consisted of VRF DX systems with DOAS. Performed energy modeling to ensure EPAAct 2005 requirements. Provided submission of HVAC and plumbing system information to USGBC to secure building LEED Gold certification.

##### ***Building 9322 NAVO – Stennis Space Center , MS***

Design consisted of replacing existing compressed air system with new system utilizing energy efficient variable speed screw compressors and aluminum piping.

##### ***Tulane University - Biloxi Campus – Biloxi, MS***

Coordinated with building HVAC system commissioning agent to ensure proper chilled water and VAV air handler system performance. Provided submission of HVAC and plumbing system information to USGBC to secure building LEED Gold certification.

##### ***Tilted Kilt Restaurant –Gonzales, LA***

Design of restaurant HVAC system using VFR DX heat pump systems with DOAS. Design of building plumbing systems.

### **Previous Experience**

#### ***Mechanical Engineer Project Manager Huseman and Associates***

##### ***ABP – SouthWest Pass, LA***

Project manager for renovation of an offshore housing facility. Design, coordinated and produced construction document to install HVAC to mitigate severe moisture infiltration of facility. System design consisted of VRF DX systems with DOAS.

##### ***Holy Cross Redevelopment – New Orleans, LA***

Design of high efficiency building HVAC system using magnetic bearing chillers with VAV air handlers. Water for heating systems was designed utilizing solar collectors. Building systems were computer modeled prior to construction to ensure design would achieve Net Zero building certification

##### ***Xavier University – New Orleans, LA***

Design of lecture classroom building HVAC using high efficiency split system DX units. <sup>27</sup> Provided submission of HVAC and plumbing system information to USGBC to secure building LEED Silver certification.

### **Education**

Bachelor of Science  
Mechanical Engineering  
University of South Alabama

### **Registrations/ Certifications**

Alabama, Florida, Arkansas,  
Mississippi



CONNECTING ENGINEERS  
CREATING SOLUTIONS



## **S. Lane Sesi, PE** **Structural Engineer/Principal Project Manager**

### **Accountability and General Experience**

Vice President and Director of Project Management, Lane holds bachelor degrees in construction sciences from the University of Southern Mississippi and civil engineering from the University of South Alabama. Lane has managed the design of several high profile projects for heavy industrial and manufacturing clients as well as large commercial structures in hurricane prone areas.

Lane has served as Project Manager and/or Structural Engineering Lead for nearly 2 billion dollars in capital construction cost over the last 5 years. His expertise in both the project design and construction phases of large projects is a benefit noted by many clients.

### **Representative Experience**

#### **Principal Project Manager** **Structural Engineer** **Gulf States Engineering**

##### **Orleans Parish Temporary Inmate Housing Facility – New Orleans, LA**

Structural engineer peer review for a 500 bed inmate housing facility built in New Orleans, LA which was funded by FEMA. The 40,000 square foot medium security facility consisted of 4 identical inmate buildings, a two story visitation and staff building, and outside recreational areas. Scope of work included project management for civil, and survey coordination along with structural, fire protection, electrical, and mechanical engineering design.

##### **Shore Oaks Center and Restaurant Development – Daphne, AL**

Project manager and lead structural engineer for all three phases of the retail and restaurant development constructed in Daphne, AL. The buildings total approximately 15,000 square feet and consisted of masonry, structural steel, and structural light gage systems. Build-outs for the development included Moe's Southwest Grill, Hibachi Express, and Taziki's Mediterranean Cafe.

##### **Tacky Jack's Restaurant – Orange Beach, AL**

Lead structural engineer for the approximate 9,000 square foot addition to Tacky Jacks in Orange Beach, AL. The three level building expansion is supported on precast concrete piling and implements numerous structural systems including moment resisting steel frames, masonry, light gage metal studs and timber.

##### **Office Building for Truland Homes – Daphne, AL**

Structural Engineer of record for the new \$4.5M two story command center and show room for Truland Homes. GSE provided all engineering design for the future home office for Truland Homes. The design consists of structural steel framing with metal stud shear and curtain walls. The metal studs are integrated into the steel framing as shear walls in order to eliminate heavy gage bracing systems and moment frames. This unique configuration results in a cost efficient approach to designing the structure for wind speeds in excess of 160 mph.

##### **Marquis Apartments – New Orleans, LA**

Structural Lead for a new \$55M luxury apartment complex comprising of three 5-story wood framed structures with approximately 250 units. The apartments, built on Poydras, the project was listed as part of "The Year's Best Architecture" by *myNewOrleans.com*

##### **Hancock Bank – Gulfport, MS**

Project manager and structural lead for the 7 million dollar expansion and restoration of an approximately 80 year old office building in (Gulfport, MS). The project entailed concrete restoration and adjoining new steel framed construction to existing concrete and masonry.

##### **U.S. Post Office – Pascagoula and Pass Christian, Mississippi**

Project manager and structural lead for 2 post offices built to replace severely damaged structures following Hurricane Katrina.

### **Education**

Bachelor of Science  
Civil Engineering  
University of South Alabama

Bachelor of Science  
Building & Construction Sciences  
Univ. of Southern Mississippi

### **Professional Engineer**

Alabama  
Mississippi  
Florida  
Kentucky  
Tennessee



CONSULTING ENGINEERS  
CREATING SOLUTIONS





## **John T. Wade, P.E., F.P.E.** **Principal Engineer**

---

### **Accountability and General Experience**

As Mechanical and Fire Protection Engineer for Gulf States Engineering, Mr. Wade's experience in engineering design for commercial, general manufacturing, and heavy industry is considerable and current. Mr. Wade has 20 years of professional experience in the design and engineering of mechanical and fire protection systems. This includes process equipment design and specification, HVAC and plumbing design, heat transfer and thermal analysis, pump and piping design, fire suppression system and fire alarm system design, pneumatic conveying and dust collection system design, mechanism design, and project management.

Mr. Wade received a Bachelor of Science Degree in Mechanical Engineering from Mississippi State University, Starkville and a Master's Degree in Fire Protection Engineering at the University of Maryland. He is a registered Professional Engineer in multiple states.

Before joining Gulf States Engineering in 2000, Mr. Wade served as Project Engineer on multi-discipline assignments ranging from small concept studies to major design and engineering projects.

### **Education**

Bachelor of Science  
Mechanical Engineering  
Mississippi State University

Master of Engineering  
Fire Protection Engineering  
University of Maryland

### **Registrations/Certifications**

Professional Engineering License  
Alabama, Arizona, Arkansas, Colorado,  
Connecticut, Florida, Georgia, Kentucky,  
Louisiana, Mississippi, Maryland,  
Massachusetts, Michigan, Missouri, New  
York, North Carolina, South Carolina,  
Oklahoma, Tennessee, Virginia

Dual Registered Fire Protection and  
Mechanical Engineer

Principal Member of the NFPA Technical  
Committee On Fire Fighter Professional  
Qualifications

LEED Accredited Design Professional

Coast Guard Authorized Certifying Entity  
for Facility Vapor Control Systems

Certified Volunteer Fire Fighter  
(Mississippi)

### **Publications**

Contributor to NFPA 1001, NFPA 1002,  
NFP 1003, and NFPA 1005

### **Representative Experience**

#### **Principal Engineer**

#### **Gulf States Engineering, Inc.**

#### **Harrison County Adult Detention Center – Harrison County, MS**

Evaluated life safety and HVAC processes while designing a custom touch screen control system for building automation and locking at the existing facility.

#### **Alabama Supercomputer Center**

Clean agent fire suppression system design for a supercomputer center. Additional design for addressable fire alarm system to control the clean agent system.

#### **Blackwater River Correctional Facility – Milton, FL**

Engineer of record for the fire suppression systems

#### **Mobile Container Terminal**

HVAC, Plumbing, and Fire Alarm design for a new 2-story office building and 2-story maintenance office and repair building. Facility included multi-zone VAV design with DDC HVAC controls. Role: Mechanical and Fire Protection Engineer.

#### **Little Rock Air Force Base – Little Rock, AR**

Design of all sprinkler, fire alarm, mass notification, and passive fire protection for a 30,000 square foot new construction of the Security Forces Operations Facility.

#### **Semmes Multipurpose Building**

HVAC, plumbing, fire alarm, sprinkler design, and project management for a new multipurpose gymnasium/auditorium.

#### **Allentown Multipurpose Building**

HVAC, plumbing, fire alarm, sprinkler design, and project management for a new multipurpose gymnasium/auditorium.

#### **St. Lukes Episcopal School – Mobile, AL**

HVAC, plumbing, fire alarm and sprinkler design for a renovation and new construction for a new school campus facility.

#### **Hurlburt Field - Pensacola, FL**

Renovation/Upgrade to 5 separate Hangars at Hurlburt Field in Pensacola, Florida. GSE provided the design of repairs and correction of existing fire protection systems in 5 separate hangars. Included repairing and/or replacing overhead sprinkler heads, piping, fire alarm devices, replacing



**G S E**  
CONSULTING ENGINEERS  
CREATING SOLUTIONS

## Rates

---

Gulf States  
Engineering

### **Rates Schedule**

The following rates are effective January 16, 2013:

Principal Engineer	\$160.00/hr
Discipline Lead Engineer	\$140.00/hr
Professional Licensed Engineer	\$120.00/hr
Associate Engineer I	\$85.00/hr
Associate Engineer II	\$95.00/hr
Senior Designer (>10 years experience)	\$85.00/hr
Designer	\$75.00/hr
Drafter	\$70.00/hr
Secretarial	\$55.00/hr
Principal Surveyor	\$120.00/hr
Professional Licensed Surveyor	\$95.00/hr
Senior Surveyor (>10 years experience)	\$75.00/hr
Associate Surveyor	\$65.00/hr
Survey Assistant	\$55.00/hr
Leica Scanstation	\$125.00/hr
Code Compliance Specialist	\$105.00/hr

Expenses are billed at cost plus 10%.

## Experience

---

As of this date, our team has provided architectural and engineering design services for a number of similar products with exceptional delivery.

LeBatard Architecture has assisted Judge Alfonso on many occasions to develop the project needs for a New Youth Detention Center as well as help develop preliminary budget cost for the project.

LeBatard Architecture is well knowledgeable of the needs and requirements for a New Harrison County Youth detention Center.

Please see the attached Projects in this section

### ***Selected Work***

#### **LeBatard Architecture**

##### **Moss Point Police Station and Jail**

*Moss Point, MS*

#### **Gulf South Engineering**

##### **Temporary Inmate Housing**

*Orleans Parish, LA*

##### **Portable Jails**

*Plaquemines Parsih*

##### **Adult Detention Center**

*Harrison County, MS*

##### **Blackwater River**

*Milton, FL*

##### **Little Rock Airforce Base Securitiy Forces**

*Little Rock, AR*



## **Blackwater River Correctional Facility** *Milton, FL*

---

**Description:** Florida Department of Corrections enlisted GSE as the Engineer of record for the fire suppression systems for the new Blackwater River Correctional Facility in Milton, FL. The facility has two open bay housing units and four cell housing units with a total maximum capacity of 2,000 inmates.



## **Little Rock AFB Security Forces** *Little Rock, AR*

---

**Description:** GSE provided sprinkler, fire alarm, mass notification and passive fire protection (Egress Design) for a 30,000 square foot new construction of the Security Forces Operations Facility at Little Rock AFB



## Letters of Reference

---

# OHR-O'KEEFE MUSEUM OF ART

March 22, 2016

**RE: LETTER OF RECOMMENDATION**

TO WHOM IT MAY CONCERN:

I am pleased to write this letter in recommendation of Michael A. LeBatard, Architect, and LDJ Architecture PLLC.


I first became acquainted with Michael and his firm in 2013, when I accepted the position as Executive Director of the Ohr-O'Keefe Museum of Art. At that time Michael and LDJ Architecture were providing construction observation, construction administration, and oversight of the Architects of Record during the construction of the Ohr Pods. It soon became evident to me why Michael had been hired by the Board of Trustees for this assignment.

When the Pod construction was complete in 2014 and Michael's professional services were no longer required, I quickly realized how much I had come to rely on Michael's professional knowledge and expertise in dealing with several other campus situations that were out of his scope of contracted services for which he had been hired. It was at that point, that I realized what an asset Michael would be to the Museum and to me in dealing with a multitude of architecturally related issues. I was elated when Michael was appointed to the Board of Trustees in late-2014, and accepted appointment to the campus construction, maintenance and design committee.

Michael currently serves as liaison between the Museum and the City of Biloxi for design and construction. He also has provided master planning and design of the Tri-Centennial Park in conjunction with the City of Biloxi. He has provided master planning for the campus and has assisted in setting estimates and given advice in securing Tideland Grants for the improvement of the campus grounds.

Michael has not failed to answer the call when needed. Most recently, the Museum experienced heavy rain leakage and flooding at one of the buildings, as I was out of town, I turned to Michael for his assistance. Even though it was Christmas Eve, Michael was there to intercede and handle the situation in my absence. It is this type of professionalism and commitment of Michael that gives me no hesitation in highly recommending him and his firm for any architectural projects that they are considered for hire.

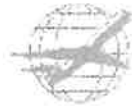
Sincerely,



Kevin O'Brien  
Executive Director

## Letters of Reference

---



### Gulfport-Biloxi International Airport

March 22, 2016

To Whom It May Concern:

I am writing this letter as a reference for Michael A. LeBatard, Architect, who has served the Gulfport-Biloxi Regional Airport Authority in the capacity of local architectural consultant since 2003.

Since my tenure as Executive Director of the airport in 2012, Michael and LDI Architecture have shown outstanding professionalism and accountability for all projects in which they have been involved. Projects and services provided by this firm, since my tenure, have included very basic and minimal to the more complicated historic renovation of the 58,000 square foot World War II Hangar that was just completed ahead of schedule and under budget. At present, he is currently performing an independent fee analysis for architectural services for other consultants that will be performing work at the airport.

Historically, Michael and LDI Architecture have provided many additional professional services to the airport, including interior design. Michael has always made himself easily accessible to communications and responding on site as necessary, to any needs and requests of the airport.

Additionally, Michael has provided architectural services for the airport's sound mitigation program since beginning in 2004. Of note, LDI Architecture also designed an aesthetically pleasing and functional corporate hangar that is located on the airport grounds.

LDI Architecture PLLC and Michael A. LeBatard, Architectural are responsive to the needs of their clients. Thank you for your attention.

Sincerely,

Clay Williams  
Executive Director

## Contact Information

---



*Biloxi Office*

Thank you for considering LeBatard Architecture, PLLC. We look forward to the opportunity of presenting our qualifications in person. We are confident that our design process can facilitate the successful realization of your project goals. Once again, thank you for this opportunity and do not hesitate to contact us if there is anything else we can do.

**Contact Information:  
Mike LeBatard, NCARB, AIA**

2554 Beach Blvd.  
Suite D  
Biloxi, MS 39531  
T: 228.388.5099  
F: 228.388.7088