

Smith-Doyle Contractors, Inc./James S. Langford, Architect Team

Request For Qualifications For:

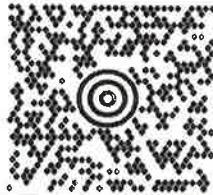
Professional Services To Design And Construct A

Juvenile Detention Center in Harrison County, Mississippi

RECEIVED JUN 26 2017 9:55 AM
Baby Green

JAMES S. LANGFORD ARCHITECT 5 LBS 1 OF 1
901-457-7688
SMITH-DOYLE CONTRACTORS/JAMES Langford DWT: 13,10,6
134 W. SOUTH STREET
COLLIERVILLE TN 38017

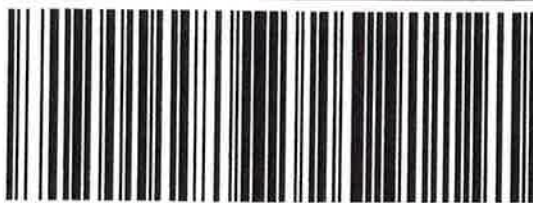
SHIP TO:
C/O COUNTY CHANCERY CLERK'S OFFICE
228-865-4028
HARRISON COUNTY BOARD OF SUPERVISORS
FIRST JUDICIAL DISTRICT COURTHOUSE
1801 23RD AVENUE
GULFPORT MS 39502



MS 395 0-01



UPS NEXT DAY AIR SAVER 1P
TRACKING #: 1Z 9V5 F58 13 9389 1702



BILLING: P/P

Trx Ref No.: 7244

XOL 17.05.01 NV45 87.0A 04/2017



6/23/2017

Airbill: 1Z9V5F581393891702

Smith-Doyle Contractors, Inc./James S. Langford, Architect Team

Request For Qualifications For:

Professional Services To Design And Construct A

Juvenile Detention Center in Harrison County, Mississippi

nt

1-800-742-5877) or visit UPS.com®.

TI

Harrison County Board of Supervisors
c/o Harrison County Chancery Clerk's Office
First Judicial District Courthouse
1801 23rd Avenue
Gulfport, MS 39502



June 23, 2017

Harrison County Board of Supervisors
c/o Harrison County Chancery Clerk's Office
First Judicial District Courthouse
1801 23rd Avenue
Gulfport, MS 39502

Re: RFQ for Professional Services to Design and Construct a Juvenile Detention Center

Dear Supervisors,

This submittal is different. Mr. Jody Webster, Purchase Clerk, indicated in an e-mail with Mr. Robert Barrett, a member of our Design/Construction Management-advisor team, we could submit our unique teaming approach to design and build the Harrison County Juvenile Facility.

Please note this unique teaming approach is comprised of Smith-Doyle Contractors, Inc (SDC) (Cordova, TN) and James Suzuki Langford, Architect (JSL) (Collierville, TN). We are known as the SouthBuild Team (www.SouthBuild.com) in other states for ease of memory; however, due to Mississippi requirements, we identify ourselves individually in Mississippi. The SDC/JSL team specializes exclusively in county level justice projects. We have designed and construction managed more than \$400,000,000 worth of justice facilities with a 100% record of staying within established budgets—with all savings remaining with the client.

This is accomplished beginning with our Programming/Design/Budgeting Work Session used at the inception of a project. The Work Session is normally conducted in a three to five day session at the client's location. We believe a three to four day session will be required for Harrison County. We would spend a portion of Day 1 in a group session, interviewing key individuals and developing a specific solution. On Day 2, we will complete definition of a specific CADD floor plan, site plan, conduct value analysis and begin the quantities takeoff/data entry. Day 3, and possibly Day 4, are used for finalizing the plans and costing process. A final Schematic Floor Plan, Site Plan, Exterior View and Project Budget would be presented on the last day. We have never exceeded this budget—again, with all savings remaining with the owner.

Having designed and construction managed several juvenile detention facilities, we have completed a project very similar in scope to Harrison County's possible scope—Washington County AR Juvenile Justice Center. The project is the first featured project in the accompanying submittal.

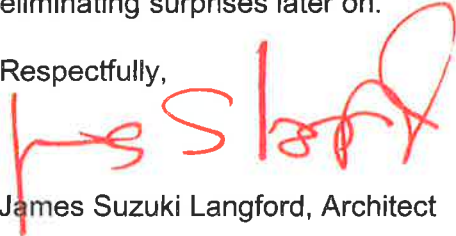
The following responds specifically to the items to be addressed in the RFQ:

1. **Qualifications List of Staff:** The resumes contained in the accompanying submittal identify members of the Design and Construction Management team. All individuals identified have been with their respective firms for over a decade and have been involved with most of the team's justice projects, including the Washington County project. This encompasses thousands of detention beds and, again, in excess of \$400,000,000 worth of construction.

2. **Experience Information:** The accompanying submittal contains a representative group of justice projects. The team has been involved with planning, design, and/or construction of county level justice facilities in Mississippi, Tennessee, Arkansas, Oklahoma, Louisiana, and Alabama.
3. **Capacity of Performance:** Since the team specializes in county level justice projects, any of these individuals can execute the design and construction management effectively. Actual assigned personnel will depend on the county's schedule. Specifically, Mr. Jim Langford (licensed in Mississippi) would be the Architect of Record, and Mr. Don Abernathy would be the Construction Executive. Normally, the design process requires four to six months, depending on client availability and agency review times. Construction would then take approximately twelve to eighteen months, depending on weather.

We would appreciate the opportunity to further explain our unique approach. We appreciate the opportunity to submit this proposal to Harrison County. We believe we have a unique process for providing comprehensive services for county justice facilities—one that defines design and cost early, eliminating surprises later on.

Respectfully,



James Suzuki Langford, Architect

JSL/jd

cc: Robert Barrett

Smith-Doyle Contractors / James S. Langford TEAM

Construction Manager

Mississippi Architect Lic. # 2597

(Known in other states as the SouthBuild TEAM)



Over 19 years...

**Over \$350 Million
Contracted...**

**Never Over
Budget!**

The Langford / SDC Team is based in Collierville, Tennessee, existing to serve the southern corrections market in a comprehensive manner. Langford / SDC is especially targeted towards jails. Langford / SDC owners are experienced with corrections planning, design and construction in Tennessee, Mississippi, Oklahoma and Arkansas with more than \$200,000,000.00 worth of design and construction completed and over \$50,000,000.00 worth in process.

The Langford / SDC Team offers:

- ✓ Planning/Master Planning
 - ✓ Design/Construction Management
- The Langford / SDC Team offers through alliances:***
- ✓ Financing
 - ✓ Targeted Privatized Management
 - ✓ Detention Security Equipment
 - ✓ Staff Training

✓ **Langford / SDC Team**
(Company Structure)

Companies owned by Smith-Doyle Contractors, Inc. and James S. Langford, Architect.

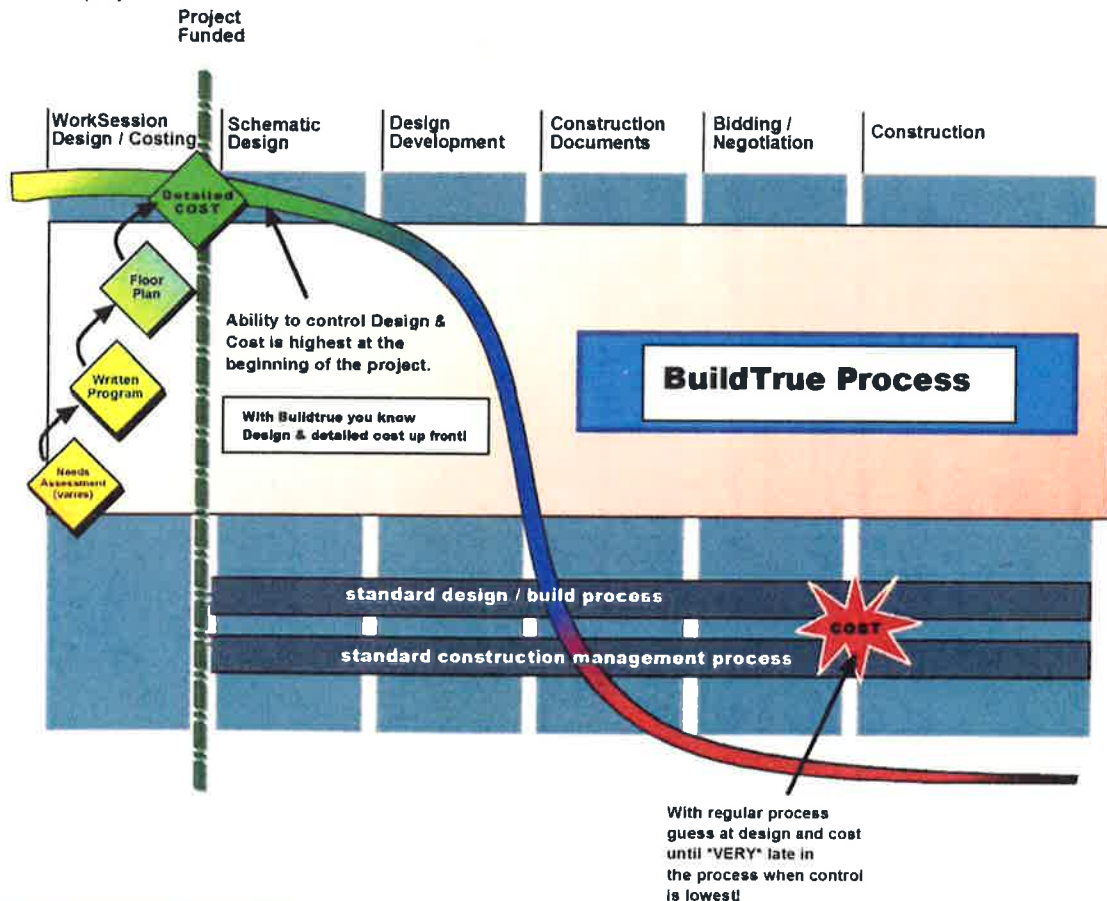
The Langford / SDC team focuses exclusively on the "rural" detention or justice market--10 bed to 600+ bed jails, juvenile facilities, courts buildings and justice centers. Langford / SDC pursues no other type projects.

The Langford / SDC team focuses on the "rural" justice market initially having begun in the south. We have found the management philosophy and funding abilities toward "jails" similar in most rural communities. The attitudes and resources are different from urban facilities and from places like California and New York.

The Langford / SDC team offers comprehensive planning, design and construction services in a special modified construction management format. We are able to define design and cost at the onset of a project. We have never exceeded a budget.

The Langford / SDC team uses a unique "work session" format with the client generating a custom design within a set budget. Again, we have never exceeded the budget. A rare statement for a detention facility.

Another key aspect of the Langford / SDC team is that we are able to control the entire process including having a full time person on site at all times--at no extra project cost.



Special Expertise

Langford / SDC focuses exclusively on county level detention projects.

Ownership

James S. Langford is licensed in: Alabama (5358), Arkansas (3021), Georgia (9736), Kansas (4857), Kentucky (4724), Louisiana (6036), Mississippi (2597), Montana (12368), Oklahoma (4442), Tennessee (15694), Texas (17677), Virginia (0401-011744), Indiana, and Michigan.

SDC is licensed in Tennessee, Arkansas, Missouri, Kansas, Oklahoma, Texas, Mississippi, Nebraska, Iowa, Louisiana, Indiana, Ohio, Kentucky, Virginia, Georgia, South Carolina, Florida, Alabama, and Montana.

BuildTrue Delivery Process

The BuildTrue process begins with an experienced designer and builder who are experienced with each other and the building type. The BuildTrue process features a work session format to define the design and budget in the initial days of the project. A work product of the work session is to create a template and budget template which are then used as points of reference during the remainder of the project.

Maintain a Budget

Langford / SDC consistently maintains budget due to its process. We have developed a compressed work session format where a specific Program, Design and Definite Cost can be defined. We provide this during our Work Session, which lasts 4 to 5 days—occurring normally within the first weeks of a project. We bid all trades publicly with the Owner present. All savings return to the Owner.

True Long Term Cost to the Public

80% of long-term cost is in staffing, not in construction cost. We have extensive experience analyzing short and long term staff costs based on design configurations.

Team Approach

The multi-discipline capability of Langford / SDC integrates the several professional design and construction disciplines into a single, cohesive team, which facilitates coordination and stimulates creativity and innovation. Early involvement of all disciplines respects the importance of understanding the client's needs and desires, and provides the best means available to translate this information into a properly responsive product.

Project Control/Quality Control

Langford / SDC's ability to provide accurate drawings, specifications, cost estimates and schedules is shown through previous experience. The final costs on these projects have been within budget and have not required additional funds. This is due to our ability to track cost and maintain project control. Producing projects on time is equally important to producing them within budget. The budget is affected if the documents are not on schedule, which causes projects to miss deadlines.

Detailed cost accountings are maintained on completed projects to assist in preparing estimates. A "cost template" and detailed quantity "take-offs" are prepared during the Work Session. These are verified during design development and construction document phases. These estimates are prepared and reviewed jointly by the design and construction or construction management teams throughout the project. Once construction begins, costs, including contract changes, are monitored regularly. Shop drawings, samples and pay requests are processed promptly. Langford / SDC works with the various contractors and/or sub-contractors in developing and implementing a construction management system with provisions for cost control accounting, cash requirements, forecasting, budget updating, and financial status reporting summarizing the critical aspects of the budget-schedule relationship.

Tracking Construction Cost During the Design Process

We monitor costs at all stages of design. As the design process becomes more detailed, our verification of expected costs also becomes more detailed. The time of expected construction is equally critical and we recommend anticipated cost escalation factors based on current and expected bidding and construction times. If our tracking methods indicate expected construction costs are increasing above budget during design, we establish design alternatives to get the project costs within budget and present them to the owner for approval to change the design. This can be accomplished in a timely manner so that the schedule is not affected.

Planning and “WorkSession” Process

The work session process emphasizes several “best practices” of the industry. It employs a concentrated work session format with the client to allow total communication between different arms of the client, the design and construction team. Invariably clients are more comfortable with decisions and more willing to make compromises based on direct participation.

The format also emphasizes a complete range of expertise brought in at the initial concept development. Members of the team are comprised of planners, designers and builders providing input regarding demographics, design details and constructability simultaneously. This allows for true comprehensive cost management where it is most effective – during the first 20% of the planning and design process.

Finally a definite Construction Budget is defined, allowing the client to know the construction cost will not exceed the defined amount unless the scope is changed. This process moves the client through the planning process and cost estimation in a matter of days rather than months.

Langford / SDC has developed a four part process intended to provide key data for local government planning committees. The four parts are Needs Assessment, Facility Programming, Concept Design and Definite Construction Budget.

Needs Assessment

This component, taking three to four days, reviews demographic statistics for the county and the jail facility to project future bed needs. Statistics taken into account are inmate growth, county population growth, average daily jail population, arrest patterns, served versus unserved warrants, and unusual and/or unique occurrences.

These statistics are analyzed in a computerized, spreadsheet format. All details are reviewed with key public officials to arrive at a consensus.

Facility Program

This component, taking three to four days, entails meeting with the public and law enforcement staff to define facility goals and space program targets based upon target bed counts.

The facility program is a documented space by space description identifying quantity, sizes, types and furnishings for each major space in a jail facility. At this level, the square footage quantities are taken off and cost targets are matched back against major goals.

Concept Design

This component entails three to four days of sketching based upon the Facility Program establishing a custom concept which fits the needs of that particular county, its chosen site and the management style of its law enforcement staff. The work product is a CADD floor plan and site plan enabling a detailed cost estimate to be taken off.

This concept plan also addresses staffing patterns and future growth options, which address long term costs.

True Construction Budgets

This component entails three to four days of quantity take offs and value engineering, utilizing the Concept Design and Facility Program. The detail quantities take off utilizes a computer program and a substantial history database developed by Langford / SDC.

Also utilized are specialized consultants via phone to provide current cost data for security detention equipment and hardware.

Construction Administration

Under the overall supervision of the Principal-In-Charge, the Project Manager-Design and the Project Manager-Construction follow the project from concept through completion, assuring continuity of contact throughout the project. This continuity remains intact through:

- ❖ Contract negotiation
- ❖ Programming
- ❖ Design and construction document preparation
- ❖ Construction contract administration
- ❖ Shop drawing coordination and review
- ❖ Monthly payment request review and certification
- ❖ Coordination of design changes
- ❖ Clarification of contractor's questions
- ❖ Coordination of engineering inspections
- ❖ Attendance at project coordination meetings
- ❖ Review of contractor's progress schedules
- ❖ Pre-final and final inspections
- ❖ Assembly of project close-out documents, warranties, guarantees, as-built drawings and operating/maintenance manuals
- ❖ Post-occupancy and year-end inspections

Members of the Langford / SDC team have been awarded the Accredited Quality Contractor(AQC) award by Associated Builders and Contractors, Inc. each year since 1993 – the only recipient to do so in West Tennessee. Members of our team have also received an ACE Award from Federal Express Corporation for outstanding performance in the areas of Attitude, Character and Enthusiasm (ACE).

Schedule to Track and Monitor the Design from Beginning to End

We initiate the construction documents phase of production with a list of all required sheets. Our resources are scheduled and manpower is assigned weekly based upon required production schedules, so all work is monitored weekly. With in-house engineering staff, this process is expedited considerably.

- ❖ Team meetings occur weekly, headed by the Project Manager-Design and attended by all appropriate team members.
- ❖ Quality assurance is headed by the Project Manager-Design and is closely monitored at each phase of documentation.
- ❖ Interdisciplinary coordination is maintained by the Project Manager-Design and addressed at weekly team meetings.
- ❖ Code and regulatory agency participation is included in our design process from Schematic Design forward. We like to involve required agencies early so that "surprises" are not likely to occur during the latter phases of design and construction.
- ❖ We typically have a seven (7) working day maximum turn-around on reviews of submittals. We monitor contractor requirements for submitting on time in order to maintain schedule efficiency.
- ❖ Shop inspection will be performed as required by the Project Manager-Design, Project Manager-Construction and/or appropriate engineer. We typically require one week's notification prior to travel to a shop outside driving distance.
- ❖ Special studies can be accomplished as an additional service if required.
- ❖ All codes, regulations and applications, Federal and State requirements will be followed and met.

Cost Controlling Planning & Design

Project cost is largely determined during the very early planning and design phases. Our ability to control project costs is greatly enhanced by having the cost estimating/construction team members from the very beginning of the integrated delivery process.

Operational cost is even more important over the life of the facility than initial capital cost. Langford / SDC has been very successful in minimizing operational costs in detention facilities by the design concept itself. Our detention projects typically utilize design that requires minimal personnel to operate, thus reducing operational costs. Construction materials and systems we utilize have also been key to long term cost savings in detention facilities.

Scheduling

Construction Quality, Budget and Schedule

We use every contractual means available to help keep the project on time and in budget. The team knows how to work with strict schedules and has demonstrated an ability to complete projects within rigid time restraints. Scheduling is given strong emphasis. The team monitors project schedules with weekly review of production budgets. Great pride is taken in meeting a client's schedule. Because most design disciplines are in-house, the team can commit the required team members to a project and maintain a schedule. We are familiar with accelerated projects as well as multiple bid package projects.

Communication Between the Owner, Project Manager, and Other Project Entities

Communication is the key to a successful building project. For this reason, we have set in place one source, the Project Manager, as the "clearinghouse" for all parties involved in the project. It is his responsibility to get information to the party responsible for action as quickly as possible and to ensure an equally quick response. Members of the team have worked as program managers on projects previously and are acutely aware of the importance of this role.

Code Reviews, Including Local and Regulatory Agencies

We include local and other required code and regulatory officials in the process from the earliest design stages through the completion of documents. This is helpful to our design team members as well as the review and inspection officials. When the officials feel they have involvement throughout the project, they are much easier to deal with during construction. This process helps us to anticipate the idiosyncrasies of the officials we will be working with and make it easier for us to deal with them.

Detention Project History as Langford / SDC Team (Partial List)

DeKalb County Jail, TN (DS)
Grainger County Justice Center, TN (NA)
Haywood County Jail, TN (WS, NA, DS)
Henry County Jail, TN (WS / DS)
Johnson County Jail & Sheriff's Office, TN (WS / DS)
Lake County Jail, TN (DS)
Marshall County Jail and Sheriff's Office, TN (WS / NA / DS)
Perry County Jail & Sheriff's Office, TN (WS / DS)
Robertson County Jail, TN (NA / WS / DS)
Roane County Jail, TN (NA / WS / DS)
Scott County Justice Complex, TN (WS / NA / DS)
Tipton County Justice Center, TN (DS)
Wilson County Jail, TN (WS)

Crittenden County Jail, AR (DS)
Ouachita County Jail, AR (WS / DS)
Hot Spring County Jail, AR (WS / DS)
Little River County Jail, AR (WS)
Arkansas County Jail, AR (NA / DS)
Arkansas County Juvenile Facility (NA / WS / DS)
Crawford County, AR (NA)
Lafayette County, AR (WS / DS)
Miller County Law Enforcement Center (Jail), AR (WS / DS)
Saline County Sheriff's Office, AR (WS / NA / DS)
Scott County, AR (WS / NA / DS)
Sevier County, AR (WS / DS)
Washington County Adult Facility, AR (WS / NA / DS)
Washington County Juvenile Justice Center, AR (WS / NA / DS)
White County Law Enforcement Center, AR (WS / NA / DS)
White River Regional Juvenile Detention Center, AR (WS, DS)

Canadian County Jail, OK (WS / DS)
Carter County, OK (NA)
Logan County, OK (WS / DS)
Noble County, OK (WS / DS)
Pawnee County, OK (WS / DS)

Jefferson Davis County Jail, MS (WS / DS)
Greene County Sheriff's Office & Courts, MS (NA)
Sharkey County Jail & Sheriff's Office, MS (NA)
Tippah County Jail, MS (WS)

WS = Work Session | NA = Needs Assessment | DS = Design & Construction Management

<u>Project Name</u> <small>(#) indicates number of repeat projects</small>	Inmates <u>Total /Design</u>	Worksession Budget <u>T.C.C. Total Capitol Cost in MILLIONS</u>	Actual <u>T.C.C. Total Capitol Cost in MILLIONS</u>	Target Completion	Completion <u>Date</u>
AR Arkansas County Jail	143	\$3.40	\$3.37	1997	1997
AR Arkansas County Juvenile Facility	24	\$1.00	\$1.00	1999	1999
AR Crittenden Co. Juv Education Addition	NA	\$1.22	\$1.12	2006	2006
AR Lafayette County Jail	50	\$4.23	\$4.23	2009	2009
AR Miller County Jail (2)	294	\$8.40	\$7.80	2002	2002
AR Ouachita County Jail (4)	130	\$12.18	\$10.28	2009	2009
AR Saline County Jail (3)	182	\$8.15	\$7.92	2006	2006
AR Scott County Jail	76	\$5.95	\$5.25	2008	2008
AR Sevier County Jail	74	\$5.24	\$5.24	2008	2008
AR Washington County Adult Facility (6)	710	\$21.80	\$21.40	2004	2004
AR Washington Co Juvenile Justice Center	36	\$3.10	\$2.80	1999	1999
AR White County Correctional Facility (7)	318	\$15.43	\$14.53	2006	2006
AR White River Regional Juvl Detent Center	24	\$1.10	\$1.10	1999	1999
AR Hot Spring County Jail	50	\$3.96	\$3.86	2010	2010
AR Little River County Jail ??	96	\$6.73		TBD	
AR St. Francis Justice Center (Pending Funding)	260	\$14.4		TBD	
AR Yell County Jail	84	\$6.8	\$6.8	2015	2015
AR Nevada County Jail	80	\$6.2	\$5.9	2015	2015
AR Prairie County Jail	48	\$3.2	\$3.2	2015	2015
AR Crawford County Jail	307	\$19.2	16.2	2016	
AR Polk County Jail	100	\$9.8		2017	
AR Conway County Jail	60	\$7.7		2016	
AR Marion County Jail	92	\$7.8		2017	
AR Lawrence County Jail	100	\$8.4		TBD	
AR Franklin County Jail	92	\$8.7			2018

(x) Number indicates the number of projects that we have done for the county.

<u>Project Name</u> <small>(#) indicates number of repeat projects</small>	Inmates <u>Total /Design</u>	Worksession Budget <u>T.C.C. Total Capitol Cost in MILLIONS</u>	Actual <u>T.C.C. Total Capitol Cost In MILLIONS</u>	Target Completion	Completion <u>Date</u>
TN DeKalb County Jail - Phase I	46	\$1.40	\$1.24	2001	2001
TN Haywood County Sheriff's Office, Jail & Courts	196	\$13.20	\$11.60	2011	2011
TN Hickman Co Jail	114	\$6.90	\$6.30	2007	2007
TN Henry County Jail	172	\$5.10	\$4.10	2000	2000
TN Johnson Co Detent Facility	114	\$5.00	\$4.50	2003	2003
TN Lake County Jail Expansion	46	\$1.40	\$1.25	2000	2000
TN Marshall County Jail	303	\$8.84	\$8.40	2005	2005
TN Perry County Jail	57	\$3.10	\$3.00	2005	2005
TN Robertson Co Jail	388	\$30.20	\$27.50	2010	2010
TN Roane County Jail	172	\$9.40	\$9.40	2009	2009
TN Scott County Jail	126	\$10.95	\$9.87	2008	2008
TN Tipton County Criminal Justice Complex	125	\$5.6	\$4.8	1997	1997

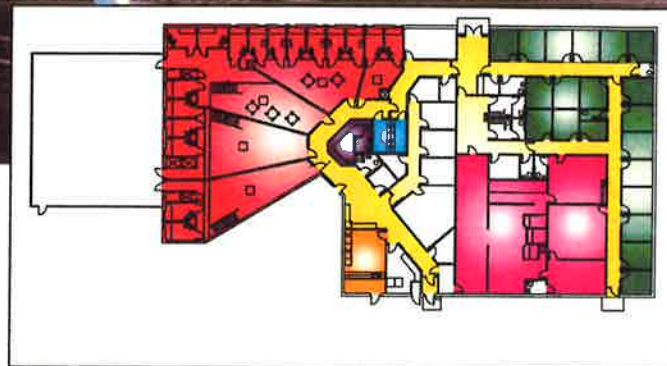
<u>Project Name</u> <small>(#) indicates number of repeat projects</small>	Inmates <u>Total /Design</u>	Worksession Budget <u>T.C.C. Total Capitol Cost in MILLIONS</u>	Actual <u>T.C.C. Total Capitol Cost in MILLIONS</u>	Target Completion	Completion <u>Date</u>
MS Jefferson Davis County Sheriff's Office & Detention Center	60	\$6.90	\$5.70	TBD	
MS Greene County Sheriff's Office & Courts	92	\$7.00	----	TBD	
MS Sharkey County Jail & Sheriff's Office	40	\$3.97	----	TBD	
OK Canadian County Jail	120	\$4.8	\$4.7	2013	2013
OK Carter County Courthouse Annex	NA	\$14.2 (Prelim)			Feasibility Study
OK Logan County Jail (2)	166	\$8.15	\$7.94	2007	2007
OK Noble County Jail	48	\$3.73	\$3.73	2008	2008
OK Pawnee County Jail	94	\$7.2	\$6.9	2012	2012
OK Love County Jail	121	\$8.3	----	2017	
LA Winn Parish Jail	150	\$9.9		2016	
AL Fayette County Jail (Pending Funding)	150	\$7.3		TBD	



Washington County Juvenile Justice Center,

Fayetteville, Arkansas

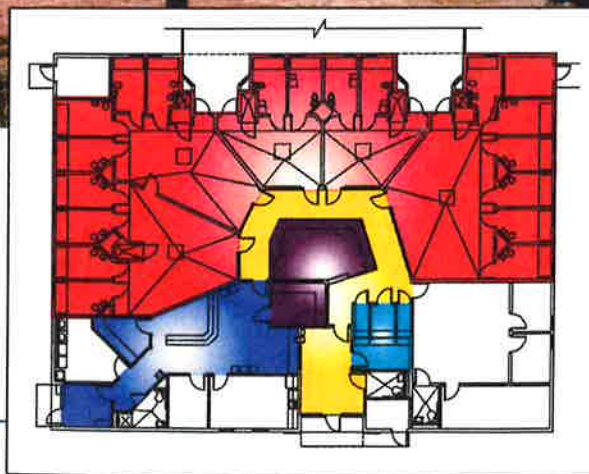
16,900 SF 36 Beds \$2.8 Million 1999

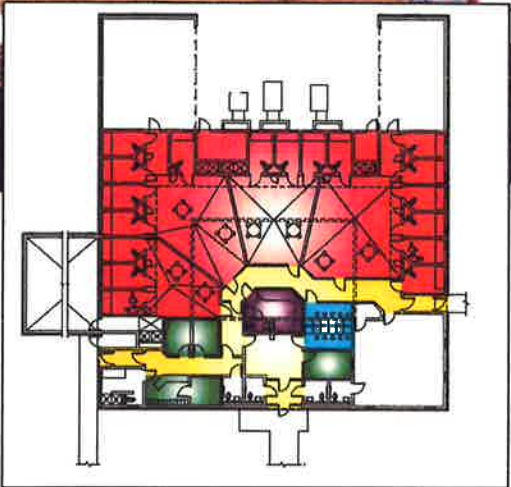


White River Regional Juvenile Detention Center,

Batesville, Arkansas

8,000 SF 24 Beds \$1 Million 1999





Arkansas County Juvenile Facility,

Dewitt, Arkansas

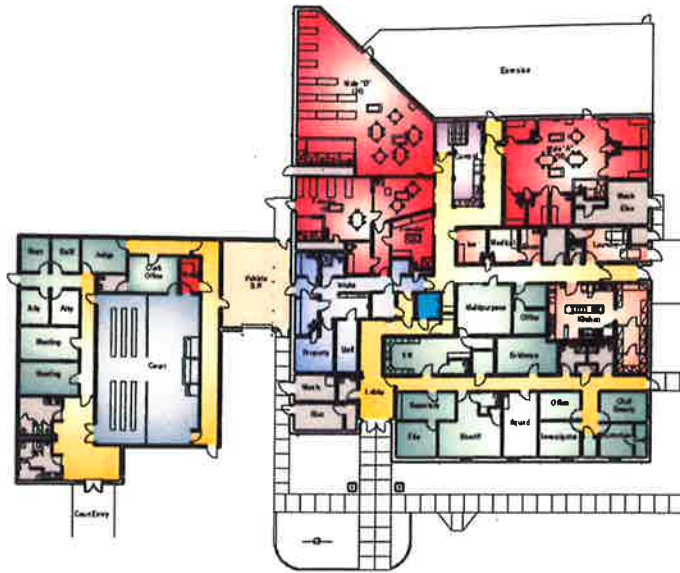
7,000 SF 24 Beds \$1 Million 1999



**Jefferson Davis County Sheriff's Office
& Detention Center,**

Prentiss, Mississippi

19,000 SF 60 Beds \$5.7 Million *Pending Funding*



Greene County Jail, Sheriff's Office, and Courts

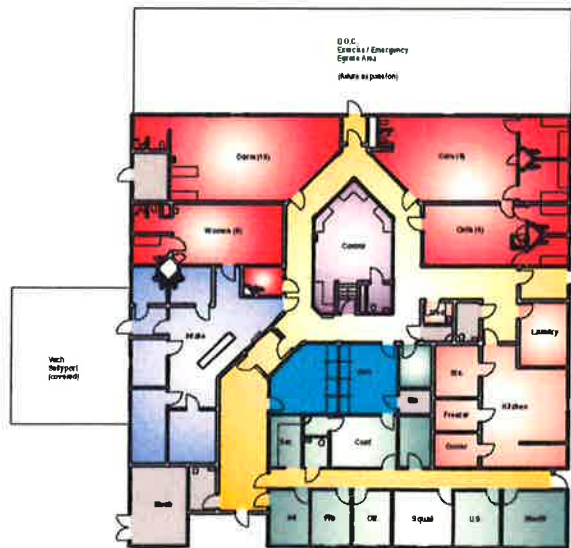
Leakesville, Mississippi

18,300 SQ. FT.

92 Bed

\$7 Million

Pending Funding



Sharkey County Jail and Sheriff's Office

Rolling Fork, Mississippi

13,200 SQ. FT.

40 Bed

\$3.9 Million

pending funding



Marshall County Jail,

Lewisburg, Tennessee

50,000 SF 303 Beds \$8.4 Million 2005



Haywood County Justice Center,

Brownsville, Tennessee

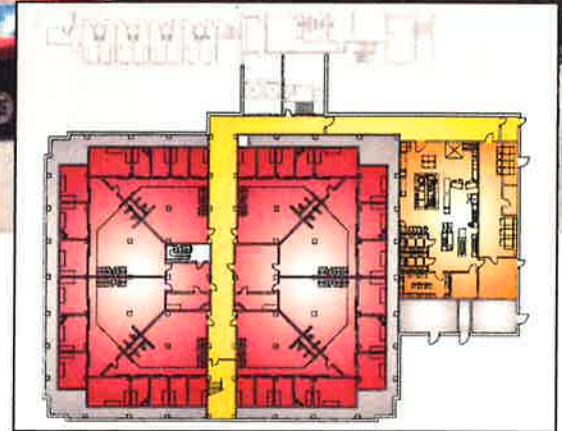
62,300 SF 196 Beds \$11.6 Million 2011



Robertson County Detention Facility,

Springfield, Tennessee

84,000 SF 388 Beds \$27.5 Million 2010



Scott County Justice Complex,

Huntsville, Tennessee

42,000SF 126 Beds \$9.8 Million 2008

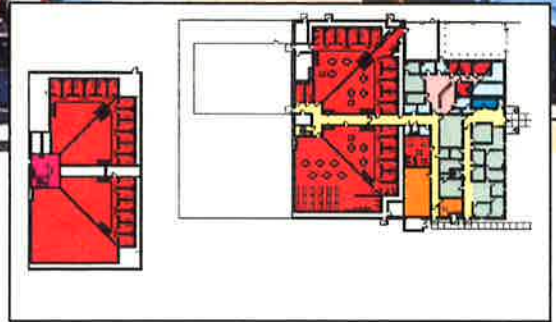


134 W. South Street
 Collierville, TN 38017
 901-457-7688



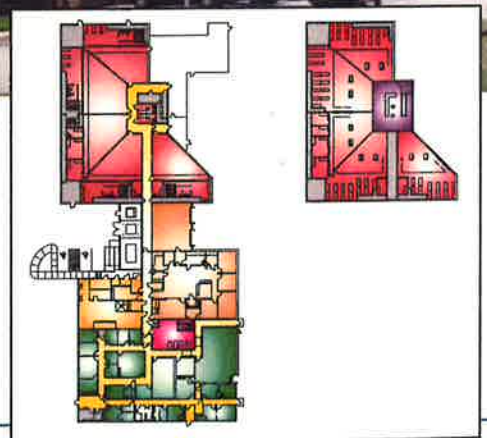
Johnson County Jail,
Mountain City, Tennessee

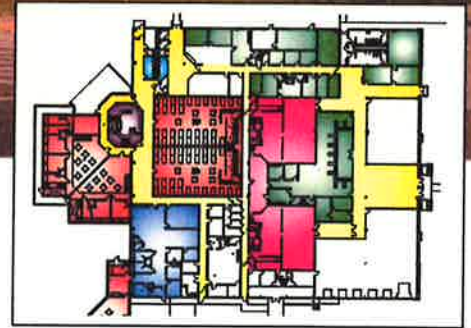
26,000 SF 114 Beds \$4.5 Million 2003



Roane County Jail,
Kingston, Tennessee

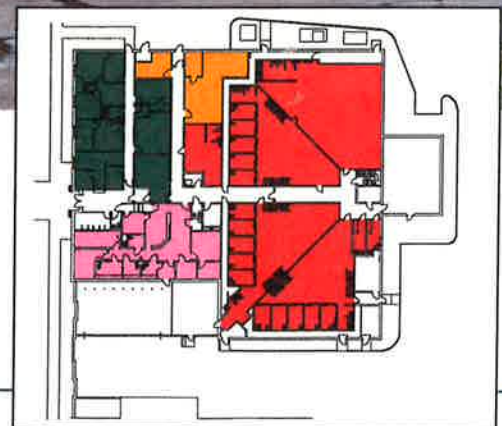
32,300 SF 172 Beds \$9.4 Million 2009





Tipton County Criminal Justice Complex,
Covington, Tennessee

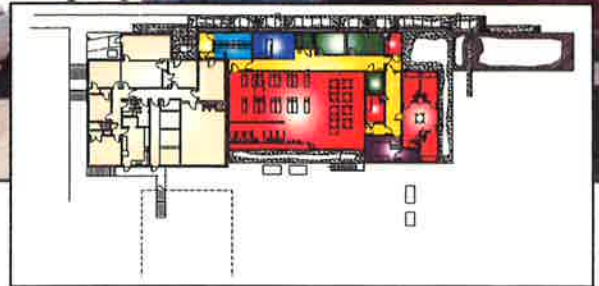
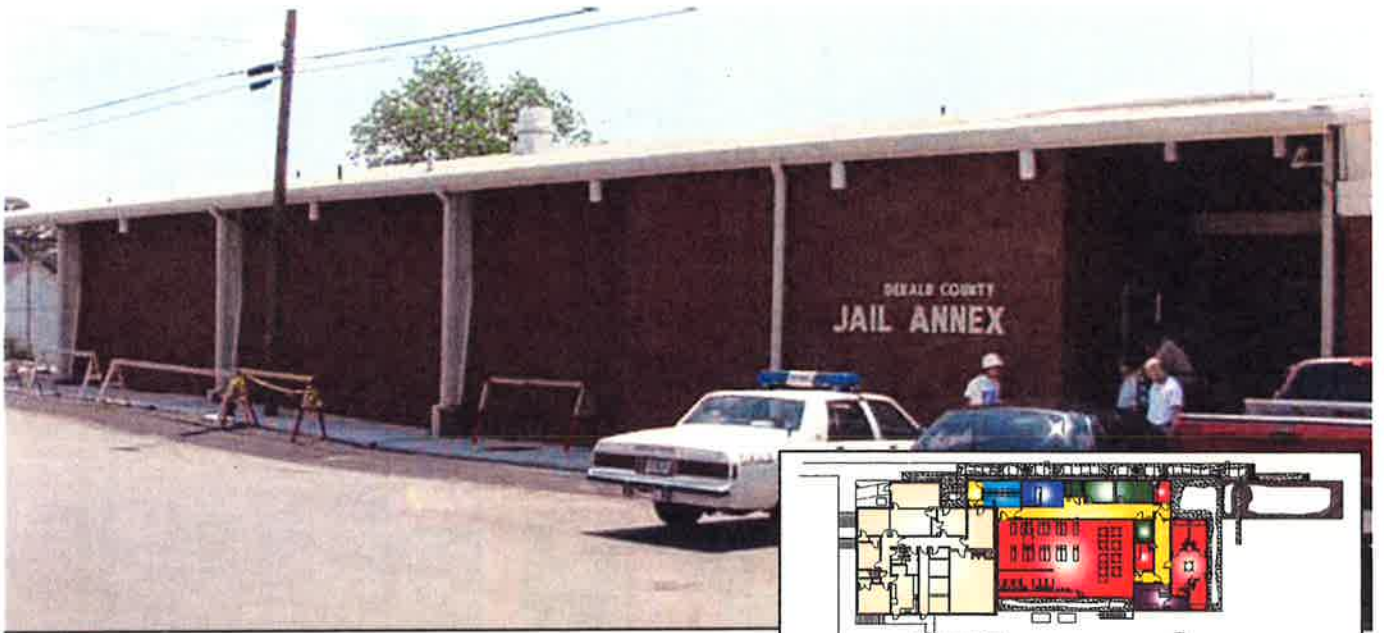
43,000 SF 125 Beds \$4.8 Million 1997



Hickman County Law Enforcement Center,
Centerville, Tennessee

24,500 SF 114 Beds \$6.3 Million 2007

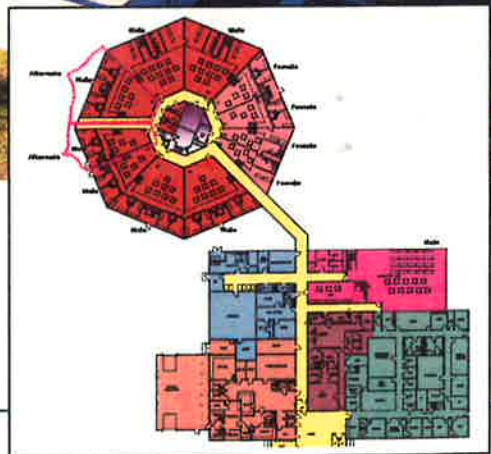
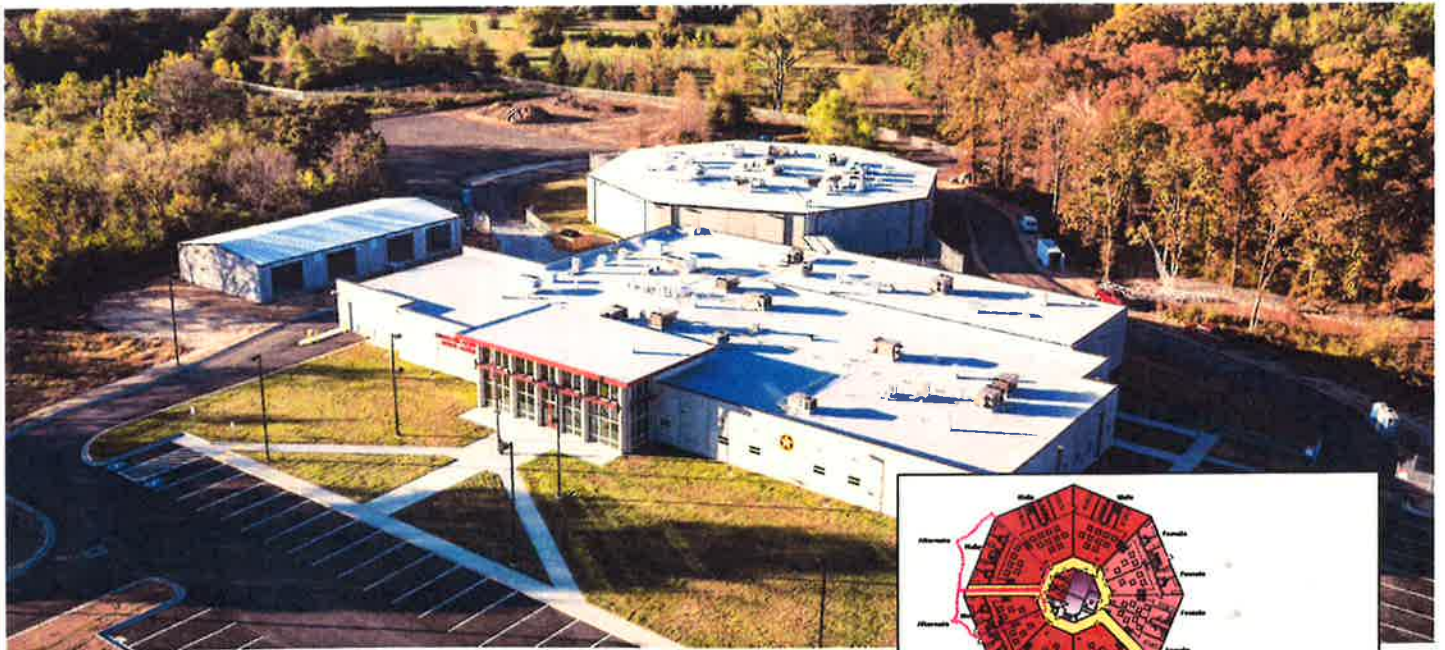
134 W. South Street
Collierville, TN 38017
901-457-7688



DeKalb County Jail,

Smithville, Tennessee

46 Beds \$1.2 Million 2001



Crawford County Detention Center,

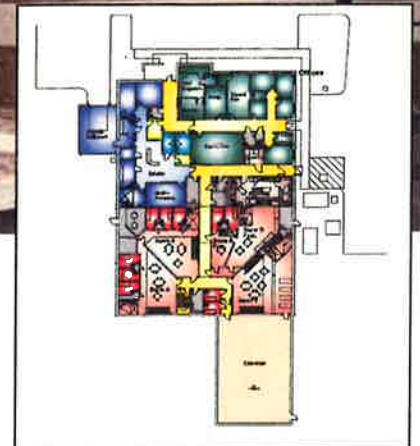
Van Buren, Arkansas

63,600 SF Beds: 307 \$16.2 million 2016



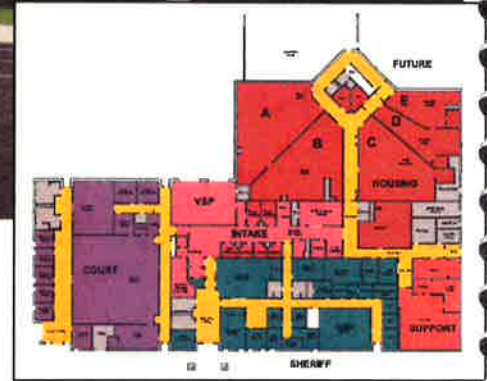
Nevada County Jail,
Prescott, Arkansas

17,800 SF Beds: 80 \$5.9 million October 2015



Sevier County Jail & Sheriff's Office,
DeQueen, Arkansas

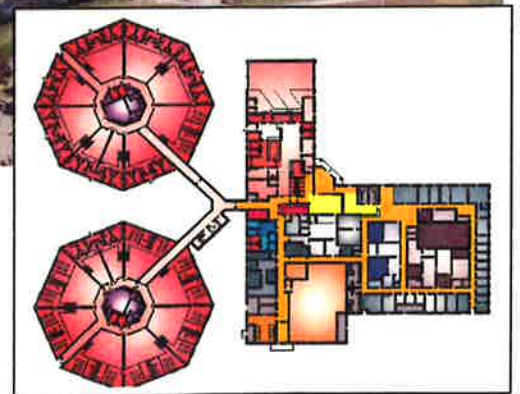
17,373 SF 74 Beds \$5.24 Million 2008



Ouachita County Detention Complex,

Camden, Arkansas

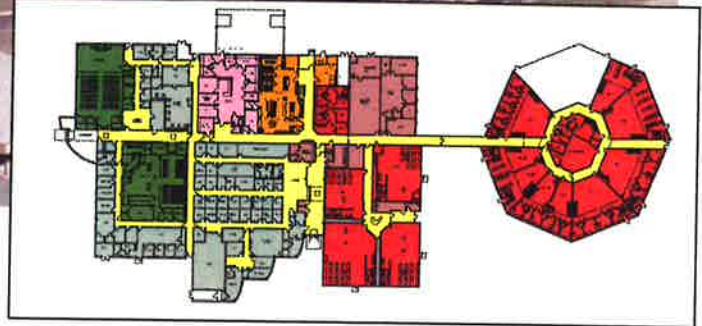
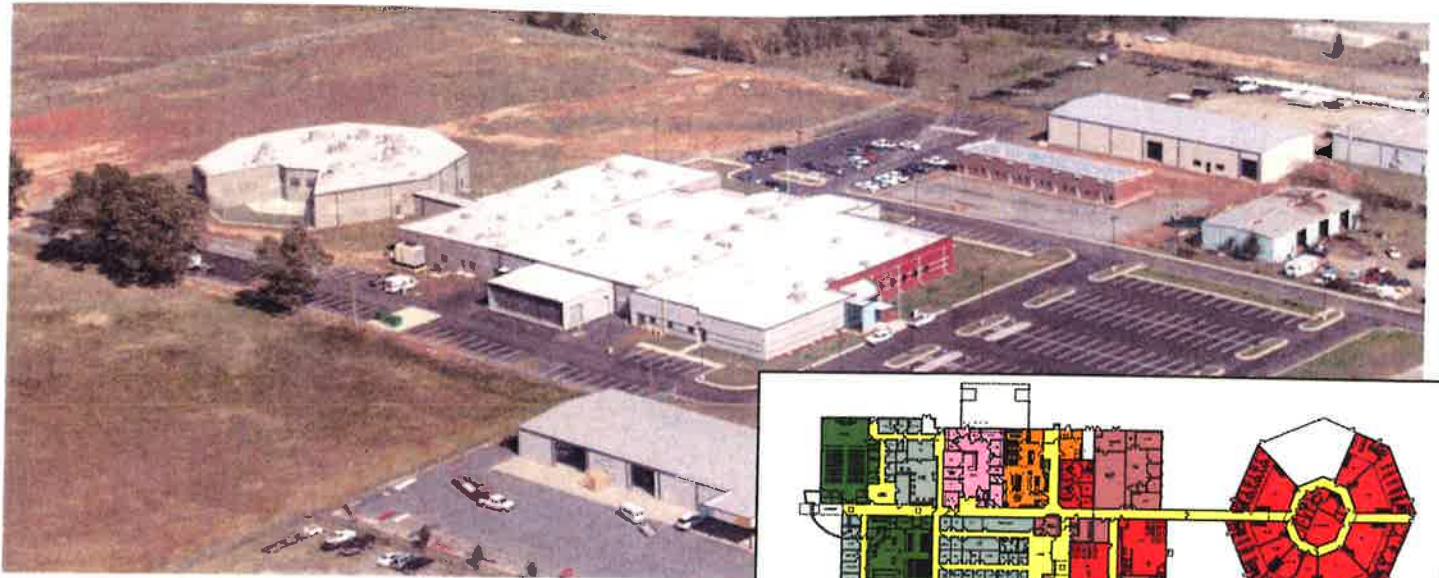
38,200 SF 166 Beds \$11 Million 2010



Washington County Law Enforcement Center,

Fayetteville, Arkansas

155,000 SF 710 Beds \$21.4 Million 2004



White County Law Enforcement Center,
Searcy, Arkansas

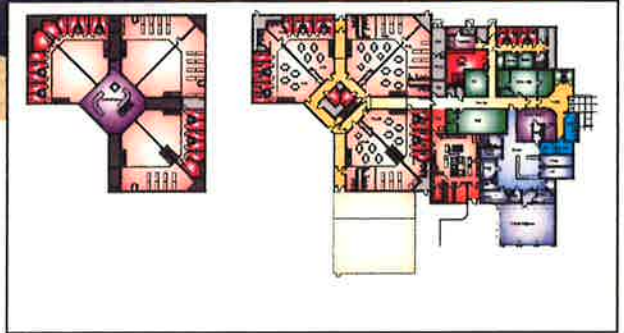
88,000 SF 318 Beds \$14.53 Million 2006



Scott County Jail,
Waldron, Arkansas

15,800 SF 76 Beds \$5.25 Million 2008

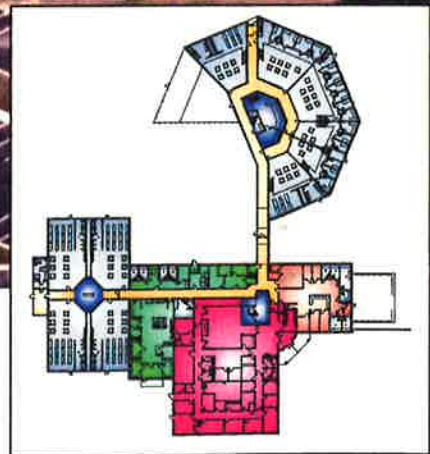
134 W. South Street
Collierville, TN 38017
901-457-7688



Saline County Jail,

Benton, Arkansas

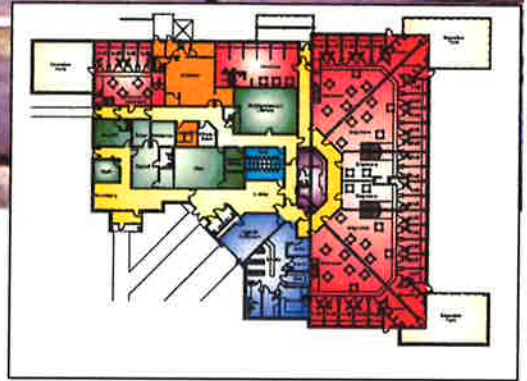
37,500 SF 182 Beds \$7.9 Million 2006



Miller County Correctional Facility,

Texarkana, Arkansas

49,000 SF 294 Beds \$7.8 Million 2002



Arkansas County Jail, Dewitt, Arkansas

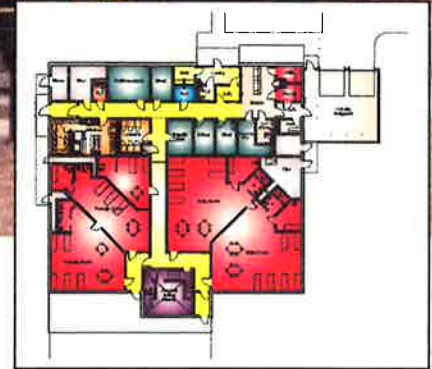
20,000 SF 143 Beds \$3.37 Million 1997



Fayette County Jail,
Fayette, Alabama

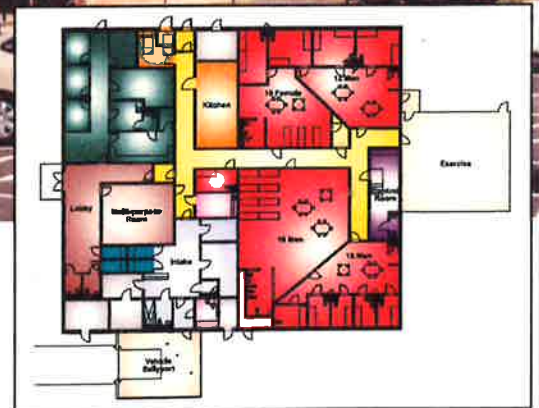
22,000 SF 150 Beds \$7.3 Million (pending funding)

134 W. South Street
Collierville, TN 38017
901-457-7688



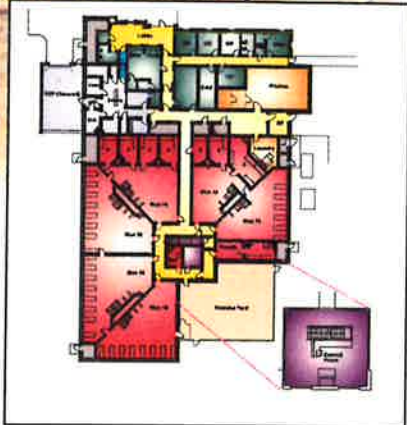
Hot Spring County Jail,
Malvern, Arkansas

10,500 SF 50 Beds \$3.86 Million 2009



Lafayette County Jail,
Lewisville, Arkansas

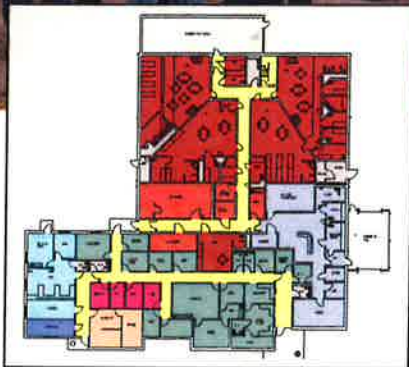
12,100 SF 50 Beds \$4.23 Million 2009



Little River County Jail,

Ashdown, Arkansas

4,000 SF 96 Beds \$6.7 Million Pending Funding



Yell County Jail,

Danville, Arkansas

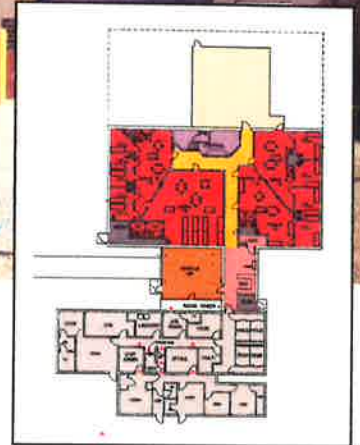
20,500 SF Beds: 84 \$6.8 million December 2015



Prairie County Jail,

Des Arc, Arkansas

7900 SF 48 Beds \$ 3.2 Million 2015



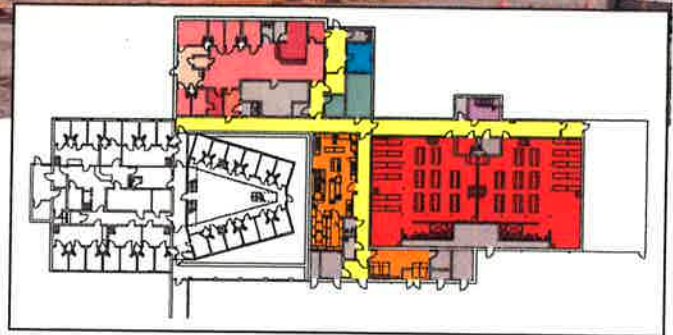
Pawnee County Jail,

Pawnee, Oklahoma

8,700 SF 94 Beds \$6.9 Million 2012



134 W. South Street
Collierville, TN 38017
901-457-7688



Canadian County Jail,

El Reno, Oklahoma

18,000 SF 120 Beds \$4.8 Million 2013



Lawrence County Sheriff's Office,

Walnut Ridge, Arkansas

20,000 SF 100 Beds \$8.4 Million 2017

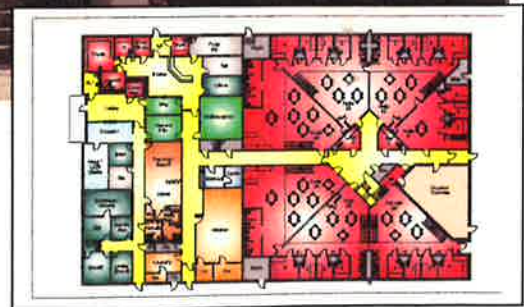
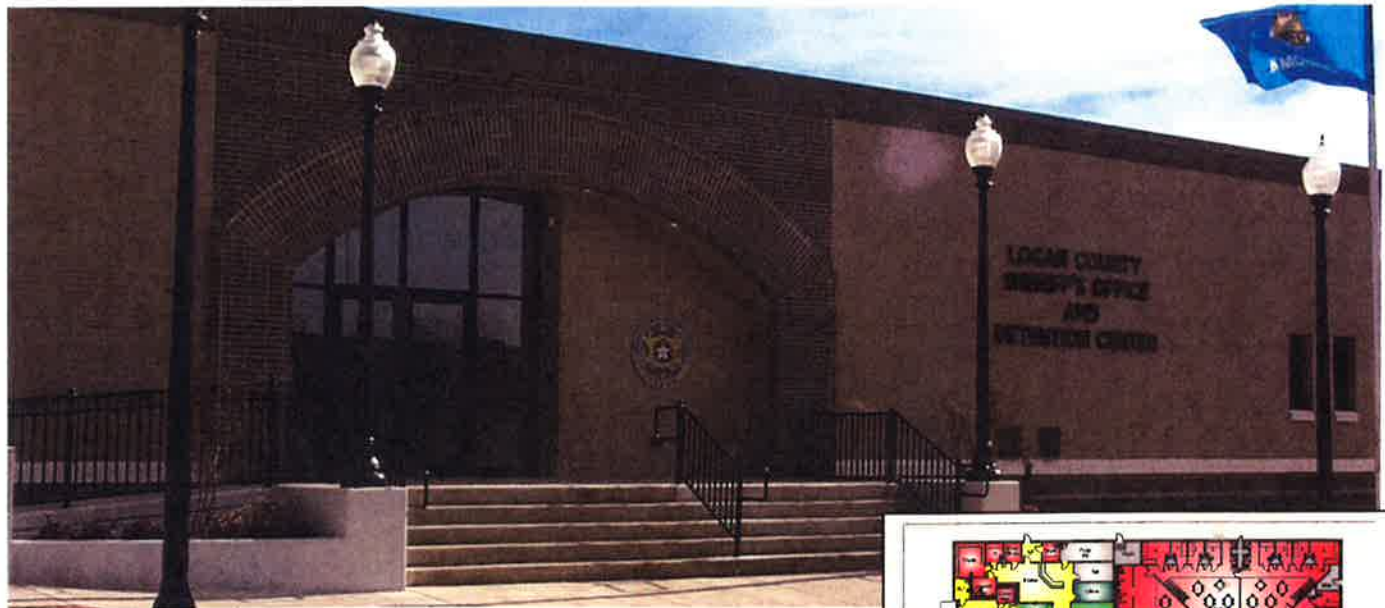
134 W. South Street
 Collierville, TN 38017
 901-457-7688



Noble County Jail,

Perry, Oklahoma

13,000SF 48 Beds \$3.7 Million 2008

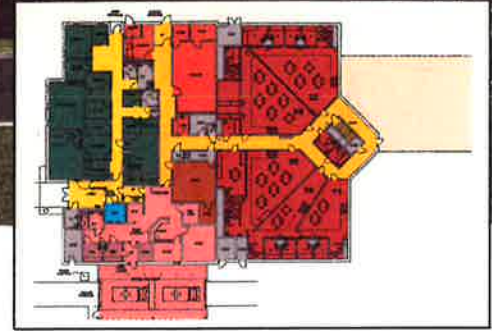


**Logan County Sheriff's Office
& Detention Center,**

Guthrie, Oklahoma

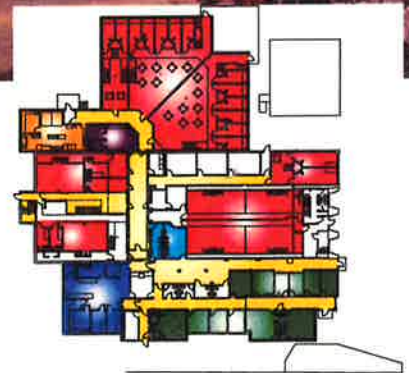
30,200 SF 166 Beds \$7.9 Million 2007

134 W. South Street
Collierville, TN 38017
901-457-7688



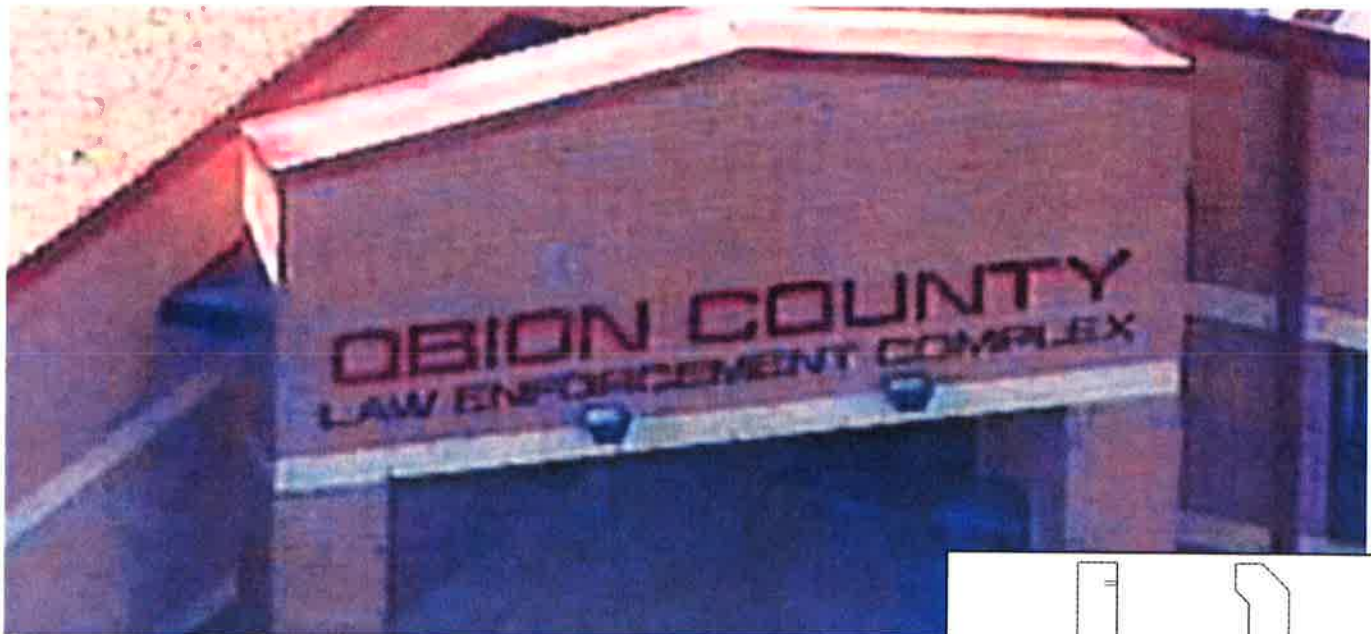
Love County Jail & Sheriff's Office,
Marietta, Oklahoma

23,250 SF 121 Beds \$8.3 Million 2017



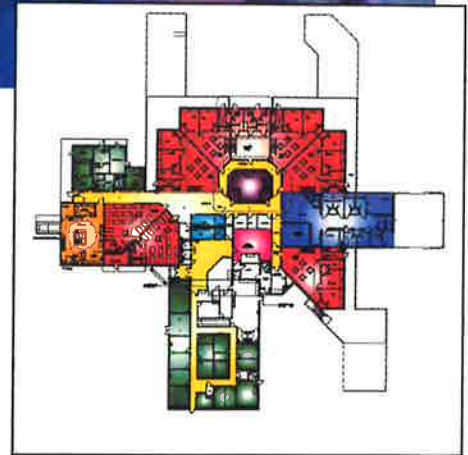
Gibson County Criminal Justice Complex,
Trenton, Tennessee

74 Beds \$4 million 1996



Obion County Law Enforcement Complex,
Union City, Tennessee

30,000 SF 150 Beds \$5.9 Million 1997





James Suzuki Langford, A.I.A.

Education:

University of Tennessee Bachelor of Architecture/1978

Registration:

Mississippi, Arkansas, Tennessee, Montana, Kentucky, Alabama, Georgia, Kansas, Oklahoma, Texas, Virginia, Louisiana, NCARB / American Institute of Architects

Professional Activities:

Mr. Langford has been involved with facilities in Tennessee, Arkansas and Mississippi for over 30 years. His project types include detention facilities, courtrooms, educational buildings, sanctuaries, fellowship halls, family life centers and gymnasiums. This includes master planning, programming and design utilizing work sessions as a critical communication tool.

He has also been involved with the creation and development of the BuildTrue Process. The BuildTrue Process was created to improve the predictability of design intent, budgeting and scheduling with a focus on improved owner communication and satisfaction.

Some recent project experience includes:

- Crawford County Jail, AR
- Jefferson Davis County Sheriff's Office and Detention Center, MS
- Robertson County Detention Facility, TN
- White County Law Enforcement Center, AR
- Washington County Law Enforcement Center, AR
- Washington County Juvenile Justice Center, AR
- Gibson County Criminal Justice Complex, TN
- Haywood County Justice Center, TN
- Noble County Jail, OK
- Ft. Pillow, State of Tennessee Minimum Security Prototype Facility, TN
- Hickman County Law Enforcement Center, TN
- Scott County Justice Complex, TN
- Tipton County Criminal Justice Complex, TN
- Saline County Jail, AR
- Lafayette County Jail, AR
- Sevier County Jail & Sheriff's Office, AR
- Scott County Detention Facility, AR
- Cornerstone Detention, Huntsville, AL
- Shelby County Sheriff's Substation, Memphis, TN
- Sharkey County Jail and Sheriff's Office Study, MS
- Greene County Jail, Sheriff's Office, and Courts Study, MS
- Arkansas County Jail, AR
- White River Regional Juvenile Detention Center, AR
- Arkansas County Juvenile Facility, AR
- Little River County Jail, AR

Scott R. Rozanski A.I.A., LEED AP



Education:

Ball State University, Muncie, In.

Bachelors of Architecture. 1986

Bachelors of Science - Environmental Design. 1986

Registration / Professional / Community

Mississippi, Tennessee, Indiana, Michigan, NCARB / American Institute of Architects, LEED AP, Collierville Planning Commission & Historic District Chairman.

Professional Activities:

Mr. Rozanski has over two decades of experience with a diverse architectural background, guiding projects from conceptual design thru construction including programming, site design, and numerous facility/space utilization studies. These diverse project types include correctional facilities, elementary & high school projects, religious facilities, municipal buildings, multi-family housing, industrial projects, commercial/office projects and historical renovations.

Some recent project experience includes:

- Town of Collierville Police, Jail, & Courts Facility, TN
- White County Law Enforcement Center, AR
- Logan County Jail, OK
- Shelby County Sheriff's Substation, TN
- Washington County Law Enforcement Center, AR
- Robertson County Detention Facility, TN
- Cornerstone Detention, AL
- Scott County Detention Facility, AR
- Scott County Justice Complex, TN
- Marshall County Jail, TN
- Nevada County Jail, AR
- Crawford County Jail, AR
- Hot Spring County Jail, AR
- Noble County Jail, OK
- Saline County Jail Expansion, AR
- Prairie County Jail, AR
- Sevier County Jail & Sheriff's Office, AR
- Gibson County Criminal Justice Complex, TN
- Haywood County Justice Center, TN



Steve Littleton, A.I.A.

Education:

University of Memphis Bachelor of Science – Engineering Technology/2000

Registration:

Tennessee

Professional Activities:

Steve Littleton has over 15 years of experience. His involvement with facility design has included initial concept design, master planning, and project management to detailed production.

Some recent project experience includes:

- Fulton County Jail, AR
- Scott County Justice Complex, TN
- Hickman County Law Enforcement Center, TN
- Roane County Jail, TN
- White County Law Enforcement Center, AR
- Saline County Jail, AR
- Christ the King Lutheran Church, TN
- Biblical Resource Center, TN
- Catholic Diocese Senior Priest Residence, TN
- Millington First Baptist Church Renovations, Masterplan, and New Church Campus, TN
- Faith Baptist Church Education Wing, TN
- Mt. Pisgah Family Life Center, TN
- Christ the King Lutheran Church, TN
- Samuels Furniture, TN
- Crawford County Jail, AR

Mark W. Hammer



Education:

Memphis State University Bachelor of Science in Engineering
Technology/1993

Professional Activities:

Mr. Hammer has over 20 years of experience in project management, production, and design. His involvement with facility design has included initial concept design, master planning, and project management to detailed production.

Some of his recent project planning experience includes:

- Canadian County Jail, OK
- Coffee County Jail Study, TN
- Fayette County Jail, AL
- Logan County Jail, OK
- Miller County Correctional Facility, AR
- Nevada County Jail, AR
- Washington County Law Enforcement Center, AR
- Ouachita County Detention Complex, AR
- Pawnee County Jail, OK
- Saline County Jail, AR
- Lafayette County Jail, AR
- Noble County Jail, OK
- Saline County Jail Expansion, AR
- Prairie County Jail, Des Arc, AR
- Morgan County Juvenile Center, AL
- DeKalb County Jail, TN
- Crawford County Jail, AR
- Johnson County Jail, TN
- Jefferson Davis County Sheriff's Office and Detention Center, MS
- Hardeman County Courthouse, Elevator and Accessibility Modifications, TN
- Morgan County Juvenile Center, AL
- White River Regional Juvenile Detention Center, AR
- Hot Spring County Jail, AR
- Winn Parish Jail, LA



Edward L. Brooks

Education:

University of Memphis
Bachelor's of Engineering Technology
Majoring in Computer Technology 1992
Majoring in Architecture 1999

Professional Activities:

Ed Brooks has over 15 years of experience with responsibilities including drafting and project coordination, and has participated in project planning.

Some recent project experience includes:

- Robertson County Detention Facility, TN
- Haywood County Justice Center, TN
- Saline County Jail, AR
- Washington County Law Enforcement Center, AR
- Kroger (Various Projects in the mid-south area)
- Giles County Jail Renovation, TN
- LaFayette County Jail, AR
- Christ the King Lutheran Church, School Addition, TN
- Catholic Diocese, Senior Priest Residence, TN
- Faith Baptist Church, Expansion, TN
- Collierville Humane Education Building, TN
- Faith Evangelical Lutheran Church, TN
- First Presbyterian Church Fellowship hall, TN
- Longview Point Baptist Church, MS
- Faith Evangelical Lutheran Church, TN



Jack F. Robinson, JR.

Vice President / Project Manager
SMITH-DOYLE CONTRACTORS, INC.

Education:

Bachelor of Science in Civil Engineering,
University of Tennessee, Knoxville - 1978
U.S. Army Command and General Staff College,
Ft. Leavenworth, Kansas - 1991
LEED Green Associate

Memberships:

Associated Builders and Contractors (ABC)
Reserve Officers Association – Colonel, (Retired) U.S. Army Reserves
University of Tennessee Alumni Association
Rotary
Christian Brothers High School – Hall of Fame
Leadership Collierville

Responsibilities include cost estimating, project management, scheduling, and project development and coordination with Owner, Contractors, and Consultants.

- Saline County Detention Center, AR
- Sevier County Jail and Sheriff's Office, AR
- Scott County Jail and Sheriff's Office, AR
- Robertson County Jail Addition, TN
- Nevada County Jail, AR
- Washington County Law Enforcement Center, AR
- Ouachita County Detention Complex, AR
- Pawnee County Jail, OK
- Saline County Jail, AR
- Lafayette County Jail, AR
- Noble County Jail, OK
- Saline County Jail Expansion, AR
- Prairie County Jail, Des Arc, AR
- Crawford County Jail, AR
- Johnson County Jail, TN
-



Robert A. Barrett

Senior Vice President
SMITH-DOYLE CONTRACTORS, INC.

Education:

Bachelor of Science in Civil Engineering,
University of Memphis, Memphis, TN – 1986

Memberships:

Board of Directors West TN Chapter of Associated
Builders and Contractors (ABC)
American Society of Civil Engineers (ASCE)

Responsibilities include cost estimating, sales and project management on a variety of projects of all types and sizes.

- Southwest Tennessee Community College, New Library, TN
- Praxair, Inc., Civil Package for Plant Expansions, TN
- Cargill, Inc., Administrative Maintenance Contract and New Construction Project, TN
- Ash Grove Cement Company, Cement Storage Dome and Handling System, KS
- Newly Weds Foods, Inc., Plant Renovations, MS
- Producers Rice Mill, Warehouse and Plant Additions, AR
- Osmose, Inc. – Chemical Plant Additions, SC White County Law Enforcement Center, AR
- Washington County Law Enforcement Center, AR
- Washington County Juvenile Justice Center, AR
- Gibson County Criminal Justice Complex, TN
- Haywood County Justice Center, TN
- Noble County Jail, OK
- Ft. Pillow, State of Tennessee Minimum Security Prototype Facility, TN
- Hickman County Law Enforcement Center, TN
- Scott County Justice Complex, TN
- Tipton County Criminal Justice Complex, TN
- Saline County Jail, AR
- Lafayette County Jail, AR
- Robertson County Jail Addition, TN



Donald H. Abernathy, Jr.

Vice President
Smith-Doyle Contractors Inc.

Education:

Bachelor of Science Degree in Civil Engineering, University of Memphis,
Memphis, TN – 1995

Associates of Drafting & Design, Northwest Community
College, Senatobia, MS – 1988

Memberships:

National Society of Professional Engineers (NSPE) - West Tennessee Chapter

American Society of Civil Engineers (ASCE) - Memphis Chapter Associated Builders and Contractors
(ABC)

A brief project listing includes:

- Scott County Jail, AR
- White County Jail, AR
- Washington County Adult & Juvenile Facilities, AR
- Sevier County Jail, AR
- Robertson County Jail, TN
- Nevada County Jail, AR
- Pawnee County Jail, OK
- Saline County Jail, AR
- Lafayette County Jail, AR
- Noble County Jail, OK
- Saline County Jail Expansion, AR
- Prairie County Jail, Des Arc, AR
- Crawford County Jail, AR
- Johnson County Jail, TN
-



Mike Kelley
Business Development

EDUCATION: Henderson State University

MEMBERSHIPS:

Associated Builders & Contractors (ABC)

Rotary

G.E.A.P.S – Associates Board Director, Past Mid-South Chapter President

Professional Activities:

Mike has over 40 years of experience in construction. Duties have included purchasing, estimating, project management, scheduling, and business development.

A brief project listing includes:

White County Law Enforcement Center, AR

Saline County Jail, AR

LaFayette County Jail, AR

Yell County Jail, AR

Crawford County Jail, AR

Logan County Jail, OK

Noble County Jail, OK

Canadian County Jail, OK

Fayette County Jail AL

Winn Parish Jail, Winnfield, LA

References

Lawrence County Jail

Sheriff Jeff Yates
(870) 886-2525

Hickman County Jail, Centerville, Tennessee

Sheriff Randal Ward
(931) 729-6143

Scott County Justice Complex, Huntsville, Tennessee

County Mayor Jeff Tibbals
(423) 663-2000
Sheriff Michael Cross
(423) 663-2245

Scott County Jail, Waldron, Arkansas

County Judge James Forbes
(479) 637-2155

Noble County Jail, Perry, Oklahoma

Sheriff Charlie Hanger
(580) 336-3517

Crittenden County Jail Addition, West Memphis, Arkansas

County Judge Woody Wheelless
(870) 739-3200

Sevier County Jail, DeQueen, Arkansas

County Judge Greg Ray
(870) 642-2425
Jail Administrator Kim Culp
(870) 642-6100

Ouachita County Jail, Camden, Arkansas

Sheriff David Norwood
(870) 837-2200

Pawnee County Jail, Pawnee, Oklahoma

Sheriff Mike Waters
(918) 762-2565
Commissioner Dale Carter
(918) 762-3741

Canadian County Jail, El Reno, Oklahoma

Commissioner David Anderson
(405) 295-6200
Commissioner Jack Stewart
(405) 295-6200

Yell County Jail, Danville, Arkansas

Judge Mark Thone
(479) 495-4860
Sheriff Bill Gilkey
(479) 495-2811

Nevada County Jail, Prescott, Arkansas

Judge Mark Glass
(870) 887-3115
Sheriff Danny Martin
(870) 887-2616

Prairie County Jail, Des Arc, Arkansas

Judge Mike Skarda
(870) 256-3741

Lafayette County Jail, Lewisville, Arkansas

Sheriff Odie Smis
(870) 921-4252

Robertson County Jail, Springfield, Tennessee

County Executive Howard Bradley
(615) 384-2476
Sheriff Bill Holt
(615) 384-7971
Former Sheriff Gene Bollinger
(615) 384-7971

**Logan County Jail, Guthrie,
Oklahoma**

District Judge Luke Duel
(405) 282-6941

White County Jail, Searcy, Arkansas

Retired County Judge Bob Parish
(501) 268-7027

County Judge Michael Lincoln
(501) 279-6200

Jail Administrator Major Clayton
Edwards

(501) 279-6231

Sheriff Ricky Shourd
(501) 279 6279

Saline County Jail, Benton, Arkansas

Sheriff Rodney Wright
(501) 303-5609

**Miller County Jail, Texarkana,
Arkansas**

Sheriff Ron Stovall
(870) 774-3001

Noble County Jail, Perry, Oklahoma

Sheriff Charlie Hanger
(580) 336-3517

Retired Commissioner Dean
Courtright
(580) 336-1930

**Logan County Jail, Guthrie,
Oklahoma**

Sheriff Jim Bauman
(405) 282-4100

District Judge Luke Duel
(405) 282-6941

**Washington County Jail, Fayetteville,
Arkansas**

Sheriff Tim Helder
(479) 444-5700

Director of Facilities Ron Wood
(479) 466-2817

**Hot Spring County Jail, Malvern,
Arkansas**

County Judge Bill Scrimshire
(501) 332-2261

Sheriff Ed Hollingsworth
(501) 332-7412

**Scott County Jail, Waldron,
Arkansas**

County Judge James Forbes
(479) 637-2155

Sheriff Terry Staggs
(479) 637-4156

Jail Administrator Shane Davis

**Love County Jail & Sheriff's Office,
Marietta**

Oklahoma

Commissioner Linda Hyman
(580) 276-2191

Fayette County Jail, Fayette, Alabama

John Gordon – County Administrator
(205) 932-4510

**Marion County Jail, Yellville,
Arkansas**

Judge Terry Ott
(870) 449-6231

Sheriff Joan Vickers
(870) 449-4236

**Crawford County Detention Center,
Van Buren, Arkansas**

Judge John Hall
(479) 474-1511

Sheriff Ron Brown
(479) 474-2261

**Conway County Jail
Morrilton, Arkansas**

Sheriff Mike Smith
(501) 354-2411

Judge Jimmy Hart
(501) 354-9640