

Rev
9:33
M.L.

**Bolton/Lack, PLLC
Request For Qualifications For:
Professional Services to Design and
Construct a Juvenile Detention Center
in Harrison County, Mississippi**

ORIGINAL



Proposal for
Architectural & Engineering Services
Harrison County Juvenile Detention Center
for
Harrison County Board of Supervisors
Harrison County, Mississippi



Bolton / Lack, PLLC
124 Fayard Street
Biloxi, Mississippi 39530

Bolton/Lack, PLLC

124 Fayard Street , P.O. Box 14, Biloxi, Mississippi 39533
(228) 374-5212, F (228) 3743291, C (228) 217- 3136

June 27, 2017

Harrison County Board of Supervisors
c/o Chancery Clerks Office
P.O. Box Drawer CC
Gulfport, Mississippi

Subject: Proposal for Architectural and Engineering Services for
Harrison County Juvenile Detention Center

The firm of Bolton/Lack, PLLC would like to take a moment of your time to introduce our firm along with its consulting firms and to make this proposal to provide Architectural and Engineering services for the Harrison County Board of Supervisors.

Our firm, along with our consultant firms, offer a well organized team that have work together for many years with the commitment and expertise to achieve a highly functional facility that Harrison County as well as the user will be proud of for years to come. Our team approach, which includes our firm, associates, consultants and the client, will bring a unique degree of performance, accuracy, skill and energy to your project. The team approach will guarantee to make this project a reality and to keep it on schedule and in budget. Our firm and consultant also work with the user during the warranty period and schedule walk-thru's of the facilities at the end of the warranty period to guarantee that the facility is functioning as the user desires.

Enclosed is a brief summary of our Qualifications, Experience, Capacity to Perform the Work and Projects that our firm and consultants have completed as well as what we can offer the County on the proposed project.

We would like to thank you in advance for your every consideration and look forward to the opportunity to make a more formal presentation to the selection committee and/or The Board of Supervisors.

Respectfully,
Bolton/Lack PLLC



William V. Lack Jr., Architect, Project Manager

Enclosures: Proposal for Professional Services to Design and Construct a Juvenile Detention Center

Walter T. Bolton

William V. Lack, Jr.

Table of Contents

Cover Letter

Table of Contents

1 – QUALIFICATIONS OF THE FIRM

Team Introduction

1.1 Bolton/Lack, PLLC Overview.....	3
1.2 Brown Mitchell & Alexander Overview.....	4
1.3 Canon Engineering, LLC.....	6

Team Resumes

- Walter T. Bolton
- William V. Lack, Jr.
- Bill Mitchell
- Benjamin Smith
- Nick Gant
- Mark Otto
- Victor Lachin
- Brent Rishel

1 – QUALIFICATIONS OF THE FIRM

2.1 Bolton/Lack, PLLC.....	16
2.2 Brown Mitchell & Alexander.....	27
2.3 Canon Engineering, LLC.....	32

3 – CAPACITY FOR PERFORMANCE

3.1 Capacity Introduction.....	33
3.2 Location Map.....	34

Bolton/Lack, PLLC

124 Fayard Street , P.O. Box 14, Biloxi, Mississippi 39533

(228) 374-5212, F (228) 3743291, C (228) 217- 3136

In 2003, Mr. William V. Lack, Jr. and Mr. Walter T. Bolton formed the Joint Venture firm of Bolton/Lack Associates to offer clients a more diversified architectural product and to produce that product in a more timely and economical manner. In 2008, BLA firm became BOLTON/LACK, PLLC, which today with over seventy five years of architectural experience through its principles, B/L, is proud of its contributions to the coast, its revitalization, and historic preservation.

Architecture has changed dramatically and today's projects are much more complex. Added to decisions about site, image, and function are energy concerns, communication needs, safety, security, maintenance, and ever-tighter budgets. Throughout these changes, the firm has maintained "a large contextual vision", which is formed from experience and from concern for the total environment – human, historical, and aesthetic.

B/L's staff numbers eight professional and technical employees and a large number of highly qualified and experienced associates. Professional services offered include:

- } Master Planning
- } Programming
- } Site Selection
- } Existing Facilities Survey
- } Basic Architectural Services
- } Space Planning
- } Interior Design
- } Telecommunication Planning
- } Facilities Management
- } Post Construction Period Services

Every project undertaken by B/L is evaluated and approached individually in order to insure the assembly of the most appropriate professional and technical staff. Each project is continuously monitored and additional staff and resources are added as required to maintain quality, schedule, and cost control.

B/L's creative solutions to its projects through its principles and staff members have consistently won the recognition from professional and lay organizations, as well as client loyalty. This success is rooted in the fact that firm members are committed to giving undivided attention for whatever time is necessary to meet our client's needs.

Walter T. Bolton

William V. Lack, Jr.



Professional Qualifications

Brown, Mitchell & Alexander, Inc. (BMA) is a consulting engineering firm specializing in civil engineering consulting, planning and surveying services for a wide range of clients along the Mississippi Gulf Coast. Established in 1967 as Brown Engineers by Joseph L. Brown, Jr., BMA has earned the reputation as one of the strongest engineering firms on the Mississippi Gulf Coast.

Bill Mitchell joined the firm in 1987 and became president and owner of Brown & Mitchell, Inc. In 2008, leadership and ownership of the firm was turned over to long-time employee Dax Alexander and the name changed to Brown, Mitchell & Alexander, Inc. The name may have changed, but under Alexander's leadership, the firm has maintained the priorities established 50 years ago: to provide quality work and customer satisfaction while building a better Mississippi Gulf Coast.

Client Satisfaction Philosophy

Our goal at BMA is to continually exceed our clients' expectations by providing a quality product in a timely manner. Our best advertisement is providing good work and maintaining a solid reputation. BMA has provided continuous service to many of our clients for years, some since the early 1970's. Repeat business is the best indicator and highest compliment for measuring quality work, client satisfaction and value. BMA is sensitive to providing the best value to our clients by working efficiently and eliminating overhead expenses.

Our philosophy is reflected in a recent client survey that revealed our services met or exceeded client expectations 99% of the time. In addition, BMA was given the **Premier Award for Client Satisfaction**. *

Client Approach

Everyone at BMA strives to provide our clients with projects that are a right fit for the community, within their budgets, while meeting their needs. We don't take the "cut and paste" approach to project design, instead we think creatively and look at the big picture. We encourage our clients to look ahead to the future to ensure the current design or phase meets those future goals and visions.

As engineers, it is our responsibility to provide solutions that create an environment that promotes the well-being of people and overall quality of life while protecting the environment. Our firm has extensive experience surrounding this ideal, including Low Impact Development (LID), Traditional Neighborhood Development (TND) design and Leadership Energy and Environment Design (LEED).

BMA is a proud partner of the Complete Streets Coalition whose goal is to promote improved accessibility along our streets for all users including pedestrians, bicyclists, automobiles and public transportation. For more information on these practices, go to: www.completestreets.org, www.lowimpactdevelopment.org or www.usgbc.org.

Services

We utilize a team concept approach to provide our clients with quality projects that are completed within both budget and time requirements. BMA is built around service and is committed to accountability.

Services our firm provides include:

- Engineering design
- Site selection and analysis
- Technical and economic feasibility studies
- Preliminary engineering studies
- Preparation of technical specifications and construction drawings
- Bidding assistance, construction administration and observation
- Permit preparation and coordination with Federal, State and local agencies
- Boundary, topographic and ALTA surveys
- Coordination with specialized consultants
- Operation and maintenance procurement services
- Water and sewer rate analyses
- Environmental services including: environment permitting, wetland delineations, storm water permitting, environmental due diligence assessments, threatened and endangered species surveys, NEPA compliance and aquatics surveys
- Construction/project management

Profile

With nearly 50 years of experience in providing a full spectrum of civil design services, BMA offers surveying and regulatory permitting through careful contract administration and construction observation. We have been involved in the study and design of both public and private projects with a broad array of varying scopes.

BMA has extensive experience working on State and Federally-funded projects of various scope and complexity and we are very familiar with grant preparation procedures, regulations and the deadlines associated with such projects. Our experience with projects that have multiple funding sources has given us insight in dealing with funding that places a variety of requirements on a project.

We have an Environment Specialist/Marine Biologist on staff, allowing BMA to assist with such issues as wetland permitting, environmental site assessments, storm water permitting and other environmental services. We are very familiar with the requirements of various Federal and State regulatory agencies including the U.S. Army Corps of Engineers, Mississippi Department of Marine Resources and the Mississippi Department of Environmental Quality. This assists our design team while guiding our clients through the sometimes complex regulatory process.

Bill Mitchell is a Certified Construction Manager which allows our firm to provide construction/project management services to our clients in order to advise and manage all aspects of a project, contributing to the control of costs and assuring successful completion of a project within the scheduled time.

CANON ENGINEERING, LLC

Company Profile

CANON ENGINEERING, LLC

3419 Washington Ave.

Gulfport, MS 39507

P (228) 863-0728

F (228) 865-9618

C (228) 861-5454

bar@canoneng.com

Canon Engineering was established in 1970 in Gulfport, MS to provide professional consulting engineering services in the disciplines of mechanical and electrical engineering. In January 1997 the firm became Canon Engineering, LLC. We take pride in providing quality engineering services to our clients. Our central location on the coast allows quick access to our clients and projects throughout South Mississippi.

Canon Engineering, LLC has a policy of maintaining a qualified staff to accommodate workloads rather than staffing up and down with contract labor. Presently the firm has a staff consisting of 12 qualified and dedicated professional and technical personnel. The design staff has over 95 years cumulative experience. The partners of the firm are all hands on design professionals that work directly with the projects.

Canon Engineering provides relevant services as follows:

- Plumbing Design
- Fire Protection System Design
- Mechanical HVAC Design
- Electrical Design
- Fire Detection System Design
- Communication Systems Design

At Canon Engineering, projects are administered utilizing the team concept. The team is headed by a project manager best qualified to administer and coordinate the project. Team members are selected based upon their experience and expertise as related to the specific project. The project manager is responsible for internal and external coordination with clients and other consultants. Team size is established to provide the necessary expertise and manpower required to meet the demand of complexity and scheduling to meet project timetables. The company generally maintains three design teams consisting of one hvac designer, one plumbing/fire protection designer, and one electrical designer. Each team also has two drafters for drafting assistance and file management. The team concept allows multiple project performance with added capabilities to double up efforts when projects dictate a fast response on large projects as well as redundancy. The company has a full time inspector to provide job site review. An administrative staff provides support to the technical staff to ensure timely and complete accomplishments to projects.

To perform the quality of work demanded by Canon Engineering staff, the company maintains state of the art computer software and hardware. Systems are continually updated to provide its users with the best tools available to accomplish their tasks and goals. Computer software programs are utilized by all disciplines within the firm. Programs range from commercially available programs to in house designed programs tailored for specific users.

The greatest asset of Canon Engineering is its dedicated staff of professionals and technical personnel. Each individual is proud to provide the quality product that the company has been known for throughout its existence. The staff has wide and varied experience in many areas of commercial, industrial, governmental, and institutional facilities design.



BOLTON / LACK, PLLC **President / Principal**

Professional History

Walter Bolton has a Master of Architectural Degree from Georgia Institute of Technology and has Forty years experience with Thirty Seven years as a licensed Architect. Walter holds active Architectural Licenses in Alabama and Mississippi.

Experience 40 Years

Education
University of Southern Mississippi
Bachelor of Science
1972

Georgia Institute of Technology
Bachelor of Architecture
1976

Georgia Institute of Technology
Master of Architecture
1977

Active Registration
Mississippi 1983
Alabama 2002

Professional Affiliations

NCARB 1982

American Institute Architecture 1980

Mississippi AIA 1982

Mississippi Coast AIA 1982

Walter has received national design awards from the United States Air Force and several local design and historic preservation awards. Walter is past president of the Gulf Coast Chapter of the Mississippi Chapter of American Institute of Architects, past president of the Coast Division of the Mississippi Chapter of American Institute of Architects and past board member of the Mississippi Chapter of American Institute of Architects. He is a past member of the Ocean Springs Historical Commission and a past member of the Ocean Springs Planning Commission.

Walter has performed design and construction projects for numerous governmental agencies and municipalities including: U.S. Navy, U.S. Air Force, Mississippi National Guard, Mississippi Air National Guard, Bureau of Building Grounds and Real Property Management, University of Southern Mississippi, USM Gulf Coast Research Laboratory, Mississippi Gulf Coast Community College, Harrison County, Jackson County, Cities of Biloxi, D'Iberville, Moss Point, Ocean Springs, Waveland, and Waynesboro, Biloxi Port Commission, Maritime and Seafood Industry Museum, Hancock County Library System, Harrison County Library System, Jackson George County Library System, Biloxi Public Schools, Ocean Springs Public Schools.

Related Experience

Mr. Bolton's specific experience and notable projects include, but are not limited to, the following:

- New Emergency Management Facility, Police Headquarters, **Jail**, City Court and Fire Station, City of Ocean Springs, Mississippi
- New City Hall, City Hall Complex, and Fire Station Waveland, Mississippi
- New FEMA 361 Emergency Shelter and Community Center, Jackson County
- Three New FEMA 361 Emergency Shelters, Jackson County
- New Point Cadet Harbor Master Building Biloxi Port Commission, Biloxi, Mississippi
- New Port Commission Headquarters, Biloxi Port Commission, Biloxi, Mississippi
- New Aid Combat Readiness Training Facility Air National Guard Base, Gulfport, Mississippi
- New Health Department/Human Service Facility, Harrison County, Biloxi, Mississippi

Walter T. Bolton
Associates, AIA
Architect, and Planner

124 Fayard Street,
P. O. Box 14
Biloxi, MS 39533
P (228) 374-5212
F (228) 374-3291
C (228) 217-3i36
Buzzy@bolton-associated.com



BOLTON / LACK, PLLC ***Vice President / Principal***

Professional History

Bill Lack, a resident of Ocean Springs, Mississippi, has been in private practice as a registered architect for 43 years. Bill is past president of the Mississippi Chapter of the American Institute of Architecture, and served on the Institute's Board of Directors. He is a past member and President of the Mississippi State Board of Architecture. Bill has served as design grader for the National Council of Architectural Registration Design Exams. His commitment to excellence in design has resulted in four Awards for Design Excellence presented by the American Institute of Architects (AIA), as well as a National Design Award from the United States Air Force.

After going into private practice in 1974, Bill has been associated with several firms as a principle in charge of projects throughout the Southeastern United States. Projects include municipal, medical, education, recreation, housing, commercial, military and correction facilities of all types.

In 1990 Bill formed William Lack Architect, PLLC with the intention of providing professional architectural services at a local level with personal attention. Over the past 20 years this personal attention has been focused in the Mississippi coastal area. With his experience and expertise of design and programming of specialized projects, Bill also provides consulting services to other architectural firms where he provides assistance in programming, design and monitoring of all phases of development.

Bill's practice much of which has emphasized the specialized discipline of criminal justice facilities design and construction throughout Mississippi and the southeast including federal, state, county and city entities.

The following is a partial listing of Justice/Detention/Correction Facilities with which he has been associated

- Madison County, MS Justice Complex,
- Forrest Co., MS Justice Complex
- Brookhaven/Lincoln Co., MS Justice Complex,
- Forest Co., MS **Juvenile Facility**
- Neshoba County, MS Detention Facility,
- Desoto County, Ms Detention Facility
- Neshoba County, MS **Juvenile Facility**
- Rankin County, MS Justice Center
- Jasper County, MS Detention Facility
- Copiah County, MS Detention Facility,
- Washington Co., MS **Juvenile Facility**

Experience 43 Years

Education
University of Southern Mississippi
Bachelor of Science
1966

University of Tennessee
Bachelor of Architecture
1971

Active Registration
Mississippi 1974

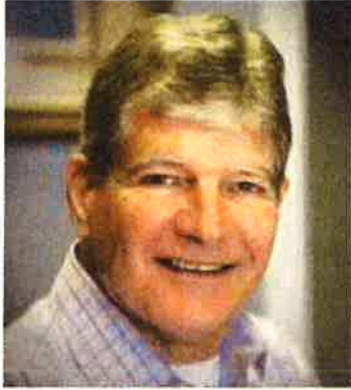
William V. Lack, Jr., Architect

610 Rue Maupesant,
Ocean Springs, Ms 39564
P (228) 324-3772

wlack@lackarchitect.com
www.lackarchitect.com

Continued

- Tate County, MS Detention Facility,
 - Issaquena County, MS Jail
 - Jackson County, MS Detention Facility,
 - Jackson County, MS Restitution Center,
 - Jackson County, MS **Juvenile Center Addition**
 - Amite County, MS Detention Facility
 - Grenada County, MS Detention Facility
 - Grenada County MS **Juvenile Facility**
 - Tunica County, MS **Juvenile Facility**
 - Gautier, MS Police Complex
 - Ocean Springs, MS Justice Complex
 - Marshall County, MS Detention Facility Addition
 - Lee County, MS **Juvenile Facility**
 - Alcorn County, MS **Juvenile Facility**
 - Issaquena County, MS **Juvenile Facility**
 - Chambers Count, TX Jail Addition
- MS State Penitentiary, Parchman, MS
- Maximum Security Housing
 - Medium Security Housing
 - Medical/Dental Facility
 - Satellite Units
 - Modular Housing



BILL MITCHELL, P.E., P.L.S., CCM *Vice-President, Principal*

Professional History

Mr. Mitchell is a Registered Professional Engineer, Land Surveyor and Certified Construction Manager. He received a Civil Engineering Degree and Master's Degree in Public Policy and Administration from Mississippi State University. Mr. Mitchell has 42 years' experience in Civil Engineering and Construction Management and is very knowledgeable of construction practices and regulations along the Gulf Coast and within the State of Mississippi.

As a Principal of Brown, Mitchell & Alexander, Inc., Mr. Mitchell is directly responsible for many functions of this active and progressive civil / consulting engineering firm. In addition to coordinating the conceptual design and construction administration for private and public projects, he has been actively involved in the civil engineering study and design of numerous projects related to water, sewer, and storm drainage; road and highway improvements; and beach erosion / beach renourishment for various municipal and county governments.

As Vice-President and Sr. Project Engineer, Mr. Mitchell offers extensive management and engineering skills to any project.

Related Experience

Mr. Mitchell's specific experience and notable projects include, but are not limited to, the following:

- Ilmenite Handling Facility (DuPont)(MS State Port Authority)
- Program Mgt and Design Consulting Engineer (Hancock Co. Utility Authority)
- Bay St. Louis Municipal Harbor (City of Bay St. Louis)
- Consulting Engineer (Harrison Co. Board of Supervisors)
- Bert Jones Yacht Basin Dredging, Bulkhead & Pier Repairs (City of Gulfport)
- Hancock County Beach Renourishment Project (Hancock Co. Board of Supervisors)
- "Big Chill" – Turbana Chillers at the Port of Gulfport (MS State Port Authority)
- Construction of Pier 7 at the Port of Gulfport (MS State Port Authority)
- Gulfport North Wastewater Treatment Facility (Harrison Co. Utility Authority)
- Flat Branch Drainage Improvements - (Harrison Co. Board of Supervisors)
- Gulfport Sportsplex - (City of Gulfport)
- Biloxi Recreational Complex (City of Biloxi)
- Tradition Community Development (Columbus Communities, LLC)

Experience 42 Years

Education
Mississippi State University
Bachelor of Science
Civil Engineering
1975

Mississippi State University
Master of Science
Public Policy and Administration
1987

Active Registration
Mississippi (PE #7752) / 1979
Mississippi (PLS #1749) / 1977

Professional Affiliations
Civil Engineering Advisory Board (MS
State University)

MS State University Foundation Board

Dean's Advisory Board (MS State
University)

Water Environment Federation (WEF)
Member

National Society of Professional
Engineers (former Member)

Mississippi Engineering Society (Past
President and Member)

American Council of Engineering
Companies (former member)

**Brown, Mitchell &
Alexander, Inc.**
Consulting Engineers

401 Cowan Road, Suite A
Gulfport, MS 39507
P (228) 864-7612
F (228) 864-7676
C (228) 380-7612
bill@bmaengineers.com

www.bmaengineers.com





BENJAMIN SMITH, P.E.
Vice President / Project Engineer IV

Professional History

Mr. Smith is an experienced Project Engineer with several years experience in road improvements, traffic analysis, private site plan design, drainage and stormwater detention design, utility design, municipal drainage projects, drainage studies, and water / sewer system analysis.

Notable projects with BMA consists of St. Patrick High School (including the Access Roads, Pump Station, Force Main & Water Well), Mississippi Power Operations Center, Flat Branch Gravity Sewer Interceptor and numerous drainage improvements projects for the City of Gulfport. He has been involved in the planning, engineering and permitting stages of numerous private development projects including residential and commercial subdivisions and retail developments.

Prior to his employment with BMA, Mr. Smith was a graduate research assistant at Mississippi State University where he conducted research funded by the Mississippi Department of Transportation (MDOT). The research was focused on evaluating the in-place service of asphalt mixes using accelerated testing procedures. Research results are being used by MDOT to develop new specifications that will enhance performance and reduce overall cost of asphalt pavements throughout the state. Mr. Smith has also made a presentation on "RESPONSIBLE SITE DESIGN: Implementing Innovative Post-Construction Storm-water Management Strategies, A Case Study" for the Grand Bay National Estuarine Research Reserve.

Experience
15 Years

Education

Mississippi State University
 Bachelor of Science
 Civil Engineering
 2002

Mississippi State University
 Master of Science
 Civil Engineering
 2004

Active Registration

Mississippi (PE #18333) / 2008

Professional Affiliations

American Council of
 Engineering Companies

**Brown, Mitchell &
 Alexander, Inc.**
Consulting Engineers

796 Viéux Marché
 Biloxi, MS 39530
 P (228) 436-7612
 F (228) 864-7676
 C (228) 380-2275

ben@bmaengineers.com

www.bmaengineers.com

Related Experience

Mr. Smith's specific experience and notable projects include, but are not limited to, the following:

- MGM Park (Civil) (Dale Partners, City of Biloxi)
- Golden Nugget Casino Expansion (Biloxi, MS)
- Silver Slipper Casino & Resort (Silver Slipper Casino Venture, LLC)
- Tradition Community Development—Misc Engineering Services (Private Developer)
- Operations Center (MS Power Company)
- St. Patrick High School (Site / Water Well / Sewer Pump Station/Access Road (Catholic Diocese of Biloxi)
- Downtown Streetscape Improvements, Phase 2 (City of Gulfport)
- New Ocean Springs High School (Ocean Springs School District)
- Pascagoula Promenade & Beachfront Walkway (City of Pascagoula)
- Creosote at Taylor Drainage Improvements (City of Gulfport)
- Florence Gardens Subdivision (Seaway Development Co.)
- Flat Branch Gravity Sewer Interceptor (Harrison County Utility Authority)





NICK GANT, PE

Project Engineer

MS PE# 26307

AL PE# 34830

University of Alabama
Bachelor of Science (2009)
Civil Engineering

**Brown, Mitchell &
Alexander, Inc.**
Consulting Engineers

796 Viéux Marché
Biloxi, MS 39530
P (228) 436-7612
F (228) 864-7676

nick@bmaengineers.com

www.bmaengineers.com

Mr. Gant is a Project Engineer with several years' experience with water, sewer and roadway infrastructure repairs, as well as site planning for large scale residential, commercial and recreational projects. He joined the BMA team in 2017 and is licensed in both Mississippi and Alabama.

Mr. Gant's specific experience and notable projects include, but are not limited to, the following:

Inspection:

- **SRF Troy Sewer Improvements** (Troy, Al)

Industrial:

- **Dongwon Autopart Expansion 2013** (Luverne, Al)

Commercial:

- **Foley Square, Phases I, II, and III** (Foley, Al)
- **Newk's Airport Boulevard** (Mobile, Al)

Recreational:

- **Eastside High School** (Montgomery, Al)
- **Oxford Recreational Facility** (Oxford, Al)

Residential:

- **New Park Apartments, Phase II** (Prattville, Al)
- **Woodland Creek, Phase 6** (Pike Road, Al)

Transportation:

- **Ann Street, Street & Drainage Rehabilitation** (Mobile, Al)
- **Roadway Inspection & Resurfacing** (Spanish Fort, Al)
- **College Park Elementary School Sidewalk SRTS** (Gautier, Ms)

Drainage:

- **Baldwin County FEMA Road Repairs** (Baldwin County, Al)
- **Spanish Fort Bluff Repairs** (Spanish Fort, Al)
- **Gautier Drainage Clearing** (Gautier, Ms)

Water:

- **Belforest Water Line Relocation** (Belforest, Al)
- **Gautier Transmission Mains** (Gautier, Ms)

Sewer:

- **Mobile Co. New Sewer Collection System** (Mt. Vernon, Al)
- **MAWSS Water and Sewer Improvements** (Mobile, Al)



MARK OTTO, P.S. *Survey Manager*

Professional History

Mr. Otto is a Professional Land Surveyor with experience in land and marine surveying. He has performed a wide variety of surveys including boundary and topographic surveys, construction layout, flood insurance elevations, tree surveys, and hydrographic surveys. He is also familiar with title and deed information as well as the preparation of easements.

Experience 24 Years

With BMA, Mr. Otto offers extensive coordination capabilities to the engineering staff for the interpretation of survey data as it relates to the construction of projects. He also has extensive experience in the use of the AutoCAD software program.

Education
University of South Alabama
Bachelor of Science
Geography
1993

As the Survey Manager, Mr. Otto coordinates the survey crews and associated surveying tasks for design projects. He is very knowledgeable of the three coastal counties and land development procedures relative to surveying.

Active Registration
Mississippi (PS #2868) / 2002

Related Experience

Professional Affiliations
Mississippi Association of
Professional Surveyors
(Member 2002—current)
(Southern District Director:
2011-2012, 2014-present)

Mr. Otto's specific experience and notable projects include, but are not limited to, the following:

**Brown, Mitchell &
Alexander, Inc.**
Consulting Engineers

401 Cowan Road, Suite A
Gulfport, MS 39507
P (228) 864-7612
F (228) 864-7676
C (228) 380-1229
mark@bmaengineers.com

www.bmaengineers.com

- City of Biloxi Benchmarks (Replacement after Hurricane Katrina) – City of Biloxi
- Mississippi Phosphates - Pascagoula, MS (1700+ acre ALTA survey)
- Biloxi Recreational Complex – City of Biloxi
- 1st & Pine Streets Drainage – City of Biloxi
- Golden Nugget Casino – Biloxi, MS
- Bay St. Louis / U.S. Highway 90 Bridge Repairs – MDOT
- Pass Road Signalization (ROW easements) – City of Biloxi
- Airport Perimeter Road – Topographic Survey – (Gulfport-Biloxi Regional Airport Authority)
- Construction of Pier 7– Pre and Post-Dredge Surveys (Mississippi State Port Authority)
- Harrison County Sand Beach Renourishment Project – Cross-section Surveys (HARCO Board of Supervisors)
- The Oaks Golf Course – Topographic and Boundary/ALTA Surveys – (Landmark National)
- Tradition Development – Topographic and Boundary/ALTA Surveys (Tradition Community Development Corp)
- Numerous lot layouts for several residential and commercial developments along the Mississippi Gulf Coast

Education
Mississippi State University
Bachelor of Science
In Electrical Engineering
1987

Active Registration
Mississippi
Alabama
Louisiana
Texas

CANON ENGINEERING, LLC

Victor Lachin III, PE

Victor Lachin III, PE Electrical Engineer – Principal

Education: Bachelor of Science in Electrical Engineering
Mississippi State University – 1987

Active Registration: MS 14047; LA 29568; AL 32201; TX 110875

Experience and Qualifications:

Victor has worked for Canon Engineering since 1989 and has two years previous employed with Houston Lighting and Power in the Special Projects and Street Lighting Department. He has designed electrical systems and supervised construction for federal, military, industrial, institutional and municipal facilities. In addition he has worked with Stennis Space Center, the Mississippi Bureau of Buildings, and FEMA to implement and coordinate design on a consultant and prime basis for both Design- Bid and Design-Build Projects. He has a close working relationship with flood plain managers in our local jurisdictions.

Victor's electrical design expertise includes site and roadway lighting, power distribution, medium voltage distribution, Fire Alarm, CCTV and Voice/Data networks and Green Design. Some of his most noteworthy engineering design is the electrical design of the Mississippi Gulf Coast Community College Underground Medium Voltage Distribution and Roadway Lighting Project, Infinity Science Center at Stennis Space Center, and over 15 megawatts of emergency generation systems in Harrison County.

Victor has designed the electrical systems for numerous vehicle and equipment maintenance shops, business office buildings, retail shops, marinas and associated support facilities and industrial facilities. Design experience in projects of this nature are relevant to facilities that require a broad range of knowledge in lighting selection and control, power distribution, data networking and surveillance needs.

He has designed the electrical, communications, security and CCTV design for two Juvenile Rehabilitation Facilities located in Harrison County and Brookhaven Mississippi. The work was performed for the State of Mississippi Bureau of Buildings guided by the requirements of the Mississippi Department of Mental Health. These projects consisted of an administration building, multiple dormitories, a classroom building and a physical plant building. Interior and exterior security, communications, door access, standby emergency power, and fire alarm systems meeting the requirements of the NFPA were the key elements noted in our design.

Victor was lead supervising electrical engineer and MEP project manager for the Ocean Springs Public Safety Facility. This project featured a two pod, eight cell inmate area, detox rooms, exercise areas, with office and support facilities outfitted with necessary security and communication systems.

As lead electrical engineer for the firm he is responsible for the review and administration of all electrical design projects to ensure coordination with other disciplines, project scope and code review. He supports the firms philosophy of sustainable design guidance for energy efficient

**CANON ENGINEERING,
LLC**

3419 Washington Ave.
Gulfport, MS 39507
P (228) 863-0728
F (228) 865-9618
C (228) 861-3780
vgl@canoneng.com

Education
University of Mississippi
Bachelor of Science
In Mechanical Engineering
2006

Active Registration
Mississippi

CANON ENGINEERING, LLC

Brent Richel, PE

Brent Richel, PE

Mechanical Engineer

Mr. Richel is the Mechanical Engineer for Canon Engineering. He has been with the company for over 10 years.

Education: Bachelor of Science in Mechanical Engineering
University of Mississippi - 2006

Active Registration: #21034 Mississippi

Experience and Qualifications:

Mr. Richel has designed numerous plumbing, fire protection and mechanical systems for commercial and municipal buildings and sites including: offices, schools, medical offices, National Guard centers, FEMA hurricane shelters, and historical renovations. Mr. Richel designs potable water, water service, sanitary, chill/hot water, refrigerant systems, and HVAC systems to meet the specific needs of the client. Mr. Richel has performed extensive research into codes and standards for sustainable design in coastal environments and applied those standards in a variety of applications.

As lead mechanical engineer for the firm, Mr. Richel is responsible for the review and administration of all mechanical design projects to ensure coordination with other disciplines, project scope and code review. He supports the firm's sustainable design philosophy and how a sustainable design can be balanced with a client's budget and needs. This concept provides the client a usable building with lower than average long-term energy costs.

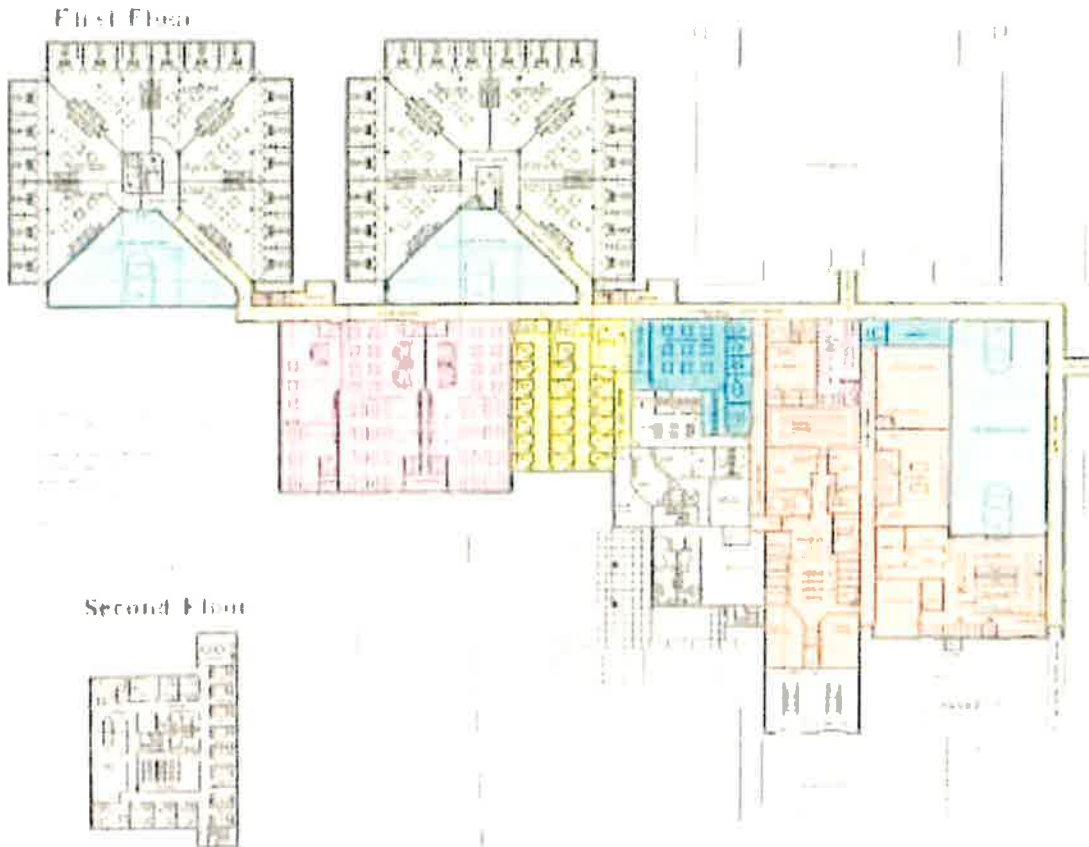
Mr. Richel is proficient with Building Information Modeling technology which reduces construction conflicts and provides an integrated building solution for the client.

CANON ENGINEERING, LLC

3419 Washington Ave.
Gulfport, MS 39507
P (228) 863-0728
F (228) 865-9618
C (228) 861-5454
bar@canoneng.com

MADISON COUNTY DETENTION CENTER
Canton, MS

William Lack served as associate architect working in conjunction with the prime architect in providing programming, planning and security consultation for the design of additions to the Madison County Justice Center which encompasses two maximum security (288-men) housing pod additions with new Intake/booking component, Jail Administration, and Support Services. Cost for the 92,000 sq. ft. addition are estimated at \$22 million. The project is currently awaiting funding.



GAUTIER PUBLIC SAFETY BUILDING
City Court & Administration, Police Headquarters
And Holding Cells
Gautier, MS

William Lack and Walter Bolton were project Architects in providing programming, planning, design, contract documents, security consultation and construction administration for the 8,500 sq.ft. renovation of an existing furniture retail facility at a cost of approx. \$80/sq.ft. The complex features offices for the City Police Dept., City Court Administration and Court Room, 911/Dispatch and Inmate Booking.



Gautier Fire Station
Gautier, MS

William Lack and Walter Bolton were project Architects in providing programming, planning, design, contract documents and construction administration of a 4,800 square foot dual apparatus fire station. The complex features full crew quarters with separate dayroom and kitchen.





OCEAN SPRINGS PUBLIC SAFETY BUILDING
City Court & Administration, Police Headquarters
and City Jail
Ocean Springs, MS

William Lack and Walter Bolton were project Architects in providing programming, planning, design, contract documents, security consultation, construction administration of 16,500 s.f. facility. The complex features offices for the City Police Dept., City Court Administration and Court Room, 911/Dispatch, Intake/Booking, Kitchen, and cells/dayrooms to house 16 inmates including H/C. Construction cost was 4.8 million.





RANKIN COUNTY DETENTION CENTER
Brandon, MS

William Lack served as associate architect working in conjunction with the prime architect in providing programming, planning and security consultation for the design of this county jail. The maximum/medium security housing pods were design to utilize off-site manufacturing of the cells which were transported to site complete with doors, windows, plumbing fixtures, lighting, electronics, and interior bunks/desk for placement within the building envelope.





FORREST COUNTY DETENTION CENTER
Hattiesburg, MS

William Lack served as associate architect working in conjunction with the prime architect in providing programming, planning and security consultation for the design of a 600-inmate detention facility. The 110,000 sq. ft. complex features offices for the Forrest County Sheriff, an Arraignment Court, 911/Dispatch, Intake/Booking, Kitchen, Maximum/Medium housing for 260 inmates, Minimum Security housing for 320 inmates, and 20 isolation cells. The construction cost was \$23.7 million.





WAVELAND MUNICIPAL COMPLEX
Waveland, MS

Walter T. Bolton served as project architect in providing programming, planning, design, contract document production, and construction administrator for City Municipal Complex. The complex consisted of the City Hall Facility (8,400 sf), City Hall Annex (10,800 sf) and Fire Station No.1 (8,600 sf). Two story cast in place concrete structure with brick and stucco exterior. Building designed and built to FEMA hurricane resistant standards with raised slab, impact resistant windows and doors, raised mechanical systems, and facility is under full generator power.





BILOXI PORT DIVISION ADMINISTRATION AND PUBLIC RESTROOM FACILITY

Walter T. Bolton served as project architect in providing programming, planning, design, contract document production, and construction administrator for the City of Biloxi. The facility houses the port administration offices, public restroom and harbor tenants shower rooms. The lower floor was rebuilt



POINT CADET HARBOR MASTER AND PUBLIC RESTROOM FACILITY, BILOXI, MS

Walter T. Bolton served as project architect in providing programming, planning, design, contract document production, and construction administrator for the City of Biloxi. The facility houses the Point Cadet Harbor Master's office, public restroom and shower rooms for the harbor tenants.



JASPER COUNTY JAIL
Bay Springs, MS

William Lack served as associate architect working in conjunction with the prime architect in providing programming, planning and security consultation for the design of this facility. Spaces within the building provide offices for the County Sheriff, plus a jail component with intake/booking, support services, recreation, and housing to accommodate 70 inmates. An important feature of the maximum/medium Security housing is that each two-man cell is equipped with a shower. This feature leads to long term cost cost savings.



FEMA 361 Emergency Shelters
Jackson County, MS



Walter T. Bolton served as project architect in providing programming, planning, design, contract document production, and construction administrator for three FEMA 361 emergency shelters for Jackson County. The 10,000 sf Shelters were funded and designed for use as FEMA 361 emergency shelters for the community during hurricane and other emergency evacuations. The facilities were designed to withstand 200 mph winds resistance and 100 mph impact resistance. The facility are laid out to be self-sufficient with full kitchen, underground water and sewer storage tanks, fully sprinkled with underground water storage tanks, mechanical equipment located in impact resistant structures, and full generator system to keep the facility in emergency operation for thirty-six (36) hours.



Harrison County Human Services Building

Biloxi, MS

Walter T. Bolton was project Architects in providing full Architect/Engineering services, and construction observation on the 10,400 sf office spaces, interview rooms, classrooms and food distribution/warehouse facility.



Harrison County Department Human Services Building – Biloxi, MS

Capacity for Performance

BMA believes that our Client Satisfaction Philosophy, Work Load Policy, Project Approach, Employee Experience & Utilization of the Latest Technology makes BMA stand out among other firms.

Employee Experience & Technology

An engineering firm is only as good as its personnel. With senior level managers supervising all aspects of the firm, their depth of knowledge and experience is constantly being taught to the new members of our team as we grow. Our employee retention says a lot about our team and work environment. Our employees on average have worked for BMA twelve years and many employees have been with the firm for fifteen years or more. BMA makes every attempt to seek out and employ the most qualified individuals (firms) for all available positions (work) and to provide equal employment opportunity for all applicants and employees (and sub-consultants).

Engineering Staff - The Engineering Department consists of engineers of all experience levels from senior staff to engineer interns. All of the engineering staff live along the Mississippi Gulf Coast, most of which grew up in the area. All BMA Engineering Staff have a wealth of knowledge relative to construction practices and regulations along the Gulf Coast. We feel our familiarity with this area gives us better insight to our client's needs and allows us to better assist our clients with providing the services they need. Our engineering staff strives to exceed our client's expectations. We are cognizant of the ever changing engineering environment and continue to learn and adapt to new technology and construction materials/techniques. The engineering staff maintains the necessary certifications required as listed on the individual resumes.

Certified Construction Manager – Mr. Mitchell earned certification in 2016 to become a Certified Construction Manager which allows the firm to provide Construction/Project Management services to our clients in order to advise and manage all aspects of a project, contributing to the control of cost and successful completion of a project within the scheduled time.

Construction Administration - Our field representatives are very experienced and are familiar with the latest construction techniques. The Resident Project Representatives ensure that the requirements set forth in project plans and specifications are followed by the contractors in the field and accurately document day to day field activities. We have field personnel on staffs that are certified in Erosion Control Inspection and Design and Operation of Work Zone Traffic Control. On average, our construction administrative staff has over thirty years of experience.

Environmental Services – With an environmental specialist on staff, BMA can provide numerous environmental services including wetland delineations, environmental site assessments, stormwater permitting, threatened and endangered species surveys, environmental due diligence, NEPA compliance and aquatics surveys. The extensive experience and expertise in the areas of wetlands & regulatory permitting and knowledge about the requirements of various Federal and State regulatory agencies such as the U.S. Army Corps of Engineers, Mississippi Department of Marine Resources and the Mississippi Department of Environmental Quality, ensures quality guidance to our design team through the often complex regulatory process.



Surveying Services – Our survey department has a complete survey staff available, with a full time Professional Licensed Surveyor, survey crew, and licensed UAV pilots. They utilize the latest advances in surveying technology including a Network RTK systems and Unmanned Aerial Vehicle (UAV) or “Drone” surveying. Our equipment provides sub-centimeter accuracy that is subject to minimal degradation by weather and reduces length of time in the field. Our range of equipment and expertise allows us to undertake survey work from tight urban areas to mapping very large parcels with limited accessibility such as wetlands, shorelines and hazardous environments. Our software and technology are fully compatible with AutoCAD, allowing the interchange of information with clients and sub-consultants. We have the right tools and experienced personnel to meet any situation.

Drafting/CADD Staff - The Drafting Department consists of CADD Operators & Designers with experience in drainage, water and sewer improvements, roadway improvements, site development, landscaping and marine projects (harbors, piers, boat launches). BMA keeps up with the latest CADD and modeling software available, which includes AutoCAD and Civil 3D/Storm & Sanitary Sewer Analysis and SiteOps. BMA also has the latest format printers, plotters, and large format scanners for preparation of construction documents. Utilizing state of the art computer software and hardware, BMA's team of designers and CADD Operators have the ability to work together in order to maximize BMA's resources to provide the best quality product for our clients. On average, our CADD Designers have over 30 years of experience in the drafting field.

Administrative Staff - The Administrative Staff (which includes receptionists, office managers, and Specification Writers) are a vital part of the project team. Working in conjunction with Project Engineers and Drafters, the Administrative Staff ensures that bid & contract documents and reports are prepared in a timely and professional manner. In addition, they work closely with the clients and funding agencies to ensure invoicing is easy to understand and in the proper formats. On average, our administrative staff has twelve years of experience at BMA and over 20 years' experience total.

Office Locations

BMA currently has three (3) offices conveniently located in Gulfport, Biloxi and a satellite office in Pascagoula, MS. We will assign staff accordingly to be most effective for the project location and scope. Resumes of the key personnel to be assigned to this project are included in this proposal.

RELATED EXPERIENCE

Brown, Mitchell & Alexander, Inc. (BMA) has 50 years of experience in project management, civil engineering, surveying, construction administration, and environmental permitting. We have completed a variety of projects utilizing public funding and related documentation. Our extensive experience with grant funding sources, along with our familiarity with critical issues such as utilities, drainage, wetlands, permits and traffic patterns enables our firm to provide the full scope of services to meet our client's needs.

Notable projects in which BMA has provided services similar in scope to the one proposed include:

USM MARINE RESEARCH FACILITY

for University of Southern Mississippi – Gulfport, MS



Marine Research Facility Rendering

In conjunction with the Mississippi State Port Authority (MSPA) and The University of Southern Mississippi's (USM) School of Ocean Science and Technology, the new USM Marine Research Center project at the Port of Gulfport is set to be completed in early 2018.

The unique two-story building will encompass nearly 18,000 square feet. Upon completion, the \$12 million structure will be the principal marine

operations and support facility for USM's oceanographic research efforts, as well as enhance and beautify the industrial "front door" of the Port of Gulfport. The building will include administrative offices, classrooms, laboratories and storage areas.

Eley Guild Hardy Architects of Biloxi is overseeing the design, and the project is currently under construction by Wharton Smith. BMA was selected to provide civil sitework design.

PHARMACY SCHOOL

for William Carey University – Tradition, MS



Pharmacy School Rendering

Brown, Mitchell & Alexander, Inc. (BMA) provided civil engineering, off-site utility extensions, permit coordination and construction phase services for the construction of the Pharmacy School building on the campus of William Carey University located at Tradition Community

RELATED EXPERIENCE

Development in Harrison County, MS.

The project was planned to meet the aesthetic requirements of the Master Planned Community and to avoid nearby wetlands.

Civil design services included site layout plans, grading and drainage plans, erosion control plans and off-site water and sewer system extensions.

WATER & SEWER IMPROVEMENTS for THE LEARNING & WELLNESS COMMONS AT TRADITION

for Harrison County Board of Supervisors - Tradition, MS



Tradition Campus Rendering

Harrison County Board of Supervisors needed assistance in developing a water distribution and sewer collection system extension in the new Tradition Learning & Wellness Commons development pursuant to EDA and DIP(MDA) grant agreements. BMA has been able to assist the county with extensive coordination with the US Dept. Of Commerce Economic Development Administration's (EDA)

rigorous grant documentation process that requires EDA review and approval of all Plans and Specifications.

Specific Professional Services included Civil Design; Topographic Survey and Easement Exhibit; Development of Contract Documents, Specifications, and Construction Plans; Construction Administration and Observation Services; and MDEQ & MDOH Permitting Assistance.

MGCCC NURSING SCHOOL & SIMULATION CENTER

for MCGCCC - Tradition, MS



Nursing School Construction

Brown, Mitchell & Alexander, Inc. (BMA) is currently working as a member of a design team with the Architects to provide professional engineering services for the design and construction of the MGCCC Nursing School and Simulation Center located at the Tradition Learning & Wellness Commons campus.

Due to our long history with the



**BROWN, MITCHELL
& ALEXANDER, INC.**



RELATED EXPERIENCE

Tradition Developer and familiarity with the site, BMA was involved with the preliminary stages of this project before final planning began. In addition, our project management capabilities and our environmental expertise provided the necessary coordination efforts with MDA to approve the NEPA document for this project which led to the release of funding and in turn, kept the project on schedule.

GULFPORT HIGH SCHOOL RENOVATIONS

for Gulfport School District - Gulfport, MS



Brown, Mitchell & Alexander, Inc. (BMA) was hired to provide professional engineering, environmental permitting and surveying services for the Gulfport High School Renovations Project. BMA's tasks include design, bidding assistance, and construction phase assistance along with state agency permit support.

BMA provided surveying and civil engineering including grading and drainage, earthwork, erosion control, water and sewer for the campus renovation. Because of existing drainage problems on and around the campus, we additionally provided an off-site drainage study in conjunction with the City of Gulfport to review alternatives and costs for drainage improvements. This result is a cost-effective solution with participation including the City of Gulfport and Gulfport School District.

RELATED EXPERIENCE

OPERATIONS CONTROL CENTER

for Mississippi Power Company



MS Power Operations Center

The Mississippi Power Operations Center is a storm readiness center that consists of an 81,000 SQ FT building including an access road, parking area, an off-site pump station & force main and other related infrastructure. Brown, Mitchell, & Alexander, Inc. was the Civil Engineer of record for the project with tasks including design and construction administration of the site improvements including site utilities, roadways, parking areas, and storm-water facilities.

Included in our services was preparation of the Erosion Control Plan for the project and working with MSPCO permitting officials relative to the necessary MDEQ permits. BMA utilized a number of during-construction and post-construction Best Management Practices outlined in MDEQ's guidance manual. BMA was also responsible for observing the installation of the storm-water improvements along with advising the general contractor during site storm-water erosion control site inspections. Construction costs for this portion of the project were approximately \$3 million.

**Contact: Sharon Turnipseed, Real Estate Coordinator (228) 865-5993 /
sturnip@southernco.com**

3 – CAPACITY FOR PERFORMANCE

The B/L, PLLC team has ample capacity to deliver the Architectural and Engineering services for Harrison County juvenile Detention Center.

By the combination B/L and our consulting engineers, our team has over forty four (44) staff members totally dedicated to facility design and construction. With that in mind, the availability of architectural and engineering staff will not be a limiting factor for our team to meet any reasonable schedule, no matter how accelerated.

At this time, given the limited information, we are concerned that the requirement to submit a “estimated time required to accomplish each phase of the project” as stated in the RFQ will be hard to determine with any accuracy.

Again, based totally on our limited understanding of the current status of the project, the following is based on our control of only our production.

- Meet with user to start programming -----45 days
Develop finalized building program
Develop preliminary design and estimate of cost
- Develop final design and construction documents-----90 days
- Issue Bid Package-----45 days
Receive Bids for construction
Select successful construction firm
Authorize construction firm to start work

Total time estimated for production-----180 days
(time could vary based on submittals and approval turn around)

Our team has years of experience in working with clients to identify and develop most optimum project schedules, and in helping them to achieve those schedules. We would be eager to work with Harrison County in this manner.

Once a final schedule is adopted, we are confident that our team has the resources to respond in an acceptable manner.

BOLTON/LACK OFFICE LOCATION MAP



The Biloxi office of Bolton/Lack, PLLC is located at 124 Fayard Street approximately three and a half blocks from the new Harrison County Juvenile Court Facility on Esters Blvd.