

**RECEIVED**  
JUN 07 2017  
Chancery Clerk  
BY: *[Signature]* D.C.

# BURK-KLEINPETER, INC.

ENGINEERS, ARCHITECTS, PLANNERS, ENVIRONMENTAL SCIENTISTS  
2113 GOVERNMENT STREET, BUILDING B, SUITE B-1  
OCEAN SPRINGS, MS 39564

TELEPHONE (228) 875-1919

FAX (228) 875-1072

**BURK-KLEINPETER, INC. REQUEST FOR QUALIFICATIONS FOR:  
PROFESSIONAL SERVICES TO DESIGN AND CONSTRUCT A  
JUVENILE DETENTION CENTER IN HARRISON COUNTY,  
MISSISSIPPI**

**ORIGINAL**

**BURK-KLEINPETER, INC. REQUEST FOR  
QUALIFICATIONS FOR: PROFESSIONAL SERVICES TO  
DESIGN AND CONSTRUCT A JUVENILE DETENTION  
CENTER IN HARRISON COUNTY, MISSISSIPPI**



JUNE 26,  
2017



**BURK-KLEINPETER-LUNSFORD**  
ENGINEERS / ARCHITECT, PLLC

June 26, 2017

Harrison County Board of Supervisors  
c/o Chancery Clerks Office  
Post Office Drawer CC  
Gulfport, Mississippi, 39502

Re: BURK-KLEINPETER, INC. REQUEST FOR QUALIFICATIONS FOR: PROFESSIONAL SERVICES TO DESIGN AND CONSTRUCT A JUVENILE DETENTION CENTER IN HARRISON COUNTY, MISSISSIPPI

To Whom It May Concern:

In response to your Request for Qualifications for the above referenced project, Burk-Kleinpeter-Lunsford, Engineers / Architect, PLLC, along with Accurate Controls and Peach Engineering is pleased to submit one original and five copies of our Statement of Qualifications.

BKL is a consulting architectural firm that offers architectural design and construction administration services. Our broad range of experience includes both private sector and public work, specializing in municipal, commercial, educational, medical, financial, retail, and other projects throughout the Southeast.

BKL's Ocean Springs office will serve as the managing office for the County with Chris Lunsford, AIA, NCARB serving as the main contact.

Christopher N. Lunsford, AIA, NCARB – Vice President  
2113 Government Street, Building B, Suite B-1, Ocean Springs, MS, 39564

As appropriate and according to staff expertise and location, assignments may go out to the following offices in addition to the offices listed above. However, the Project Manager and managing office will remain as designated above.

- BKL New Orleans Office: 4176 Canal Place, New Orleans, LA
- BKL Ocean Springs Office: 2113 Government Street, Building B, Suite B-1, Ocean Springs, MS 39564

As reflected in the enclosed documents, the BKL team is highly qualified to complete the project tasks involved in a timely and efficient manner. We have endeavored to highlight our qualifications in accordance with your submission requirements, and as such, our Statement of Qualifications includes a response to the scope of work.

We appreciate this opportunity to submit our qualifications and look forward to working for Harrison County.

Sincerely,



J.W. "Bill" Giardina, Jr., P.E.  
Principal





# INTRODUCTION



## FIRM PROFILE

BURK-KLEINPETER-LUNSFORD, PLLC (BKL) is a consulting architectural firm that offers architectural design and construction administration services. Our broad range of experience includes both private sector and public work, specializing in municipal, commercial, educational, medical, financial, retail, and other projects throughout the Southeast.

### HISTORY

BKL is a professional limited liability company practicing architecture in the state of Mississippi. Chris Lunsford, AIA, NCARB is a registered architect of the professional limited liability company. All other members are principals with Burk-Kleinpeter, Inc. (BKI), a 100 year old engineering firm with over 100 staff of engineers, designers, and other technical staff in several offices located in Alabama, Mississippi, and Louisiana. Chris Lunsford manages the architectural work in the state of Mississippi; and, BKI's Mobile, AL operations currently support both engineering and architectural work in the Mobile, AL area and along the Mississippi gulf coast.

### LOCATIONS

BKL is located at 2113 Government Street, Building B, Suite B-1, Ocean Springs, MS, 39564, and was formed in 2013. BKL's Ocean Springs office is supported by other offices to provide the following architectural services:

- Conceptual/Schematic/Final Design Development
- Coordination of other design disciplines (i.e. Civil, Geotechnical, Mechanical, Electrical and Structural Engineering, Etc.)
- Preparation of construction documents for bidding purposes/cost estimating
- Assistance with construction bidding and contract negotiation
- Construction administration
- Participation in design conferences and reviews

Our resumes and project experience clearly demonstrate BKL's experience in all phases of architectural design for both new and existing educational facilities.

BKL's Gulf Region, AL offices consist of 11 design professionals and supporting staff. However, our office is supported by other offices and staff who are ready and able to deliver on work that requires a short turnaround to meet bid and construction schedules.

### CAPACITY FOR PERFORMANCE

BKL's current workload and future project schedules are such that we can commit our technical and support staff to meeting the requirements of this contract and fulfilling its assignments. BKL is committed to providing specialized, professional services as required under this contract. We have chosen our team based on proven technical and managerial track records. We are committed to providing timely performance of work to our clients and can afford to give individualized attention to keeping you abreast of each phase of the project. BKL is highly accessible and can be reached on very short notice to meet with clients as requested or required for each project.

BKL's past performance attests to its capacity to handle a reasonably large number of projects concurrently without any reduction in quality of design. Our present workload is such that we are able to commit the appropriate resources, including





## PROJECT EXPERIENCE



## JACKSON COUNTY ADULT DETENTION CENTER

As a consultant to the Jackson Board of Supervisors, Burk-Kleinpeter-Lunsford, Engineers / Architect, PLLC (BKL) was responsible for the design of a new adult detention center for the Jackson County, MS Board of Supervisors.

In January of 2014, work began with the placement fill site. The area was raised over seven feet in some places to meet the FEMA flood regulation. Foundation work continued for eight months with the installation of over 800 – 14" diameter auger cast pilings 60 feet deep. These pilings serve as the foundation for the building and support the structure.

The building itself is a 104,000 SF typical metal building with steel columns and beams with metal roof and wall panels. .

The facility is broken down into three separate pods that are each in a hub and spoke design with the control room in the center and the inmate day rooms splayed out in a circular fashion. The day rooms contain the cells for inmates. There are 21 different types of cells in the facility ranging from detox and intox cells in the booking area to two and four bank cells in the dayrooms. Each of the cells are prefabricated steel units that were built off site and delivered as a unit. The contractor then placed the cells in the proper locations throughout the facility and welded them in place.

In addition to the day room and inmate areas, the ADC is equipped with a fully operable kitchen for food service and laundry facilities



for cleaning linens and clothing items. There is a medical area with exam rooms and dental rooms. The facility has video visitation for family and will also have video court arraignment.

One of the most important aspects of this building is that it has been constructed to withstand 150 mph winds. It is also equipped with an 1150KW diesel-powered generator, capable of operating the entire facility in the event of a power outage. This means inmates and staff may shelter in place and will not have to be relocated in the event of a hurricane or other storm events.

**LOCATION**  
Pascagoula, MS

**CLIENT**  
Jackson County

**SERVICES**  
Civil Engineering  
Structural Engineering  
Mechanical Engineering  
Electrical Engineering  
Design Documents  
Construction Administration

BKL 05.12.004



## RIVARDE DETENTION CENTER & JUVENILE ASSESSMENT CENTER

Burk-Kleinpeter-Lunsford, along Burk-Kleinpeter, Inc., was retained by the Jefferson Parish Council to provide preliminary and final design and contract administration for an office building and Juvenile Assessment Center.

BKI helped the three agencies that will occupy the center choose the best site on the Rivarde campus for the new building.

BKI developed a project time schedule, a construction budget, a floor plan for the building with the best possible spatial relationships between the eleven departments of the three agencies, and all construction and contract documents.

The design of the Juvenile Assessment Center required in-depth meetings with the Juvenile Division of the Jefferson Parish Sheriff's Office to incorporate the division's special needs. Although the Juvenile Justice Center is essentially an office building, the Juvenile Division wanted the JAC to look and feel like a jail to ensure that juvenile offenders realized the seriousness of their situations, to prevent escape, and to ensure the safety of the staff and visitors.

The new building was approximately 107,884 square foot total. The addition added 33,232 square feet of administrative space and 3,200 square feet for the Juvenile Assessment Center.

The estimated construction cost was approximately \$3.5 million.



LOCATION  
Harvey, LA

CLIENT  
Jefferson Parish Department of  
Public Works

SERVICES  
Needs Assessment  
Architectural Design  
Plumbing Design  
Structural Engineering  
Civil Engineering  
Construction Administration

BKI 9868



# JEFFERSON PARISH CORRECTIONAL CENTER EXPANSION

Burk-Kleinpeter-Lunsford, along Burk-Kleinpeter, Inc., was contracted by Jefferson Parish to provide design services and construction administration for a 482-bed expansion and infrastructure upgrade of the existing correctional center.

The project consisted of the development of construction drawings and specifications, construction administration for the correctional center's expansion, complete renovation and upgrade of existing inmate booking, property storage, commissary space, staff locker room, shower facilities, muster room, administrative offices, kitchen, medical, and laundry facilities.

BKI's construction administration duties included review and clarification of shop drawings; design changes; review of monthly contractor's invoices; preparing contract change orders; full-time resident inspection; and coordinating the work of the testing laboratory.

The project included renovation of 35,000 square feet and added almost 110,000 more square feet. The finished building is almost 215,000 square feet. Construction cost was approximately \$20.3 million.

*New Orleans Bayou Chapter of Associated Builders & Contractors' Excellence in Construction*



LOCATION  
Gretna, LA

CLIENT  
Jefferson Parish Department of Public Works

SERVICES  
Project Management  
Architectural Design  
Structural Engineering  
Civil Engineering  
Plumbing Design  
Construction Administration  
Resident Inspection

BKI 9751-03

## NEW ADDITION AT GRETNA POLICE HEADQUARTERS

Burk-Kleinpeter-Lunsford was selected along Burk-Kleinpeter, Inc. to provide the initial project scope and final design to the City of Gretna for the design and construction of a new three story office structure to be constructed in place of a portion of the existing structure currently being occupied by the Gretna Police Department (GPD).

BKI provided the civil, structural, electrical and mechanical design for the new three story office area (approx. 13,200 sf) for the GPD to use as office and communication areas.



The building foundation is supported by 14" sq. precast concrete piles (80' long). The foundation for the structure is a reinforced concrete slab elevated three feet above the existing site and has a reinforced concrete retaining wall around the building perimeter. The building superstructure is a structural steel building with the second, third and roof floor systems having a concrete slab in a metal pan supported by metal bar joists.

BKI provided the design for the building HVAC and plumbing in accordance with the latest mechanical and plumbing building codes. The fire suppression system was designed for this structure with specific dry resin protection in the communication equipment areas.

BKI provided the electrical design for the building lighting (interior and exterior), the power distribution, communication coordination and backup generator power.

The estimated construction cost for this project was \$4,400,000.00. Total Grant

Funding included \$1,600,000 from FEMA and \$2,400,000 from CDBG.

**LOCATION**  
Gretna, LA

**CLIENT**  
Gretna Police Department

**SERVICES**  
 Civil Engineering  
 Structural Engineering  
 Site Development  
 Load Calculations & Analysis  
 Fire Alarm System & Protection  
 Lighting Design & Protection  
 Generator System  
 Cost Estimates  
 Flood Mitigation  
 Existing Building Demolition

BKI NO.12.007

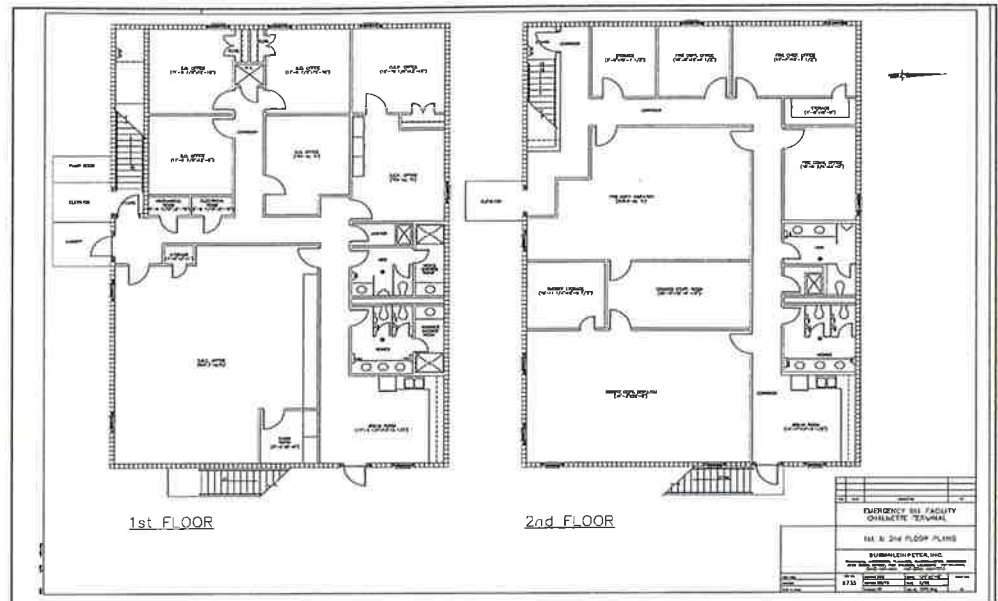


## ST. BERNARD SHERIFF'S DEPARTMENT 911 FACILITY

Burk-Kleinpeter-Lunsford, along Burk-Kleinpeter, Inc., was contracted by St. Bernard's Sherriff Department to design a new 911 telecommunications center to house dispatchers and emergency personnel.

The Sheriff's Department leased four acres from the Port to place the E911 command center, the motor pool, storage yard, and a minimum security jail. BKL provided a proposed floor plan for the Sheriff's Department staff. The floor plan was for a 6,000 sq. ft. two-story facility.

BKL had prepared a budgetary estimate for a 5,000 sq. ft. building. The estimate considered a concrete block building and a steel frame, steel skin building. The estimated costs were approximately \$540,000 and \$470,000 respectively.



### LOCATION

St. Bernard Parish, LA

### CLIENT

St. Bernard's Sheriff Department

### SERVICES

Topographic Surveys  
 Preliminary & Final Plans  
 Plans & Specifications  
 Cost Estimates

BKI 9735



## DRYADES YMCA NATATORIUM AND WELLNESS CENTER DEVELOPMENT

Burk-Kleinpeter-Lunsford, along Burk-Kleinpeter, Inc., was contracted by Dryades YMCA to perform the design and oversee the construction of the new Dryades YMCA Natatorium and Wellness Center.

The building is a new two-story structure (approximately 25,000 square feet) concrete structure constructed adjacent to the existing Dryades YMCA building in New Orleans, LA. The first floor of the building contains a 75' L x 45'W Olympic size swimming pool with depths ranging from 3'-6" deep to 7'0" deep, equipment and storage rooms, shower and locker room facilities, and restroom facilities. The second floor contains a 5,000 square foot wellness facility, men's and women's locker rooms, mechanical and electrical equipment rooms and office space.

The entire building is constructed on a reinforced, cast-in place concrete foundation that is supported on composite pilings. The building main frame support structure is a cast-in place, reinforced concrete column and beam system. The beam connection to the columns on the roof and second floor locations are designed as rigid connection points to prevent drift and deflection.

The second floor wellness center is constructed with pre-cast concrete tee panels that were constructed at an offsite facility and installed in place. The precast, pre-stressed tee panels were topped with a fiber reinforced concrete topping slab to provide a uniform surface for the athletic flooring to be installed. The first floor interior wall systems are concrete filled CMU



block with reinforced cells at 16" O.C. The CMU block wall system will resist the harsh chemical that are required to regulate the natatorium pool water.

The building roof is a combination of a standing seam roof over the wellness center portion of the building, and a built-up asphalt roof installed on a poured in place concrete slab roof deck over the remaining roof area.

LOCATION  
New Orleans, LA

CLIENT  
Dryades YMCA

SERVICES  
Structural Design  
Construction Administration

BKI 10392

# DEPARTMENT OF HEALTH AND HUMAN SERVICES LABORATORY SITE REDESIGN



**BKL**

Burk-Kleinpeter-Lunsford, along Burk-Kleinpeter, Inc., developed the site for a new Department of Health and Human Services Laboratory in New Orleans. BKL's design included improvements to utilities (water, sewer, and drainage), parking and driveway pavement layout and geometry, grading, and all other necessary improvements to the site to facilitate the new laboratory.

LOCATION  
New Orleans, LA

---

CLIENT  
Crump Wilson

---

SERVICES  
Site Development

---

BKL 9365-02

## CITY OF HAMMOND VA CLINIC SITE DEVELOPMENT

Burk-Kleinpeter-Lunsford, along Burk-Kleinpeter, Inc., was retained as a consultant to design and provide construction administration for the complete site development of a VA medical clinic building in Hammond, LA for the VA Medical Clinic. The Outpatient Clinic was a 10,000 sq. ft. building completed in 2006.

BKI designed all site utilities, including water distribution, sewer collection, sewer lift station and force main, site electrical distribution, and site parking lighting.

The firm also designed all paving, including all perimeter access roads and parking for the medical clinic. In addition, the firm designed engineering services in preparation for the acceptance and installation of a modular medical clinic.

BKI provided construction administration services during the construction phase.



LOCATION  
Hammond, LA

CLIENT  
VA Hospital

SERVICES  
Site Plan  
Drainage & Parking Design

BKI 10319

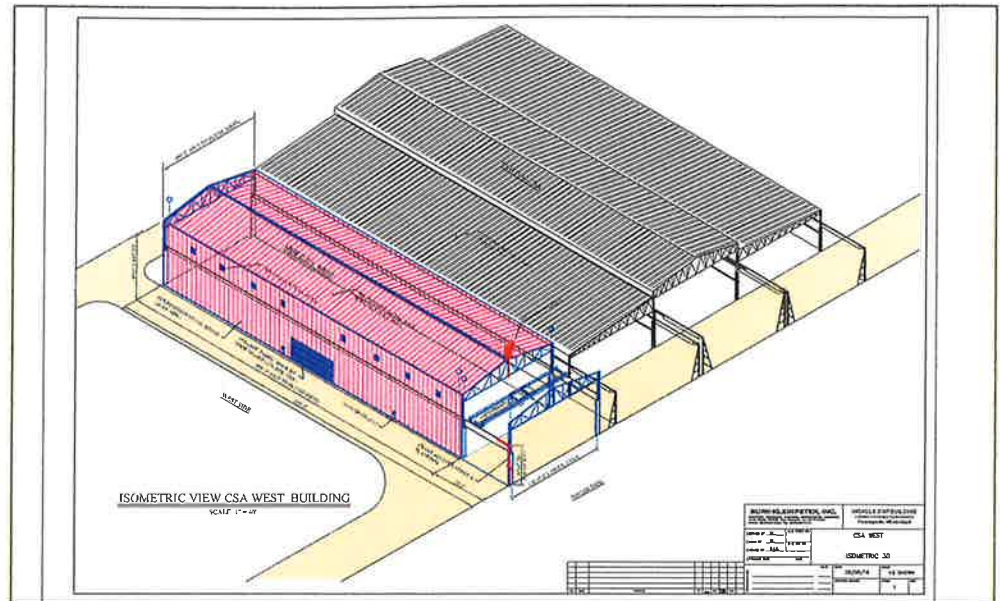


## CSA WEST EXTENSION ENGINEERING

Burk-Kleinpeter-Lunsford, along Burk-Kleinpeter, Inc., provided the relocation design package for the relocation of the existing bulk gas plant, compressor building and GFE storage building.

Mechanical work on this project included the following: The replacement of a 370 ton cooling tower, two 150 gpm circulating water pumps, and numerous valves and fitting for piping ranging in diameter from 3 to 8 inches. The relocation of four 300 horsepower air compressors, two 1500 gallon air storage tanks, a water cooled dryer, and numerous valves and fitting ranging in diameter from 4 to 12 inches. The relocation of liquid argon, carbon dioxide, and oxygen storage tanks along with vaporizing heat exchangers, flow meters, pressure reducing valves, control valves, etc and auxiliaries and piping associated with the storage and transfer of compressed gases uses for welding services. The upgrade of a mechanical building ventilation system by replacing of fans and installation of additional louvers to improve fan intake condition. The relocation of existing 15 ton chilled water unit and corresponding air handling unit.

The electrical design associated with the GFE storage building consisted of new interior/ exterior power and lighting. Fluorescent fixtures were used for interior lighting. A new electrical service was established from unit substation ILC3. The relocation of the North Compressor Station consisted of the decommissioning the existing 3750 kVA unit substations and electrical distribution associated with the 480 volt compressor distribution system. The unit substation



and compressor buildings were reconstructed at a new location. New medium voltage duct banks, manholes, and vaults were constructed to support the new unit substation. All existing equipment in the compressor station was reinstalled at the new location. Existing unit substation ILC019 was the source of power for the electrical distribution system for the CSA West Extension. The CSA West Extension design consisted of power distribution for overhead cranes, welding equipment, exhaust fans, high-bay lighting, and power and lighting designs to support the two Lean-To office spaces.

Estimated Completion Date 2/2017

Total Project Cost \$3,341,000

LOCATION  
Pascagoula, MS

CLIENT  
Huntington Ingalls Shipbuilding

SERVICES  
Document Control  
Structural Design  
Mechanical Design  
Electrical Design  
Plans and Specifications

BKI NO.15.034

## NGSB UNIT SUBSTATION VAULT

Burk-Kleinpeter-Lunsford, along Burk-Kleinpeter, Inc., was contracted by Northrop Grumman Shipbuilding, Inc. The Unit Substation Vault project consisted of approximately 4 concrete filled block wall structures that were constructed on top of the existing equipment slabs. The vaults consisted of two 2,000kva and two 3,750kva unit substation transformers and were complete with custom 13.8kv primary air switches, 13.8kv/480v unit substation transformers and walk-in low voltage distribution switchgear with draw-out circuits.

The vaults were used to elevate the electrical unit substations approximately 12 feet above grade. These vaults were separated into high voltage and low voltage compartments that contain the incoming and outgoing distribution conductors. By elevating the unit substations on these vault structures, this equipment was protected against future storm events equal to Hurricane Katrina in 2005.

Construction cost was approximately \$4 million.



LOCATION  
Gulfport, MS

CLIENT  
Northrop Grumman  
Shipbuilding, Inc.

SERVICES  
Electrical & Mechanical Design  
Plans & Specifications

BKI 10426





## EMPLOYEE EXPERIENCE





## COMPANY ORG CHART



# BKL

### PRINCIPALS-IN-CHARGE & QA/QC

MICHAEL G. JACKSON, PE  
*Executive Vice President (BKI)*  
MICHAEL D. CHOPIN, PE  
*Principal (BKI)*

### PROJECT MANAGER

CHRISTOPHER N. LUNSFORD, AIA, NCARB  
*Vice President - Architect*

### ELECTRICAL ENGINEERING

PERRY P. HOGAN, PE  
*Vice President (BKI)*

J. BART MULLIS, III, PE, LEED AP  
*Electrical Engineer (BKI)*

### MECHANICAL ENGINEERING

ANTHONY C. MOSCHELLA, PE  
*Vice President (BKI)*

ROBERT D. BREDBERG, PE  
*Senior Sanitary Engineer (BKI)*

DANIEL S. CALUDA, JR.  
*Mechanical Designer (BKI)*

LEWIS J. BERNARD, PE  
*Mechanical Engineer (BKI)*

### STRUCTURAL ENGINEERING

SURESH I. SHAH, PE, SECB  
*Senior Vice President (BKI)*

ERIC CHIN, PE  
*Structural Engineer (BKI)*

ALI Z. TAREH, MS, PE, SE  
*Structural Engineer (BKI)*

RHETT J. MOUTON, EI  
*Structural Engineering Intern (BKI)*

### CIVIL ENGINEERING

HENRY M. PICARD, III, PE, PLS  
*Vice President (BKI)*

MARK K. ROBERTS, PE  
*Vice President (BKI)*

MATTHEW C. ROGERS, PE  
*Civil Engineer (BKI)*

### ARCHITECTURE

NICHOLAS W. GRAY  
*Architecture Intern*

### MECHANICAL, PLUMBING & FIRE PROTECTION

PEACH ENGINEERING

### SECURITY AUTOMATION

ACCURATE CONTROLS

# MICHAEL G. JACKSON, PE

## Executive Vice President & Chief Engineer

### Education

Master of Science in Civil Engineering, Tulane University 1980

Bachelor of Science in Civil Engineering, Louisiana State University 1971

### Registrations

Professional Engineer  
State of LA No. 15148

Professional Engineer  
State of TX No. 85146

Professional Engineer  
State of FL No. 56416

### Memberships

American Society of Civil Engineers

Society of American Military Engineers

Construction Specifications Institute

### Continuing Education

The American Traffic Safety Services Assoc.  
*Traffic Control Technician – LA State Specific*  
Training Course, 2015

The American Traffic Safety Services Assoc.  
*Traffic Control Supervisor – LA State Specific*  
Training Course, 2015

As Executive Vice President and Chief Engineer, Mr. Jackson provides oversight on project staffing and resource allocation. His 46 years of experience involves providing professional consulting services to numerous public and private clients throughout the Gulf Coast region. In that capacity, Mr. Jackson has supervised projects ranging from transportation planning to engineering design and construction supervision. His specific areas of expertise include municipal roadway improvements; highway and bridge design; hydraulic modeling, coastal restoration and coastal hydraulic structures; sewer and water system design and rehabilitation; drainage design and flood control; and construction administration. Many of Mr. Jackson's projects have garnered awards and commendations from clients such as the Louisiana Department of Transportation and Development and the U.S. Army Corps of Engineers. His recent work includes highway and bridge design; highway feasibility and environmental studies; passenger rail transportation consulting; drainage engineering design; as well as other related consulting services. Mr. Jackson is also a member of the American Society of Civil Engineers, the Construction Specification Institute, and the Society of American Military Engineers. Mr. Jackson also attended the *Traffic Control Technician – LA State Specific* and the *Traffic Control Supervisor – LA State Specific* training courses for The American Traffic Safety Services Association in 2015.

### Experience Highlights

**Rivarde Detention Center & Juvenile Assessment Center - Harvey, LA** - Design of a new office building to house 11 departments of three agencies serving juvenile justice, including the Juvenile Assessment Center. Services provided were: programmatic design, design development, preliminary and final plans and specifications, cost estimates, contract documents, and contract administration.

**NGSB Gulfport Unit Substation Vault** - Gulfport, LA - Principal: Oversaw Document Preparation (plans and specs), Review of submittals and shop drawings, Coordination with contractor to resolve requests for information.

**CSA West Extension Engineering - Pascagoula, MS** - Provided Quality Control/Quality Assurance to supply Ingalls with detailed packages for the relocation of an existing storage building, compressor station, and bulk gas plant and the construction of a brand new CSA Facility west of the shipyard's existing CSA.

**City Of Hammond VA Clinic Site Development - Hammond, LA** - Provided oversight during the design and construction for the site development of a VA medical clinic building in Hammond, Louisiana, including all site utilities, including water distribution, sewer collection, sewer lift station and force main, site electrical distribution, and exterior lighting, all paving, including all perimeter access roads, parking for the medical clinic, as well as construction administration services during the construction phase.

**Department of Health and Human Services Laboratory Site Redesign - New Orleans, LA** - Provided oversight for the site development for a new Department of Health and Human Services Laboratory in New Orleans

## MICHAEL D. CHOPIN, PE

*Principal*

### Education

Bachelor of Science in  
Civil Engineering,  
University of New Orleans  
1991

### Registrations

Professional Engineer  
State of LA No. 26797

Professional Engineer  
State of FL No. 56401

### Memberships

Society of American  
Military Engineers

American Society of Civil  
Engineers

Mr. Chopin is a Principal in charge of personnel, including schedules, staff, budgets, technical review and account management. He has over 25 years of professional engineering experience, and has provided professional consulting focused on a wide range of public works projects. He has served as Project Manager or Project Engineer on numerous drainage studies, hydraulic models and designs, drainage improvement, levees, floodwalls, flood control projects, roadways, and site development. He is also a member of the American Society of Civil Engineers and the Society of American Military Engineers.

### Experience Highlights

**CSA West Extension Engineering - Pascagoula, MS** - Provided Quality Control/Quality Assurance to supply Ingalls with detailed packages for the relocation of an existing storage building, compressor station, and bulk gas plant and the construction of a brand new CSA Facility west of the shipyard's existing CSA.

**City Of Hammond VA Clinic Site Development - Hammond, LA** - Project manager responsible for the design and construction for the site development of a VA medical clinic building in Hammond, Louisiana, including all site utilities, including water distribution, sewer collection, sewer lift station and force main, site electrical distribution, and exterior lighting, all paving, including all perimeter access roads, parking for the medical clinic, as well as construction administration services during the construction phase.

**Department of Health and Human Services Laboratory Site Redesign - New Orleans, LA** - Prepared plans for paving, roadways, and utilities for the site of a new Department of Health and Human Services Laboratory in New Orleans

**Dryades YMCA Natatorium & Wellness Center Development - New Orleans, LA** - Provided civil design for the Dryades YMCA Natatorium & Wellness Center.

**Jefferson Parish Court House Drainage - Jefferson Parish, LA** - Provided supervision to the plans, specifications, and roadway and railroad (Jack-and-bore) permits for installing the selected alternate improvement scenario for approximately 4,000 feet of new concrete arch pipe drain lines under an active roadway and crossing an active railway to relieve flooding in the newly-constructed Court House area in downtown Gretna. Utility relocations were required for the installation of the drain line.

**Jefferson Avenue Canal II: Dryades to Constance - New Orleans, LA** - Project Manager responsible for preparation of plans and specifications, construction administration, and resident inspection for improvement to the Jefferson Avenue Canal consisting of a new cast-in-place concrete box culvert, utility relocations and roadway reconstruction.

**Drainage Consultant for Council District 4 - Jefferson Parish, LA** - Project Manager for preparing drainage studies, analyses, and design improvements for various drainage projects for Jefferson Parish Council District No. 4.



# CHRISTOPHER N. LUNSFORD, AIA, NCARB

## Vice President - Architecture

### Education

Bachelor of Architecture,  
Mississippi State  
University 1998

### Registration

American Institute of  
Architects  
State of LA No. 7864

American Institute of  
Architects  
State of AL No. 6115

American Institute of  
Architects  
State of MS No. 4305

American Institute of  
Architects  
State of FL No. AR94875

### Memberships

American Institute of  
Architects

National Council of Archi-  
tectural Registration

Mr. Lunsford has 19 years of architectural design experience. He has participated in the design, preparation of construction documents and construction administration of various projects from programming through close out. His project experience includes industrial facilities, commercial and residential buildings, airports, fire stations, educational buildings, and recreational facilities. Mr. Lunsford will provide architectural specialties for BKL projects located in Louisiana, Mississippi, and Alabama.

### Experience Highlights

**Jackson County Adult Detention Center - Pascagoula, MS** - Architecture bidding and award support. Responsibilities also include coordination with Jackson County administration to review contracts and other contract related documents required of the bid process.

**CSA West Extension Engineering - Pascagoula, MS** - Provide architectural design to supply Ingalls with detailed packages for the relocation of an existing storage building, compressor station, and bulk gas plant and the construction of a brand new CSA Facility west of the shipyard's existing CSA.

**Jackson County Animal Shelter - Gautier, MS** - Provide architectural design for a +3,830 square foot facility located in Gautier, MS.

**Basic Skills Training Annex - Jackson County, MS** - Architectural design for the new addition to house multi-purpose functions and be capable of handling a large assembly or several small assemblies simultaneously.

**CSA West Extension Engineering - Pascagoula, MS** - Provide architectural design to supply Ingalls with detailed packages for the relocation of an existing storage building, compressor station, and bulk gas plant and the construction of a brand new CSA Facility west of the shipyard's existing CSA.

**West Panel Line Upgrades - Pascagoula, MS** - Coordinated with structural, mechanical and electrical depts. and oversees architectural design

### Previous Experience Highlights

**Jackson County Board of Supervisors, Mississippi Maritime Training Facility - Pascagoula, MS** - Project Manager (programming through construction) for a \$15.73 million facility to provide training for workers in shipbuilding. The project was funded by a Katrina Supplemental CDBG Grant administered by the Mississippi Development Association.

**Lake Charles Regional Airport Aircraft Rescue and Fire fighting (ARFF) Expansion - Lake Charles, LA** - Project Manager (schematic design through construction) for an addition-to-and-the-renovation-of the airport's existing ARFF. In addition to a new addition with exterior finishes to match the adjacent terminal building, the design for the existing metal building included new masonry veneer, doors, windows, lighting and other exterior details to match the terminal building. Responsibilities also included FAA grant support.

## NICHOLAS W. GRAY

*Project Manager*

### Education

Bachelor of Architecture  
Auburn University  
2006

### Registration

American Institute of  
Architects  
State of AL No. 30336521

### Memberships

American Institute of  
Architects

National Council of  
Architectural Registration  
No. 114098

Society of American  
Military Engineers, Mobile  
AL Post

Mr. Gray worked in the fields of construction and design-build contracting before joining BKL. His professional experience includes a variety of projects and building types including, but not limited to educational, civic, restaurant, hospitality, and industrial facilities for both publicly and privately funded projects.

### Experience Highlights

**CSA West Extension Engineering - Pascagoula, MS** - Provide architectural design to supply Ingalls with detailed packages for the relocation of an existing storage building, compressor station, and bulk gas plant and the construction of a brand new CSA Facility west of the shipyard's existing CSA.

**West Panel Line Upgrades - Pascagoula, MS** - Project architect for architectural work to upgrade the Panel Shop (#2106-001) production areas.

**Jackson County Animal Shelter - Gautier, MS** - Provide architectural design for a +3,830 square foot facility.

### Previous Experience Highlights

**Maritime and Metal Trades Training Facility - Jackson County, MS** - Conducted a program schedule including construction budget requirements, prepared schematic design drawings illustration the scale of the project components, and provided a preliminary construction cost estimate.

**Baggage Handling System Northwest Florida Regional Airport / Destin Ft. Walton Beach Airport - Eglin Air Force Base, FL** - Assistant Project Manager for Construction Administration providing architectural and construction administration management support for the installation of temporary facilities and two new baggage handling conveyors.

**Taxi Stand Addition Northwest Florida Regional Airport / Destin Ft. Walton Beach Airport - Eglin Air Force Base, FL** - Assistant Project Manager. Responsibilities include design and consultant coordination for the addition to the existing taxi stand at the airport. The addition includes a new storefront enclosure, unit heater, and new benches for the seating area.

**Homosassa Springs Boat House - Homosassa Springs, FL** - Designer providing research for the client on the best possible design type, as well as architectural support, code summary review, and construction details for a "pole barn" type facility that houses the maintenance shop for the county's patrol boats.

**Savannas Trace Preserve, State Park Education Center - Savannas Trace, FL** - Designer providing architectural support (plans and specs) and consultant coordination for the addition to an existing educational facility. Michael Baker provided plans and specs to successfully add a large educational room to an existing facility in the flood zones of Florida.

## MATTHEW C. ROGERS, PE

*Civil Engineer*

### Education

Bachelor of Science in  
Civil Engineering,  
University of Alabama,  
2005

### Registration

Professional Engineer  
State of AL No. 31245

Professional Engineer  
State of MS No. 21469

Professional Engineer,  
State of FL No. 82889

### Memberships

American Society of Civil  
Engineers

National Council  
of Examiners for  
Engineering and  
Surveying

Mr. Rogers is a Civil Engineer responsible for managing all production and design work for our offices in Mobile and Orange Beach, Alabama as well as in Ocean Springs, Mississippi. He has over twelve years of engineering experience including project management, civil design, cost estimating, and construction administration. Mr. Rogers is a Professional Engineer registered in the State of Alabama, the State of Florida, and the State of Mississippi. He holds a Bachelor of Science Degree in Civil Engineering from the University of Alabama and has studied Business Management at the University of South Alabama. He is a member of the American Society of Civil Engineers.

### Experience Highlights

**Jackson County Adult Detention Center - Pascagoula, MS** - Project Civil Engineer the new Adult Detention Center in Pascagoula, Mississippi. The facility accommodates 700-800 inmates in a total of 121,000 square feet. Civil/site design consisted of grading and drainage, utility services, security fencing, and environmental permitting. Project scope included design documents and bidding services as well as construction management, construction administration and resident inspection services throughout the construction..

### Previous Experience Highlights

**Additions and Renovations at Lott Middle School, Mobile County (Alabama) Public School System** - Project Civil Engineer for a building addition at Lott Middle School in Citronelle, Alabama. This project included demolition of the original school house, renovations to the existing cafeteria and classroom buildings, and construction of a new building which features additional classrooms and a gymnasium. Civil/site design consisted of grading and drainage for new driveways and parking lots, water and sewer improvements, a new irrigation well, and environmental permitting.

**East Biloxi Public Access and Living Shoreline Part B - Point Cadet Marina Pier Addition, City of Biloxi, Mississippi** - This project consists of replacing an existing pier at Point Cadet Marina behind the Golden Nugget Casino and adjacent to the Margaritaville Resort. The intent of this project was to replace an existing timber pier with a larger concrete pier to enable larger boats to access the area. The proposed pier will utilize precast concrete slabs with a concrete pile foundation. New timber piles will be installed adjacent to the concrete pier for the purposes of mooring as well as to act as a fender system. Additional improvements include new 3-pile timber dolphins and power pedestals.

**Laboratory of Infectious Diseases, the University of South Alabama** - Project Civil Engineer for a specialized laboratory facility for the University of South Alabama in Mobile, Alabama. Project scope included detailed site grading and drainage design as well as utility design. This facility is LEED certified and our design included LEED credits for site design and storm water detention design.

**Sediment Removal from Existing Back Bay of Biloxi Canals, City of Biloxi, Mississippi** - This project includes dredging material from seven sites located along the back bay of Biloxi, Mississippi. Scope of work included preparing construction plans and contract documents, bidding, and construction oversight. Additional services include permitting with the Mississippi Department of Marine Resources and other agencies and attending public meetings.



## HENRY M. PICARD, III, PE, PLS

*Vice President - Civil Engineer*

### Education

Bachelor of Science in  
Civil Engineering,  
University of New Orleans  
1981

### Registrations

Professional Engineer  
State of LA No. 22289

Professional Land Surveyor  
State of LA No. 4736

Professional Engineer  
State of AL No. 20937

Professional Engineer  
State of FL No. 56552

### Certifications

Local Public Agency  
(LPA) Qualification Core  
Training (LDOTD)

### Memberships

American Society of Civil  
Engineers

Society of American  
Military Engineers

Mr. Picard is a Vice President in the Civil Engineering Division. He is in charge of project management, hydraulics and traffic engineering, including schedules, staff, budgets, technical review and account management. He has 34 years of professional engineering experience. He has provided professional consulting focused on a wide range of projects, serving as Project Manager or Project Engineer on numerous roadway, transportation, rail, drainage and flood control, and hydraulic engineering. Mr. Picard holds a Bachelor of Science in Civil Engineering, and is Registered Professional Engineer in the States of Louisiana, Alabama, and Florida. He is also a Registered Professional Land Surveyor in Louisiana. He is also an active member of the American Society of Civil Engineers, and the Society of American Military Engineers.

### Experience Highlights

**Rivarde Detention Center & Juvenile Assessment Center - Harvey, LA** - Civil Engineer Design of a new office building to house 11 departments of 3 agencies serving juvenile justice, including the Juvenile Assessment Center.

**Jefferson Parish Correctional Center Expansion - Gretna, LA** - Civil Engineer for the expansion to the Jefferson Parish Correctional Center consisting of site and utilities for new 482 bed prison, a new booking/release facility, new sewer lift station and sewer force main.

**Coushatta Prison Site Development - DeQuincy, LA** - Developed construction documents, including plans and specifications, for paving, grading, drainage, and utility improvements for a private correctional facility owned by the Coushatta Tribe of Louisiana.

**Central Wastewater Treatment Plant Tunnel Pump Station - Baton Rouge, LA** - Preparation of a preliminary design report for design of a 72 MGD deep tunnel pump station, including the deep wet well with trash screens, four 16" and four 30" VTSH Sewage Pumps, and a 54" discharge force main system from the Tunnel PS to the Central WWTP, a distance of over 3 miles.

**Horseshoe Entertainment Riverboat Casino Terminal & Site Development - Bossier City, LA** - Designed bank stabilization, paving, grading, drainage, mooring and docking structures, traffic signal plans for two signalized intersections and utility improvements, including waterlines, gas lines, sewer lines, sewer lift station and force main for a riverboat casino terminal.

**Independence Stadium Construction Management - Shreveport, LA** - Provided supervision during the construction administration and construction management including the review of shop drawings, clarification of the drawings, eliminating schedule conflicts with multiple prime contractors, review of monthly pay estimates from multiple contractors, review of all change orders, tracking of project schedule, tracking of project budget, coordination with design architect, coordination of multiple prime contractors, full time resident inspection, and coordination of testing laboratory for the renovation of the Independence Bowl Stadium.

**MARK K. ROBERTS, PE**  
*Vice President - Civil Engineer*

**Education**

Master of Science in  
Engineering  
Management, University  
of New Orleans 2003

Bachelor of Science in  
Civil Engineering,  
University of New Orleans  
1994

**Registrations**

Professional Engineer  
State of LA No. 28568

**Memberships**

Society of American  
Military Engineers

American Society of Civil  
Engineers

Mr. Roberts is Vice President in Civil Engineering Division with over 20 years of experience in all phases of project development from conceptual design to construction management. He is in charge of project management and the civil engineering personnel, including schedules, staff, budgets, technical review, and account management. Since 1995, he has provided professional consulting services to numerous public and private clients throughout the Gulf Coast region and is a Registered Professional Engineer in Louisiana. Mr. Roberts' project management and design experience includes roadway improvements, drainage design, levee and floodwall design, canal improvements, site development, and construction management. Mr. Roberts holds a Bachelor of Science in Civil Engineering and an Master of Science in Engineering Management, both from the University of New Orleans. He is an active member of the Society of American Military Engineers, of which he currently serves on the Board of Directors.

**Experience Highlights**

**City Of Hammond VA Clinic Site Development - Hammond, LA** - Civil Engineer responsible for the design of site utilities, including water distribution, sewer collection, sewer lift station and force main.

**Gretna Courthouse Drainage Improvements - Gretna, LA** - Civil Engineer: plan and profile drawings, drainage design, and drawing coordination associated with the installation of selected alternate improvement scenario for approximately 4,000 feet of new concrete arch pipe drain lines under an active roadway and crossing an active railway to relieve flooding in the newly-constructed courthouse area in downtown Gretna.

**Flood & Gordon Street Improvements - New Orleans, LA** - Designed roadway improvements, hydraulic design and drainage modifications, utility relocations, cost estimates, line and grade analysis.

**Donaldsonville to the Gulf Flood Control Feasibility Study - Donaldsonville, LA** - Feasibility study for hurricane protection levees for Donaldsonville, LA, to Gulf of Mexico. Study area measures alignment alternatives against federal, environmental, and economic criteria.

**Cousins Pump Station Improvements - Harvey, LA** - Design of pump station frontal protection floodwalls, 2,000-cfs pump station expansion, and intake and discharge basin expansion at the Cousins Drainage Pump Station. Burk-Kleinpeter, Inc. was contracted by the West Jefferson Levee District to design improvements to the Cousins Drainage Pump Station Complex. The USACE took over responsibility for the Engineering during Construction Services during construction which BKL participated. BKL also provided engineering during construction support services to ensure that improvements were made according to the plans and specifications. The construction cost for both projects was approximately \$22.8 million.

## SURESH I. SHAH, PE, SECB

### Senior Vice President & Assistant Chief Engineer

#### Education

Master of Science in  
Structural Engineering,  
South Dakota School of  
Mines & Technology 1972

Bachelor of Science in  
Civil Engineering,  
University of Baroda,  
India 1970

#### Registrations

Professional Engineer  
State of LA No. 17937

Structural Engineer  
State of LA No. 1794-1105

Professional Engineer  
State of MS No. 13452

Professional Engineer  
State of FL No. 56432

Professional Engineer  
State of TX No. 83398

#### Memberships

American Society of Civil  
Engineers

American Concrete  
Institute

Mr. Shah is Senior Vice President and Assistant Chief Engineer. He holds a Bachelor of Science in Civil Engineering and an Master of Science in Structural Engineering and has 45 years of experience in the field. Mr. Shah has served as Project Manager on numerous projects, providing public and private clients with professional consulting on structural design, including highways, bridges, port and industrial structures and sewer and water treatment facilities. He is also an active member of the American Society of Civil Engineers and the American Concrete Institute.

#### Experience Highlights

**Jackson County Adult Detention Center - Pascagoula, MS** - In charge of structural design and coordination with other BKL design team for the new adult detention center

**CSA West Extension Engineering - Pascagoula, MS** - Project Manager for the relocation design package for the relocation of the existing bulk gas plant, compressor building and GFE storage building.

**Dryades YMCA Natatorium & Wellness Center Development - New Orleans, LA** - Provided project management for the design and construction administration of a new two-story structure adjacent to the existing Dryades YMCA building in New Orleans.

**New Addition to Gretna Police Headquarters - Gretna, LA** - Served as Project Manager for this project and oversaw the demolition of the existing building, and design and construction of a new three story office structure. He worked closely with the Owner to establish grant funding eligibility from FEMA and CDBG.

**Jefferson Parish Correctional Center Expansion - Gretna, LA** - Project Engineer for the design of an expansion to the existing Correctional Center consisting of adding 482 beds and a new booking/release facility.

**Soniat Canal Improvements - Sauve Road to Midway Ditch - Jefferson Parish, LA** - Prepared final plans to replace existing bridge with new widened bridge. Removed existing spans and bents in the canal and replaced them with single span using AASHTO Type IV girders.

**Marvin Braud Drainage Pump Station Expansion - Gonzales, LA** - Prepared plans and specifications for station improvements including a new metal station housing the new and existing pumps. Also, design of new concrete pump bays for two new 1,000cfs drainage pumps to expand capacity of the existing pump station.

**Jourdan Road Interchange & Overpass over the CSXRR - New Orleans, LA** - Project engineer for preliminary and final roadway and bridge plans and specifications for City of New Orleans. This project included drainage, geometrics, and prestressed concrete AASHTO girders on single column bents



**ERIC CHIN, PE**  
*Structural Engineer*

**Education**

Bachelor of Science in  
Civil Engineering,  
University of South  
Alabama 2000

**Registrations**

Professional Engineer  
State of LA No. 32839

Professional Engineer  
State of FL No. 65972

**Memberships**

American Society of Civil  
Engineers

National Council of  
Examiners for Engineering  
and Surveying

Mr. Chin joined us as a Structural Engineer in the New Orleans office. He earned a Bachelor of Science in Civil Engineering from the University of South Alabama. He is a registered PE in the State of Louisiana and the State of Florida. He has 16 years' experience in structural engineering. Mr. Chin is a member of the American Society of Civil Engineers and registered with the National Council of Examiners for Engineering and Surveying.

**Experience Highlights**

**Ingall Shipbuilding CSA West Warehouse Building – Pascagoula, MS** – Structural Engineer: design and review.

**Ingall Shipbuilding West Panel Line Building – 15MT Bridge Crane Warehouse Upgrade – Pascagoula, MS** – design and review.

**Shady Grove Mississippi River Dock Design – St. James Parish, LA** – Structural Engineer: Marine Facility Dock, Breasting Dolphin and Mooring Dolphin design.

**St. Charles Westbank Levees & Pump Stations – St. Charles Parish, LA** – Structural Engineer: T-Wall and Monolith Design for Parish of St. Charles per USACE Design Criteria.

**Previous Experience**

**Kinder Morgan, Inc. – Metairie, LA** - Provide Design Basis (Structural & Civil) to engineering consultants for Terminal projects, review engineering submittals such as report, drawings and calculations for approval. Review vendors and engineering consultant technical submittals, focus on Structural, Civil and Foundation details for engineering compliance. Also perform brief review Mechanical, Electrical and Instrumentation drawings for dualverifications.

**Waldemar S. Nelson & Company, Inc. – New Orleans, LA** - Perform 40MT Capacity Bridge Crane Design for underground operation. The 100ft long overhead bridge crane is approximate 60ft in height and span 40ft. Design is per CMAA, AISC DG7 and Engineering Journal design guidelines. Perform structural design of termination structures utilities for the Wolf Bay Underground Project which installs underground fiber optic cables (approximate 6000ft long) under Wolf Bay through Horizontal Directional Drilled method for PowerSouth Co. Structures are precast and design for flood / Marine type environment.

**Tetra Tech INCA – Metairie, LA** - Project Engineer: The IHNC-Lake Borgne Surge Barrier, the largest design-build civil works project in the history of the Corps. The concrete barrier wall stretches for 1.8 miles across the Mississippi River Gulf Outlet and the Golden Triangle Marsh. It also consists of a bypass barge gate and a flood control sector gate (each 150 feet wide) at the GIWW and a 56-foot-wide vertical lift gate at Bayou Bienvenue. The surge barrier has floodwall tie-ins to the New Orleans East risk reduction system on the north end and the St. Bernard risk reduction system on the south end. The entire structure is at an elevation of 25 and 26 feet above sea level.

# ALI Z. TAREH, MS, PE, SE

## Structural Engineer



### Education

Master of Science in  
Structural Engineering,  
University of California  
Berkeley  
2011

Bachelor of Science in  
Civil and Environmental  
Engineering,  
University of New Orleans  
2009

### Registrations

Professional Engineer  
State of LA No. 38856

Professional Engineer  
State of CA No. 80325

Licensed Structural  
Engineer  
State of LA No. 38856

Mr. Tareh joined us as a Structural Engineer. He earned a Master of Science in Structural Engineering from the University of California Berkeley and Bachelor of Science in Civil Engineering from the University of New Orleans. He is a registered PE in the State of Louisiana and the State of California. He has 7 years' experience in structural engineering. Mr. Tareh is a member of the American Society of Civil Engineers, the Structural Engineering Association of Northern California, and the American Institute of Steel Construction.

### Experience Highlights

**West Panel Line Upgrade** - Pascagoula, MS - Structural Project Manager: Structural design and analysis as well as coordinating engineering and drafting tasks with other staff members on the project.

### Previous Experience Highlights

**Coelacanth Jacket, 9-Well Drilling & Production Platform** - Ewing Bank Block 834, Gulf of Mexico - The Lead Engineer of Loadout: Performed loadout analysis of a 1,256 ft tall 30,000 tons jacket.

**Dominion Virginia Power, Virginia Offshore Wind Technology Advancement Project** - Multiple Counties, VA - The Lead Engineer of the Primary Steel: Designed and analyzed Inward Battered Guide Structure (IBGS) wind turbine foundation. Conducted coupled hydrodynamic and aero-elastic time-history load analysis.

**Maryland Offshore Wind Energy** - State of Maryland - The Project Lead Engineer: Designed and analyzed a 330 ft tall Met Mast Tower.

**Deepwater Wind Block Island Wind Farm - Block Island, RI** - Project Engineer: Evaluated the primary components of the jacket for vessel impact scenario.

**Moray Firth Offshore Renewable Limited - Moray Firth, UK** - Lead Engineer of the Primary Steel: Designed and analyzed IBGS wind turbine foundations for a proposed 500MW wind farm as part of zone 1 of round 3 of the UK wind project.

**Pacific Gas and Electric, Humboldt Bay Nuclear Power Plant - Eureka, CA** - The Lead Structural Engineer: Designed a steel structure for the new Reactor Pressure Vessel (RPV) Containment Facility. Designed foundation for the new Waste Management Structure. Designed RPV Shell Segments steel shipping boxes. Designed Valve Gallery Access Opening Closure Structure. Evaluated modifications to the existing structural components of the Plant's Unit 3 buildings. Evaluated the effect of removing the Turbine Building on the structural integrity of the Refueling Building. Evaluated the effect of activated concrete removal on the structural integrity of the RPV Caisson. Reviewed Kiewit, URS, Siempelkamp, and CB&I engineering packages and design documents.

**Diablo Canyon Power Plant - San Luis Obispo, CA** - The Engineer of Record: Seismic qualification of equipment skids. Performed dynamic analysis on two steel frame skids.

## ANTHONY C. MOSCHELLA, PE

*Vice President*

### Education

Master of Science  
in Environmental  
Engineering, University of  
New Orleans 1995

Bachelor of Science in  
Mechanical Engineering,  
Tulane University 1991

### Registrations

Professional Engineer  
State of LA No. 27965

Professional Engineer  
State of MS No. 18687

Professional Engineer  
State of AL No. 31501-E

### Memberships

American Public Works  
Association

Mr. Moschella is the Vice President of our Mechanical Engineering division. He has over 18 years of professional engineering experience and has provided professional consulting focused on a wide range of sewer, water and wastewater design projects. Mr. Moschella holds both a Masters degree in Environmental Engineering from the University of New Orleans and a Bachelor's degree in Mechanical Engineering from Tulane University. Prior to joining BKL, he served as the Principal Mechanical Engineer for the Sewerage and Water Board of New Orleans, supervising and providing design oversight to a team of mechanical, civil and electrical engineers and draftsmen for various water, sewer, and drainage projects throughout the city.

### Experience Highlights

**CSA West Extension Engineering - Pascagoula, MS** - Provided mechanical design for the replacement of a 370 ton cooling tower with associated circulation pumps and auxiliaries, 90,000 CFM in ventilation fans and corresponding intake louvers, and relocation of 3 10,000 gal liquified gas tanks with associated heat exchangers, piping, and auxiliaries.

**St. Bernard Raw Water Pump Station – Chalmette, LA** –Engineering oversight of design, permitting and construction management of a 12 MGD Raw Water Pump Station on the Mississippi River.

**Schneider Canal Pump Station Barscreen & Automatic Rakes – Slidell, LA** - Provided overall project supervision for screen cleaner upgrades and FEMA HMGP guidance recommendations.

**St. Bernard Water Purification Plant Upgrade – Chalmette, LA** - Provided overall project management, mechanical design oversight and mechanical quality control for upgrades to a 12 million gallon per day water purification plant.

**Arabi Water Line Extension - Janssen Street to Arabi Port Terminal – Arabi, LA** - Provided Design oversight of the development of plans and specifications for the construction of a new 12-inch PVC (C-900) water line along Janssen Street, thence along Eicke Canal, thence across ICRR property to an existing water line on the Arabi Port Terminal Site. The project also included the design of an encased railroad crossing, a canal crossing, and connection to the St. Bernard Parish water distribution system.

**Jefferson Avenue Canal II - Dryades to Constance – New Orleans, LA** - Provided design services for the installation of a new 8" and 12" water mains along Jefferson Avenue.

**Repairs of Gretna Precipitators 1 & 2 – Gretna, LA** - Performed all design, contract administration and inspection work for repairs and upgrades on two 2.5 mgd precipitators/upflow clarifiers.

**New Harahan Pumping Station (Pump to the River) Design Documentation Report – Harahan, LA** – Project Manager for the development of a Design Documentation Report for the proposed Harahan Pumping Station.



**DANIEL S. CALUDA, JR.**  
*Associate - Mechanical Designer*

**Education**

Bachelor of Science in  
Petroleum Engineering,  
Louisiana State University  
1981

Mr. Caluda is an Associate with major technical responsibility in the Mechanical Engineering Division. He has 31 years of experience and holds a B.S. in Petroleum Engineering from Louisiana State University in Baton Rouge. Mr. Caluda's professional experience includes drainage, water and sewer utilities, HVAC, plumbing, sprinklers and mechanical/industrial systems.

**Experience Highlights**

**Cousins Pump Station Improvements - Harvey, LA** - Design of a 2,000-cfs pump station expansion, including 2-12 foot diameter horizontal pumps, engines, air suppression, and all other necessary appurtenances.

**Central Wastewater Treatment Plant Tunnel Pump Station - Baton Rouge, LA** - Preparation of a preliminary design report for design of a 72 MGD deep tunnel pump station, including the deep wet well with trash screens, four 16" and four 30" VTSH Sewage Pumps, and a 54" discharge force main system from the Tunnel PS to the Central WWTP, a distance of over 3 miles.

**Horseshoe Entertainment Riverboat Casino Terminal & Site Development - Bossier City, LA** - Designed utility improvements including waterlines, gas lines, sewer lines, sewer lift station and force main for a riverboat casino terminal.

**Marvin Braud Drainage Pump Station Expansion - Gonzales, LA** - Mechanical Designer for pump station improvements and additions, which included a new station with 2,000-cubic feet per second (CFS) of pumping capacity. The new pumping station had a pile-supported intake basin and concrete discharge tubes, a steel-framed superstructure, and two 1,000 CFS pumps with diesel drives and gear reducers. BKL also designed reinforced concrete floodwalls along the banks of the station discharge channel downstream from the facility.

**Medical Center of Louisiana Underground Storage Tank In-Place Closure Specifications - New Orleans, LA** - Developed specifications for in-place closure of six underground storage tanks employed for emergency power generators.

**Louis Armstrong New Orleans International Airport - West Terminal Utilities - Kenner, LA** - Design of new fire protection system, emergency water supply well and primary power distribution system serving the New Orleans International Airport.

**Munster Wastewater Treatment Plant Expansion - St. Bernard Parish, LA** - Design and construction administration of treatment units to more than double the capacity of the existing wastewater treatment plant.

**80 Arpent Pump Station Expansion - St. Charles Parish, LA** - Designed a 150-cfs addition to Eighty Arpent Drainage Pumping Station on the west bank of St. Charles Parish, consisting of two 48" vertical pumps with natural gas-powered engines and right-angle gear units driving each pump.

# ROBERT D. BREDBERG, PE

*Senior Sanitary Engineer*

The logo consists of the letters 'BKL' in a white, bold, sans-serif font, centered within a red square. The square is divided into two horizontal sections by a thin white line.

## Education

Bachelor of Science  
in Civil Engineering,  
Mississippi State  
University 1983

## Registrations

Professional Engineer  
State of LA No. 30639

Professional Engineer  
State of MS No. 17462

Professional Engineer  
State of GA No. PE17473

Professional Engineer  
State of KY No. 19162

Professional Engineer  
State of OH No. 6075

Mr. Bredberg joined us as Senior Sanitary Engineer. He has more than 29 years of experience over a broad range of civil engineering and construction management projects. Mr. Bredberg has worked in the consulting engineering field for small, mid-size and large organizations in a variety of locations within the south and Midwest. He has executed projects for an assortment of clients including municipalities, sewer districts, private developers, and federal agencies on projects ranging from traditional design/bid/build to design/build. Mr. Bredberg has developed projects from conception through construction, and his experience is primarily in the design of water and wastewater projects for municipalities including treatment plants, pumping stations (both water and sewage), water distribution networks, water storage tanks and sewage collection systems.

## Experience Highlights

**Pascagoula/Moss Point WWTP Escatawpa WWTP - Jackson County, MS** - Project Manager - Client contact and design of mechanical improvements and civil engineering.

**St. Bernard Raw Water Pump Station - Chalmette, LA** - Engineering design, permitting and construction management of a 12 MGD Raw Water Pump Station on the Mississippi River.

**Schneider Canal Pump Station Barscreen & Automatic Rakes - Slidell, LA** - Design of mechanical and civil elements of the project and project management.

**St. Bernard Water Purification Plant Upgrade - Chalmette, LA** - Responsible for performing engineering calculations, mechanical design, product and material selection, working document production, and construction management for design construction of a 12 million gallon per day water purification plant.

**Sewer System Improvements - Violet, LA** - Project Manager for a new pump station and 5000' of various force mains with the purpose of eliminating gravity sewer system overflows occurring in the Violet area.

**East Bayou Road Waterline Engineering Design - Plaquemines Parish, LA** - Project Engineer, provided the design of mechanical and civil elements and project management for the extension design of approximately 1,000 linear feet of a 12" waterline.

**Lions Water Treatment Plant Pump Station - St. John the Baptist Parish, LA** - Mechanical and civil design to increase the pumping capacity from the Old Lions Raw Water Intake pump station at the Lions WTP.

**Hero Drainage Pump Station Pumps 4 & 5 Physical Modeling - Harvey, LA** - Coordinated subcontractors and maintain schedule throughout the drainage pump modeling process.

# LEWIS J. BERNARD, PE

*Mechanical Engineer*

**BKL**

## **Education**

Bachelor of Science in  
Mechanical Engineering,  
Tulane University 2006

## **Registrations**

Professional Engineer  
State of LA No. 36278

Mr. Bernard obtained his Bachelor of Science in Mechanical Engineering. He has been with us for the past eight years in the Mechanical Division, where he has knowledge and experience working on pumping stations; drainage, water and sewer utilities; and mechanical/industrial systems. He is a Registered Professional Engineer in the State of Louisiana.

## **Experience Highlights**

**Marvin Braud Drainage Pump Station - Gonzales, LA** - Responsible for the preliminary and final plans for 2 new pumps, 1,000 CFS each with formed suction intakes, right angle gears, mechanical screen cleaners and diesel drives and they will include 2 new 1,000 CFS gravity flow bays for drainage during periods of low tide levels in the outfall canal.

**Willowridge Drainage Pump Station – St Charles Parish.** Lead mechanical engineer for design of a new 300 CFS drainage pump station including bar screens, pump station structure, three 100 CFS vertical pumps with electric motors, backup generator and discharge pipes located in the Willowridge Subdivision on the west bank of St. Charles Parish.

**St. Bernard Water Purification Plant Upgrade – Chalmette, LA** – Responsible for performing engineering calculations and mechanical design, product and material selection, and working document production for upgrades to a 12 million gallon per day water purification plant.

**Buras Fire Station – Buras, LA** – Designed mechanical, HVAC, plumbing fire protection and sprinkler specifications for the rebuilding of the Buras Fire Station.

**St. Bernard Raw Water Pump Station, Chalmette, LA:** Engineering design, permitting and construction management of a 12 MGD Raw Water Pump Station on the Mississippi River.

**Scarsdale Drainage Pump Station, Plaquemines Parish** – Design for replacement of diesel engines, right angle gears and supporting equipment for four horizontal pumps including new keel coolers.

**Plaquemines Drainage Pumping Station - Belle Chasse No. 1 – Belle Chasse, LA** - Improvements to the Plaquemines Drainage Pumping Station, Belle Chasse No 1, which includes two new drive units to compensate for increased pumping pressure requirements.

**USACE New Orleans District - East of Harvey Canal Floodwalls - Contract No. 3\*** – Plaquemines Parish, LA - Plans for the Fundamental Design Memorandum for the USACE improvements including raising floodwall and lengthening discharge tubes.

**Sewer Lift Station Vintage Drive at Medoc Street - Kenner, LA** - Design, plans, specifications, cost estimates for rehabilitation of a sewer pump station.

**Baton Rouge Central Consolidated Lift Stations – Baton Rouge, LA** – Design, plans and specifications for HVAC systems in electrical rooms at sewerage pump stations.



**PERRY P. HOGAN, PE**  
*Vice President*

**Education**

Bachelor of Science in  
Electrical Engineering,  
Tulane University 1997

**Registrations**

Professional Engineer  
State of LA No. 31042

Professional Engineer  
State of MS No. 17195

Professional Engineer  
State of AL No. 30757

Professional Engineer  
State of FL No. 70426

Mr. Hogan is Vice President of the Electrical Engineering division. He has 20 years of electrical engineering experience, and has provided professional consulting focused on a wide range of projects. He has served as Lead Electrical Engineer on numerous highway, roadway, industrial, commercial and recreational design projects. Mr. Hogan holds a Bachelor of Science in Electrical Engineering from Tulane University, and is Registered Professional Engineer in the States of Louisiana, Mississippi, Alabama, and Florida. He is also a member of the Institute of Electrical and Electronics Engineers and the National Fire Protection Association. Additionally, Mr. Hogan is approved by National Council of Examiners for Engineering and Surveying and holds a Transportation Worker Identification Credential card.

**Experience Highlights**

**Jackson County Adult Detention Center - Pascagoula, MS** - Responsible for electrical design documents for the new adult detention center.

**CSA West Extension Engineering - Pascagoula, MS** - Coordination with structural and mechanical depts., and oversees electrical design for the relocation design package for the relocation of the existing bulk gas plant, compressor building and GFE storage building.

**NGSB Unit Substation Vault - Gulfport, MS** - Responsible for the electrical design and specifications of (4) unit substation and elevated vaults. This project consisted of (2) 2000kva and (2) 3750kva unit substation transformers. The unit substations were complete with custom 13.8kv primary air switches, 13.8kv/480v unit substation transformers and walk-in low voltage distribution switchgear draw-out circuit breakers.

**City Of Hammond VA Clinic Site Development - Hammond, LA** - Project electrical engineer responsible for the main electrical service, site parking lights, and telecommunications service design to support the installation of a modular medical building.

**New Addition to Gretna Police Headquarters - Gretna, LA** - Electrical Engineer, provided electrical design for the existing electrical equipment, flood mitigation, electrical service demolition, new power distribution system, backup generator distribution system, indoor/outdoor lighting, lighting protection and grounding.

**Jackson County Animal Shelter - Gautier, MS** - electrical engineering - for a +3,830 square foot facility located in Gautier, MS.

**Ponchatoula Sewer Lift Station Generators - Ponchatoula, LA** - Responsible for client meetings and contractual project compliance.

**Belle Chasse Hwy, LA 23 Street Lighting - Whitney Ave to Lapalco Blvd - Gretna, LA** - Design of replacement streetlights to Belle Chasse Highway, LA 23 between Whitney Ave and Lapalco Blvd in Gretna, LA.

# J. BART MULLIS, III, PE, LEED AP

## Associate - Electrical Engineer

The logo consists of the letters 'BKL' in a white, bold, sans-serif font, centered within a red square. The square is positioned in the upper right corner of the page, partially overlapping a light beige background.

### Education

Associate of Science in  
Electrical Engineering,  
Delgado Community  
College 1974

### Registrations

Professional Engineer  
State of MS No. 10933

Mr. Mullis, joined us in 2008 and has over 25 years of experience in engineering management, project management, engineering, design, servicing, and construction projects including commercial, institutional, industrial and power generation with six years in nuclear power generation. Positions ranged from technician to field engineering and design engineering, preparation of specifications and procedures, with additional experience in construction supervision. Mr. Mullis also has experience with computer-aided design and engineering tasks such as load calculation, systems analysis, spread sheets, word processors, and CAD systems. He has experience working on a broad range of project types and sizes including primary distribution, secondary distribution, medium voltage systems, communications, security systems, data, and fire detection and alarm systems. Mr. Mullis also has experience with coordination and supervision of electrical, mechanical, plumbing, civil, fire protection design, and contractors.

### Experience Highlights

**Jackson County Adult Detention Center - Pascagoula, MS - Electrical engineer for the new adult detention center**

**New Addition to Gretna Police Headquarters - Gretna, LA -** Provided electrical design for the existing electrical equipment, flood mitigation, electrical service demolition, new power distribution system, backup generator distribution system, indoor/outdoor lighting, lighting protection and grounding.

**Pascagoula/Moss Point WWTP Escatawpa WWTP - Jackson County, MS -** Electrical design for the water treatment and wastewater treatment plants that serve several communities in Jackson County.

**Jackson County Animal Shelter - Gautier, MS -** Electrical engineering - for a +3,830 square foot facility located in Gautier, MS.

**New Taft Park Drainage Pumping Station – Jefferson Parish, LA -** Lead project electrical engineer for drainage pump station, including distribution, controls and standby generator.

**Schneider Canal Drainage Pump Station Barscreen & Automatic Rakes – Slidell, LA -** Design of electrical project elements.

**18th Street Lighting Design – Metairie, LA -** Prepared construction plans, specifications and cost estimates for replacement street lights to 18th Street between Division Street and North Arnoult Street utilizing decorative poles and fixtures.

**Ponchatoula Sewer Lift Station Generators – Ponchatoula, LA -** Project electrical engineer responsible for project coordination, field site visits, and detailed electrical design.

**Gretna Wastewater Treatment Plant New Generator – Gretna, LA –** Lead Project Electrical Engineer and project coordinator for 800 kw standby generator and underground fuel storage tank.



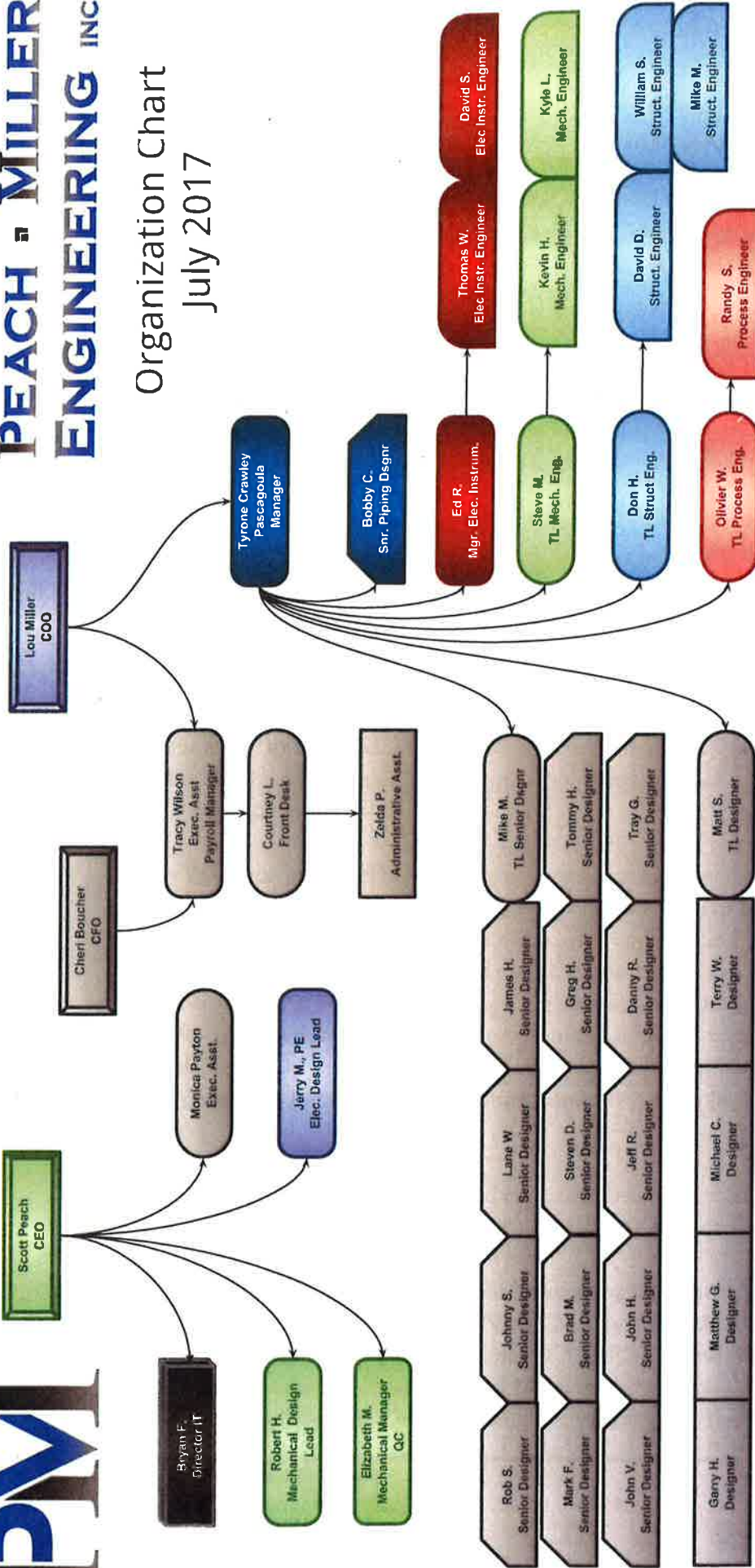
## PEACH ENGINEERING







Organization Chart  
July 2017



General

IT  
(Information Technology)

Mechanical

Electrical

Structural

Piping

Instrumentation

Process

**SCOTT PEACH, P.E.****MECHANICAL ENGINEER**

EDUCATION	University of South Alabama, Mobile, AL <i>BS, Mechanical Engineering, Tau Beta Pi, Pi Tau Sigma</i>	1997-2000 <i>May 2000</i>
	Tate High School, Pensacola, FL <i>High School Diploma, 4<sup>th</sup> in class of 440</i>	1991-1992 <i>May 1992</i>

REGISTRATIONS	State of Alabama #26664	State of Mississippi #19412
	State of Arkansas #14480	State of Florida #60835
	State of Louisiana #34871	State of Texas #103006
	State of South Carolina #33336	State of Tennessee #117809
	State of Georgia #40833	

EMPLOYMENT SUMMARY Mr. Peach worked his way through school, first as a helper for the contractor Professional Mechanical, then as a mechanical designer for CDC Engineers, and then as freelance mechanical designer at Peach & Associates until he made partner with Lewis Engineering in 2004. Since 2009 Mr. Peach has served as Fire Protection Engineering for S&S Sprinkler LLC, and from 2010 to 2017, Scott lead SP Engineer as President. In June 2017 Scott partnered with Lou Miller and renamed SPE to Peach Miller Engineering, Inc., where Mr. Peach serves as CEO. PME is a full service 45man engineering firm, based in Mobile, AL and Pascagoula, MS serving the industrial sector.

EXPERIENCE SUMMARY Scott Peach has over twenty-two years of experience in the construction and engineering of mechanical systems and over seventeen years of fire protection engineering. His experience as both a mechanical engineer and fire protection engineer includes refineries, chemical plants, power plants, and campus central plants at hospitals, municipal buildings, higher education, and other institutions. Mr. Peach has experience with and understands the high demands of precision manufacturing, something challenged further by our coastal humid climate with the requirement for absolute temperature humidity control for large manufacturing spaces.

Mr. Peach also serves as a credentialed expert witness in mechanical engineering for cases dealing with fire protection, plumbing, and HVAC systems.

COMMUNITY Mr. Peach is a strong proponent of professional organizational involvement. He is currently serving as the RP Regional Vice Chair for ASHRAE Region VII. He has served as President of the Mobile chapter of ASHRAE for two terms and has served as Treasurer for the ASHRAE Regional Conference in Mobile. Mr. Peach was awarded the Mobile Area Council of Engineers Prestigious Young Engineer of the

**SCOTT PEACH, P.E.**

**MECHANICAL ENGINEER**

Year in 2010. He has previously been awarded Engineer of the Year from Mobile ASHRAE Chapter and the Chapter Service Award from the ASHRAE Society. Mr. Peach was also recognized as one of Mobile's outstanding "40 under 40" in Mobile Bay monthly.

AFFILIATIONS American Society of Heating, Ref. and Air-conditioning Engineers (ASHRAE)  
Region VII Regional Vice Chair, Research Promotion 2016 - Current  
Mobile Chapter President 2002 – 2003, 2014-2015  
Mobile Area Chamber of Commerce  
National Fire Protection Association (NFPA)  
American Society of Mechanical Engineers (ASME)  
Society of Fire Protection Engineers (SFPE)  
Central Gulf Coast Chapter Board and Charter Member

Mr. Peach is the father of four and enjoys working with a number of local charities. He has been rewarded for many years as a head coach for primary grades in basketball, baseball, and soccer at the Christ United Methodist Church. He is a member of Men of St. Joseph, a Catholic men's group dedicated to strengthening fatherhood, the Sunset Rotary Club, and Kiwanis International, formerly serving as the Vice-President of the Azalea City Kiwanis. Mr. Peach is also a third degree Knight of Columbus and a Eucharistic Minister at Corpus Christi Catholic Church in Mobile. Lastly, Mr. Peach and his wife of 20 years are team leaders and past local coordinators of the Mobile Archdiocese for Engaged Encounter, an international organization dedicated to the strengthening of marriages through ministry to engaged couples on weekend retreats.





**SCOTT PEACH, P.E.****MECHANICAL ENGINEER**

The following pages are an abbreviated list of the projects Mr. Peach has engineered or sites at which he has managed multiple projects.

Project	Location
Abernethy Federal Courthouse	Aberdeen MS
Airbus Delivery Building	Mobile, AL
Airbus Hazardous Storage Facility	Mobile, AL
Airbus Powerhouse	Mobile, AL
Akzo Nobel Chemical Plant	Axis, AL
Alabama Power Barry Steam Plant	Bucks, AL
Alice Bakery Distribution Center	Alice, TX
American Autism	Daphne, AL
ASMS Auditorium Renovation	Mobile, AL
Augusta Evans Middle School	Mobile, AL
Bank of the Ozarks	Mobile, AL
Beau View Condominiums	Biloxi, MS
Bishop State Community College	Mobile, AL
Canton Elementary School	Jackson, MS
Caribe Resort Condominiums	Orange Beach AL
Carmelite Monastery	Mobile, AL
Chemical Storage Warehouse	Mobile, AL
Chevron Refinery	Pascagoula, MS
Chickasaw Fire Station	Chickasaw, AL
Christ Community Church	Mobile, AL
City of Mobile Public Safety Complex Fire Station & Police Department	Mobile, AL
CityHope Church	Daphne, AL
CityHope Church	Foley, AL
Coca Cola Bottling Consolidated Company	Mobile, AL
Cotton Hall Terrace	Mobile, AL
Crossfit	Daphne, AL
Cypress Gardens Residence (25,000 sf private home)	McLeod, TX
Daphne Civic Center	Daphne, AL
Daphne Fire Station #3	Daphne, AL
Daphne Public Library	Daphne, AL
Daphne Utilities Offices	Daphne, AL
Dauphin Way Assisted Living	Mobile, AL
Day Trading Institute	Mobile, AL
Dayspring Baptist Church	Mobile, AL
Downtowner Executive Plaza	Mobile, AL
Drax	Baton Rouge, LA

**SCOTT PEACH, P.E.****MECHANICAL ENGINEER**

---

DuPont	Axis, AL
DuPont	DeLisle, MS
Evonik Degussa	Theodore, AL
Evonik Mepron	Theodore, AL
Faulkner State Community College Allied Health Sciences Building (LEED-Silver)	Fairhope, AL
Franklin Primary West	Mobile, AL
Fish & Wildlife	Fairhope, AL
Fort Whiting Armory	Mobile, AL
Frigo Orthodontics	Gulfport, MS
Garden Park Hospital	Moss Point, MS
Georgia Pacific	Pennington, AL
Georgia Pacific	Brewton, AL
German Pellet	Port Arthur, TX
Gulf Shores Sportplex	Gulf Shores, AL
Holiday Inn	Mobile, AL
Homeland Security Office	Mobile, AL
Indian Springs Elementary School	Mobile, AL
Indigo Hotel	Orange Beach, AL
Indigo Condominiums	Perdido Key, FL
Ingalls CSA III	Pascagoula, MS
Integrity Music	Mobile, AL
La Riva Condominiums	Perdido Key, FL
Lighthouse	Daphne, AL
Loxley Medical Center	Loxley, AL
Lyceum Gateway	Seaside, FL
M&M Bank	Fairhope, AL
M&M Warehouse	Mobile, AL
McCullough Institute	Gulf Shores, AL
McNeal Elementary School	Jackson, MS
Melting Pot	Mobile, AL
Mississippi Export Railroad	Helena, MS
Mobile Airport Central Plant	Mobile, AL
Mobile Area Water and Sewer System	Mobile, AL
Mobile County Clinic (SW Mobile)	Mobile, AL
Mobile County-City Government Plaza	Mobile, AL
Moorings Condominiums	Orange Beach, AL
National Bank Commerce	Fairhope, AL
National Bank Commerce	Orange Beach, AL
NAVFAC Albany	Albany, GA

**SCOTT PEACH, P.E.****MECHANICAL ENGINEER**

NOAA Labs	Pascagoula, MS
Pascagoula Planning Department	Pascagoula, MS
Pelletaire Fire Suppression	Mobile, AL
Phoenix West Condominiums	Orange, AL
Pi Beta Phi Sorority House, Univ. Alabama	Tuscaloosa, AL
Pilot Office Building	Richardson, TX
Providence Hospital	Mobile, AL
Quinlan Hall - Springhill College	Mobile, AL
Red Cross Regional Headquarters	Mobile, AL
Redstone Arsenal	Huntsville, AL
Regions Bank	Mobile, AL
Riverview Plaza Hotel	Mobile, AL
Rock-Tenn Paperboard Plant	Demopolis, AL
Sabic Innovative Plastic Manufacturing	Bay St. Louis, MS
Scarborough Middle School	Mobile, AL
Southern Light Tier III Datacenter	Mobile, AL
Sportsworld Condominiums	Gulf Shores, AL
SSAB Steel Plant	Axis, AL
Starlight Dance Studio	Mobile, AL
State of Alabama Governor's Mansion (at beach)	Ft. Morgan, AL
Surgicare Endoscope	Mobile, AL
Thomas Hospital	Fairhope, AL
ThyssenKrupp Computer Data Center	Calvert, AL
ThyssenKrupp Stainless Steel Plant	Calvert, AL
Timber Creek Community Center	Daphne, AL
Timber Creek Office Building	Daphne, AL
TMC Electric Motors	Mobile, AL
Trane Retail and Service Sales	Mobile, AL
Turquoise Place	Orange Beach, AL
UMS Preparatory School	Mobile, AL
University of South Alabama Housing PH III	Mobile, AL
USA Medical Center	Mobile, AL
USA Tech & Research Park	Mobile, AL
Vulcan Plant	Foley, AL
Walter Anderson Museum	Ocean Springs, MS
Waterfront Rescue Mission	Mobile, AL
Wind Creek Casino	Atmore, AL
Wolseley Industrial	Theodore, AL
Zachary Construction	Moss Point, MS





## ACCURATE CONTROLS



## **ACCURATE CONTROLS INC. KEY INDIVIDUALS**

### **MANAGEMENT:**

**Thomas R. Rogers - CEO:** Tom started Rogers Electric, Inc. and then later founded Accurate Controls, Inc. He has over 45 years of business experience and his entrepreneurial spirit has contributed greatly to the success of ACI. He is responsible for the overall leadership and management of the company.

**TJ Rogers - President/Lead Project Coordinator:** TJ graduated from Butler University with a Business and Economics Degree. He started as an electrician's helper at 15 years old and advanced to journeyman electrician. After 20 years at Accurate Controls, TJ is responsible for the following: operations, business development, engineering, and project coordination. He has extensive experience with technical system design, software development, custom system assembly, and system installation. In addition, he has years of project management and system maintenance experience. TJ has helped grow the company into a leader in the security automation business.

**Duwayne Verch Jr. - Vice President, Operations:** Duwayne graduated from UW-Madison with a Bachelor's Degree in Electrical Engineering. He has been with the company for over 20 years. His experience includes operations management, programming, and engineering. Duwayne has strong technical skills and industry knowledge.

**Jason Loewe - Operations Director:** Jason graduated from Ripon College with a Bachelor's Degree in Economics and has been with the company for 11 years. Jason's prior experience in the financial industry as a Credit Analyst and Vice President of Commercial Lending has been an asset in his responsibilities as estimator and lead project coordinator at Accurate Controls, Inc.

### **PROJECT MANAGEMENT TEAM:**

**Fred Voetberg - Project Manager:** Fred has 9 years of experience with Accurate Controls Inc. and possesses a strong manufacturing background. Fred joined our team with 20 years of experience as a project manager with the David White Corporation.

**William Olm - Senior Project Manager:** William graduated from Ripon College with a Bachelor's Degree in Business Administration / Economics in May 2008. William started his career as an intern in May 2007 and became a full-time employee in May 2008.

**Rick Berken - Project Manager:** Rick graduated from Michigan Tech with a Bachelor's Degree in Civil Engineering. Rick joined the ACI staff in November of 2010. Rick spent the previous five years in project management work for a large construction company out of Brownsville, WI.

**Tyler Henslin - Project Manager:** Tyler graduated from UW-Whitewater with a Bachelor's Degree in Business Administration. He started with ACI as an Assistant Project Manager and was promoted in December 2010 to Project Manager.

**Anthony Sadlon - Project Manager:** Anthony joined the Accurate Controls team in August of 2011. His previous experience has been an asset both to our production and engineering teams. Anthony has worked in our manufacturing shop, engineering and service departments and has now taken on a Project Management role.

**Marcus Walters - Project Manager:** Marcus started with ACI as an intern working as an assistant in the Project Management Department. He transitioned to a full time employee in 2013, and is currently a Project Manager.

**Katie Jo McGee - Project Manager:** Katie Jo graduated from Ripon College in May 2015 with a Degree in Business Management. She joined the company after graduation and has the opportunity to learn our business through an extensive on-site project management role.

**Brad Brooks - Asst. Project Manager:** After studying business at Ripon College, Brad joined Accurate Controls in the Spring of 2016 as an Assistant Project Manager.

### **CUSTOMER SERVICE:**

**Jeromy Dahlke - Customer Service Manager:** Jeromy has over seven years with Accurate Controls as a Field Technician and was promoted into the role of Project Technician approximately two years ago. He is factory trained with all of our core vendors with emphasis in Modicon, Symax, Dukane, Harding, Jeron, Pelco, Bosch, Vicon, Northern Computers, Galaxy, Keri and Notifier installation and programming techniques.

**Lynn Priebe - Service Manager:** Lynn brings over 20 years of customer service and sales experience to Accurate Controls. She currently schedules our field technicians to meet customer needs and deadlines. In addition, she is responsible for growing our service revenue through multi-year contracts and direct to facility sales volume.

**Lori Endeward - Service Coordinator:** Lori joined the ACI team in December of 2013. She has many years of office management experience, as well as having owned and operated her own businesses.



**Dan Peotter - Service Technician:** Dan joined the Accurate Team in September of 2002. He has over 10 years of experience in the Audio/Security Industry. He is experienced with all Accurate Control Inc. vendor products and is factory trained in their features, benefits, installation, and service.

**Ben Wiles- In-House Service Technician:** Ben joined the Accurate team in December 2010. He earned an Associate's Degree in Electro-Mechanical Technology. In his current role, Ben installs and troubleshoots systems.

### **FIELD SERVICES:**

**Pete Kuhn - Field Services Manager:** Pete has over 15 years of experience with Accurate Controls Inc. He is factory trained with all of our vendors with emphasis in Modicon, Symax, Dukane, Harding, Pelco, Vicon, Northern Computers, Galaxy, Keri and Notifier installation and programming techniques. Pete is responsible for field project management with an emphasis on highly technical retrofit projects

**Warner Woods -** Warner joined the Accurate team in September 2010. Warner brings 6 years prior experience in the digital communications industry and 20 years of electrical/communications experience in the military. Warner also holds a Bachelor's degree in Electronic Management.

**Mike DeMotts -** Mike was hired in May 2010 and has over 15 years of electrical experience.

**Akiba Galloway -** Akiba is a qualified electrician with over 13 years of valuable experience. His experience includes residential and commercial installations. He has proven leadership skills and a track record of meeting tight deadlines.

**Chuck Wachs -** Chuck has over 20 years of industry experience in low voltage system installations, troubleshooting, and maintenance. He has supervisory experience leading a team of technicians and also served as a corporate training manager.

**Doug Pye -** Doug has over 25 years of industry experience. He has extensive experience in all aspects of electrical construction with specialized knowledge of electronic security systems.

**Michael Connell -** Michael started with ACI in February of 2014 and is a highly skilled electronics technician with an Associate Degree in Network Engineering and several years of experience as a technician in the Navy.

**Matthew Connell –** Matthew started with ACI as a Field Technician in November of 2015. He holds an Associate Degree from Southwest Florida College. He has over 12 years of electrical experience.

**Danielle McKeefrey** – Danielle joined Accurate Controls in early 2015 as a Field Technician. She is teamed with a Lead Field Technician and consistently demonstrates a strong desire to learn and master new skills.

**James Garcia** – James earned an Associate Degree in Applied Science in Electro-Mechanical Technology from Lakeshore Technical College. He joined Accurate Controls as a Field Technician in the Fall 2015.

**Jhered Hamby** – Jhered studied at the University of Wisconsin-Fox Valley and earned an Associate Degree in Electro-Mechanical Technology from Fox Valley Technical College. He holds multiple certificates and has over six years of work experience in our industry. He joined Accurate Controls as a Field Technician.

**Ty Hansen:** Prior to joining ACI, Ty had several years of experience working for Murdoch Electric directly with our technicians on correctional projects. He was hired as a Field Technician in May 2014.

#### **ENGINEERING TEAM:**

**Rodney Kern - Engineering Team Manager:** Rodney graduated from ITT Milwaukee with a Degree in Applied Science/Electrical Engineering. Rodney is a Microsoft certified professional. He has been with Accurate Controls for 10 years and has extensive experience in engineering and project management.

**DJ Adamski - Project Engineer:** DJ is a graduate of ITT Technical Institute and has prior experience in the electronics industry.

**Logan Trost - Engineering Technician:** Logan joined ACI in May of 2014. Logan is in the process of completing his computer science degree and will be working in the field and engineering departments until he completes his degree.

**Mark Zeatlow - Engineering Technician:** Mark had over 15 years prior electro-mechanical designer experience before joining our AutoCAD department.

**Danyal Khosravi - Engineering Technician:** Danyal is a 2013 graduate of Fox Valley Technical with an Associate Degree in Electronics Engineering Technology. Danyal has been with Accurate since September of 2013.

#### **PROGRAMMING TEAM:**

**Steve Mancl - Software Development Manager:** Steve graduated from UW-Stevens Point with a B.S. in Computer Information Systems. Steve worked as an intern at Accurate Controls in assembly, field start-up, and troubleshooting. Prior to his current

role, he gained valuable experience working in our engineering and programming departments.

**Jim Goyette - I.T. Manager:** Jim joined the Accurate Team in the fall of 2010. Jim brings over 25 years of Information Technology experience and currently leads our I.T. Department.

**Gene Krejcarek - Application/Software Engineer:** Gene graduated from Ripon College with a Bachelor's Degree in Computer Science. In March of 2005 Gene joined our team in the development of graphic layouts as well as the implementation of software.

**Brian Jackowski - Programmer:** Brian holds a Bachelor Degree of Science from UW-Oshkosh. He has over eleven years of experience as a programmer in the security industry.

**Michelle Dorsch - Programmer and Certification & Training Coordinator:** Michelle has been with ACI since July of 2006. Up until late 2013 Michelle spent her time on the road as a field technician gaining valuable experience.

**Guanshan Fix -**

#### **MANUFACTURING STAFF:**

**Steve Rivera - Testing Coordinator:** Steve has extensive experience in the construction and industry. He leads our testing/quality team to ensure zero defects of the components we build.

**Roger Liptow - Production Coordinator:** Roger has over fifteen years of experience in the electronics industry. His primary responsibilities are overseeing production in the shop. He also handles some panel assembly, specializing in audio systems.

**Diane Christensen - Production Technician:** Diane has been with the company for over 2 years and has brought a wealth of knowledge from working in other industries.

**Don Dorsch - Production Technician:** Don has many years of experience in technical production application and is well versed in design drafting and process control.

**Dorena Wielgosh - Production Technician:** Dorena worked through our system education program and has been a solid addition to our production team.

**Brendan Conlon - Production Technician:** Brandon has a technical degree in applied sciences and extensive experience in low voltage electrical systems. He has also worked through our system education program.

**John Specht - Production Technician:** John has worked through our system education program and has been a solid addition to our production team.



**ADMINISTRATIVE STAFF:**

**Dave Neper - Human Resources Manager:** Dave graduated with a B.S. Marketing, Butler University - Indianapolis, IN and earned an Executive MBA from the Olin School of Business at Washington University, St. Louis, MO. In his current role, Dave is responsible for the human resource activities of the organization.

**Angie Beuthin - CPA:** Angie joined ACI in September of 2010 out of an investment firm in Milwaukee, where she spent the previous 3 years as a Tax Specialist/Controller. She holds a B.S. in Accounting from Carroll College. In addition, she earned and currently holds a CPA license in the State of Wisconsin. Angie is responsible for all accounting activity at ACI including: accounts payable, accounts receivable, and financial reporting.

**Brie Amend - Account Payable/Receivable Clerk:** Brie has many years of accounting experience and is in charge of many aspects in our accounting area.

**Angela Shultz - Office Assistant:** Angela joined the Accurate Team in April 2011. She comes to us with years of prior experience owning/operating her own business in Green Lake, WI

**Alicia Kelma - Project Assistant:** Alicia joined the Accurate Team in January of 2009. She brings with her over 12 years of experience in an office environment.

**Jami Estes - Ship/Rec.:** Jami started with ACI in April of 2009. She is responsible for ordering all our equipment as well as handling all incoming/outgoing shipments.

## Business Experience



326 Blackburn St.  
Ripon, WI 54971  
920.748.6603  
fax 920.748.9397

Accurate Controls, Inc. focuses on security automation systems for the corrections industry and related markets. It has been part of a 34-year commitment in providing innovative, highly reliable designs and installations.

Accurate Controls, Inc. grew from an industrial based electrical contracting company known as Rogers Electric, which was established in 1975. Rogers Electric, Inc. is a licensed electrical installation group that focuses mainly on major industrials. With these clients and the evolution of the industrial controls, the Programmable Logic Controller became Rogers Electric's backbone for client support.

Accurate Controls was first conceived when Leviton (a major manufacturer of electrical devices) asked Thomas Rogers; our CEO, to become an engineering consultant for their newest control product line. This occurred in 1982 and Accurate Controls, Inc. flourished from Leviton to the implementation of non-proprietary control systems especially suited for the corrections market.

The security automation systems we specify, engineer, sell and install are controls systems utilizing only third party available components such as sound, CCTV, video visitation, perimeter detection, nurse call, access control, wireless mobile operator stations, inmate databases and facility diagnostic systems. We boast a list of distributors, of which all of our employees are factory trained and authorized.

Video graphic user interface systems (touchscreens) are the standard in today's systems. Accurate Controls has been developing these types of systems for more than 20 years utilizing the standard software in the corrections industry. All of our software engineers have been thoroughly trained in programming and VGUI development.

Our strategies are to bring individual companies together, consolidate information and experience to accomplish goals as a team. We are dedicated to insuring continued satisfaction and growth in the security automation industry. We invite you to research our commitment to professional engineering, installations and quality.