



**ELEY GUILD HARDY ARCHITECTS**

**Professional Services to**

**Design and Construct a**

**Juvenile Detention Center in**

**Harrison County, Mississippi**

# ELEY GUILD HARDY

ARCHITECTS



PROFESSIONAL SERVICES TO DESIGN AND CONSTRUCT A  
JUVENILE DETENTION CENTER IN  
HARRISON COUNTY, MISSISSIPPI

James H. Eley, FAIA  
W. Taylor Guild, III, AIA, CCS  
David J. Hardy, AIA  
Stephen A. Stojcich, AIA  
Joseph B. Crain, AIA  
Mark E. Lishen, AIA, LEED AP  
J. Heath Perry, AIA, CSI, CDT

Joseph R. Stevens, Jr., AIA, LEED AP  
Eric J. Commarato, AIA  
Kyle L. Kish, AIA, LEED AP

June 27, 2017

Harrison County Board of Supervisors  
c/o Chancery Clerks Office  
1801 23<sup>rd</sup> Avenue  
Gulfport, Mississippi 39502

RE: PROFESSIONAL SERVICES TO DESIGN AND CONSTRUCT A JUVENILE DETENTION CENTER IN HARRISON COUNTY, MISSISSIPPI

Harrison County Board of Supervisors:

Please accept this letter as an expression of **Eley Guild Hardy Architects (EGH)** interest in providing services for the design of the Harrison County Juvenile Detention Center. We are familiar with the project type and scope, and have assembled a team which will ensure a successful project. EGH is a **local Harrison County based architectural firm** and for this project, has teamed with a national, award-winning detention/correctional facility expert out of Memphis, TN - **Evans Taylor Foster Childress Architects (ETFC)**.

For over 60 years EGH, with its staff of 37 including 13 registered architects, has provided design services along the Mississippi gulf Coast, including Harrison County. Local municipal work has been the focus of our firm and the area where we have gained the most expertise.

Of significant relevance to this project is our extensive experience in the design of facilities for Harrison County, as well as our teams extensive experience in the design of **detention facilities** and **correctional facility projects**, including but not limited to the **Juvenile Specialized Treatment Facility; Harrison County Justice Court Buildings** in Biloxi and Gulfport (EGH projects); **DeSoto County, MS Juvenile Detention Facility** and the **Mississippi County, AR Juvenile Detention Facility** (ETFC projects) just to name a few.

Our team of nationally recognized detention/correctional facility consultants includes:

**Evans Taylor Foster Childress Architects** – During the firm's long history, law enforcement, court, justice and correctional facilities have been an important part of their design practice. The firm has established a reputation as a **specialist in the master planning and design of jails, prisons, courtrooms, justice centers,**

**and juvenile facilities.** Completed projects include: the DeSoto County Juvenile Detention Center, Hernando, MS; DeSoto County Jail, Hernando, MS; Hardeman County Criminal Justice Center, Bolivar, TN; the Shelby County Justice Center, Memphis, TN; West Tennessee High Security Prison; Mississippi County Justice Center, Luxora, AR; and many others. ETFC will provide programming and schematic design services along with architectural consultation services throughout the project.

**R&N Systems Design, LLC** - R&N enjoys a growing national reputation among architectural firms and departments of correction as the **leader in the specialized field of security system design**. Combining architectural and engineering expertise, R&N has created innovative design solutions that set new standards in critical areas such as detention, life safety, and security electronics. The firm has won high praise for its depth of knowledge, research-based solutions, and comprehensive system designs that utilize state-of-the-art equipment. The team at R&N have devoted their professional careers to designing highly integrated security systems consisting of multiple subsystems for justice and correctional facilities. R&N is a **single-source consultant for detention equipment and security electronics**. Their portfolio for detention facility design includes more than 360 projects across the nation.

**Smith Seckman Reid, Inc.** - SSR is focused on providing comprehensive engineering facility design and facility consulting solutions for correctional facilities around the world that are **operationally flexible, efficient and sustainable**. At a variety of security levels, SSR has been providing engineering design and consulting services to **correctional and detention facilities since 1970**. SSR will provide specialized Mechanical, Structural, Electrical and Fire Protection engineering services for the new Juvenile Detention Center.

The remaining local and Mississippi based members of our team include:

**Brown, Mitchell & Alexander, Inc.**- BMA is a consulting engineering firm specializing in civil engineering and surveying services for a wide range of clients along the Mississippi Gulf Coast.

**Murray Corban Commercial Foodservice Design Consultants** - Murray Corban has more than 60 years' experience in institutional, **correctional facilities** and healthcare foodservice operations.

**Christian Preus Landscape Architecture** - CPLA is a local, award winning, landscape architecture firm.

Our team has a **robust and integrated understanding** of the project site, existing facilities, and regulatory requirements, which combined with our strategic project management approach will ensure a **state-of-the-art juvenile detention facility**. The integrated team of architects and engineers, interior designers, land planners and construction specialists will work together to provide Harrison County with a single-source of service dedicated to the success of the design and construction of your new Juvenile Detention Facility.

I will serve as Principal in Charge and will assume responsibility for the project on behalf of the team. Mark Lishen, AIA – VP of Federal Projects for EGH will be the Project Manager/Principal Architect on the project and will be Harrison County's primary contact for this project. The work will be performed out of our Biloxi office located at 1091 Tommy Munro Drive which is strategically located within minutes of the project site.

In summary, **Eley Guild Hardy Architects** and our project team have the experience in detention and correctional buildings, an ability and willingness to listen and a dedicated commitment to Harrison County.

We welcome the opportunity to work with you on this important project.

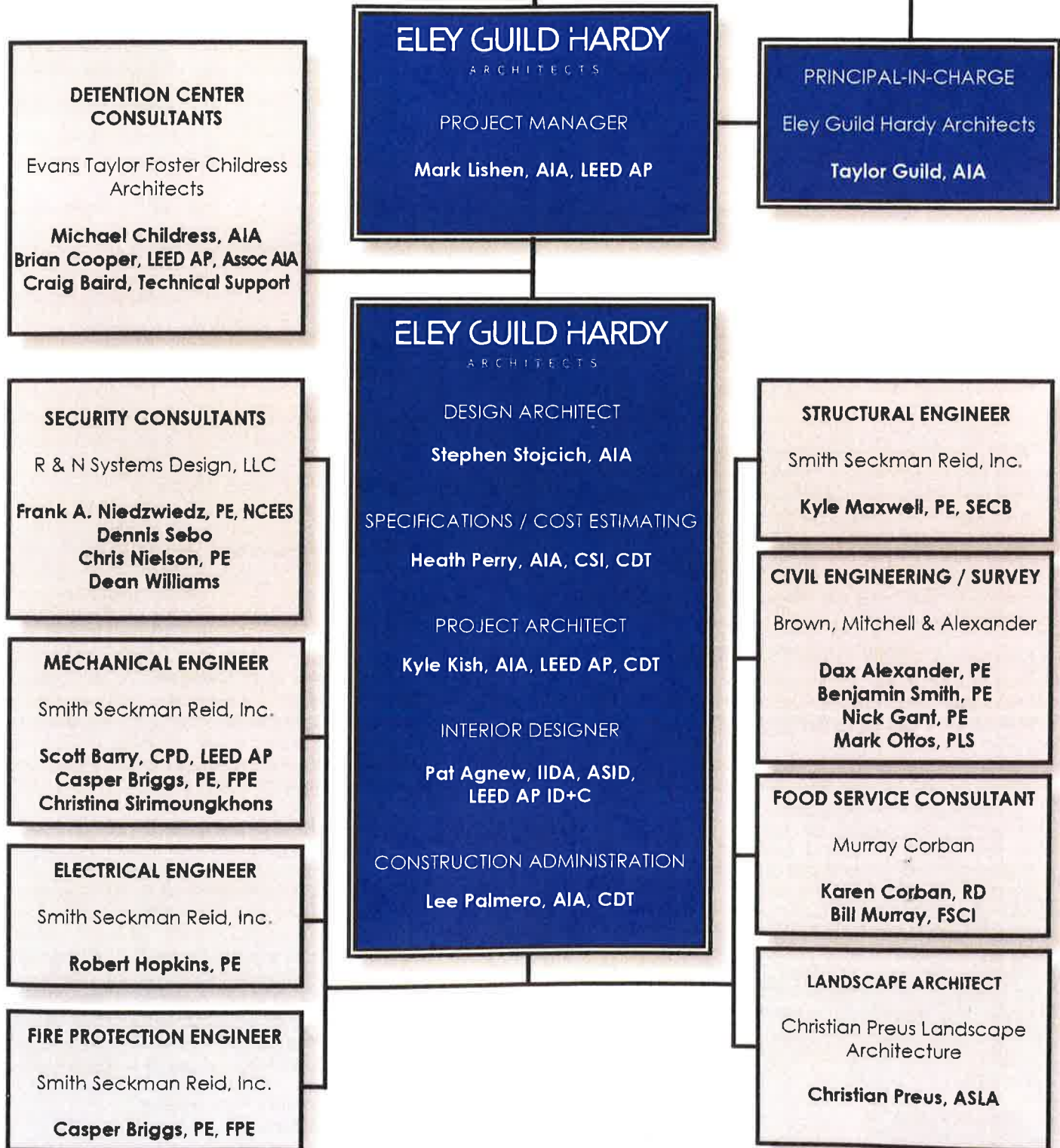
Sincerely,



W. Taylor Guild, III, AIA  
President

## TABLE OF CONTENTS

<b>QUALIFICATIONS</b>		<b>3</b>
<b>1</b>	1.A - Organization Chart	3
	1.B - EGH Staff Qualifications	4
	1.C - Consultant Staff Qualifications	10
<b>EXPERIENCE</b>		<b>31</b>
<b>2</b>	2.A - Eley Guild Hardy Experience	31
	2.B - ETFC Architects experience	37
	2.C - R&N Systems Design experience	54
	2.D - Smith Seckman Reid experience	64
	2.E - Brown Mitchell & Alexander experience	77
	2.F - Murray Corban experience	80
	2.G - Christian Preus experience	81
<b>CAPACITY FOR PERFORMANCE</b>		<b>82</b>
<b>3</b>	3.A - Capacity for Performance	82
	3.B - Estimated time to accomplish each phase of project	85





**W. Taylor Guild, III, AIA**  
**President**



**Role on this project:**  
 Principal in Charge

**Education:**

Bachelor of Architecture / 1986  
 Mississippi State University

**Specialty Licenses:**

1974 / Architect / Mississippi # 2218

**Credentials:**

Construction Specification Institute

W. Taylor Guild, III, a registered architect and a Principal with Eley Guild Hardy currently serves as President of the firm. In 2007, under Guild's leadership, the firm merged with Eley Associates of Jackson, MS. This strategic merger broadened the geographic and client market base of the firm ensuring a sustainable practice for the firm's many clients. Since then, EGH Architects has grown to become the largest architecture firm in the State of Mississippi.

Mr. Guild, has over 31 years of experience in the design and construction of large-scale projects throughout Mississippi, and has served as Principal in Charge on numerous State and Federal projects with CDBG and FEMA funding. He is extremely knowledgeable about designing buildings on the Mississippi Gulf Coast to withstand the harsh saltwater environment.

Recently, Mr. Guild served as Principal in Charge of the Jones Park and Gulfport Small Craft Harbor Improvements after Hurricane Katrina, as well as the Kemper County Administration and Operations Facility. As well, he served in this same capacity, overseeing the new \$40,000,000 Gulfport High School, the \$49,000,000 School of Medicine at University of Mississippi Medical Center in Jackson, and the \$23,000,000 School of Nursing at University of Southern Mississippi in Hattiesburg. Mr. Guild has managed numerous projects for Harrison County including the Juvenile Specialized Treatment Facility for patients coming from the juvenile justice system.



**ELEY GUILD HARDY ARCHITECTS**

1091 Tommy Munro Drive  
 Biloxi, Mississippi 39532

**Relevant Experience:**

**Juvenile Specialized Treatment Facility**  
 Harrison County, Mississippi

**Robert J. Curry Public Safety Center**  
 Gulfport, Mississippi

**Harrison County Adult Detention Center  
 Re-Roofing**  
 Gulfport, Mississippi

**Harrison County Adult Detention Center  
 HVAC Upgrades**  
 Gulfport, Mississippi

**Harrison County Adult Detention Center  
 Chaplain's Office**  
 Gulfport, Mississippi

**Harrison County Justice Court 2nd Judicial District**  
 Biloxi, Mississippi

**Harrison County Justice Court Annex**  
 Gulfport, Mississippi

**Carroll Garlin Justice Building**  
 Jackson, Mississippi

**Harrison County Senior Citizen Center - LoBouy Road**  
 Gulfport, Mississippi

**Woolmarket / Success Work Center**  
 Woolmarket, Mississippi

**Community Shelters**  
 Three Locations  
 Harrison County, Mississippi

**Harrison County Parking Garage**  
 Gulfport, Mississippi

**Harrison County Tourism Administrative Offices**  
 Mississippi Coast Coliseum & Convention Center  
 Biloxi, Mississippi

**Harrison County Development Commission Office**  
 Gulfport, Mississippi

**Harrison County School District  
 New D'Iberville High School**

**New West Harrison County High School**  
 Harrison County, Mississippi



**Mark Lishen, AIA, LEED AP, Principal  
Project Manager / Principal Architect**



**Role on this project:**

Project Manager / Principal Architect

**Education:**

Bachelor of Architecture / 1983  
Mississippi State University

**Specialty Licenses:**

1996 / Architect / Mississippi # 2769  
1986 / Architect / Tennessee # 18573

**Credentials:**

LEED Accredited Professional - 2003  
Alderman - City of Long Beach, 2004-Present

Mark Lishen, AIA, LEED AP is a registered architect with over 34 years of experience and is currently serving as VP of the firm's Federal Division. He has served as Project Manager/Principal Architect for the firm's federal work for over fifteen years.

Mr. Lishen has extensive experience in secure building design, having recently completed numerous projects in Mississippi and other locations on Military Bases throughout the southeastern United States. His knowledge of outdoor perimeter security and intruder detection systems, along with specialized construction requirements to ensure that high security features are built into military facilities beyond those achieved by typical commercial construction contribute to the success of his federal projects.

Mr. Lishen has extensive experience in managing IDIQ contracts and has overseen large-scale projects on many of the military bases throughout the southeast, often assuring that multiple-building projects were completed on schedule and within budget.

Mr. Lishen has been a LEED Accredited Professional since 2003, and has been in charge of assuring compliance with LEED principles for all of EGH's eleven LEED Certified Projects.

**ELEY GUILD HARDY ARCHITECTS**

1091 Tommy Munro Drive  
Biloxi, Mississippi 39532

**Relevant Experience:**

**Air Force Central Command Headquarters**  
Shaw AFB, South Carolina

**National Center for Critical Information Processing/  
Storage**  
Stennis Space Center, Mississippi

**Air Force Office of Special Investigations (Locker House)**  
Keesler Air Force Base, Biloxi, Mississippi

**25th Regimental Headquarters Building  
NCBC - Gulfport, Mississippi**

**Ocean Science NOAA Facility  
Stennis Space Center, Mississippi**

**Maneuver Battle Laboratory  
Fort Benning, Georgia**

**Robert J. Curry Safety Complex**  
Gulfport, Mississippi

**Marine Research Facility**  
Port of Gulfport, Mississippi

**Carroll Garlin Justice Building**  
Jackson, Mississippi

**Harrison County Adult Detention Center  
Re-Roofing**  
Gulfport, Mississippi

**Harrison County Adult Detention Center  
HVAC Upgrades**  
Gulfport, Mississippi

**Harrison County Adult Detention Center  
Chaplain's Office**  
Gulfport, Mississippi

**Harrison County Justice Court 2nd Judicial District**  
Biloxi, Mississippi

**Harrison County Justice Court Annex**  
Gulfport, Mississippi

**Harrison County Senior Citizen Center - LoBouy Road**  
Gulfport, Mississippi

**Woolmarket / Success Work Center**  
Woolmarket, Mississippi

**Harrison County Parking Garage**  
Gulfport, Mississippi



**Stephen Stojcich, AIA, Principal  
Project Designer**



**Role on this project:**  
Design Architect

**Education:**

Bachelor of Architecture / 1990  
Mississippi State University

**Specialty Licenses:**

1994 / Architect / Mississippi # 2884  
2008 / Architect / Mississippi # 6800  
1996 / Architect / Mississippi # 0015599

Stephen Stojcich, AIA is a registered architect with over 26 years of experience, and currently serves as Director of Design for the firm. He leads the design team in establishing and developing a design concept for each project to ensure that all of the clients functional requirements are met in addition to creating a building that is beautiful and sustainable. Many EGH projects have been recognized for design excellence by the AIA, ASID, and numerous other organizations.

Mr. Stojcich has designed numerous buildings along the Gulf Coast as well as throughout the State of Mississippi for public clients, including community colleges, universities and municipalities.

**ELEY GUILD HARDY ARCHITECTS**

1091 Tommy Munro Drive  
Biloxi, Mississippi 39532

**Relevant Experience:**

**Robert J. Curry Public Safety Center**  
Gulfport, Mississippi

**Juvenile Specialized Treatment Facility**  
Harrison County, Mississippi

**Harrison County Adult Detention Center  
Chaplain's Office**  
Gulfport, Mississippi

**Harrison County Justice Court 2nd Judicial District**  
Biloxi, Mississippi

**Harrison County Justice Court Annex**  
Gulfport, Mississippi

**Community Shelters**  
Three Locations  
Harrison County, Mississippi

**Harrison County Parking Garage**  
Gulfport, Mississippi

**Harrison County Tourism Administrative Offices**  
Mississippi Coast Coliseum & Convention Center  
Biloxi, Mississippi

**Harrison County Development Commission Office**  
Gulfport, Mississippi

**Harrison County School District**  
**New D'Iberville High School**  
**New West Harrison County High School**  
Harrison County, Mississippi

**Kyle Kish, AIA, LEED AP, CDT, Associate  
Project Architect**



**Role on this project:**  
Project Architect

**Education:**

Bachelor of Architecture / 2002  
Mississippi State University

**Specialty Licenses:**

2007 / Architect / Mississippi # 4202

**Credentials:**

Construction Documents Technologist / 2000  
LEED Accredited Professional / 2007

Kyle Kish, AIA, LEED AP, CDT, Associate is a Registered Architect with over 15 years of experience in all aspects of project design and management and has extensive experience on Department of Defense projects having completed projects at Fort Benning, Shaw AFB, NAS Pensacola, NAS Meridian, Keesler AFB, Stennis Space Center and many others.

Mr. Kish served as Project Architect during the preparation of the Bridging Documents for the \$20,000,000 Shared Services Center for the State of Mississippi and served as Project Architect for the \$60,000,000 NCCIPS design/build project at Stennis Space Center.

He is currently serving as Architect on over \$45,000,000 worth of work for Shaw Air Force Base, Fort Benning, NAS Pensacola and the Coast Guard in Dulac, LA, scheduled to be completed by summer of 2017.

Kyle is an exceptional professional with expertise in multi-million dollar commercial design and construction. He is a progressive Senior Project Architect with notable success in design and development of complex facilities. He excels in the area of code compliance, project management, production and team leadership.

**ELEY GUILD HARDY ARCHITECTS**

1091 Tommy Munro Drive  
Biloxi, Mississippi 39532

**Relevant Experience:**

**Robert J. Curry Public Safety Center**  
Gulfport, Mississippi

**Harrison County Justice Court 2nd Judicial District**  
Biloxi, Mississippi

**Harrison County Justice Court Annex**  
Harrison County, Mississippi

**Harrison County Senior Citizen Center - LoBouy Road**  
Gulfport, Mississippi

**Juvenile Specialized Treatment Facility  
Upgrades and Renovations**  
Harrison County, Mississippi

**Community Shelters**  
Three Locations  
Harrison County, Mississippi

**Harrison County Parking Garage**  
Gulfport, Mississippi

**Harrison County Tourism Administrative Offices**  
Mississippi Coast Coliseum & Convention Center  
Biloxi, Mississippi

**Harrison County Development Commission Office**  
Gulfport, Mississippi

**Harrison County School District**  
**New D'Iberville High School**  
**New West Harrison County High School**  
Harrison County, Mississippi

**Air Force Central Command Headquarters**  
Shaw AFB, South Carolina

**National Center for Critical Information Processing/  
Storage**  
Stennis Space Center, Mississippi

**Air Force Office of Special Investigations (Locker House)**  
Keesler Air Force Base, Biloxi, MS



**Heath Perry, AIA, CSI, CDT, Principal  
Specification / Cost Estimating**



**Role on this project:**

Architectural Specifications / Cost Estimating / Quality Control

**Education:**

Bachelor of Architecture / 1998  
University of Tennessee

**Specialty Licenses:**

2009 / Architect / Mississippi # 4460

**Credentials:**

Construction Specifications Institute  
Construction Documents Technologist

Heath Perry, AIA is a registered architect with over 19 years of experience, and currently is responsible for Specifications and Cost Estimating for the entire firm. With that responsibility, Mr. Perry touches each and every project and assures that quality control between drawings and specifications are maintained.

Mr. Perry has extensive experience in production and systems research, preparation of project manuals including contract and bidding requirements, specifications, coordination of drawings and specifications, detailed cost estimating and life cycle cost analysis.

**ELEY GUILD HARDY ARCHITECTS**

1091 Tommy Munro Drive  
Biloxi, Mississippi 39532

**Relevant Experience:**

**Robert J. Curry Public Safety Center**

City of Gulfport  
Gulfport, Mississippi

**Harrison County Tourism Administrative Offices**

Mississippi Coast Coliseum & Convention Center  
Biloxi, Mississippi

**Juvenile Specialized Treatment Facility  
Upgrades and Renovations**

Harrison County, Mississippi

**Harrison County Adult Detention Center  
Re-Roofing**

Gulfport, Mississippi

**Harrison County Adult Detention Center  
HVAC Upgrades**

Gulfport, Mississippi

**Harrison County Adult Detention Center  
Chaplain's Office**

Gulfport, Mississippi

**Harrison County Justice Court 2nd Judicial District**

Biloxi, Mississippi

**Harrison County Justice Court Annex**

Gulfport, Mississippi

**Harrison County Senior Citizen Center - LoBouy Road**

Gulfport, Mississippi

**Woolmarket / Success Work Center**

Woolmarket, Mississippi

**Community Shelters**

Three Locations

Harrison County, Mississippi

**Harrison County Parking Garage**

Gulfport, Mississippi

**Harrison County Development Commission Office**

Gulfport, Mississippi

**Harrison County School District**

**New D'Iberville High School**

**New West Harrison County High School**

Harrison County, Mississippi

**Pat Agnew, IIDA, ASID, CDT, LEED AP ID+C**  
**Interior Designer**



**Role on this project:**  
 Interior Designer

**Education:**  
 Bachelor of Fine Arts - Interior Design / 1976  
 Arizona State University

**Specialty Licenses:**  
 1997 / Interior Design / NCIDQ# 14106  
 2012 / Mississippi / Certified Interior Designer #6  
 2008 / Tennessee / Registered  
 Interior Designer #1202

**Credentials:**  
 LEED Accredited Professional

Pat Agnew is a registered interior designer with over 30 years of experience providing full service Interior Design services including: Space Planning, Space Management, Interior Finish Selections, Pre-wired Workstation Specification and Design, Procurement and Installation Supervision of Furniture and Equipment.

Ms. Agnew has solid experience in commercial interior design for administrative projects focusing primarily on product suitability research, specification and documentation on a wide variety of projects ranging in size from our smallest IDIQ contracts to multi-million dollar university and private sector facilities. She is a LEED Accredited Professional and NCIDQ certified. Through her LEED AP status, she has promoted the principles of sustainable design by providing high quality indoor environments that enhance user/occupant quality of life through the use of stimulating and pleasant colors, lighting, and furniture.

**ELEY GUILD HARDY ARCHITECTS**

1091 Tommy Munro Drive  
 Biloxi, Mississippi 39532

**Relevant Experience:**

**Robert J. Curry Public Safety Center**  
 Gulfport, Mississippi

**Carroll Gartin Justice Building**  
 Jackson, Mississippi

**Woolfolk State Office Building**  
 Jackson, Mississippi

**School of Law**  
 University of Mississippi  
 Oxford, Mississippi

**New School of Medicine**  
 University of Mississippi Medical Center  
 Jackson, Mississippi

**Guyton Research Facility**  
 University of Mississippi Medical Center  
 Jackson, Mississippi

**Diagnostic Instrumentation and Analysis Laboratory**  
 Mississippi State University  
 Starkville, Mississippi

**College of Business - Scianna Hall**  
 University of Southern Mississippi  
 Hattiesburg, Mississippi

**Polymer Research Facility**  
 University of Southern Mississippi  
 Hattiesburg, Mississippi

While at another firm:

**Rankin County Juvenile Justice Center**  
 Rankin County, Mississippi

**Veterans Administration, PTSD Unit**  
 Jackson, Mississippi

**Tupelo Police Department**  
 Tupelo, Mississippi

**Long Beach Fire Station No. 2**  
 Long Beach, Mississippi

**Lee Palermo, AIA, CDT**  
**Construction Administrator**



**Role on this project:**  
Construction Administrator

**Education:**  
Bachelor of Architecture / 1991  
Louisiana State University

**Specialty Licenses:**  
2008 / Architect / Mississippi # 4334

**Credentials:**  
2000 / Construction Document Technologist

Lee Palermo, AIA, CSI, CDT, is a Registered Architect with over 26 years of experience in all aspects of Construction Administration and project management and has extensive CA experience on EGH projects.

Mr. Palermo has served as Construction Administrator on a combined 100+ projects over the span of 26 years ranging from \$50,000 up to \$34,000,000 worth of work for several school districts along the coast including Biloxi School District, Gulfport School District, Pass Christian School District, Long Beach School District, Bay/Waveland School District, Hancock County School District, Harrison County School District, and Catholic Diocese of Biloxi School Districts.

His experience includes governmental work for the MS Bureau of Buildings, Gulfport Job Corps, USPS, and most recently completed the MDOT Welcome Center on the Ohr-O'Keefe Museum of Art campus in Biloxi, MS.

**ELEY GUILD HARDY ARCHITECTS**

1091 Tommy Munro Drive  
Biloxi, Mississippi 39532

**Relevant Experience:**

**Robert J. Curry Public Safety Center**  
Gulfport, Mississippi

**Harrison County Tourism Administrative Offices**  
Mississippi Coast Coliseum & Convention Center  
Biloxi, Mississippi

**Juvenile Specialized Treatment Facility**  
**Upgrades and Renovations**  
Harrison County, Mississippi

**Harrison County Adult Detention Center**  
**Re-Roofing**  
Gulfport, Mississippi

**Harrison County Justice Court 2nd Judicial District**  
Biloxi, Mississippi

**Harrison County Justice Court Annex**  
Gulfport, Mississippi

**Harrison County Senior Citizen Center - LoBouy Road**  
Gulfport, Mississippi

**Woolmarket / Success Work Center**  
Woolmarket, Mississippi

**Community Shelters**  
Three Locations  
Harrison County, Mississippi

**Harrison County Parking Garage**  
Gulfport, Mississippi

**Harrison County Development Commission Office**  
Gulfport, Mississippi

**Harrison County School District**  
**New D'Iberville High School**  
**New West Harrison County High School**  
Harrison County, Mississippi







**Michael Childress, AIA, Principal**  
 Architect, Project Principal

Architecture Interior Design Planning  
 343 North Main Street  
 Memphis Tennessee 38103  
 Telephone: 901.525.5344  
 Facsimile: 901.525.5420



EVANS LAYCOCK POSTER CHILDRESS ARCHITECTS

**Education:**  
 University of Memphis

**Registration:**  
 Tennessee

**Professional Organizations:**  
 American Institute of Architects

AIA Committee on Architecture in Education

AIA Committee on Criminal Justice

**Years with Firm:**  
 30 Years

Michael Childress is a senior designer and Principal in the firm. With 30 years of experience, he has been responsible for many of the firm's major projects especially in the field of Justice and Education. His experience includes planning, programming, design, contract documents, and contract administration.

- Relevant Experience:**  
 DeSoto County Juvenile Justice Center  
 Renovations to the Shelby County Justice Center  
 Hardeman County Correction Center  
 CCA Juvenile Facility Prototype  
 Tall Trees Juvenile Facility  
 Jackson County Jail  
 Mississippi County Law Enforcement  
 Shelby County Juvenile Training Center  
 DeSoto County Jail Expansion - Phase I & II  
 TDOC West Tennessee High Security Prison  
 TDOC West Tennessee Medium Security Prison  
 Tallahatchie County Correctional Center Expansion – Phase 1 & 2  
 Wilkinson County Correction Center  
 Webb County Correctional Center Expansion  
 Bay County Correctional Facility  
 Whiteville Correctional Center  
 INS Processing Center - Houston  
 INS Processing Center - Laredo  
 Shelby County Pre-Trial Detention Center  
 Webb County Correctional Center  
 Shelby County Correctional Center Phases 1, 2, 3 & 4  
 Silverdale Correctional Center  
 Marion Adjustment Center

**R. Ladd Garey, AIA, Principal**  
 Architect, Senior Project Manager

**Education:**  
 University of Arkansas  
 Bachelors of Architecture  
 2001

**Registration:**  
 Tennessee and Arkansas

**Professional Organizations:**  
 American Institute of Architects

NCARB Certified

Rotary International

**Years with Firm:**  
 13 Years

Ladd Garey is a project manager and Principal in the firm. With 21 years of experience, he has been responsible for many different types of projects including: Justice, Education, Administrative, Municipal and Industrial Facilities. His experience includes programming, design, contract documents, and contract administration.

- Relevant Experience:**  
 Renovations to the Shelby County Justice Center  
 Jackson County Jail – Phase I  
 DeSoto County Jail Expansion – Phase II  
 DeSoto County Sheriff's Office  
 Marian County Adjustment Center  
 TDOC Mark Luttrell Correctional Complex  
 TDOC Northwest Correctional Complex  
 TDOC Turney Center Industrial Complex  
 TDOC Statewide Upgrades  
 Police Sub-Station – West Helena and Poinsett County  
 Jericho Police Station and Court Room  
 Arkansas Child Support Enforcement Building  
 Veterans Health Administration  
 Jackson County Jail



**Brian Cooper, LEED AP, Associate AIA**

Project Coordinator

Architecture Interior Design Planning

343 North Main Street  
Memphis Tennessee 38105  
Telephone: (901) 525-5344  
Facsimile: (901) 525-5420

EVANS JAYCOFF FOSTER CHILDRRESS ARCHITECTS

**Education:**Southern Illinois University -  
Carbondale  
B. Architecture 2004

Brian Cooper is a senior project manager and one of our specialists in LEED design. He has been responsible for production of many of the firm's projects. His background includes contract documents, specifications, and contract administration.

**Professional Organizations:**Associate Member, American  
Institute of ArchitectsAccredited Professional,  
Leadership in Energy and  
Environmental DesignMember, United States Green  
Building Council-Memphis  
ChapterMember, National Council of  
Architectural Registration  
Boards

Member, Memphis Chapter AIA

**Years with Firm:**

10 Years

**Relevant Experience:**

DeSoto County Juvenile Justice Center  
Tallahatchie County Correctional Center Expansion – Phase 1  
Hardeman County Correction Center  
Tallahatchie County Correctional Center Expansion – Phase 2  
Mississippi County Law Enforcement Center  
Jackson County Jail  
Bay County Correctional Facility  
Bay County Courthouse Expansion  
DeSoto County Jail Expansion - Phase I & II  
DeSoto County Sheriff's Office  
Hardeman County Criminal Justice Center  
Marion Adjustment Center  
TDOC Statewide Upgrades  
Southeast Police Precinct  
Military Base, Gamberi, Afghanistan  
Webb County Correctional Center Expansion  
INS Processing Center - Houston  
Otter Creek Correctional Center

**Nicholas Pirani, LEED AP, Associate AIA**

CAD Coordinator

**Education:**University of Memphis  
B. Architecture 2006

Nicholas Pirani is a project coordinator and CAD operator. He has been involved in the production of many of the firm's projects. His background includes contract documents, specifications, and contract administration.

**Professional Organizations:**Associate Member, American  
Institute of ArchitectsAccredited Professional,  
Leadership in Energy and  
Environmental DesignMember, United States Green  
Building Council-Memphis  
ChapterMember, National Council of  
Architectural Registration  
Boards

Member, Memphis Chapter AIA

**Years with Firm:**

12 Years

**Relevant Experience:**

DeSoto County Juvenile Justice Center  
Tall Trees Juvenile Facility  
Renovations to the Shelby County Justice Center  
Tallahatchie County Correctional Center Expansion – Phase 2  
Webb County Correctional Center Expansion  
Mississippi County Law Enforcement Center  
Jackson County Jail – Phase I  
TDOC Northwest Correctional Complex  
TDOC Turney Center Industrial Complex  
Bay County Correctional Facility  
Marion Adjustment Center  
DeSoto County Jail Expansion – Phase II  
DeSoto County Sheriff's Office  
TDOC Statewide Upgrades  
Southeast Police Precinct  
Military Base, Gamberi, Afghanistan  
Hardeman County Correction Center  
Hardeman County Criminal Justice Center  
Otter Creek Correctional Center



**Craig Baird**  
Technical Support

Architecture Interior Design Planning  
343 North Main Street  
Memphis Tennessee 38105  
Telephone: 901.525.5344  
Facsimile: 901.525.5420



EVANS TAYLOR FOSTER CHILDRESS ARCHITECTS

**Education:**  
Mississippi State University

Craig Baird is a project manager and CAD operator. With over 26 years of total experience, he has been involved in the production of many of the firm's projects. His background includes contract documents and contract administration.

**Years with Firm:**  
20 Years

**Relevant Experience:**

- DeSoto County Juvenile Justice Center
- Tall Trees Juvenile Facility
- Shelby County Juvenile Justice Center
- Northwest - Indiana Juvenile Facility
- Bay County Courthouse Expansion
- Bay County Correctional Facility
- TDOC Mark Luttrell Correctional Complex
- Jackson County Jail
- DeSoto County Jail Expansion - Phase I & II
- DeSoto County Sheriff's Office
- Military Base, Gamberi, Afghanistan
- Military Base, Camp Zafar, Herat, Afghanistan
- TDOC Northwest Correctional Complex
- TDOC Turney Center Industrial Complex
- TDOC Statewide Upgrades
- Tallahatchie County Correctional Center Expansion – Phase 2
- TDOC West Tennessee High Security Prison
- TDOC West Tennessee Medium Security Prison
- Wilkinson County Correction Center
- Mississippi County Law Enforcement Center

**Phil Rose**  
Technical Support

**Education:**  
University of Arkansas  
B. Architecture 1987

Phil Rose is one of the firm's senior project managers and CAD operators. With over 25 years' experience, he has been responsible for production of many of the firm's projects. His background includes programming, design, contract documents, specifications, and contract administration.

**Years with Firm:**  
19 Years

**Relevant Experience:**

- DeSoto County Juvenile Justice Center
- Tall Trees Juvenile Facility
- Northwest - Indiana Juvenile Facility
- Shelby County Juvenile Justice Center
- Shelby County Archives Offices
- Shelby County Mayor's Admin Offices
- ANA Garrison at Camp Zafar
- ANA Garrison at Camp Gamberi
- University of Tennessee GMP Facility
- University of Tennessee College of Pharmacy – 5th Floor Build-Out
- University of Memphis Athletic Training Facility
- NSA Building P36V Renovations
- NSA Open End Contract Multiple Projects
- NSA Applied Training School
- The MED Central Pharmacy Relocation
- Board of Regents – West TN Career Center
- Manassas High School
- Rhodes College – Buckman Hall Renovation
- Rhodes College – Clough Renovations
- Rhodes College – Spann Hall Renovation
- U of M Athletic Office Addition





**Chris Nielsen, PE, Principal**  
**Security Consultant / Professional Engineer**



**Role on this project:**  
Security Consultant Project Manager

**Education:**  
Bachelor of Science / Electrical Engineering (Minor in Mathematics) / 2007 / Christian Brothers University  
President's Award for Engineering Department  
Christian Brothers University, 2007  
Associates of Arts, Business Administration  
Northwest Mississippi CC, 2002

**Specialty Licenses:**  
Professional Engineer: Tennessee, Utah, Hawaii, Oregon

**Professional Affiliations**

National Society of Professional Engineers (NSPE)  
Tennessee Society of Professional Engineers (TSPE)  
Building Industry Consulting Service International (BICSI)  
Institute of Electrical and Electronics Engineers (IEEE)

Mr. Nielsen has nine years of experience in Building Information Modeling (BIM), computer aided drafting, network design, and project management. He is adept in the latest design software including Revit, Auto-CAD and Pro-Engineer. His expertise in these areas allows R&N to develop highly detailed construction documents that clearly define the security system scope.

Mr. Nielsen has an intricate knowledge of computer, electrical, low voltage security, communication and fire alarm system design.

Prior to his time at R&N. Mr. Nielsen managed a private business that averaged over two million dollars in annual sales for 13 years. His extensive business background has proven an asset in his project management.

**RN SYSTEMS DESIGN, L.L.C.**

615 Oakleaf Office Lane  
Memphis, Tennessee 38117

**Relevant Experience:**

**Desoto County Jail Expansion**  
**Hernando, MS**  
264 Bed Expansion & Renovation – \$11.4 Million  
Architect: Evans Taylor Foster Childress  
Owner: Desoto County, Mississippi

**Desoto County Jail**  
**Hernando, MS**  
New 300 Bed County Jail – \$25 Million  
Architect: Evans Taylor Foster Childress  
Owner: Desoto County, Mississippi

**Echo Glenn Children's Center**  
24 Bed Renovation and Classroom Addition  
\$6.2 Million  
Owner: Washington State Department of Social and Health Services

**County of Monterey Juvenile**  
Salinas, CA  
New 102 Bed Campus Facility with Administration and Classrooms  
\$38 Million  
Owner: Monterey County, California

**Jackson County Jail**  
Newport, AR  
New 100 Bed Jail Building Complex  
\$8 Million  
Architect: Evans Taylor Foster Childress  
Owner: Jackson County, Arkansas

**Hardeman County Criminal Justice Center**  
Bolivar, TN  
New 176 Bed Facility with Sheriff's Dept. & Courts – \$18 Million  
Architect: Evans Taylor Foster Childress  
Owner: City of Bolivar, TN

**Skagit County Jail**  
New 308 Bed Facility with Court room  
\$44 Million  
Owner: Skagit County, Washington

**Frank A. Niedzwiedz, Jr., PE, Principal  
Security Consultant / Professional Engineer**



**Role on this project:**

Security Consultant / Security and Low Voltage

**Education:**

Bachelor of Science / Electrical Engineering / 1982  
Christian Brothers University

**Specialty Licenses:**

Registered Professional Engineer:  
Licensed in 31 states including  
Mississippi / PE# 14881

**Professional Affiliations:**

National Council of Examiners for Engineering and  
Surveying (NCEES)  
Institute of Electrical and Electronics Engineers (IEEE)  
National Society of Professional Engineers (NSPE)  
Tennessee Society of Professional Engineers (TSPE)  
American Correction Association (ACA)  
America Jail Association (AJA)

**Awards / Accolades:**

2014 Outstanding Engineer of the Year Award / TSPE-  
Memphis Chapter

Mr. Niedzwiedz has dedicated his 33 year career to justice and correctional facilities focusing on the low voltage electronics systems. Mr. Niedzwiedz responsibilities have included systems design, construction administration, and commissioning while utilizing the latest technologies to serve the client's needs. Mr. Niedzwiedz is licensed in 31 states where he has worked on projects utilizing his extensive background for the design of correctional facilities. His years of education and experience have enabled him to deal with the integration of complex low voltage systems on all size projects for Federal, State and local jurisdictions.

While a principal at R&N, Mr. Niedzwiedz has overseen the security system design of over 50 County jails, 12 Prisons, and 18 Prison expansions. These facilities include the most secure facilities in the United States of America.

**RN SYSTEMS DESIGN, L.L.C.**

615 Oakleaf Office Lane  
Memphis, Tennessee 38117

**Relevant Experience:**

**Van Horn Youth Treatment Center**

Riverside, California  
100 Bed Secure Facility for High Risk Youth Offenders

**Tallahatchie County Correctional Facility  
Tutwiler, Mississippi**

720 Bed Housing Addition  
Architect: Evans Taylor Foster Childress – Memphis, TN

**Jefferson Davis County Detention Center  
Prentiss, Mississippi**

New 100 Bed Jail

**Bay County Correctional Annex**

Panama City, Florida  
688 Bed Addition  
Architect: Evans Taylor Foster Childress

**United States Penitentiary - ADX, Florence, CO**

Security Systems Upgrade for 550 Bed Maximum Security  
Prison  
\$4.5 Million  
Owner: Federal Bureau of Prisons

The Federal Bureau of Prison's Supermax prison for inmates who are deemed in need of the tightest control. R&N Systems Design provided design and project management for the upgrade of the facilities security system between 2010 and 2014.

**Wyoming Medium Correctional Institution**

Torrington, Wyoming  
696 Bed Medium Security Facility

**Deer Ridge Correctional Institution**

Madras, Oregon  
1867 Bed Medium Security Prison

**Nevada Southern Detention Center**

Pahrump, Nevada  
1176 Bed Medium Security Facility

**Kings County Jail**

Hanford, California  
Phase II & Phase III Jail Expansion



**Dennis A. Sebo, Principal  
Security Consultant**



**Role on this project:**

Peer Review/ Security, Detention, and Low Voltage

**Education:**

Bachelor of Science / Electrical Engineering  
2001 / University of Memphis

Mr. Sebo has dedicated his career to Industrial Maintenance and Correctional Facilities. Mr. Sebo has focused on low voltage electronic systems that served the security and Life-Safety needs of the correctional industry. He has had a hands-on role in the design of over 25 low-voltage system projects representing R&N Systems. More specifically, his responsibilities have included systems design, fabrication documents and construction administration while utilizing the latest technologies to serve the client's needs.

His years of education and experience have enabled him to deal with the integration of complex low voltage systems on all size projects for state and local jurisdictions. Mr. Sebo has a decade of experience in the fabrication of control systems for justice facilities. His experience and expertise in estimating, purchasing, and fabrication is rare in the consulting field.

**RN SYSTEMS DESIGN, L.L.C.**

615 Oakleaf Office Lane  
Memphis, Tennessee 38117

**Relevant Experience:**

**Hancock County Public Safety Complex,  
Bay St. Louis, MS**

84,882 SF, 300 Bed New Multi-Use Justice and  
Detention Center  
\$25 Million  
Owner: Hancock County

**Adams County Correctional Center  
Natchez, MS**

310,000 SF, 1,668 Bed Medium Security Prison  
\$95 Million  
Owner: Corrections Corporation of America

**Bledsoe County Correctional Complex**

Pikeville, TN  
451,881 SF, 1,444 Bed New Multi-Level Security Prison  
\$145 Million  
Owner: State of Tennessee - Department of  
Corrections

**Trousdale County Correctional Center**

Hartsville, Tennessee  
2160 Bed Medium Security Facility \$105 Million  
Owner: Corrections Corporation of America

**Jenkins Correctional Facility**

Millen, GA  
223,000 SF, 1,150 Bed Medium Security Prison  
\$65 Million  
Owner: Corrections Corporation of America

**Snohomish County Correctional Facilities**

Everett, WA  
Locking Controls Upgrade/Retrofit for 1300 Bed  
Facilities  
\$1.4 Million  
Owner: Snohomish County Facilities Management

**La Palma Correctional Center,**

Eloy, AZ  
594,000 SF, 3060 Bed Medium Security Prison with  
Administration and Support Buildings  
\$180 Million  
Owner: Corrections Corporation of America



**Michael Dean Williams, Principal  
Security Consultant**



**Role on this project:**

Construction Administration of Security and Detention

**Education:**

Nashville Tech (Trade School), course of study:  
electronics and electrical systems

Mr. Williams has more than 25 years of experience in project management, job site construction management, quality assurance, logistics support, integrated engineering, operations and systems installation. He has extensive experience with private industry and state government programs and systems.

Before his time at R&N, Mr. Williams was personally involved in the installation of electrical and security systems on over twenty five prisons. Mr. Williams offers a wealth of "hands on" knowledge of electrical, low voltage security, communication and fire alarm system design, integrations and installation practices.

During his time at R&N, Mr. Williams has overseen the construction of over 25 facilities. Mr. Williams has earned praise for his performance in multi-disciplined project environment and is skilled in achieving cost reduction through analysis, innovation and problem solving.

**RN SYSTEMS DESIGN, L.L.C.**

615 Oakleaf Office Lane  
Memphis, Tennessee 38117

**Relevant Experience:**

**Van Horn Youth Treatment Center**

Riverside, California  
100 Bed Secure Facility for High Risk Youth Offenders

**United States Penitentiary - ADX**

Florence, CO  
Security Systems Upgrade for 550 Bed Maximum Security Prison  
\$4.5 Million  
Owner: Federal Bureau of Prisons

The Federal Bureau of Prison's Supermax prison for inmates who are deemed in need of the tightest control. R&N Systems Design provided design and project management for the upgrade of the facilities security system between 2010 and 2014.

**Clark County Detention Center**

Las Vegas, Nevada  
North Tower Renovations / Security Upgrade

**South Correctional Entity-King County (SCORE)**

Des Moines, Washington  
New 813 Bed Multi-Custody Facility

**San Diego Detention Center**

East Otay Mesa, California  
1026 Bed Detention Center

**Chillicothe Reception & Diagnostic Center**

Chillicothe, Missouri  
1636 Bed Women's Facility

**Red Rock Correctional Center**

Eloy, Arizona  
1596 Bed Medium Security Facility

**Sguaro Correctional Center**

Eloy, Arizona  
1926 Bed Medium Security Facility

**Kyle Maxwell, PE, SECB**  
**Senior Structural Engineer**



**Role on this project:**  
 Structural Engineer

**Education:**

Bachelor of Science / Civil Engineering  
 University of Tennessee / 2000

**Specialty Licenses:**

Registered professional engineer in the states of Missouri, Oklahoma, and Tennessee

**Affiliations:**

American Institute of Steel Construction (AISC)  
 Structural Engineers Certification Board (SECB)  
 West Tennessee Structural Engineers Association (WTSEA)  
 Tennessee Society of Professional Engineers (TSPE)

Kyle earned his Bachelor of Science in Civil Engineering at the University of Tennessee in Knoxville. He has over 15 years of engineering experience in structural building design, analysis, seismic rehabilitation, & project engineering for institutional, commercial, & industrial clients. His experience includes the design of reinforced concrete, steel, & masonry structures, including foundation design on various soil types. Kyle is responsible for the preparation of specifications, contract documents, cost estimates, & coordination with other engineering disciplines & clients. He was a Board member of the State of Tennessee Structural Engineer's Association, as well as a past vice-president of the West Tennessee Structural Engineers Association where he continues as an active member.



2650 Thousand Oaks Blvd., Suite 3200  
 Memphis, TN 38118

**Relevant Experience:**

Collierville Justice Center • Collierville, TN  
 Decatur County Detention Center • Decatur County, TN  
 Robertson County Jail • Springfield, TN  
 Forrest City Federal Correctional Institution • Forrest City, AR  
 Houston Institutional Facility • Houston, TX  
 Logan County Jail • Logan County, OK  
 Miller County Repairs • Texarkana, AR  
 Mississippi County Law Enforcement Center • Luxora, AR  
 Noble County Jail • Noble County, OK  
 Polluck Louisiana United States Penitentiary • Polluck, LA  
 Saline County Detention Center • Benton, AR  
 Sevier County Jail • Sevier, AR  
 White County Jail • Searcy, AR  
 Northwest Corrections Complex • Tiptonville, TN
 

- Chiller/CT Replacement

 Turney Center Correctional Facility • Only, TN
 

- HVAC Replacement

 West Tennessee State Penitentiary • Henning, TN
 

- HVAC Replacement
- Loop Replacement
- Energy Upgrade/Improvements

 Fire Academy Addition • Pearl, MS  
 Franklin Fire Station No. 8 • Franklin, TN  
 Tennessee Bureau of Investigation • Memphis, TN
 

- Regional Consolidated Laboratory

 Oakridge National Laboratory • Oakridge, TN
 

- Department of Energy

 Tennessee Bureau of Investigation • Knoxville, TN
 

- New Regional Lab Facility

 City of Germantown • Germantown, TN
 

- Fire Station
- Greenway (DTD)

 AirForce Center for Engineering & the Environment • Afghanistan  
 Camp Hero • Afghanistan
 

- Utilities Upgrade Power Plant

 Camp Zafar • Afghanistan  
 Fort Lee 49th Group • Fort Lee, VA
 

- Temporary Facilities

 Fort Riley Combat Aviation Brigade • Fort Riley, KS

**Casper Briggs, PE, FPE**  
**Mechanical Engineer**  
**Fire Protection Engineer**



**Role on this project:**  
Mechanical Engineer  
Fire Protection Engineer

**Education:**  
Bachelor of Science / Mechanical Engineering  
Christian Brothers University / 2006

**Specialty Licenses:**  
Registered professional engineer in the states of  
Tennessee and Arkansas  
Fire Protection Engineer (FPE)

**Affiliations:**  
American Society of Heating, Refrigerating, and Air-  
Conditioning Engineers (ASHRAE)  
Board of Governors ASHRAE Memphis Chapter  
City of Bartlett, TN Design Review Commission

---

Casper is a Mechanical Engineer who joined SSR in 2011 with more than a decade of experience in the engineering industry. He currently serves as a lead technical resource and department manager.



2650 Thousand Oaks Blvd., Suite 3200  
Memphis, TN 38118

**Relevant Experience:**

- Desoto County Jail • Hernando, MS
- Leflore County Jail • Greenwood, MS
- Noxubee County Detention Facility • Macon, MS
- Wilder Youth Development Center • Somerville, TN
  - Boiler Investigation
- West Tennessee State Penitentiary • Henning, TN
  - Loop Replacement
  - Wastewater Treatment Plant Upgrade Water/Wastewater Treatment Plant Study
  - Energy Upgrade/Improvements
  - HVAC Replacement
  - Security Addition
  - Hot Water Distribution Replacement
- Arlington Developmental Center • Arlington, TN
  - Essential Maintenance
- Northwest Correctional Complex • Tiptonville, TN
  - Chiller & Cooling Tower Replacement
- South Central Correctional Facility • Clifton, TN
  - Heating System & Loop Replacement
  - Chiller & Tower Replacement
- Mark Luttrell Correctional Complex • Memphis, TN
  - Steam/Hotwater Plant Study
  - Freezer/Cooler Renovations
- Corrections Corporation of America • Beatyville, KY
  - Beatyville Correctional Facility Renovations

**Robert Hopkins, PE**  
**Electrical Engineer**



**Role on this project:**  
 Electrical Engineer

**Education:**

Bachelor of Science / Electrical Engineering  
 Christian Brothers University / 1973

**Specialty Licenses:**

Registered professional engineer in the states of Tennessee, Alabama, Arizona, Arkansas, Florida, Georgia, Indiana, Maryland, Mississippi, Missouri, and Texas

**Affiliations:**

Telecommunications Association Mid-South Electrical Industry Association

---

Casper is a Mechanical Engineer who joined SSR in 2011 with more than a decade of experience in the engineering industry. He currently serves as a lead technical resource and department manager.



2650 Thousand Oaks Blvd., Suite 3200  
 Memphis, TN 38118

**Relevant Experience:**

- Lowndes County Juvenile Detention Center • Columbus, MS
- Tennessee Department of Corrections • Various Locations, TN
  - High Mast Lighting Phase I
  - High Mast Lighting Phase II
- Riverbend Maximum Security Institute • Nashville, TN
  - Underground Loop Replacement
- Trousdale County Correctional Facility • Trousdale, TN
- Tennessee Bureau of Investigation Forensic Lab • Memphis, TN
- Lafayette County Chancery Courthouse • Oxford, MS
- Lauderdale County Justice Center • Ripley, TN
- Mississippi County Law Enforcement Center • Mississippi Co, AR
- Mississippi County Law Enforcement Center • Luxora, AR
- Shelby County Government • Memphis, TN
  - Shelby County Court House Historical Renovation
  - Shelby County Criminal Justice Center
  - Fire Station No. 68
  - Firing Range
- Shelby County Sheriff's Department • Memphis, TN
  - Shelby County Sheriff's Substation
- City of Collierville • Collierville, TN
  - Collierville Justice Center
- City of Germantown • Germantown, TN
  - Fire Station No. 4 LEED Silver®
  - Fire Station No. 3 Kitchen Renovation
- City of Memphis • Memphis, TN
  - Design Standards Handbook
  - Beale Street Landing
  - County Health Department
  - Police Academy Training Center
  - City of Memphis Schools ADA Upgrades & Improvements



**Scott Barry, CPD, LEED AP, Principal  
Certified Plumbing Designer**



**Role on this project:**  
Plumbing Designer  
Fire Protection Designer

**Education:**  
Associate of Arts, Architectural Engineering Technology,  
State Technical Institute at Memphis

**Certifications:**  
LEED AP  
Certified in Plumbing Design (CPD)

**Affiliations:**  
Society of American Military Engineers  
American Society of Plumbing Engineers  
The American Institute of Architects

Scott is a Senior Principal at SSR. His experience includes over 20 years of project management on multi-disciplined projects. Scott has extensive experience in design of plumbing systems and fire protection systems and he is experienced in special waste systems such as acid waste and process waste, as well as special distribution systems including medical gas.



2650 Thousand Oaks Blvd., Suite 3200  
Memphis, TN 38118

**Relevant Experience:**

- Desoto County Juvenile Justice Center • Desoto County, MS
- Lee County Juvenile Detention Facility • Tupelo, MS
- Walnut Grove Juvenile Correction Facilities • Walnut Grove, MS
- Lowndes County Juvenile Detention Facility • Columbus, MS
- Northeast Indiana Youth Village • Warsaw, IN
- Lauderdale County Justice Center • Ripley, TN
- Tallahatchie Count Correctional Center Addition • Tutwiler, MS
- Wilkinson County Correctional Center • Woodville, MS
- East Mississippi Correctional Facility • Meridian, MS
- Blackwater Correctional Facility • Milton, FL
- Trousdale County Correctional Facility • Trousdale County, FL
- Decatur County Correctional Facility • Decatur County, TN
- Bay County Jail Annex • Panama City, FL
- Robertson County Correctional Facility • Springfield, TN
- Shelby County Criminal Justice Center • Memphis, TN
- Logan County Jail • Logan County, OK
- Saline County Jail • Saline County, AR
- Memphis Police Department, Southeast Precinct • City of Memphis, TN
- Lawrence County Jail • Lawrence County, TN
- White County Correctional Facility • White County, AR
- Webb County Correctional Center • Laredo, TX
- Mississippi County Law Enforcement Center • Luxora, AR
- Tennessee Bureau of Investigation • Memphis, TN
  - Regional Consolidated Laboratory
- Tennessee Air National Guard (164th Air Wing) • Memphis, TN
  - Base Civil Engineering Building
  - Flight Simulator
- U.S. Army Corps of Engineers • Afghanistan
  - Camp Zafar Combat Support Battalion
  - Recruit Collection Points
  - ANA Regional Police Training Center Kandahar
  - Delaram Solid Waste Management Complex
- Shelby County Government • Memphis, TN
  - Fleet Management Site Relocation
  - Vehicle Inspection Station
  - Criminal Justice Center
- City of Memphis • Memphis, TN
  - City Schools ADA Upgrades/Improvements
  - Southeast Police Precinct Tactical Unit
  - Vehicle Maintenance Building Upgrades
  - Fuel Tank Estimates
  - Liberty Bowl Gate 4 Improvements

**Christina Sirimoungkhons**  
**Plumbing / Fire Protection Designer**



**Role on this project:**  
 Plumbing / Fire Protection Designer

**Education:**  
 Associate of Arts / Commercial Drafting /  
 Tennessee Technological Center / 1989

**Affiliations:**  
 American Society of Plumbing Engineers

Ting has extensive plumbing and fire protection drafting experience on a wide variety of projects. During her years of drafting and design, she has served public and private clients including City of Memphis, Shelby County Government, Tennessee Department of Transportation, U.S. Navy, Tennessee Air National Guard, Memphis Zoo, Memphis Housing Authority, Federal Express, and Block Drug.



2650 Thousand Oaks Blvd., Suite 3200  
 Memphis, TN 38118

**Relevant Experience:**

- DeSoto County • Hernando, MS
  - Desoto County Jail
  - Juvenile Detention Center
- Tallahatchie County Correctional Facility • Tutwiler, MS
- Wilkinson County Correctional Facility • Wilkinson County, MS
- Hardeman County Justice Center • Hardeman, MS
- Bay County Jail Annex • Panama City, FL
- Bay County Correctional Facility • Bay County, FL
  - Medical Area
- Blackwater River Correctional Facility • Milton, FL
- Houston Institutional Facility • Houston, TX
- Lawrence County Jail • Lawrenceberg, TN
- Logan County Jail Renovations • Logan County, OK
- Mississippi County Law Enforcement Center • Luxora, AR
- TDOC Mark Luttrell Correctional Complex • Memphis, TN
  - Renovations
- Noble County Jail • Noble County, OK
- Northeast Indiana Youth Village Correctional Facility • Warsaw, IN
- TDOC Northwest Correctional Complex • Tiptonville, TN
  - Infrastructure Upgrades
- Trousdale County Jail • Trousdale, TN
- Robertson County Jail • Springfield, TN
  - Courtyard
  - Master Control Revisions
- Saline County Detention Facility • Benton, AR
- Shelby County Government • Memphis, TN
  - Criminal Justice Center - Expansion
  - Adult Offender Center (Women's Building)
  - Archives Building
  - Shelby County Sheriff's Department - Narcotics Building
- West Tennessee Penitentiary • Henning, TN
  - Minimum Security Addition
- White County Correctional Facility • Searcy, AR



**Dax Alexander, PE, President**



**Role on this project:**  
Civil Engineer

**Education:**

Bachelor of Science / Civil Engineering / 1994  
Mississippi State University

**Specialty Licenses:**

Mississippi (PE #14208) / 1999  
Louisiana (PE #37088) / 2012  
Alabama (PE #32625) / 2012

As a Project Engineer, Mr. Alexander has over 24 years of experience in road improvements, private site plan design, drainage and stormwater detention design, utility design, municipal drainage projects, road corridor studies, drainage studies, and water system analysis.

He has led the planning, engineering and permitting stages of numerous private development projects including residential and commercial subdivisions, retail developments and multi-family housing.

As President of the firm, Mr. Alexander is directly involved with daily operations of the company, its personnel and various projects. He strives to stay on the forefront of innovation and technology that helps clients meet their goals more effectively.

As a lifelong resident of South Mississippi, he offers great familiarity with the area as well as state and federal regulatory requirements for engineering projects. He is directly involved with professional, community and civic organizations on the Mississippi Gulf Coast.



401 Cowan Road, Suite A  
Gulfport, MS 39507

**Relevant Experience:**

**Water and Sewer Improvements for the Learning and Wellness Commons at Tradition**  
Harrison County Board of Supervisors  
Gulfport, Mississippi

**MGCCC Nursing School and Simulation Center at Tradition**  
MGCCC / EGH  
Gulfport, Mississippi

**Pharmacy School at Tradition**  
William Carey University / EGH  
Gulfport, Mississippi

**Operations Center**  
Mississippi Power Company /EGH  
Harrison County, Mississippi

**St. Patrick High School (Civil/Site)**  
Catholic Diocese of Biloxi / EGH  
Biloxi, Mississippi

**MGM Park (Civil/Site)**  
City of Biloxi  
Biloxi, Mississippi

- Jones Park Improvements (City of Gulfport)
- Gulfport Downtown Streetscape Improvements Project (City of Gulfport)
- Harrison County Utility Authority Master Plan (in progress)
- Hurricane Isaac Sand Beach Restoration Project (Hancock County Board of Supervisors)
- Sand Beach Consulting & Studies (Harrison County Board of Supervisors)
- Forrest Avenue Boat Launch Improvements (City of Biloxi)
- Beachfront Promenade (City of Pascagoula)
- Water Well Rehabilitation Project (City of Biloxi)
- West Harrison County Regional Water Supply System (3 Water Wells, 3 Elevated Tanks, & 21 miles of Water Mains) (CDBG W13 – Harrison County Utility Authority)
- North Orange Grove Gravity Sewer Interceptor/Force Main/Pump Station Projects (City of Gulfport)
- Green Meadow & Drinkwater Road Improvements Project (City of Bay St. Louis)



**Benjamin Smith, PE**  
**Project Engineer /Vice-President**



**Role on this project:**  
 Civil Engineer

**Education:**  
 Bachelor of Science / 2002 / Civil Engineering  
 Mississippi State University

**Specialty Licenses:**  
 1986 / Mississippi / Registered Professional  
 Engineer / PE# 18333

Mr. Smith is an experienced project engineer with several years' experience in road improvements, traffic analysis, private site development, drainage and stormwater detention design, water, sewer and utility design, and municipal drainage projects.

He has been involved in the planning, engineering and permitting stages of numerous private development projects including residential and commercial subdivisions and retail developments. Mr. Smith has vast experience in the civil site design of new facilities, as well as extensive renovation projects for pathways, piers, roads and drainage for both private and government projects.

As Vice-President and lead project engineer in our Biloxi and Pascagoula offices, he offers extensive management and engineering skills to any project.

**bma** BROWN, MITCHELL  
 & ALEXANDER, INC.  
 CONSULTING ENGINEERS



796 Vieux Marche, 2nd Floor  
 Biloxi, MS 39530

**Relevant Experience:**

**Water and Sewer Improvements for the Learning and Wellness Commons at Tradition**  
 Harrison County Board of Supervisors  
 Gulfport, Mississippi

**Road Project, Phase 1, for Learning and Wellness Commons at Tradition**  
 Gulfport, Mississippi

**MGCCC Nursing School and Simulation Center at Tradition**  
 MGCCC / EGH  
 Gulfport, Mississippi

**Pharmacy School at Tradition**  
 William Carey University / EGH  
 Gulfport, Mississippi

**Operations Center**  
 Mississippi Power Company /EGH  
 Harrison County, Mississippi

**Bienville Orthopedic Medical Complex**  
 Bienville Orthopedic Specialists  
 Gautier, Mississippi

**St. Patrick High School (Civil/Site)**  
 Catholic Diocese of Biloxi / EGH  
 Biloxi, Mississippi

**Ocean Springs High School (Civil/Site)**  
 Ocean Springs School District  
 Ocean Springs, Mississippi

**MGM Park (Civil/Site)**  
 City of Biloxi  
 Biloxi, Mississippi

**Keesler Gate Project No. 996**  
 City of Biloxi  
 Biloxi, Mississippi



**Nick Gant, PE**  
Project Engineer



**Role on this project:**  
Civil Engineer

**Education:**

Bachelor of Science / Civil Engineering / 2009 /  
University of Alabama

**Specialty Licenses:**

2014 / Engineer /Alabama # 34883  
2015 / Engineer /Mississippi # 26307

**Credentials:**

Zoning and Adjustment Board member – City of Ocean  
Springs, (2015 - present)

---

Mr. Gant is a Project Engineer with several years' experience with water, sewer and roadway infrastructure repairs, as well as site planning for large scale residential, commercial and recreational projects.

His experience includes a wide range of projects for both private and municipal sectors. Previous job experience includes project inspection, shipbuilding facilities engineer, and construction project management.

Mr. Gant joined the BMA team in 2017 as a project engineer and works out of our Biloxi, MS office. He is licensed in both Mississippi and Alabama.



796 Vieux Marche, 2nd Floor  
Biloxi, MS 39530

**Relevant Experience:**

**Saltgrass Steakhouse (Biloxi)**

Landry's, Inc.  
Biloxi, Mississippi

**Ship Island Ferry Terminal**

City of Gulfport /EGH  
Gulfport, Mississippi

**Florence Gardens**

Florence Gardens, LLC  
Gulfport, Mississippi

Prior to employment with BMA:

**East Side High School**

Montgomery, Alabama

**Foley Square**

Commercial Development  
Foley, Alabama

**Dongwon Autopart Expansion**

Dongwon Autopart Technology, LLC  
Luverne, Alabama

**Newk's Eatery (Airport Road)**

Newk's Franchise, LLC  
Mobile, Alabama

**New Park Apartments, Phase II**

The Park Apartment Homes  
Prattville, Alabama

**Ann Street – Road and Drainage Rehabilitation**

City of Mobile  
Mobile, Alabama

**Mark Otto, PS**  
**Professional Land Surveyor**



**Role on this project:**  
Surveyor

**Education:**  
Bachelor of Science / 1993 / Geography  
University of South Alabama

**Specialty Licenses:**  
2002 / Surveyor /Mississippi # 2868

**Credentials:**  
Southern District Director: Mississippi Association of Professional Surveyors (2014 – Present)

Mr. Otto is a Professional Land Surveyor with experience in land and marine surveying. He has performed a wide variety of surveys including boundary and topographic surveys, construction layout, flood insurance elevations, tree surveys, and hydrographic surveys. He is familiar with title and deed information as well as the preparation of easements.

As the Survey Manager, Mr. Otto coordinates the survey crews and associated surveying tasks for design projects. He is very knowledgeable of the three coastal counties and land development procedures relative to surveying. He is a FAA-licensed drone pilot, and is able to conduct detailed aerial surveys over large, hazardous, or inaccessible areas.



401 Cowan Road, Suite A  
Gulfport, MS 39507

**Relevant Experience:**

**Tradition Development**

Topo and Boundary/ALTA Surveys  
Tradition Community Development Corp  
Gulfport, Mississippi

**Harrison County Sand Beach Renourishment Harrison County Board of Supervisors**  
Harrison County, Mississippi

**Water & Sewer Improvements for the Learning & Wellness Commons at Tradition**  
Topographic Survey and Easement Exhibit  
Harrison County Board of Supervisors  
Gulfport, Mississippi

**Road Project, Phase 1, for Learning and Wellness Commons at Tradition**  
Topographic Survey & Subdivision Plat  
A. Garner Russell & Associates  
Gulfport, Mississippi

**MGCCC Nursing School and Simulation Center Topo and Boundary Surveys**  
MGCCC / EGH  
Gulfport, Mississippi

**Florence Gardens**  
Topo and Boundary/ALTA Surveys  
Florence Gardens, LLC  
Gulfport, Mississippi

**Flat Branch Gravity Sewer Interceptor**  
Topo and Boundary Surveys  
Harrison County Utility Authority  
Harrison County, Mississippi

**Western Harrison County Regional Water Supply Project (HARCUA CDBG W13 Project)**  
Topo and Boundary Surveys  
Harrison County Utility Authority  
Harrison County, Mississippi





**Karen Corban, RD, MA**  
**Foodservice Design Consultant, Registered Dietician**



**Role on this project:**  
 Foodservice Design Consultant

**Education:**  
 Master of Arts / Liberal Arts w/ emphasis on Foods & Nutrition / University of Mississippi

Bachelor of Science / Home Economics, vocational Education w/ emphasis on Quality Food Production / University of Mississippi

**Credentials:**  
 RD / Registered Dietician / 1977

Karen is a registered dietitian with a Master's Degree from the University of Mississippi in Foods and Nutrition and has twenty-five years of facility management experience. She served at the North Mississippi Regional Center as Clinical Dietitian, as Director of Nutrition Services and Director of Child Nutrition at Lafayette School District and Oxford City School District. Karen spent 21 years in food service management, involved in the complete renovation of five school food service facilities, renovation of the North Mississippi Center's facility, and the construction of a new special diets kitchen. The Mississippi State Director of Mental Health appointed Karen to be the State Special Assistant to the Foodservice Design Consultant during the design and construction of the North Mississippi State Hospital. Years 2001 to 2011, Karen served as consultant to the National Food Service Management Institute and traveled the U.S. teaching Designing School Kitchens and Feeding the School Child with Special Needs. Karen also served as President of the School of Applied Sciences Alumni Advisory Board for the University of Mississippi in 2008. From 2005 to 2009, Karen served as an adjunct professor in the Family and Consumer Science Department of the University of Mississippi.



COMMERCIAL FOODSERVICE DESIGN CONSULTANTS

113 Cedar Hill Drive  
 P. O. Box 441  
 Oxford, MS 38655

She currently (2017) serves as a member of the Alumni Advisory Board for the Department of Nutrition and Hospitality Management and the Buildings, Grounds and Renovation Committee for the University of Mississippi. Additional past experience includes performing contractual work for the Mississippi State Health Department determining the nutritional value of correctional facility meals.

**Relevant Experience:**

**Concordia Parish Correctional Institute**  
 Concordia Parish, LA  
 Contact: Sheriff Randy Maxwell  
 Phone: 318-336-5231

**Dixon Correctional Institute (2000 Inmate Facility)**  
 Contact: Grace & Hebert Architects  
 Mr. Adam Fishbein, AIA  
 Phone: 225-338-5569

**Jackson County Detention Center**  
 Jackson County, MS  
 Contact: Pryor & Morrow Architects  
 Mr. Chris Morrow, AIA  
 Phone: 662-327-8990

**Grant Parish Detention Center**  
 Grant Parish, LA  
 Contact: Pan American Engineers  
 Phone: 318-473-2100

**Louisiana Department of Public Safety**  
 New Trustee Compound  
 Baton Rouge, LA  
 Contact: WHLC Architecture  
 Mr. Rick Lipscomb, AIA  
 Phone: 225-767-1530

**Bill Murray, Senior Associate Member of FSCI  
Foodservice Design Consultant**



**Role on this project:**

Foodservice Design Consultant

**Education:**

College studies in Mechanical Drawing / LA Tech University / 1968-1970

Business Management / University of Southern Mississippi / 1971-1972

**Credentials:**

FSCI / Food Service Consultants International / 2005

Bill's experience includes twenty-seven years as a partner in a food service equipment and supply dealership. His knowledge of drafting and computer Aided Design (AutoCAD) allowed him to serve as designer and project manager for most new projects and renovations in which the dealership was involved. He has attended equipment shows, product seminars, and visited foodservice equipment factories throughout the United States since 1971. Bill now has more than 18 years as an independent consultant whose services have been contracted by architects and project owners for new hospitals and hospital renovations, correctional facilities, schools and colleges, culinary schools, restaurants, convenience stores, convention center, and other institutional food service facilities.



COMMERCIAL FOODSERVICE DESIGN CONSULTANTS

200 North Oak  
P. O. Box 911  
Vidalia, LA 71373

**Relevant Experience:**

**Concordia Parish Correctional Institute**

Concordia Parish, LA  
Contact: Sheriff Randy Maxwell  
Phone: 318-336-5231

**Dixon Correctional Institute (2000 Inmate Facility)**

Contact: Grace & Hebert Architects  
Mr. Adam Fishbein, AIA  
Phone: 225-338-5569

**Jackson County Detention Center**

Jackson County, MS  
Contact: Pryor & Morrow Architects  
Mr. Chris Morrow, AIA  
Phone: 662-327-8990

**Grant Parish Detention Center**

Grant Parish, LA  
Contact: Pan American Engineers  
Phone: 318-473-2100

**Louisiana Department of Public Safety**

New Trustee Compound  
Baton Rouge, LA  
Contact: WHLC Architecture  
Mr. Rick Lipscomb, AIA  
Phone: 225-767-1530



**Christian Preus, ASLA**  
Landscape Architect



**Role on this project:**  
Landscape Architect

**Education:**

Bachelor of Landscape Architecture / 2002  
Mississippi State University

**Specialty Licenses:**

Mississippi / Landscape Architect / #467  
Alabama / Landscape Architect / #766  
Louisiana / Landscape Architect / #P-237

Christian Preus will serve as the principal landscape architect for this project, leading conceptual site design and overseeing landscape construction. Mr. Preus has master planned and designed some of the premier projects in the State of Mississippi. The Mississippi Chapter of the American Society of Landscape Architects, the Mississippi Municipal League, Mississippi State University, and The Sun Herald have acknowledged his work for planning, design, and environmental awards. His areas of expertise include land planning, site design, and landscape architecture.

Preus is a licensed landscape architect in the States of Alabama, Mississippi, and Louisiana, the former President of the Mississippi Chapter of the American Society of Landscape Architects, the Design Chairman for Gulfport Main Street, and a 2013 Graduate of the Leadership Gulf Coast program.

**CHRISTIANPREUS**  
landscape Architecture

1101 Desoto Street  
Ocean Springs, MS 39501

**Relevant Experience:**

**Harrison County Waste Water Facility, Gulfport, MS**

Landscape Architectural design, bidding, and project management services for the landscape improvements on the campus of the waste water plant.

**Port of Gulfport, Gulfport, MS**

Design and planning services to redefine the perimeter of the Port campus.

**GRAMMY Museum, Cleveland, MS**

Site design services for the museum dealing with use, aesthetic, and function with an emphasis on hardscape and landscape design.

**Florence Gardens, Gulfport, MS**

Master planning services for the traditional neighborhood Master Plan and construction design and phasing.

**Dudy Noble Field, Starkville, MS**

Site design and landscape architectural services for the renovations of the new baseball stadium on the campus of Mississippi State University.

**MGM Minor League Ballpark, Biloxi, MS**

Site design services for the minor league baseball stadium. Design of plazas, greenspaces, and pedestrian circulation, along with landscape and irrigation design.

**Mississippi Aquarium, Gulfport, MS**

Site and landscape design for the new state of the art aquarium to be built on the Mississippi Gulf Coast.

**Light House Park, Pascagoula, MS**

Programming, schematic design, and construction administration services for an award winning park near the mouth of the Pascagoula River.

**Downtown Streetscape, Ocean Springs, MS**

Landscape Architectural services for 4.5 million dollar streetscape project in Downtown Ocean Springs.

# ELEY GUILD HARDY ARCHITECTS



Jim Eley, David Hardy, Taylor Guild

## INTRODUCTION

In 2008, Guild Hardy Architects merged with Eley Associates / Architects of Jackson to create one of the largest architectural and interior design firms in the State of Mississippi. Now known as Eley Guild Hardy Architects, the firm was founded in 1953 on the principle of providing comprehensive professional services and excellent design. EGH continues this tradition today with a highly skilled and talented team of professionals including architects and interior designers that provide innovative design solutions to satisfy our clients' needs.

Our design philosophy is that good design transcends style and that substance is more important than trend. This is evident in the wide variety of projects which have been recognized for awards of excellence by the American Institute of Architects, the American Society of Interior Designers, Naval Facilities Engineering Command (NAVFAC) as well as many other construction industry organizations.

As a member of the U.S. Green Building Council, we realize the importance of sustainable design. Our commitment is evident in the design of our Biloxi office which is LEED Certified, and the historic renovation of our Jackson office which is LEED Gold. Over the last half-century, EGH has become one of the largest and most respected architecture firms in Mississippi. The Firm specializes in architecture, master planning, programming for administrative facilities, operational, institutional, religious and municipal facilities, as well as historical restoration and Department of Defense projects.



biloxi



jackson

## PRINCIPALS

James H. Eley, FAIA  
 W. Taylor Guild, III, AIA  
 David J. Hardy, AIA  
 Stephen A. Stojcich, AIA  
 Joseph B. Crain, AIA  
 Mark E. Lishen, AIA, LEED AP  
 J. Heath Perry, AIA

## 2.A

### Eley Guild Hardy experience

**Eley Guild Hardy's** architects, interior designers, and consultants chosen for this project have extensive expertise in the design of institutional buildings and have the ability to coordinate the work of multiple design firms. The proposed Harrison County Juvenile Detention Center will require experience and expertise with not only technologically advanced detention facilities, but also in designing these types of buildings with the latest security features in mind.

The consultants chosen to participate on our team also bring tremendous expertise to the table having worked on other detention centers. Together, we have a knowledge of the Owner and User's needs, and a record of construction cost containment. The proposed Eley Guild Hardy team has all of these attributes, as well as a track record of successful projects similar to the proposed Juvenile Detention Center project.



**Stephen Stocjich, AIA  
Principal**

Project Designer  
Architect, State of Mississippi #2884  
26 Years of Experience



**Heath Perry, AIA, CSI, CDT  
Principal**

Specifications / Cost Estimating  
Architect, State of Mississippi #4460  
19 Years of Experience



**Kyle Kish, AIA, LEED AP, CDT  
Associate**

Project Architect  
Architect, State of Mississippi #4202  
15 Years of Experience



**Taylor Guild, III, AIA  
Principal**

Principal in Charge  
Architect, State of Mississippi #2218  
31 Years of Experience



**Patricia Agnew, ASID, LEED AP  
Interior Designer**

Interior Designer, NCIDO #14106  
30 Years of Experience



**Mark Lishen, AIA, LEED AP  
Principal**

Project Manager / Principal  
Architect  
Architect, State of Mississippi #2769  
34 Years of Experience



**Lee Palermo, AIA  
Construction Inspections**

Architect, State of Mississippi #4334  
26 Years of Experience





**Juvenile Special Treatment Facility**

*Harrison County, Mississippi*

Construction Value: \$9,036,000

Completion Date: 2001, continuous updates/renovations

This facility's design meets the licensing requirements for the Mississippi State Department of Mental Health as well as the special security needs of the residents. Many of the patients come from the juvenile justice system, their special needs mandated a secure facility while offering a therapeutic environment with an emphasis on rehabilitation, education and growth-oriented activities. The occupants reside in an eight-building complex consisting of an administration building, education building, a gymnasium and three living pods arranged around a central green space. Security is achieved with an arched perimeter fence allowing the patients to circulate freely within the buildings and grounds. A staff residence and warehouse facility are also provided.



**Robert J. Curry Public Safety Center**

*Gulfport, Mississippi*

Construction Value: \$24,330,000

Completion Date: 2010

Owner's Representative: Dr. John Kelly (228.868.5770)

Designed to meet FEMA 361 Guidelines, the combined Police Headquarters and Municipal Courts Building, a 70,624 square foot building in downtown Gulfport doubles as a First Responders' Shelter. The project meets the design guidelines of FEMA 361, Design and Construction Guidance for Community Shelters. The building program includes many diverse spaces including state-of-the-art courtrooms, holding cells, maintenance areas, administrative and support offices, an E911 dispatch area, judge's chambers, meeting rooms and an emergency operations center.



**Harrison County Adult Detention Center**

*Gulfport, Mississippi*

Eley Guild Hardy has designed and managed several projects for the Harrison County Adult Detention Center including:

- Re-Roofing Harrison County Adult Detention Center
- HVAC Upgrades
- Chaplain's Office



## 2.A

Eley Guild Hardy experience

### **Harrison County Justice Court 2nd Judicial District** *Biloxi, Mississippi*

Construction Value: \$1,400,000  
Completion Date: 2010  
Owner's Representative: Ms. Pam Ulrich, County Administrator (228.865.4116)

The 7,000 SF building, located next door to the Harrison County 2nd Judicial Courthouse in Biloxi, MS, was designed with the downtown fabric as the focus. The site design maximized green space with low walls that hide the parking and allows for the green space to be a buffer. The Justice Court Department manages a myriad of matters and this new location helps expedite initial court appearances.



### **Harrison County Justice Court Annex** *Gulfport, Mississippi*

Construction Value: \$6,400,000  
Completion Date: 2011  
Owner's Representative: Ms. Pam Ulrich, County Administrator (228.865.4116)

Located across from the Main Harrison County Court Building, this new court facility is an urban renewal project that replaces an aging auto repair shop on the western side of 24th Avenue. The two-story, 15,441 SF Court Annex Building houses trial and arraignment courts as well as the Civil and Criminal Clerks Offices for Harrison County. The building's design pulls cues from the civic character of some of the more traditional buildings in the area and compliments the aesthetics and scale of the neighboring buildings though its proportions, street presence and materials.



### **Harrison County Community Shelter** **FEMA 361 Shelters**

*Harrison County, Mississippi*

Construction Value: \$4,052,000 each  
Completion Date: 2010

The three Harrison County Evacuation Shelters are strategically placed throughout Harrison County. Each location is 14,300 square feet and has the capacity to shelter 1,000 occupants. Each location has its own waste water treatment plant, water well and a generator. The buildings are architectural precast concrete wall panels with concrete double T roof construction. Each building is designed to withstand 200 mph winds and meet the requirements for a FEMA 361 Evacuation Shelter.





### **Carol Gartin Justice Building**

*State of Mississippi  
Jackson, Mississippi*

Construction Cost: \$37,000,000

Completion Date: 2006

Owner's Representative: Hon. William L. Waller, Jr.,  
Chief Justice (601.359.2139)

The program was to replace the existing justice building with a new 162,000 SF Supreme Court facility to consolidate all divisions of the third branch of government. The four-story, blast-resistant building incorporates Indiana limestone under a copper roof. Its neo-classical style reflects the adjacent 1903 Capitol. The basilica form recalls the Roman courts with an apse housing the seat of justice. The rusticated base, two-story wall, attic story and columns match the scale of the Capitol.

## **Eley Guild Hardy Architects - Relevant Military Project Experience**

EGH Architects has designed Department of Defense projects throughout the Southeastern United States totalling over \$600,000,000.00. Many of these projects included varying aspects of security from perimeter fencing to hardened anti-terrorism construction. In addition to the requirements of Unified Facility Criteria 4-010-01 DoD Minimum Antiterrorism Standards for Buildings, we are extremely familiar with the requirements of AR380-5 Department of the Army Information Security Program; AR 190-51 Security of Unclassified Army Property (Sensitive and Nonsensitive) and AR 190-11 Physical Security of Arms, Ammunition and Explosives. These requirements have dictated the use of security mesh in the exterior building envelope (walls and roof), as well as security mesh over the exterior windows. Incorporating the requirements of DCID 6/9 – Physical Security Standards for Sensitive Compartmented Information Facilities for building envelopes along with Intrusion Detection Systems (IDS) into most of these facilities provides EGH a unique insight into the requirements for the Harrison County Juvenile Detention Center.

### **National Center for Critical Information, Processing and Storage - Stennis Space Center**

The exterior perimeter of the buildings were enhanced and upgraded to meet SCIF requirements and aesthetic considerations. This project established and expanded a secure 50,000sf facility capable of hosting, storing, managing, and distributing Critical Infrastructure Information (CII).

### **Air Force Central Command Headquarters - Shaw AFB, South Carolina**

The building is a secure facility requiring access control at all entry points and alarms at all exit points. Exterior service doors are equipped with door monitoring. Various security levels are identified throughout the building, and interior and perimeter construction complied with referenced standards for each security level. Intrusion detection systems were required for some areas of the building.

### **Air Force Office of Investigative Services (Locker House) - Keesler Air Force Base, Biloxi**

Renovations to Locker House consisted on the conversion of a run-down three-story dormitory building into secure offices for the Office of Special Investigative Division for the Air Force. Modifications to the existing building included the conversion of existing dormitory bedrooms into secure private offices, finished with new acoustical ceiling tile and carpet flooring. Existing concrete block partition walls were refinished with gypsum board to provide for more attractive spaces.





All of the consultants chosen for our team have extensive expertise in the design of detention/corrections buildings and have the ability to work in a team environment. The proposed Harrison County Juvenile Detention Center will require experience and expertise with not only technologically advanced detention facilities, but also in designing these types of buildings with the latest security features in mind.

**EVANS TAYLOR FOSTER CHILDRESS ARCHITECTS, P.C.**

**Detention Center Consultants**

Rusty Foster, AIA  
Michael Childress, AIA  
R. Ladd Garey, AIA  
343 North Main Street  
Memphis, TN 38103

**R&N Systems Design**

**Security Electronics**

**Detention System Equipment**

Chris Nielsen, PE, Principal  
615 Oakleaf Office Lane  
Memphis, TN 38117

**SMITH SECKMAN REID, INC.**

**Structural Engineering**

**Mechanical Engineering**

**Electrical Engineering**

**Fire Protection**

Scott Barry, CPD, LEED AP  
2650 Thousand Oaks Blvd, Suite 3200  
Memphis, TN 38118

**BROWN, MITCHELL & ALEXANDER, INC**

**Civil Engineering and Surveying**

Dax Alexander, PE - Civil Engineer  
401 Cowan Road, Suite A  
Gulfport, MS 39507

**Murray Corban**

**Food Service Design Consultant**

Karen Corban  
P. O. Box 441  
113 Cedar Hill Drive  
Oxford, MS 38655

**CPIA, PLLC**

**Landscape Architecture**

Christian Preus, ASLA - Landscape Architect  
1011 Desoto Street  
Ocean Springs, MS 39564

**Address:**

343 North Main Street  
 Memphis, TN 38103  
 Ph: 901.525.5344  
 Fax: 901.525.5420  
 www.etfc-arch.com

**Principals:**

Rusty Foster, AIA  
 Michael Childress, AIA  
 R. Ladd Garey, AIA

**Company Overview:**

ETFC Architects is an architecture, planning and interior design firm that traces its origins back to our predecessor firm Mahan and Broadwell Architects established in 1912. In 2003, we evolved to continue our collaboration and form the current legacy for ETFC Architects. We pride ourselves by being one of the oldest continuously operating architectural firms in the Southeast Region of the United States that has consistently produced distinguished architectural design for over 105 years. Included among the firm's landmark buildings designed by the firm are the Shelby County Justice Center, St. Francis Hospital Medical Center, the C & I Bank Building, the Plough Administrative and Research Center, the State of Tennessee and the Shelby County Office Buildings and various projects for St. Jude Children's Research Hospital. Historically, our practice has covered a broad range of project types for clients including Education, Health Care, Justice, Business, Government and Industry.

During the firm's long history, law enforcement, court, justice and correctional facilities have been an important part of our design practice. The firm has established a reputation as a specialist in the master planning and design of jails, prisons, courtrooms, justice centers, and juvenile facilities. Completed projects include: the DeSoto County Jail, Hernando, MS; Hardeman County Criminal Justice Center, Bolivar, TN; the Shelby County Justice Center, Memphis, TN; West Tennessee High Security Prison, Lauderdale County, TN; Federal Correctional Institution, Memphis, TN; Mississippi County Justice Center, Luxora, AR; Shelby County Correctional Center, Memphis, TN and the INS Processing Center, Houston, TX.

The firm's approach to design begins with understanding the client's needs such as functional requirements, budget constraints, and goals for the image presented and secure environment created. Experienced and dedicated management is the key to a successful project. Every project at ETFC is led by an experienced Project Principal who is accountable to the client from initial programming through final completion. This Principal is the client's basic point of contact and is available on a daily basis. The Project Principal is responsible for ensuring quality design, that budgets and schedules are met, that regulatory requirements are satisfied, and that technical excellence in construction is achieved.

We consider the delivery of quality service, personal attention to our clients, and the pursuit of excellence to be the most rewarding aspects of our practice. A successful project is one resulting in our client's satisfaction while maintaining the firm's values of honesty, fairness, productiveness, professionalism and quality architecture. The success of our approach is evidenced by the many client relationships, which continue over the years.

ETFC Architects is headed by three principals; all are registered architects with an average of 29 years' experience. They are supported by a staff of experienced professionals who provide project management, programming, architectural and interior design, CAD documentation, specifications, estimating, and construction administration. With a combined architectural and interior design staff of over 15 persons, we have the available personnel to provide manpower as required to complete your project in a timely manner. Our firm's current workload is moderate and will not interfere with any responsible schedule to be determined for the project. ETFC Architects is a duly Registered Corporation in the State of Mississippi.

The experience of ETFC Architects in the field of justice is demonstrated by the impressive amount of completed projects representing a variety of Federal, State, County and Municipal Clients. This extensive experience gives us an appreciation of the concerns with security, lighting and mechanical systems, and the importance of economical and low-maintenance construction. See our Representative Justice Projects list for project listings.





**Address:**

343 North Main Street  
 Memphis, TN 38103  
 Ph: 901.525.5344  
 Fax: 901.525.5420  
 www.etfc-arch.com

**Principals:**

Rusty Foster, AIA  
 Michael Childress, AIA  
 R. Ladd Garey, AIA

**RECENT PROJECT CASE STUDIES:**

- A. Renovations to the Shelby County Justice Center, Memphis, Tennessee**  
 Sheriff's Offices, District Attorney's Offices, Public Defender's Office, 8 General Sessions Courtrooms, 3 Municipal Courtrooms, 10 Criminal Courtrooms, 2 Environmental Courtrooms, Grand Jury, Judicial Commission, 911/Dispatch, Pretrial Services, General Sessions Court Clerk, Criminal Court Clerk, Municipal Court Clerk and Judge's Offices  
 Size: 450,000 SF Cost: \$80,000,000 C/SF: \$177.78  
 Owner: Name: Shelby County Government – Harvey Kennedy, CFO  
 Address: 160 N. Main Street, Memphis, TN 38103 Ph: (901) 222-2050
- B. Jackson County Justice Center, Newport, Arkansas**  
 Sheriff's Offices, 100 Bed, Male/Female Housing, Hearing Room, Video Visitation, Food Service, Sallyport  
 Size: 38,000 SF Cost: \$8,891,611 C/SF: \$233.99  
 Owner: Name: Jackson County Arkansas – Judge Jeff Phillips  
 Address: 208 Main Street, Newport, AR 72112 Ph: (870) 523-7400  
 Contractor: Name: Tate General Contractors  
 Address: 115 Woody Lane, Jonesboro, AR 72401 Ph: (870) 935-3583
- C. DeSoto County Jail Expansion Phase II, Hernando, Mississippi**  
 Sheriff's Offices, 264 Bed, Male/Female Housing, Chapel, Multi-purpose Area Segregation  
 Size: Cost: \$12,900,000 C/SF: \$243.71  
 Owner: Name: DeSoto County Board of Supervisors –  
 Ms. Vanessa Lynchard, County Executive  
 Address: 365 Loshier Street, Suite 300, Hernando, MS 38632  
 Phone: (662) 429-1460  
 Contractor: Name: Murphy & Sons, Inc.  
 Address: 9148 Corporate Drive, Southaven, MS 38671 Ph: (662) 393-3130
- D. DeSoto County Jail Phase I, Hernando, Mississippi**  
 280 Bed, Male/Female Housing, Inmate Medical, Video Visitation & Arrangement, Enclosed Sallyport  
 Size: 65,225 SF Cost: \$16,000,000 C/SF: \$245.30  
 Owner: Name: DeSoto County Board of Supervisors –  
 Ms. Vanessa Lynchard, County Executive  
 Address: 365 Loshier Street, Suite 300, Hernando, MS 38632  
 Phone: (662) 429-1460  
 Contractor: Name: Flintco Construction  
 Address: 2179 Hillshire Circle, Memphis, TN 38133 Ph: (901) 372-9608
- E. Hardeman County Criminal Justice Center, Bolivar, Tennessee**  
 Sheriff's Offices, 176 Bed Male/Female Housing, Inmate Medical, Courtrooms, Food Service, Intake  
 Size: 72,100 SF Cost: \$16,500,000 C/SF: \$228.84  
 Owner: Name: Hardeman County – Mayor Willie Spencer  
 Address: P.O. Box 250, Bolivar, TN 38008 Ph: (731) 658-3266  
 Contractor: Name: Bell & Associates Construction – Elvis Butler, Sr. VP  
 Address: 255 Wilson Pike Circle, Brentwood, TN 37024 Ph: (615) 373-4343
- F. Mississippi County Justice Facility, Luxora, Arkansas**  
 Sheriff's Offices, Hearing Room and 266 Bed Male/Female Housing and 12 Bed Juvenile Unit, Enclosed Sallyport, Intake/Booking/Processing, Food Service, Inmate Medical, Laundry  
 Size: 85,000 SF Cost: \$12,050,000 C/SF: \$141.76  
 Owner: Name: Mississippi County Arkansas – Judge Randy Carney  
 Address: 200 W. Walnut Street, Room 204, Blytheville, AR 72315  
 Phone: (870) 763-3212  
 Contractor: Name: Carothers Construction – Ben Logan, President  
 Address: P.O. Box 189, Taylor, MS 38673 Ph: (662) 513-8820
- G. Tallahatchie County Correctional Center, Tutwiler, Mississippi**  
 1696 Bed Expansion, Male Housing, Food Service, Education Classroom/Votech, Inmate Medical  
 Size: 286,158 SF Cost: \$85,000,000 C/SF: \$297.03  
 Addition to Original 1084 Bed Facility completed by ETFC.  
 Owner: Name: Corrections Corporation of America –  
 Ms. Lucibeth Mayberry, Senior VP of Real Estate  
 Address: 10 Burton Hills Boulevard, Nashville, TN 37215 Ph: (615) 263-3000  
 Contractor: Name: Bell & Associates Construction – Elvis Butler, Sr. VP  
 Address: 255 Wilson Pike Circle, Brentwood, TN 37024 Ph: (615) 373-4343

**REPRESENTATIVE JUSTICE PROJECTS**

	<b>BEDS</b>	<b>CONSTRUCTION COST</b>
<b>COMPLETED JUVENILE FACILITIES</b>		
• DeSoto County Juvenile Facility, Hernando, MS	38	2,750,000
• Shelby County (TN) Training Center - Phases 1, 2, & 3 Juvenile Facility Prototype for CCA	200	11,940,000
• Mississippi County Juvenile Facility, Luxora, AR	150	6,051,000
• Tall Trees Juvenile Facility	12	480,000
• John Wilder Youth Correction Center, Somerville, TN	12	84,400
• Northwest Indiana Juvenile Facility, Warsaw, IN	192	18,841,700
	<u>200</u>	<u>16,985,000</u>
<b>CURRENT RELATED PROJECTS</b>		
• Renovations to the Shelby County Justice Center	n/a	80,000,000
• DeSoto County Jail Expansion Phase II, Hernando, MS	264	9,000,000
• DeSoto County Sheriff's Office, Hernando, MS	n/a	4,000,000
• Jackson County Jail, Newport, AR	100	8,900,000
• Northwest-Correctional Complex, Tiptonville, TN	n/a	750,000
• Turney Center Industrial Complex, Only, TN	n/a	1,250,000
• TDOC Statewide Upgrades	n/a	15,000,000
• Northwest Correctional Complex, Tiptonville, TN	n/a	7,000,000
• Mark Luttrell Correctional Complex, Memphis, TN	n/a	600,000
<b>COMPLETED LAW ENFORCEMENT FACILITIES</b>		
• DeSoto County Jail-Phase I, Hernando, MS	280	16,000,000
• Mississippi County Law Enforcement Center, Luxora, AR	266	12,050,000
• Hardeman County Criminal Justice Center, Bolivar, TN	176	16,500,000
• Bay County Courthouse Expansion, Panama City, FL	60	3,000,000
• Southeast Police Precinct, Memphis, TN	n/a	4,500,000
• TBI – Regional Consolidated Facility, Memphis, TN	n/a	2,890,000
• Bartlett Justice Center; Bartlett, TN	40	3,633,200
• Brig - Naval Air Station Memphis; Millington, TN	87	2,900,000
• Germantown Justice Center; Germantown, TN	24	1,209,000
• Henry County Law Enforcement Center, Paris, TN	178	8,062,500
• Lauderdale County Justice Center; Ripley, TN	124	4,592,850
• Shelby County Justice Center - Phase 1; Memphis, TN	1,208	113,905,000
• Shelby County Justice Center - Phase 2	150	17,060,000
• Tipton County Justice Center; Covington, TN	56	4,720,000
• Gamberi Military Base, Jalalabad, Afghanistan (Military Brig)	50	25,000,000
• Camp Zafar Military Base, Herot, Afghanistan (Military Brig)	50	25,000,000
<b>COMPLETED PRISON FACILITIES</b>		
• Bay County Jail Annex, Bay County, FL	688	42,000,000
• Tallahatchie County Correctional Center & Jail, Tutwiler, MS	1,084	37,195,200
• Tallahatchie County Correctional Center Expansion	1696	85,000,000
• Shelby County Correction Center, Memphis, TN	512	12,800,000
• INS Processing Center, Houston, TX	1,000	23,500,000
• Federal Correctional Institution, Memphis	60	4,240,000
• Federal Correctional Institution, Memphis	300	10,285,000
• Hardeman County Correction Center, Whiteville, TN	2,048	61,454,000
• Lee Adjustment Center Addition, Beatyville, KY	256	9,137,500
• Marion Adjustment Center Addition, St. Mary KY	256	9,406,200
• Otter Creek Correctional Center, Wheelwright, KY	256	7,654,000
• Shelby County (TN) Corrections Center Expansion	576	23,500,000
• Shelby County (TN) Correction Center - Phase 1,2,3, & 4	2,408	47,070,500
• Shelby County Pre-Trial Detention Center, Memphis	384	9,076,000
• Silverdale Correction Center Addition, Chattanooga, TN	128	4,396,600
• Webb County Correctional Center, Laredo, TX	512	15,750,000
• Webb County Correctional Center Expansion, Laredo, TX	1000	65,000,000
• West Tennessee High Security Prison, Lauderdale County, TN	640	38,725,000
• West Tennessee Medium Security Prison	1,524	47,185,000
• Whiteville Correction Center, Whiteville, TN	1,536	45,220,000
• Wilkinson County Correction Center, Wilkinson, MS	1,024	30,954,600
	<b>TOTAL</b>	
	21,805	\$ 1,074,205,250

**Address:**

343 North Main Street  
 Memphis, TN 38103  
 Ph: 901.525.5344  
 Fax: 901.525.5420  
 www.etfc-arch.com

**Principals:**

Rusty Foster, AIA  
 Michael Childress, AIA  
 R. Ladd Garey, AIA

**REFERENCES:****Mr. Harvey Kennedy**

Shelby County Chief Administrative Officer  
 160 N. Main Street, Suite 1122  
 Memphis, Tennessee 38103  
 (901) 222-2050

**Mr. Thomas Needham, PE**

Shelby County Public Works Director  
 160 N. Main Street, Suite 1127  
 Memphis, Tennessee 38103  
 (901) 222-2036

**Mr. Bill Dudley, PE**

Deputy Director  
 St. Jude Children's Research Hospital  
 262 Danny Thomas Place  
 Memphis, Tennessee 38105  
 (901) 595-3959

**Ms. Vanessa Lynchard**

DeSoto County Administrator  
 365 Loshier Street, Suite 300  
 Hernando, Mississippi 38632  
 (662) 469-2180

**Mr. Anthony Nowak**

DeSoto County Attorney  
 Smith, Phillips, Mitchell, Scott and Nowak, LLP  
 2545 Coffey Street, P.O. Box 346  
 Hernando, Mississippi 38632  
 (662) 429-7888

**Sheriff Bill Rasco**

DeSoto County Sheriff  
 311 W. South Street  
 Hernando, Mississippi 38632  
 (662) 469-8027

**Judge Jeff Phillips**

Jackson County Arkansas  
 208 Main Street  
 Newport, Arkansas 72112  
 (870) 523-7400

**Sheriff David Lucas**

Jackson County Sheriff  
 617 Second Street  
 Newport, Arkansas 72112  
 (870) 523-5842

**Mr. Richard Allen**

Jackson County Attorney  
 208 Main Street  
 Newport, Arkansas 72112  
 (870) 512-8456

**Judge Chip Cary**

Hardeman County, Tennessee  
 Denton and Cary Attorneys at Law  
 118 Warren Street  
 P.O. Box 306  
 Bolivar, Tennessee 38008  
 (731) 658-5170



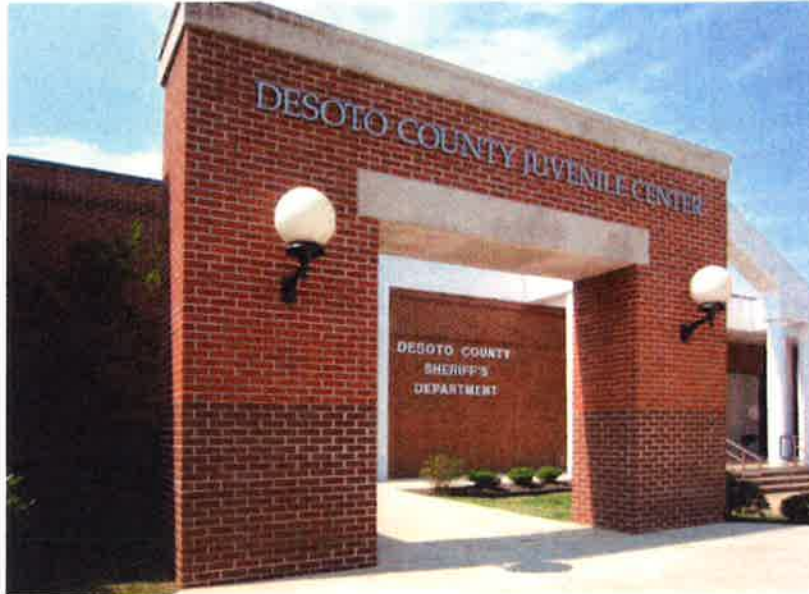
Architecture Interior Design Planning

343 North Main Street  
 Memphis Tennessee 38103  
 Telephone: 901-525-5344  
 Facsimile: 901-525-5420



EVANS TAYLOR FOSTER CHILDRESS ARCHITECTS

**DESOTO COUNTY JUVENILE JUSTICE COMPLEX  
 HERNANDO, MISSISSIPPI**



Main Entrance

The DeSoto County Juvenile Justice Complex is a “state of the art” facility for 24 male and 14 female detainees. The new facility replaces an existing outdated building and is connected to the existing jail complex. The design compliments the existing structures.

Occupancy	38 Beds
Size	10,465 SF
Cost	\$2,750,000
Supervision Type	Indirect
For more information contact:	
Michael Childress, AIA	
343 North Main Street	
Memphis, TN 38103	
901-525-5344	
mchildress@etfc-arch.com	



Dayroom



Lobby



## JACKSON COUNTY JAIL NEWPORT, ARKANSAS

Architecture Interior Design Planning

343 North Main Street  
Memphis Tennessee 38103  
Telephone: 901.525.5344  
Facsimile: 901.525.5420



EVANS TAYLOR FOSTER CHILDRESS ARCHITECTS, P.C.

Occupancy	110 Beds
Size	38,000 SF
Cost	\$8,891,611

For more information contact:

Michael Childress, AIA  
343 North Main Street  
Memphis, TN 38103  
901-525-5344  
mchildress@etfc-arch.com

The Jackson County Jail consists of 94 male and 16 female inmates both in dormitory style and 2 person cell configurations. The Jail also provides new administrative offices for the Sheriff and his staff. Support facilities include a hearing room, male/female intake/booking and processing area, medical exam and triage, kitchen and food service facilities and an enclosed vehicle sallyport, all of which are designed for a future population of over 250 inmates. Construction utilizes steel framing and brick veneer for the Sheriff's administrative areas. Reinforced concrete masonry and precast concrete are used for secure inmate areas. Construction was completed in early 2016.



Current Rendering

Architecture Interior Design Planning  
343 North Main Street  
Memphis Tennessee 38103  
Telephone: 901.525.5344  
Facsimile: 901.525.5420



EVANS TAYLOR FOSTER CHILDRESS ARCHITECTS

# MISSISSIPPI COUNTY LAW ENFORCEMENT CENTER LUXORA, ARKANSAS

Occupancy	266 Beds
Size	85,000 SF
Cost	\$12,050,000

For more information contact:

Michael Childress, AIA  
343 North Main Street  
Memphis, TN 38103  
901-525-5344  
mchildress@etfc-arch.com

The Mississippi County Law Enforcement Center provides 254 adult cells for men & women, 12 juvenile cells, the county sheriff's offices and support staff, visitation facilities, and a hearing room. Exterior construction is reinforced concrete masonry with a synthetic stucco finish. It features state-of-the-art perimeter detection and inmate tracking systems monitored by two levels of security control.



Main Entrance

Public Lobby



Housing Interior



**DESOTO COUNTY JAIL EXPANSION**  
**DE SOTO COUNTY, MISSISSIPPI**

Architecture Interior Design Planning

343 North Main Street  
 Memphis Tennessee 38103  
 Telephone: 901.525.5344  
 Facsimile: 901.525.5420



EVANS TAYLOR FOSTER CHILDRESS ARCHITECTS

Selected as a 2014 Excellence in Construction Award Winner, the DeSoto County Jail Expansion is a "state of the art" facility for 384 male and 160 female detainees. The Jail Annex will provide support facilities that include a new male and female intake, booking & processing area, medical triage, exam and holding areas, kitchen and food service storage including an enclosed vehicle sallyport, all designed for a future population of over 1000 inmates. Construction is seismically designed of pre-cast concrete columns, beams and roof-deck with reinforced concrete masonry interior walls and exterior insulated precast concrete walls.



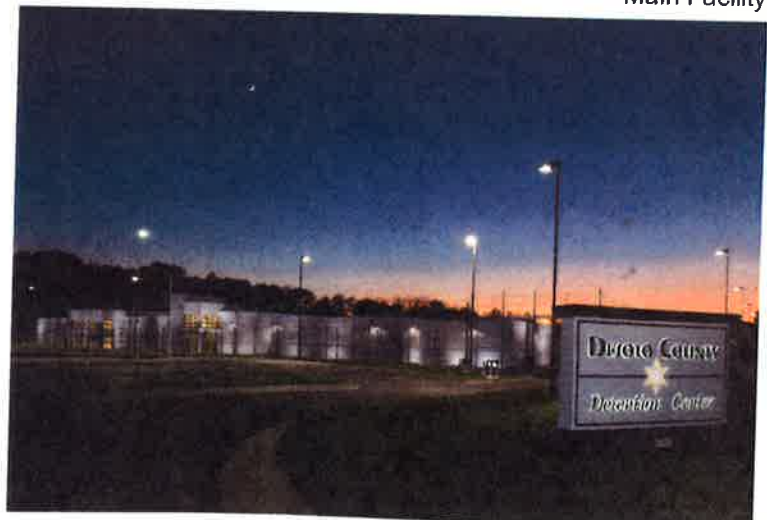
Main Entrance

Occupancy	544 Beds
Size	65,225 SF
Cost	\$29,000,000

For more information contact:

Michael Childress, AIA  
 343 North Main Street  
 Memphis, TN 38103  
 901-525-5344  
[mchildress@etfc-arch.com](mailto:mchildress@etfc-arch.com)

Main Facility





Architecture Interior Design Planning  
 343 North Main Street  
 Memphis Tennessee 38103  
 Telephone: 901 525 5344  
 Facsimile: 901 525 5420



EVANS TAYLOR FOSTER CHILDRESS ARCHITECTS

**HARDEMAN COUNTY CRIMINAL JUSTICE CENTER  
 BOLIVAR, TENNESSEE**

The Hardeman County Criminal Justice Center is a “state of the art” facility for 132 male and 44 female detainees. The Center will provide offices for the sheriff and his staff, Circuit and General Sessions Court rooms, enclosed vehicle sallyport (booking and release), Inmate medical and food service. Construction is seismically designed of steel and reinforced concrete masonry and brick veneer.



Main Entrance

Occupancy	176 Beds
Size	72,000 SF
Cost	\$16,210,000

For more information contact:

Michael Childress, AIA  
 343 North Main Street  
 Memphis, TN 38103  
 901-525-5344  
 mchildress@etfc-arch.com



Courtroom



County Court Clerk



## LAUDERDALE COUNTY JUSTICE CENTER RIPLEY, TENNESSEE

Architecture Interior Design Planning

343 North Main Street  
Memphis Tennessee 38103  
Telephone: 901 525.5344  
Facsimile: 901 525.5420



EVANS TAYLOR FOSTER CHILDRESS ARCHITECTS

The Lauderdale County Law Enforcement Center provides offices for the county sheriff and his staff, Circuit and General Sessions Courtrooms, vehicular Sallyport, and 124 jail cells with visitation facilities. Construction is seismic design of steel with reinforced concrete masonry and brick veneer.



Main Entrance

Occupancy	124 Beds
Size	50,650 SF
Cost	\$4,592,850

For more information contact:

Michael Childress, AIA  
343 North Main Street  
Memphis, TN 38103  
901-525-5344  
[mchildress@etfc-arch.com](mailto:mchildress@etfc-arch.com)



Entrance Lobby



Typical Court Room

Architecture Interior Design Planning

343 North Main Street  
Memphis Tennessee 38103  
Telephone: 901 525 5344  
Facsimile: 901 525 5420



EVANS TAYLOR FOSTER CHILDRESS ARCHITECTS

## NAVY BRIG - NAVAL AIR STATION MILLINGTON, TENNESSEE

Occupancy	87 Beds
Size	29,000 SF
Cost	\$2,900,000

Selected for inclusion in the AIA/ACA Exhibition of Architecture for Justice, the project consists of 2 dormitories, and male and female cells. Support facilities include administrative offices, kitchen, library, clinic, and recreational areas.

For more information contact:

Michael Childress, AIA  
343 North Main Street  
Memphis, TN 38103  
901-525-5344  
mchildress@etfc-arch.com



Main Entrance



Receiving Area

**SHELBY COUNTY JUSTICE CENTER  
MEMPHIS, TENNESSEE**

Architecture Interior Design Planning

343 North Main Street  
Memphis Tennessee 38103  
Telephone: 901.525.5344  
Facsimile: 901.525.5420



EVANS TAYLOR FOSTER CHILDRESS ARCHITECTS



Main Entrance

Occupancy	1,224 Beds
Size	835,000 SF
Cost	\$48,500,000

For more information contact:

Michael Childress, AIA  
343 North Main Street  
Memphis, TN 38103  
901-525-5344  
mchildress@etfc-arch.com

This facility in downtown Memphis consists of a 15 story Courts building connecting to a 6 story detention building. The main building contains 14 courtrooms with support facilities, City and County Law Enforcement offices, Attorney General, Public Defender, Court Clerk, and a 250 seat public auditorium. The detention facility is self-sufficient with a laundry, kitchen, medical clinic, chapel, and indoor and outdoor recreational facilities.

Typical Courtroom





Architecture Interior Design Planning  
 343 North Main Street  
 Memphis Tennessee 38103  
 Telephone: 901.525.5344  
 Facsimile: 901.525.5420



EVANS TAYLOR FOSTER CHILDRESS ARCHITECTS

**SHELBY COUNTY PRE-TRIAL DETENTION CENTER  
 SHELBY COUNTY, TENNESSEE**

Occupancy	384 Beds
Size	66,450 SF
Cost	\$9,076,000

For more information contact:

Michael Childress, AIA  
 343 North Main Street  
 Memphis, TN 38103  
 901-525-5344  
 mchildress@etfc-arch.com



Main Entrance

Designed, constructed, and substantially completed in 12 months, this Design/Build facility is intended to serve primarily female inmates. The 2-story housing wings, containing 384 beds, are constructed of pre-cast concrete. The connecting 1-story support building contains administration, intake and processing, recreation, visitation, and food service. It was completed at a cost of \$9,075,000.



Interior of Housing Unit



**HARDEMAN COUNTY CORRECTION CENTER  
WHITEVILLE, TENNESSEE**

Architecture Interior Design Planning  
 343 North Main Street  
 Memphis Tennessee 38105  
 Telephone: 901.525.5344  
 Facsimile: 901.525.5470  
**ETFC**  
 EVANS TAYLOR FOSTER CHILDRESS ARCHITECTS

Occupancy 2,048 Beds  
 Size 427,185 SF  
 Cost \$61,454,000

For more information contact:  
 Michael Childress, AIA  
 343 North Main Street  
 Memphis, TN 38103  
 901-525-5344  
 mchildress@etfc-arch.com

Built in two phases, this 1024 double cell facility is composed of 8 two-story housing units of 128 cells each. It is constructed of insulated pre-cast concrete panels with concrete masonry interior partitions. It includes state-of-the-art electronic security, and facilities for recreation, vocational training, food service, and visitation.



Main Entrance



Aerial View of Complex

Architecture Interior Design Planning

343 North Main Street  
 Memphis Tennessee 38103  
 Telephone: 901.525.5344  
 Facsimile: 901.525.5420



EVANS TAYLOR FOSTER CHILDRESS ARCHITECTS

**WEST TENNESSEE MEDIUM SECURITY PRISON  
 LAUDERDALE COUNTY, TENNESSEE**



Main Entrance

Occupancy	1,524 Beds
Size	315,900 SF
Cost	\$47,185,000

---

For more information contact:

Michael Childress, AIA  
 343 North Main Street  
 Memphis, TN 38103  
 901-525-5344  
[mchildress@etfc-arch.com](mailto:mchildress@etfc-arch.com)

This facility was based on prototype designs of the Tennessee Department of Corrections. The housing consists of 6 buildings, each with two 2-story pods with common support space, and containing a total of 762 double cells. In addition to the housing, the campus like complex has 3 activity buildings, a medical services building, visitation, and administrative services buildings.



Typical Housing Unit



Control Center

## CITY OF BARTLETT LAW ENFORCEMENT CENTER BARTLETT, TENNESSEE

Architecture Interior Design Planning

343 North Main Street  
Memphis, Tennessee 38103  
Telephone: 901.525.5344  
Facsimile: 901.525.5420



EVANS TAYLOR FOSTER CHILDRESS ARCHITECTS

This facility of 29,500 sq. ft. contains the offices of the Bartlett Police Department, the municipal courts, and detention facilities for 40 inmates both male and female. It is a key element in the Bartlett Civic Center.

Occupancy	40 Beds
Size	29,529 SF
Cost	\$3,633,000

For more information contact:

Michael Childress, AIA  
343 North Main Street  
Memphis, TN 38103  
901-525-5344  
mchildress@etfc-arch.com



Main Entrance



Typical Court Room



Entrance Lobby



Architecture Interior Design Planning  
343 North Main Street  
Memphis Tennessee 38103  
Telephone: 901.525.5344  
Facsimile: 901.525.5420



EVANS TAYLOR FOSTER CHILDRESS ARCHITECTS

### TALLAHATCHIE COUNTY CORRECTION CENTER TUTWILER, MISSISSIPPI

Occupancy	40 Beds
Size	29,529 SF
Cost	\$3,633,000

For more information contact:

Michael Childress, AIA  
343 North Main Street  
Memphis, TN 38103  
901-525-5344  
mchildress@etfc-arch.com

Built in two phases, this 1400 double cell facility is composed of 9 two-story housing units. It is constructed of insulated pre-cast concrete panels with concrete masonry interior partitions. It includes state-of-the-art electronic security, and facilities for recreation, vocational training, food service, and visitation.



Main Entrance



Aerial View of Complex



# RN SYSTEMS DESIGN, L.L.C.

615 Oakleaf Office Lane  
Memphis, Tennessee 38117  
Phone: 901-309-0115 Fax: 901-309-0292  
Email: frankn@rnsystemsdesign.com

Single-source security systems consultation for total systems planning. We are free of ties to any particular manufacturer and can select the best product for the situation. Our goal is to provide the most cost effective solution for each project.

### Experts in Security Systems Design

R&N enjoys a growing national reputation among architectural firms and facility owners and operators as the leader in the specialized field of security system design. R&N creates innovative design solutions that set new standards in critical areas of security and life safety. The firm wins high praise for its depth of knowledge, research-based solutions, and comprehensive system designs utilizing state-of-the-art equipment.

### From Big Picture to Smallest Detail

From concept to completion, every detail, every decision, every recommendation is based on thorough research and more than 50 years of practical, hands-on experience. R&N brings special insight, knowledge and know-how to the creation and implementation of each security system design.

### R & N provides:

- Single-source consultation for security electronics systems to simplify project coordination.
- Experience in security system design, fabrication, installation, and commissioning that ensures a properly functioning integrated system.
- Total design solutions, customized to meet specific needs, optimize the value of each dollar invested.
- Leading-edge equipment and technology that complement the building design.
- Broad construction knowledge that enables R&N to support the client with any construction issues.
- Experience on facilities ranging from small County facilities to larger Federal projects. This Experience allows R&N to design systems to fit the project requirements.
- Wide-ranging experience and outstanding track record for being a team player in design-build as well as conventional bid projects.

### Unparalleled Experience

The team at R&N have devoted their professional careers to designing highly integrated security systems consisting of multiple subsystems. It's not just their profession, it's their passion. Their portfolios include more than 360 security system design projects in jurisdictions across the nation.

### R&N has provided design services for:

- IP camera systems integrated with PLC door Control systems.
- IP camera systems integrated with Card Access Control systems.
- Fire Alarm systems integrated with PLC door Control systems.
- Fire Alarm systems integrated with Card Access Control systems.
- Intercom and paging systems integrated with PLC door Control systems.
- Common fiber optic infrastructure supporting multiple separate systems and networks.
- Uninterruptible Power Supplies integrated with reporting systems.
- Personal alarm systems integrated with central annunciation systems.
- Perimeter detection systems integrated with camera systems.
- Retrofits of existing systems with new equipment.
- Construction Administration services for security systems.

### Single-Source Consultation

As a single-source for multiple subsystems, R&N is uniquely qualified to simplify and unify project coordination, design, and testing.

### Security Electronic Systems

Services include the design of fully integrated low voltage security electronic systems, including, but not limited to:

- o PLC Based Locking Control Systems
- o Touch Screen Graphic Control Systems
- o Internet Protocol (IP) Video Surveillance Systems
- o Intercom and Paging Systems
- o Fire Alarm Systems
- o Telephone and Data Networks
- o Fiber Distribution Networks
- o Perimeter Detection Systems
- o Video Visitation and Arraignment
- o Personal Alarm Systems
- o Uninterruptible Power Supply (UPS)



- **Conditional Security Assessment at Existing Facilities**

Includes services such as site visits, assessment reports, recommendations and projected cost.

- **Security System Controls Replacements/Upgrades at Existing Facilities**

Includes design services for replacement/upgrade of security electronic systems at existing facilities.

- **Perimeter Detection Replacements/Upgrades at Existing Facilities**

Includes design services for perimeter detection system replacement/upgrade at existing facilities.

### R&N Leadership Team

**Frank A. Niedzwiedz, PE, NCEES**  
frank@rnsystemsdesign.com



Mr. Niedzwiedz has dedicated his 32 year career to justice and correctional facilities focusing on the low voltage electronics systems. More specifically, his responsibilities have included systems design, construction administrations, and commissioning while utilizing the latest technologies to serve the client's needs. Mr. Niedzwiedz is licensed professional engineer in 31 states where he has worked on projects utilizing his extensive background for the design of correctional facilities. His years of education and experience have enabled him to deal with the integration of complex low voltage systems on all size projects for Federal, State, and local jurisdictions. He has a Bachelor of Science in Electrical Engineering from Christian Brother's University, Memphis, Tennessee.

**Dennis Sebo, Security Consultant**  
denniss@rnsystemsdesign.com



Mr. Sebo has dedicated his 35 year career to Industrial Maintenance and correctional facilities. He has focused on the medium voltage electrical systems for industrial plants and low voltage electronic systems that served the security and

## RN SYSTEMS DESIGN, L.L.C.

Life-Safety needs of the correctional industry. Over the past eight years, he has had a hands-on role in the design of over 20 low-voltage system projects representing R&N Systems Design as the lead design engineer. Prior to this he served as Engineering Manager for design and fabrication of security equipment for a leading security contracting and systems manufacturing company. He has a Bachelor of Science degree in Electrical Engineering from the University of Memphis.

**Chris Nielsen, PE**  
chris@rnsystemsdesign.com



Mr. Nielsen is skilled in the development of low voltage computer and electronic networks and is adept in the latest design software including Revit, Auto-CAD, and Pro-Engineer. Mr. Nielsen has more than 9 years of experience in Building Information Modeling (BIM), computer aided drafting, network design and project management. Mr. Nielsen is a licensed professional engineer in 4 States. Mr. Nielsen has an intricate knowledge of computer, electrical, low voltage security, communication and fire alarm system design. Prior to position with R&N, Mr. Nielsen managed a private business that averaged well over a million dollars in annual sales for 13 years. He has a Bachelor of Science in Electrical Engineering from Christian Brother's University, Memphis, Tennessee.

**Dean Williams, Security Consultant**  
deanw@rnsystemsdesign.com

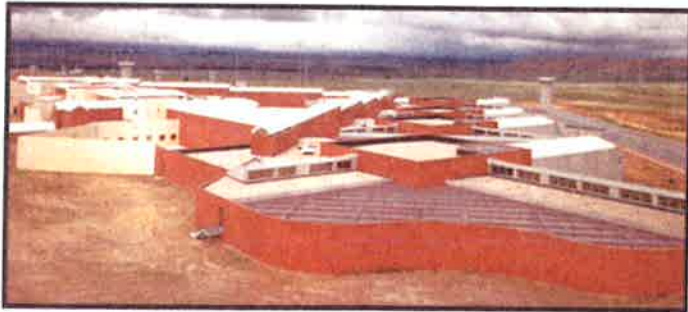


Mr. Williams has more than 25 years of experience in detention project management, jobsite construction management, and systems installation. His detention construction experience ensures that R&N's designs are sound and that installation is performed to the highest standard. Mr. Williams offers a wealth of "hands on" knowledge of detention, electrical, security, communication, and fire alarm systems. Mr. Williams provides R&N's clients with the depth and breadth of knowledge that can only be obtained by building detention facilities across the county.



# RN SYSTEMS DESIGN, L.L.C.

## NOTABLE PROJECTS



**United States Penitentiary - ADX  
Florence, Colorado**

Federal Bureau of Prison's Supermax prison for inmates who are deemed in need of the tightest control. R&N Systems Design provided design and project management for the upgrade of the facilities security system between 2010 and 2014.



**Bledsoe County Correctional Complex  
Pikeville, Tennessee**

1444 Bed Facility

## EXAMPLES OF COUNTY FACILITIES WITH COURTHOUSES



**Highlands County Courthouse & Jail  
Sebring, Florida**



**Yuma County Juvenile Jail & Courthouse  
Yuma, Arizona**



**El Paso County Courthouse  
Colorado Springs, Colorado  
189,000 SF Addition**



**NEW PRISON FACILITIES****Bledsoe County Correctional Complex**

Pikeville, Tennessee  
1444 Bed Facility

**Wyoming Medium Correctional Institution**

Torrington, Wyoming  
696 Bed Medium Security Facility

**Chillicothe Reception & Diagnostic Center**

Chillicothe, Missouri  
1636 Bed Women's Facility

**Deer Ridge Correctional Institution**

Madras, Oregon  
1867 Bed Medium Security Prison

**Red Rock Correctional Center**

Eloy, Arizona  
1596 Bed Medium Security Facility

**Jenkins Correctional Center**

Millen, Georgia  
1150 Bed Medium Security Facility

**San Diego Detention Center**

East Otay Mesa, California  
1026 Bed Detention Center

**Nevada Southern Detention Center**

Pahrump, Nevada  
1176 Bed Medium Security Facility

**Adams County Correctional Center**

Natchez, Mississippi  
2436 Bed Medium Security Prison

**La Palma Correctional Center**

Eloy, Arizona  
3060 Bed Medium Security Prison

**Saguaro Correctional Center**

Eloy, Arizona  
1926 Bed Medium Security Facility

**Trousdale County Correctional Center**

Hartsville, Tennessee

**RN SYSTEMS DESIGN, L.L.C.****PRISON FACILITY EXPANSIONS****Tallahatchie County Correctional Facility**

Tutwiler, Mississippi  
720 Bed Housing Addition  
Architect: Evans Taylor Foster Childress – Memphis, TN

**Adams County Correctional Center Housing Expansion Natchez, Mississippi**

360 Bed Housing Expansion

**Lake City Correctional Facility**

Lake City, Florida  
543 Bed Youthful Offender Addition

**Laredo Processing Center Renovation & Expansion**

Laredo, Texas  
378 Bed Expansion & Renovation

**McPherson Women's Unit Addition**

Newport, Arkansas  
100 Bed Segregation Housing Unit Addition

**Red Rock Correctional Center**

Eloy, Arizona  
1000 Bed Expansion and Renovation

**Davis Correctional Facility**

Holdenville, Oklahoma  
720 Bed Addition

**CNMCF Mental Health Facility**

Los Lunas, New Mexico  
108 Bed Addition

**Eden Detention Center – FBOP-CAR6**

Eden, Texas  
136 Bed Housing Unit Addition

**Bay Correctional Facility**

Panama City, Florida  
289 Bed Housing Expansion

**Idaho Correctional Center**

Kuna, Idaho  
312 Bed Addition

**Florence Correctional Center**

Florence, Arizona  
220 Bed Housing Addition

**RN SYSTEMS DESIGN, L.L.C.****PRISON FACILITY EXPANSIONS, continued****Bent County Correctional Facility**

Las Animas, Colorado  
720 Bed Housing Expansion

**Cimarron Correctional Facility**

Cushing, Oklahoma  
720 Bed Addition

**North Fork Correctional Facility**

Sayre, Oklahoma  
960 Bed Housing Addition

**Crowley County Correctional Facility**

Olney Springs, Colorado  
528 Bed Addition

**Houston Processing Center - ICE Facility**

Houston, Texas  
600 Bed Addition and Renovation

**Gadsden County Correctional Center**

Quincy, Florida  
384 Bed Housing Unit Expansion

**Kit Carson Correctional Center**

Burlington, Colorado  
720 Bed Housing Addition

**COUNTY FACILITIES****Hancock County Jail**

Bay St. Louis, Mississippi  
New 300 Bed Jail & Sheriff's Offices

**Desoto County Jail Expansion**

Hernando, Mississippi  
264 Bed Expansion & Renovation  
Architect: Evans Taylor Foster Childress

**Desoto County Jail**

Hernando, Mississippi  
160 Bed Housing Addition

**Jefferson Davis County Detention Center**

Prentiss, Mississippi  
New 100 Bed Jail

**Van Horn Youth Treatment Center**

Riverside, California  
100 Bed Secure Facility for High Risk Youth Offenders

**Monterey County New Juvenile Hall**

Salinas, California  
Existing Facility Demolished, New Construction  
Replacement

**Kings County Jail**

Hanford, California  
Phase II & Phase III Jail Expansion

**Jackson County Jail**

Newport, Arkansas  
100 Bed New Jail Building Complex

**Coffee County Jail**

Manchester, Tennessee  
208 Bed New Medium Security Jail

**South Correctional Entity-King County (SCORE)**

Des Moines, Washington  
New 813 Bed Multi-Custody Facility

**Fayette County Criminal Justice Center**

Oakland, Tennessee  
New 174 Bed Jail Facility

**Wayne County Detention Center**

Waynesboro, Tennessee  
New 128 Bed Facility

**Kayenta Public Safety Building**

Kayenta, Arizona  
Police Dept. and Detention Center

**Kenton County Detention Facility**

Covington, Kentucky  
New 580 Bed Facility

**Roan County Sheriff's Office & Detention Center**

Kingston, Tennessee  
New 185 Bed Facility

**Ouachita County Detention Complex**

Camden, Arkansas  
New 150 Bed Jail

**Saline County Law Enforcement Center**

Wilber, Nebraska  
New 50 Bed Facility

**Scott County Justice Complex**

Huntsville, Tennessee  
New 120 Bed Jail

**Logan County Jail**

Guthrie, Oklahoma  
New 166 Bed Detention Facility

**COUNTY FACILITIES, Continued****Gibson County Jail**

Trenton, Tennessee  
New 298 Bed Jail

**Cibola County Jail**

Grants, New Mexico  
New 160 Bed Facility

**San Carlos Apache Tribe Facility**

San Carlos, Arizona  
New 156 Bed Facility

**Lafayette Police Facility**

Lafayette, Colorado  
26,000 SF New Facility

**White County Correctional Facility**

Searcy, Arkansas  
New 240 Bed Facility

**El Paso County Courthouse**

Colorado Springs, Colorado  
189,000 SF Addition

**Bay County Correctional Annex**

Panama City, Florida  
688 Bed Addition

**Hickman County Jail**

Centerville, Tennessee  
New 114 Bed Jail

**Washington County Jail**

Fayetteville, Arkansas  
New 560 Bed Facility

**Sauk County Law Enforcement Center**

Baraboo, Wisconsin  
New 458 Bed Facility

**Yuma County Juvenile Jail & Courthouse**

Yuma, Arizona  
144 Bed Facility

**Columbia County Jail**

Portage, Wisconsin  
192 Bed Addition

**Sandoval County Jail**

Bernalillo, New Mexico  
240 Bed Addition

**RN SYSTEMS DESIGN, L.L.C.****Hot Spring County Jail**

Malvern, Arkansas  
New 50 Bed Jail

**SECURITY SYSTEM / EQUIPMENT REPLACEMENT / UP-  
GRADE****California City Correctional Center**

California City, California  
2304 Bed Security Systems Upgrade

**Stewart Detention Center**

Lumpkin, Georgia  
1752 Bed Security Systems Upgrade

**Eloy Detention Center**

Eloy, Arizona  
1596 Bed Security Systems Upgrade

**Webb County Detention Center**

Laredo, Texas  
480 Bed Security Systems Upgrade

**United States Penitentiary - ADX**

Florence, Colorado  
550 Bed Security Systems Upgrade

**Clark County Detention Center**

Las Vegas, Nevada  
North Tower Renovations / Security Upgrade

**Stewart Detention Center**

Lumpkin, Georgia  
1752 Bed Security Systems Upgrade

**Cibola County Jail**

Grants, New Mexico  
1129 Bed Security Systems Upgrade

**Eden Detention Center - FBOP-CAR6**

Eden, Texas  
1558 Bed Security Systems Upgrade

**Bay Correctional Facility**

Panama City, Florida  
985 Bed Security Systems Upgrade

**New Mexico Women's Correctional Facility**

Grants, New Mexico  
611 Bed Security Systems Upgrade





R & N consultant experience

# RN SYSTEMS DESIGN, L.L.C.

## SECURITY SYSTEM / EQUIPMENT REPLACEMENT / UP-GRADE, continued

### Prairie Correctional Facility

Appleton, Minnesota  
1600 Bed Security Systems Upgrade

### Metro Davidson County Detention Facility

Nashville, Tennessee  
1348 Bed Security Systems Upgrade

### Diamondback Correctional Facility

Watonga, Oklahoma  
2160 Bed Security Systems Upgrade

### Lake City Correctional Facility

Lake City, Florida  
893 Bed Security Systems Upgrade

### Whiteville Correctional Facility

Whiteville, Tennessee  
1536 Bed Security Systems Upgrade

### Snohomish County Correctional Facilities

Everett, Washington  
1300 Bed Security Systems Upgrade

### Lee Adjustment Center

Beattyville, Kentucky  
816 Bed Security Systems Upgrade

### Correctional Treatment Facility

Washington, DC  
2340 Bed Security Systems Upgrade

### Houston Processing Center - ICE Facility

Houston, Texas  
1000 Bed Security Systems Upgrade

### Gadsden County Correctional Center

Quincy, Florida  
1200 Bed Security Systems Upgrade

### Kit Carson Correctional Center

Burlington, Colorado  
1488 Bed Security Systems Upgrade

### Yakima County Jail

Yakima, Washington  
580 Bed Security & Detention Systems Upgrade

### Shelby County Jail

Memphis, Tennessee  
2000 Bed Security Systems Upgrade

### Huerfano County Correctional Center

Walsenburg, Colorado  
752 Bed Security Systems Upgrade

### Torrance County Detention Facility

Estancia, New Mexico  
910 Bed Security Systems Upgrade

### West Tennessee Detention Facility

Mason, Tennessee  
600 Bed Security & Detention Systems Upgrade

### Leavenworth Detention Center

Leavenworth, Kansas  
1126 Bed Security Systems Upgrade

### Bent County Correctional Facility

Las Animas, Colorado  
1466 Bed Security Systems Upgrade

### Monterey County Main Jail Facility

Salinas, California  
Locking Control System Upgrades

### Monterey County Main Jail Facility

Salinas, California  
Video Surveillance System Upgrades

## PERIMETER DETECTION REPLACEMENT / UPGRADE AT EXISTING FACILITIES

### Wilkinson County Correctional Facility

Woodville, Mississippi

### Crowley County Correctional Facility

Olney Springs, Colorado

### Northeast Ohio Correctional Center

Youngstown, Ohio

### Crossroads Correctional Facility

Shelby, Montana

### Stewart Detention Center

Lumpkin, Georgia

### Eloy Detention Center

Eloy, Arizona



**PERIMETER DETECTION REPLACEMENT / UPGRADE AT EXISTING FACILITIES, continued**

**Webb County Detention Center**  
Laredo, Texas

**Lee Adjustment Center**  
Beattyville, Kentucky

**North Fork Correctional Facility**  
Sayre, Oklahoma

**Cimarron Correctional Facility**  
Cushing, Oklahoma

**Central Arizona Detention Center**  
Florence, Arizona

**Huerfano County Correctional Center**  
Walsenburg, Colorado

**Prairie Correctional Facility**  
Appleton, Minnesota

**Bent County Correctional Facility**  
Las Animas, Colorado

**Lake Erie Correctional Institution**  
Conneaut, Ohio

**Whiteville Correctional Facility**  
Whiteville, Tennessee

**Metro Davidson Detention Center**  
Nashville, Tennessee

**Otter Creek Correctional Center**  
Wheelwright, Kentucky

**Citrus County Detention Facility**  
Lecanto, Florida

**Florence Correctional Center**  
Florence, Arizona

**New Mexico Women's Correctional Facility**  
Grants, New Mexico

**Kit Carson Correctional Center**  
Burlington, Colorado

**Davis Correctional Facility**  
Holdenville, Oklahoma

**RN SYSTEMS DESIGN, L.L.C.**

**West Tennessee Detention Facility**  
Mason, Tennessee

**Idaho Correctional Center**  
Kuna, Idaho

**Torrance County Detention Facility**  
Estancia, New Mexico

**Cibola County Correctional Center**  
Milan, New Mexico

**Laredo Processing Center**  
Laredo, Texas

**CONDITIONAL SECURITY ASSESSMENTS**

**Delta Correctional Facility**  
**Greenwood, Mississippi**  
1172 Bed Facility

**Tallahatchie County Correctional Facility**  
**Tutwiler, Mississippi**  
2800 Bed Facility

**Wilkinson County Correctional Facility**  
**Woodville, Mississippi**  
1000 Bed Facility

**Atlanta Detention Center**  
Atlanta, Georgia  
1250 Bed Facility

**Salinas Juvenile Facility**  
Salinas, Puerto Rico  
196 Bed Facility

**Snohomish County Correctional Facilities**  
Everett, Washington  
1300 Bed Facility

**Graceville Correctional Facility**  
Graceville, Florida  
1292 Bed Facility

**Moore Haven Correctional Facility**  
Moore Haven, Florida  
985 Bed Facility



R & N consultant experience

# RN SYSTEMS DESIGN, L.L.C.

## CONDITIONAL SECURITY ASSESSMENTS, continued

### North Central Correctional Institution

Marion, Ohio  
2226 Bed Facility

### Lake Erie Correctional Institution

Conneaut, Ohio  
1798 Bed Facility

### Grafton Correctional Institution

Grafton, Ohio  
1127 Bed Facility

### North Coast Correctional Treatment Facility

Grafton, Ohio  
840 Bed Facility

### Cibola County Correctional Center

Milan, New Mexico  
1129 Bed Facility

### South Central Correctional Center

Clifton, Tennessee  
1676 Bed Facility

### Harris County Jail Complex – 4 Buildings

Houston, Texas  
1000 Beds

### Charles R. Denney Juvenile Justice Center

Everett, Washington

### United States Penitentiary - ADX

Florence, Colorado  
550 Bed Facility

### Hall County Detention Center

Gainesville, Georgia  
478 Bed Facility

### Eden Detention Center (Inmate Separation)

Eden, Texas  
1558 Bed Facility

### Kit Carson Correctional Center

Burlington, Colorado  
1488 Bed Facility

### Florence Correctional Center

Florence, Arizona  
1824 Bed Facility

### McRae Correctional Facility

McRae, Georgia  
1524 Bed Facility

### Hernando County Jail

Brooksville, Florida  
730 Bed Facility

### California City Correctional Center

California City, California  
2304 Bed Facility

### Leavenworth Detention Center

Leavenworth, Kansas  
1126 Bed Facility

### Brush Correctional Facility

Brush, Colorado  
286 Bed Facility

### Cimarron Correctional Facility

Cushing, Oklahoma  
1032 Bed Facility

### Coffee Correctional Facility

Nicholls, Georgia  
2628 Bed Facility

### Wheeler Correctional Facility

Alamo, Georgia  
3028 Bed Facility

### Hardeman County Correctional Facility

Whiteville, Tennessee  
2016 Bed Facility

### Davis Correctional Facility

Holdenville, Oklahoma  
1600 Bed Facility

### Whiteville Correctional Facility

Whiteville, Tennessee  
1536 Bed Facility

### Northeast Ohio Correctional Center

Youngstown, Ohio  
2016 Bed Facility

### Marion Adjustment Center

St. Mary, Kentucky  
826 Bed Facility

### El Paso Multi-Use Facility

El Paso, Texas  
324 Bed Facility





**RN** SYSTEMS DESIGN, L.L.C.**REFERENCES**

Mr. Butch Faoro, Supervisory Contract Specialist  
Federal Bureau of Prisons  
Federal Correctional Complex  
5880 Highway 67 South  
Florence, CO 81226  
(719) 784-5744  
Email: lfaoro@bop.gov

Mr. John Watkins, Program Support Coordinator,  
Facilities, Planning and Construction  
Tennessee Department of Correction  
2nd Floor, Rachel Jackson Bldg.  
320 Sixth Avenue North  
Nashville, Tennessee 37243  
(615) 253-8154  
Email: john.watkins@tn.gov

Mr. Tim Aebie, Senior Director of Architecture-Real  
Estate Development  
Corrections Corporation of America  
10 Burton Hills Boulevard  
Nashville, Tennessee 37215  
(615) 263-6707  
Email: timothy.aebie@cca.com

Mr. Tom Bartelli, Vice President Pre-Construction  
J.E. Dunn  
1001 Locust Street  
Kansas City, MO 64106  
(816) 292-8683  
Email: tom.bartelli@jedunn.com



Smith Seckman Reid, Inc. (SSR) is an employee-owned corporation, headquartered in Nashville, Tennessee. Our firm is focused on providing engineering, commissioning, and technology services across the United States and around the world. Our services are of the highest quality, based on the in-depth experience and expertise of our engineers, consultants, and all of our staff.

#### Established

1968

#### Offices

10

#### Employees

365

#### Engineering Services

- Civil
- Electrical
- Environmental
- Fire Protection
- Instrumentation & Controls
- Mechanical
- Plumbing
- Structural
- Transportation

#### Commissioning Services

- Commissioning
- Continuous Commissioning®
- Building Enclosure
- Sustainability Consulting
- Energy Consulting

#### Technology Services

- Healthcare IT Consulting
- Communication Systems Design
- Project Management
- Clinical Consulting

#### Shared Values

**Working Together:** We share the best ideas and discover the best solutions as we collaborate and work as a team.

**Assuring Trust:** We count on each other, live up to our commitments, and do the right thing.

**Improving Always:** We learn every day and use our new knowledge to create meaningful innovations.



**Living Fully:** We celebrate life and work, we engage with enthusiasm and balance, and we give back to our communities.

**Raising the Bar:** We create exceptional experiences and outstanding results.

#### Markets

SSR delivers services for facilities nationwide and has a diverse portfolio of clients in a variety of industries. Our team provides a wealth of experience across a broad variety of industries to deliver advanced engineering solutions that last.

- Commercial
- Corrections
- Education
- Federal
- Healthcare
- Industrial
- Infrastructure
- Labs & Research
- Sports & Entertainment
- Transportation

#### Recognitions

- Ranked 213th by Engineering News Record for U.S. design firms
- Ranked 12th by Building Design & Construction among consulting engineers
- Ranked 17th by Consulting-Specifying Engineer 100 Giants
- Ranked 1st by ZweigWhite 2011 Largest Firms (>300 employees) Best Firms to Work For
- Ranked 3rd by ZweigWhite 2011 Multidiscipline A/E Services Best Firms to Work For

Many correctional and detention institutions often undergo institution population changes to accommodate bed capacity, security level and population management needs. At a variety of security levels, SSR has been providing engineering design and consulting services to correctional and detention facilities since 1970.



### Partial Project List - Corrections Market

Arkansas Correctional Facility  
 Bay County Jail  
 Beaumont Federal Corrections Complex (Low)  
 Beaumont Federal Corrections Institute (Medium)  
 Beaumont United States Penitentiary  
 Blackwater River Correctional Facility  
 Collierville Justice Center Study  
 Crittenden County Jail  
 Deberry Correctional Institute  
 Decatur County Jail  
 DeSoto County Jail  
 East Mississippi Correctional Facility  
 Forrest City Federal Prison  
 Hardeman County Criminal Justice Center  
 Jordonia Educational Building  
 Lafayette Chancery Building  
 Lauderdale County Justice Center  
 Lawrence County Correctional Facility  
 Lee County Juvenile Detention Facility  
 Logan County Jail  
 Loudon County Justice Center  
 Lowndes County Juvenile Detention Center  
 Marion Adjustment Center Correctional Facility  
 Metro Davidson County Detention Facility  
 Middle Tennessee Reception Center  
 Miller County Detention  
 Mississippi County Law Enforcement Center  
 Northeast Indiana Youth Village  
 Pollock United States Penitentiary  
 Riverbed Maximum Security  
 Robertson County Correctional Facility  
 Saline County Jail  
 Scott County Courthouse & Jail  
 Sevier County Jail  
 Shelby County Criminal Justice Center  
 Smith County Jail and Sheriff's Office  
 South Central Correction Center  
 Spencer Youth Center  
 Sullivan Marion Adjustment Center  
 Tallahatchie County Correctional Facility  
 Tennessee Department of Corrections  
 Trousdale County Correctional Facility  
 Walnut Grove Correctional Facility  
 Webb County Correctional  
 White County Jail and Justice Center  
 Wilkinson County Correctional Facility  
 Yazoo City Federal Correctional Institution





Trousdale Turner Correctional Facility  
Hartsville, Tennessee



**Summary**

SSR was the consultant on Mechanical, Electrical, Plumbing, and Fire Protection for this new 2,040 bed facility. At 438,596 SF, this project - a medium security facility - includes the addition of five new general population housing units, and administration building, visitation building, maintenance building as well as a Religious and Educational Program Building. Six covered recreational areas. General Administration building includes food service, commissary, warehouse, intake, medical area, central control and a laundry.

SSR also performed a mechanical energy analysis and determined that desiccant-based dedicated outside air units could significantly reduce project tonnage providing payback within less than five years.

**Project Type**

Corrections

**Owner**

Corrections Corporation of America

**Construction Cost**

\$140 million

**Project Size**

438,596 SF

**Project Completion**

2015

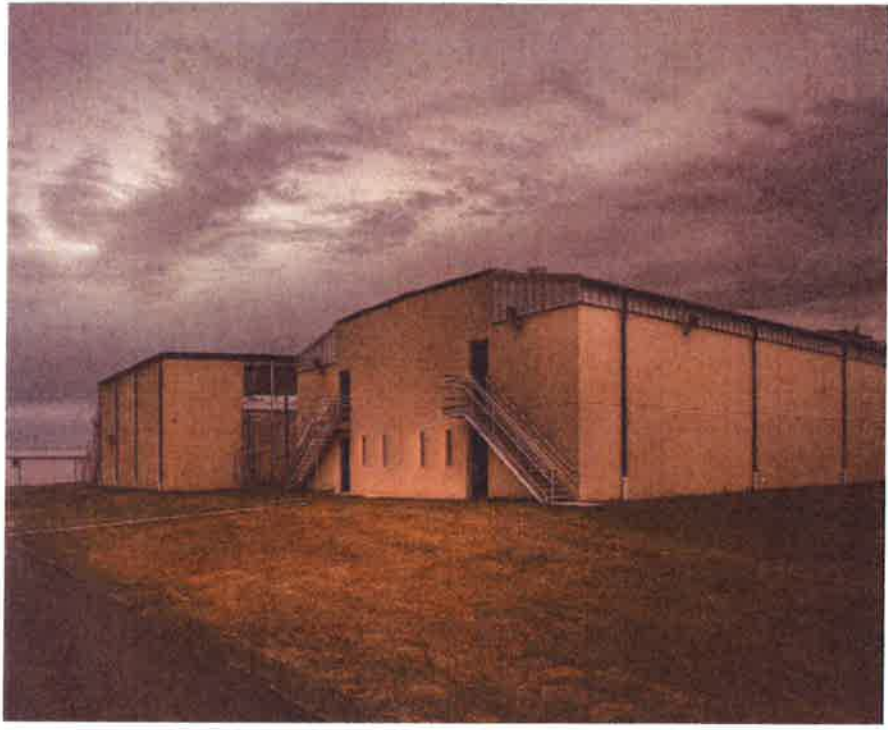
**Services Provided**

Mechanical, Electrical, and Plumbing

**PROJECT EXPERIENCE**



**Blackwater River Correctional Facility  
Milton, Florida**



**Summary**

This project was a 2,000 bed medium/maximum security correctional facility to house adult male inmates in northwest Florida. The facility includes a total of eight buildings with six two-story housing units and associated support buildings to house medical, programs/educational, religious, administration, outdoor recreation and laundry (which uses a water recycling system). Mechanical system included a chilled water central plant with roof mounted HVAC equipment. SSR provided mechanical and plumbing engineering design services for the project. The facility has achieved LEED® Gold certification and is one of the first LEED® certified correctional facilities in the state.

**Project Type**

Correctional

**Owner**

The GEO Group, Inc.

**Construction Cost**

\$50 Million

**Project Size**

365,000 SF

**Project Completion**

2010

**Services Provided**

Mechanical and Plumbing





Metro Detention Facility  
Nashville, Tennessee



Summary

This 40,000 SF concrete facility is Metro Nashville's newest correctional facility. The county owned building, which is operated by Corrections Corporation of America, is a medium security facility. The project achieved LEED® Silver certification and if successful will be the state's first LEED® certified detention facility. Design incorporated elements such as a geothermal heat pump system, low-flow plumbing fixtures, solar panels, and parking for alternative fuel vehicles.

The project was completed in 2011 at a construction cost of \$10 million. SSR was responsible for mechanical, electrical, plumbing, and fire protection design.

Project Type

Correctional

Owner

Metropolitan Government of Nashville and Davidson County

Construction Cost

\$10 Million

Project Size

40,000 SF

Project Completion

2011

Services Provided

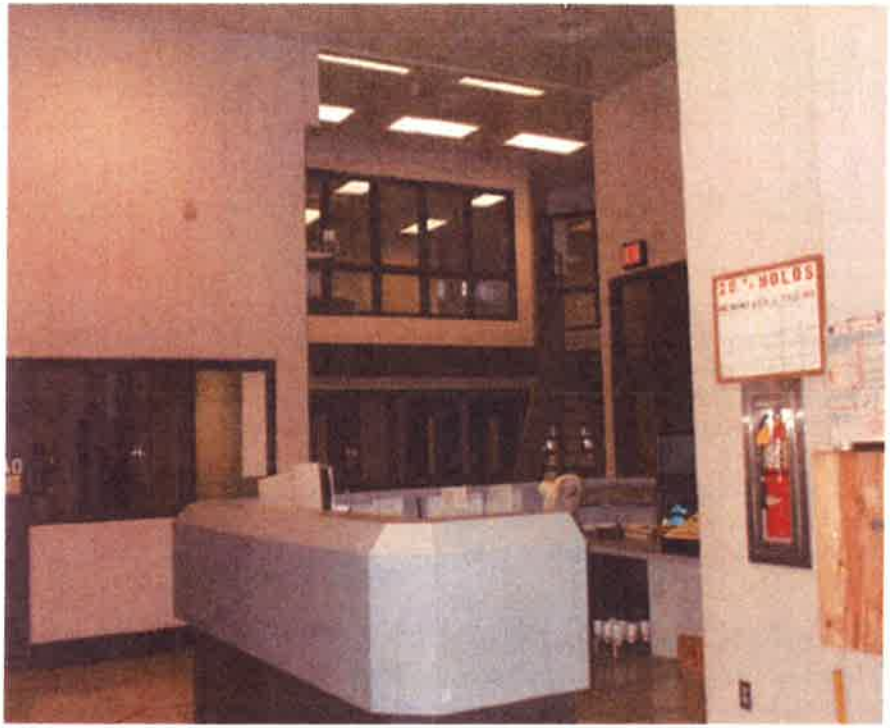
Mechanical, Electrical, Plumbing, and Fire Protection



PROJECT EXPERIENCE



Saline County Jail  
Saline County, Arkansas



**Summary**

The project was a new, 31,120 SF facility to house the sheriff's department and detention center. The facility includes a full service kitchen and laundry area. Services provided included structural, mechanical, plumbing, and fire protection services.

**Project Type**

Correctional

**Owner**

Saline County Government

**Construction Cost**

\$6.6 Million

**Project Size**

31,120 SF

**Project Completion**

2007

**Services Provided**

Mechanical, Electrical, Plumbing, Fire Protection, and Structural



## Riverbend Maximum Security Institution Underground Loop & Water Heater Replacement Nashville, Tennessee



### Summary

This project involved providing a completely new underground hot water distribution loop, and decommissioning of the failing existing underground loop on an active and occupied maximum security state prison in Tennessee. A central heating and cooling plant provides central hot water and chilled water to accommodate the heating and cooling needs of this 16 building campus. The space heating and domestic water needs in each building were served by the existing underground hot water loop, and interruptions to either service were mandated by the Warden to be limited to absolute minimums. The detailed and coordinated project phasing plan was developed and established in complete cooperation with the facilities management personnel for the institution.

Air handling units in each building were provided with hot water directly from the underground loop, while the domestic water heat exchangers in each building received loop water as the heating source for domestic water heating needs.

Due to the sustained continued operation of the occupied detention facility, new underground paths for a replacement piping loop were required and often resulted in new building entrance locations in areas far from the existing utility entrances. Building piping distribution systems were evaluated to determine the opportunity for utilizing the existing piping to 'back-feed' equipment. With this creative approach, in most all cases it was determined that the existing piping systems would accommodate the new distribution patterns within the building resulting in only one building that required interior 'cross-over' piping in an occupied detention area.

In depth coordination occurred during the design phase for intended routing of the new water loop in relation to all existing on-site underground utilities inclusive of hot water, chilled water, fire water, domestic water, electricity, perimeter security systems infrastructure, etc.

As part of the project, the domestic heat exchanger 'water heaters' were replaced in many of the buildings due to their age and remaining life expectancy. Temporary domestic water heating needs were met with the use of a mobile trailer-mounted hot water production station interfaced with the existing building mains while existing building heat exchangers were replaced with new.

### Project Type

Correctional

### Owner

State of Tennessee Department of Correction

### Construction Cost

\$5 Million

### Project Completion

2014

### Services Provided

Mechanical, Electrical, and Plumbing

## PROJECT EXPERIENCE



## Shelby County Criminal Justice Center and Justice Center Addition Memphis, Tennessee

### Summary

Project was a 3-story, 256 bed facility in downtown Memphis. Design services included mechanical, plumbing, electrical, and structural components of this new construction project. This facility was designed for future vertical expansion of five additional floors and 1,280 more beds. The building's shear walls were designed to withstand the additional forces for a seismic event. The water service, fire main, and sewer system were increased to match the facility's future demand. Additional space was allocated in the building for future equipment that would be needed for water heating, booster pumps, generators, air conditioning equipment, and boilers. The HVAC system includes heat wheels which are used as energy recovery devices to transfer the heat in the exhaust to the outside supplied to the facility. A central water chiller system is designed to provide the lowest operating cost system for the building's air conditioning system. Following construction of the original building, SSR provided engineering design services for the expansion of the facility.



### Project Type

Correctional

### Owner

Shelby County Government

### Construction Cost

\$25 Million

### Project Completion

2001

### Services Provided

Mechanical, Electrical, and Plumbing





**JUVENILE JUSTICE FACILITIES**

**Walnut Grove Juvenile Correction Facilities  
Walnut Grove, Mississippi**

This project was an accredited private facility housing up to 1,000 juvenile inmates, totaling 261,540 SF. The project was completed in 2000 at a construction cost of \$20 million.

**Desoto County Juvenile Justice Center  
Desoto County, Mississippi**

This project was a new 10,465 SF addition to the juvenile facility. The project consisted of demolishing a portion of the existing facility and construction of a new addition. The construction was phased in order to maintain operations. SSR provided civil, mechanical, electrical, plumbing, and fire protection design services.

**Lowndes County Juvenile Detention Facility  
Columbus, Mississippi**

SSR provided full engineering design services for a single-story, 28,000 SF, 120-bed juvenile detention facility and health and human services administration building. The design included security systems, emergency power systems, mechanical, plumbing, and electrical. The project was completed in 2005 at a construction cost of \$3.8 million.

**CORRECTIONAL FACILITIES**

**Tallahatchie County Correctional Center Addition - ETFC/SSR Project  
Tutwiler, Mississippi**

Engineering design for 105,000 SF addition to a medium-security facility on a 149-acre site. The site engineering included a new electrical service, new auger monster, pump station, and force main. The new facilities accommodate 720 inmates in 80 SF cells. The addition included three buildings, two housing units, each with 360 beds and a new medical wing. The project was completed in 2007 with a construction cost of \$32 million.

**East Mississippi Correctional Facility  
Meridian, Mississippi**

This new satellite facility was built to house up to 1,000 inmates in a 260,000 SF facility. The project was completed in 1999 at a construction cost of \$20 million.

**Noxubee County Detention Center  
Macon, Mississippi**

SSR provided mechanical, electrical, and fire protection design and engineering services for a new 54 bed detention facility.

**Lafayette Chancery Building  
Oxford, Mississippi**

SSR provided the design for a 2-story steel frame court house containing approximately 45,000 SF. Design included structural, mechanical, electrical, plumbing, and fire protection. The project was completed in 2002 at a construction cost of \$6 million.

**Yazoo City Federal Prison  
Yazoo City, Mississippi**

This project was a medium security facility housing 1,100 inmates, totaling 495,000 SF. The project was completed in 2003 at a construction cost of \$90 million.



## PROJECT EXPERIENCE



### CORRECTIONAL FACILITIES, continued

#### **Bay County Jail Annex - ETFC/SSR Project Panama City, Florida**

With an average daily population of approximately 900 inmates, the existing Bay County Correctional Facility had far exceeded its rated capacity. The county hired SSR to provide engineering design for a 116,000 SF annex facility for the Bay County Sheriff's Department. The new structure was designed to house 674 inmates and employed the use of both two person cells and dorm type housing pods. The expansion required several other improvements to the facility including a new auger monster to grind and remove trash from the sanitary system and a new pump station. Other improvements included a new house pump to provide proper water pressure to the facility and a new larger laundry area. The project was completed in 2009 at a construction cost of \$30 million. SSR was responsible for mechanical, plumbing, fire protection, and civil engineering design.

#### **Lawrence County Jail Lawrence County, Tennessee**

This project consisted of a multi-story 40,000 SF building to house new inmate areas, kitchen, laundry, and courtrooms on the existing correctional site. The project also included the renovation of parts of the existing building. The project included phasing plans to allow for continuous operation. SSR provided structural, mechanical, plumbing, and electrical design services. The construction cost was \$8 million.

#### **White County Correctional Facility White County, Arkansas**

A full service law enforcement facility, this 124,000 SF structure houses the sheriff's department, circuit and district courts, as well as clerks offices. In addition the facility also has the ability to house a limited amount of inmates and includes full service kitchen and laundry areas. The project was completed in 2007 at a construction cost of \$17 million. SSR was responsible for mechanical, plumbing, fire protection, civil, and structural design.

#### **Forrest City Correctional Institute Forrest City, Arkansas**

SSR completed the design/build of a 500,000 SF medium security prison. The facility is a 1,152 bed prison with complete support, factory, and training classrooms. The project was completed in 2003 at a construction cost of \$86 million.

#### **Forrest City Federal Prison Camp Forrest City, Arkansas**

SSR provided engineering design services for a 95,672 SF prison camp housing 152 inmates. The project was completed in 2002 at a construction cost of \$10.5 million.

#### **Robertson County Correctional Facility Springfield, Tennessee**

This project was a multi-story 500 bed correctional facility addition. The project consisted of new dayrooms, vehicle sally port, kitchen, and laundry facilities. Phasing was required to accommodate existing operations. SSR provided structural, mechanical, plumbing, and civil engineering services. The project was completed in 2009 at a construction cost of \$25 million.

#### **Decatur County Correctional Facility Decatur County, Tennessee**

SSR provided electrical design services for a 17,000 SF addition and a 35,000 SF renovation.



**CORRECTIONAL FACILITIES, continued**

**Crittenden County Jail  
Crittenden County, Arkansas**

SSR provided civil, mechanical, plumbing, and fire protection design for this 7,000 SF classroom addition. The project also included video arraignment rooms and new holding cells.

**Hardeman County Criminal Justice Facility  
Bolivar, Tennessee**

This 72,100 SF facility encompasses 9.5 acres in Bolivar, TN. In addition to the civil design work, SSR provided mechanical, electrical, and plumbing design services for this \$18 million project. The HVAC system was designed with special controls to maintain the proper temperatures with outside air as required by code. The system included dehumidification units which improved the energy efficiency. The facility incorporated judges only parking with controlled access, metal detectors, and security features for visitor control at the entrance and an emergency generator for critical elements. The project was completed in 2008.

**West Tennessee State Penitentiary Loop Replacement  
Henning, Tennessee**

The project scope included energy upgrades and improvements of the existing facility including the installation of a new hot water distribution loop and the replacement of the existing heat exchangers, pumps and cooling towers. The existing hot water distribution system at West Tennessee State Penitentiary is an underground system that is more than 20 years old and has major leaks throughout the system. The design routes the piping above ground, utilizing pre-insulated pipes with a weatherproof jacket, to distribute hot water to each building. Pre-insulated pipes were used to minimize installation time. The boilers produce 210°F water which is delivered to each building via the above ground piping. There is approximately 35,000 LF of pipe, configured in a loop around the facility, used to deliver the hot water. The loop was designed to prevent "branch" piping which could lead to multiple buildings being without hot water in the event of a break, or leak, in a section of pipe. At each building take-off from the main loop there are two shutoff valves, one on each side of the take-off, which can isolate a section of the loop for maintenance while still allowing water to be delivered efficiently to the remaining buildings.

**Northwest Correctional Complex Infrastructure Upgrades  
Tiptonville, Tennessee**

SSR provided mechanical, electrical, and structural engineering for the replacement of two 500 ton chillers and the associated cooling towers and pumps with new 750 ton units. SSR included a phasing plan to allow the facility to remain in operation with minimal shut downs. The project was completed with a construction cost of \$7 million.

**Memphis Police Department, Southeast Precinct  
Memphis, Tennessee**

The project consisted of a 15,200 SF police precinct, a 17,500 SF tactical unit, and a vehicle maintenance building. Services provided included the design of civil, structural, mechanical, electrical, plumbing, fire protection, and fuel dispensing system. The project was completed in 2005 at a construction cost of \$5.7 million.

**Wilson County Jail and Judicial Center Renovation  
Lebanon, Tennessee**

Renovations to existing facility in Wilson County including the inmate housing unit and the judicial and administrative building. The project was completed in 2008 at a construction cost of \$5 million.







## **CORRECTIONAL FACILITIES, continued**

### **Colorado Territorial Prison License Plate Line Upgrade Cañon City, Colorado**

This project provided increased electrical capacity for license plate manufacturing facility at Colorado Territorial Prison. The renovation was complicated by old age of the existing electrical infrastructure in the facility. The schedule was of extreme importance due to the approaching change in license plate format. The project was completed in 2000.

### **Colorado State Patrol Renovations Commerce City, Grand Junction, & Fort Collins, Colorado**

SSR provided mechanical and plumbing design for facilities at three Colorado State Patrol locations. The Commerce City location was a prototype building design that will be sited in numerous locations throughout the state over the next eight to ten years as the Department of Public Safety replaces existing over-crowded buildings or adds new District facilities. The building sites include, on average, 6,840 SF of office space and 7,300 SF of garage space. The patrol area design consists of two ground mounted air-handling units for a total of 22.5 tons of cooling. Special mechanical design considerations had to be taken with the holding cells and property/evidence areas.

### **Brighton Police Station Brighton, Colorado**

This project was a 3-story, 33,310 SF police department and municipal courts building design. This facility houses police offices including interview and processing areas, armory, evidence lab, and booking and holding cells. The municipal courts section of the building includes offices for court clerks, judges, and administration personnel, courtroom, witness waiting room, and a jury deliberation/conference room. Systems designed included mechanical, electrical, plumbing, fire protection, and communications.

### **Sterling Correctional Facility Juniper Valley Cooling Manufacturing Facility HVAC System Upgrades Sterling, Colorado**

SSR provided mechanical engineering services to provide HVAC improvements to the existing 11,000 SF Corrections Industries' warehouse at the Colorado Department of Corrections, Sterling Correctional Facility. The improvements included new chilled water makeup air units with steam pre-heat coils and chilled water air handling units. The project also included new chilled water piping, steam piping, condensate drain piping, and electrical distribution to HVAC units.

### **Centennial Correctional Facility Electrical Power Upgrade Cañon City, Colorado**

SSR provided engineering services for solutions to the corrosive soil conditions at Centennial Correctional Facility. Design recommendations entailed all perimeter exterior lighting circuits to be replaced and relocated to an above ground system. Design also included upgrade of existing transformers to meet higher electrical demands due to the increased use of electrical devices such as computers, printers, etc., and the re-allocation of one upgraded transformer to support all of the control center during power outages or emergencies.

### **Colorado Women's Correctional Facility North Pump house Generator System Addition Cañon City, Colorado**

SSR provided a diesel generator addition for complete back-up power to the North Pump Station. The generator has the capacity to connect the future loads of perimeter lighting and essential control center for the Women's Correctional Facility. An additional pump was also added to the facility.



## **CORRECTIONAL FACILITIES, continued**

### **East Cañon City Prison Complex Generator Installation Study Cañon City, Colorado**

SSR conducted a study for using Colorado Department of Corrections trailer mounted 175 KW generator as a mobile standby source of power for the following locations within the East Cañon City Prison Complex; Four-Mile Correctional Center, Arrowhead Correctional Center, Skyline Correctional Center, and the Pre-Release Center. Each location will have as a minimum the following areas able to be connected to the generator: kitchen, control center (critical loads), administration (critical loads), and the perimeter lighting. The project also included study and design for using one of CDOC's military surplus trailer mounted 185 KW generators as a permanent standby source of power for the Rifle Correctional Center and for the Camp George West at Golden, CO.

### **Buena Vista Correctional Facility Power Distribution Study Buena Vista, Colorado**

Existing overhead and underground high voltage power distribution systems at BVCF were old and unreliable. This facility depended on availability of power for life safety and security systems as well as pumping for domestic water and irrigation systems. Power outages became more frequent as underground cabling aged. SSR provided engineering services including a study of existing conditions, report, and recommendations for replacement of the existing 12.47 kV facility overhead and underground radial feed power system with a fully underground 12.47 kV loop feed system with selective load control to integrate with an existing on-site stand-by power generating system. Several power company issues were studied including primary vs. secondary metering, load shedding, interruptible rate structures, and system reliability.

### **Pueblo Minimum Center Electrical and Emergency Power Systems Study Cañon City, Colorado**

SSR provided an electrical engineering study to design, estimate, and prioritize system replacement for electrical and emergency power systems that are up to 60 years old in Buildings 7, 8, and 10. The main distribution panel, secondary wiring, emergency circuits, auto switch, and generators require replacement to ensure continued/reliable service and eliminate constant interruption.

### **Noble County Correctional Facility Noble County, Oklahoma**

SSR provided structural, mechanical, plumbing, and fire protection services for the county facility.

### **Webb County Correctional Center Laredo, Texas**

SSR provided full engineering services for 512 bed addition to the existing facility. The project included administrative/office additions, kitchen expansion, and medical area renovations. The project was completed in 2000 at a construction cost of \$15 million.

**Brown, Mitchell & Alexander, Inc. (BMA)** is a consulting engineering firm specializing in civil engineering consulting, planning and surveying services for a wide range of clients along the Mississippi Gulf Coast. Established in 1967 as Brown Engineers by Joseph L. Brown, Jr., BMA has earned the reputation as one of the strongest engineering firms on the Mississippi Gulf Coast.



Bill Mitchell joined the firm in 1987 and became president and owner of Brown & Mitchell, Inc. In 2008, leadership and ownership of the firm was turned over to long-time employee Dax Alexander and the name changed to Brown, Mitchell & Alexander, Inc. The name may have changed, but under Alexander's leadership, the firm has maintained the priorities established 50 years ago: to provide quality work and customer satisfaction while building a better Mississippi Gulf Coast.

#### Client Satisfaction Philosophy

Our goal at BMA is to continually exceed our clients' expectations by providing a quality product in a timely manner. Our best advertisement is providing good work and maintaining a solid reputation. BMA has provided continuous service to many of our clients for years, some since the early 1970's. Repeat business is the best indicator and highest compliment for measuring quality work, client satisfaction and value. BMA is sensitive to providing the best value to our clients by working efficiently and eliminating overhead expenses. Our philosophy is reflected in a recent client survey that revealed our services met or exceeded client expectations 99% of the time. In addition, BMA was given the Premier Award for Client Satisfaction. \*



\* Presented by PSMJ Resources, a performance-rating company, and presented in partnership with Client Feedback Tool, which honors A/E/C firms that provide their clients with top quality communication, impressive performance and cost effective solutions.

#### Client Approach

Everyone at BMA strives to provide our clients with projects that are a right fit for the community, within their budgets, while meeting their needs. We don't take the "cut and paste" approach to project design, instead we think creatively and look at the big picture. We encourage our clients to look ahead to the future to ensure the current design or phase meets those future goals and visions.

As engineers, it is our responsibility to provide solutions that create an environment that promotes the well-being of people and overall quality of life while protecting the environment. Our firm has extensive experience surrounding this ideal, including Low Impact Development (LID), Traditional Neighborhood Development (TND) design and Leadership Energy and Environment Design (LEED).

BMA is a proud partner of the Complete Streets Coalition whose goal is to promote improved accessibility along our streets for all users including pedestrians, bicyclists, automobiles and public transportation. For more information on these practices, go to: [www.completestreets.org](http://www.completestreets.org), [www.lowimpactdevelopment.org](http://www.lowimpactdevelopment.org) or [www.usgbc.org](http://www.usgbc.org).

#### Services

We utilize a team concept approach to provide our clients with quality projects that are completed within both budget and time requirements. BMA is built around service and is committed to accountability.

Services our firm provides include:

- Engineering design
- Site selection and analysis
- Technical and economic feasibility studies
- Preliminary engineering studies
- Preparation of technical specifications and construction drawings
- Bidding assistance, construction administration and observation
- Permit preparation and coordination with Federal, State and local agencies
- Boundary, topographic and ALTA surveys
- Coordination with specialized consultants
- Operation and maintenance procurement services
- Water and sewer rate analyses
- Environmental services including: environment permitting, wetland delineations, storm water permitting, environmental due diligence assessments, threatened and endangered species surveys, NEPA compliance and aquatics surveys
- Construction/project management







**BROWN, MITCHELL  
& ALEXANDER, INC.**  
CONSULTING ENGINEERS



## Profile

With nearly 50 years of experience in providing a full spectrum of civil design services, BMA offers surveying and regulatory permitting through careful contract administration and construction observation. We have been involved in the study and design of both public and private projects with a broad array of varying scopes.

BMA has provided services for a broad range of projects, including:

- Water, sewer and storm drainage improvements
- Wastewater treatment facilities
- Roadway, highway and pathway improvements
- Beach erosion and renourishment projects
- Industrial parks
- Retail developments
- Residential master planned communities
- Gaming developments
- Golf courses
- Marinas, piers and waterfront projects
- Recreational complexes
- Commercial developments

BMA has extensive experience working on State and Federally-funded projects of various scope and complexity and we are very familiar with grant preparation procedures, regulations and the deadlines associated with such projects. Our experience with projects that have multiple funding sources has given us insight in dealing with funding that places a variety of requirements on a project.

We have had great success with projects involving the coordination of multiple agencies including:

- Mississippi Department of Environmental Quality
- Federal Aviation Commission
- Federal Highway Administration
- Mississippi Department of Transportation
- Mississippi Department of Health
- Mississippi Department of Marine Resources
- U.S. Army Corps of Engineers
- Mississippi Development Authority
- FEMA/MEMA

We have an Environment Specialist/Marine Biologist on staff, allowing BMA to assist with such issues as wetland permitting, environmental site assessments, storm water permitting and other environmental services. We are very familiar with the requirements of various Federal and State regulatory agencies including the U.S. Army Corps of Engineers, Mississippi Department of Marine Resources and the Mississippi Department of Environmental Quality. This assists our design team while guiding our clients through the sometimes complex regulatory process.

Bill Mitchell is a Certified Construction Manager which allows our firm to provide construction/project management services to our clients in order to advise and manage all aspects of a project, contributing to the control of costs and assuring successful completion of a project within the scheduled time.

## Employee Experience & Technology

An engineering firm is only as good as its personnel. With senior level managers supervising all aspects of the firm, their depth of knowledge and experience is constantly being taught to the new members of our team as we grow. Our employee retention says a lot about our team and work environment. Our employees on average have worked for BMA twelve years and many employees have been with the firm for fifteen years or more. BMA makes every attempt to seek out and employ the most qualified individuals (firms) for all available positions (work) and to provide equal employment opportunity for all applicants and employees (and sub-consultants).

**Engineering Staff** - The Engineering Department consists of engineers of all experience levels from senior staff to engineer interns. All of the engineering staff live along the Mississippi Gulf Coast, most of which grew up in the area. All BMA Engineering Staff have a wealth of knowledge relative to construction practices and regulations along the Gulf Coast. We feel our familiarity with this area gives us better insight to our client's needs and allows us to better assist our clients with providing the services they need. Our engineering staff strives to exceed our client's expectations. We are cognizant of the ever changing engineering environment and continue to learn and adapt to new technology and construction materials/techniques. The engineering staff maintains the necessary certifications required as listed on the individual resumes.



**Construction Administration** - Our field representatives are very experienced and are familiar with the latest construction techniques. The Resident Project Representatives ensure that the requirements set forth in project plans and specifications are followed by the contractors in the field and accurately document day to day field activities. We have field personnel on staffs that are certified in Erosion Control Inspection and Design and Operation of Work Zone Traffic Control. On average, our construction administrative staff has over thirty years of experience.

**Surveying Services** - Our survey department has a complete survey staff available, with a full time Professional Licensed Surveyor, survey crew, and licensed UAV pilots. They utilize the latest advances in surveying technology including a Network RTK systems and Unmanned Aerial Vehicle (UAV) or "Drone" surveying. Our equipment provides sub-centimeter accuracy that is subject to minimal degradation by weather and reduces length of time in the field. Our range of equipment and expertise allows us to undertake survey work from tight urban areas to mapping very large parcels with limited accessibility such as wetlands, shorelines and hazardous environments. Our software and technology are fully compatible with AutoCAD, allowing the interchange of information with clients and sub-consultants. We have the right tools and experienced personnel to meet any situation.

**Drafting/CADD Staff** - The Drafting Department consists of CADD Operators & Designers with experience in drainage, water and sewer improvements, roadway improvements, site development, landscaping and marine projects (harbors, piers, boat launches). BMA keeps up with the latest CADD and modeling software available, which includes AutoCAD and Civil 3D/Storm & Sanitary Sewer Analysis and SiteOps. BMA also has the latest format printers, plotters, and large format scanners for preparation of construction documents. Utilizing state of the art computer software and hardware, BMA's team of designers and CADD Operators have the ability to work together in order to maximize BMA's resources to provide the best quality product for our clients. On average, our CADD Designers have over 30 years of experience in the drafting field.

#### Office Locations

BMA currently has three (3) offices conveniently located in Gulfport, Biloxi, and a satellite office in Pascagoula, MS. We will assign staff accordingly to be most effective for the project location and scope. Resumes of the key personnel to be assigned to this project are included in this proposal.

**bma** BROWN, MITCHELL  
& ALEXANDER, INC.  
CONSULTING ENGINEERS

CELEBRATING  
**50**  
YEARS



**Dax Alexander, PE**  
**President**  
Civil Engineer

Professional Engineer:  
Mississippi (PE #14208) / 1999  
Louisiana (PE #37088) / 2012  
Alabama (PE #32625) / 2012  
24 Years of Experience



**Benjamin Smith, PE**  
**Vice President**  
Civil Engineer

Professional Engineer:  
Mississippi (PE #18333) / 2008  
15 Years of Experience



**Nick Gant, PE**  
Civil Engineer

Professional Engineer:  
Mississippi (PE #26307) / 2015  
Alabama (PE #34883) / 2014  
8 Years of Experience



**Mark Otto, PS**

Professional Land Surveyor

Professional Surveyor:  
Mississippi #2868) / 2002  
24 Years of Experience



## CAPABILITIES STATEMENT

Our mission is to develop designs for commercial food service facilities that provide the owner/operator(s) with a combination of quality equipment, functional space allocations and work flow within a designated budget. With more than 60 years experience in institutional and healthcare foodservice operations, facility design, equipment specifying, equipment installations and quality control, we offer a blend of knowledge and experience that many other companies wish for.

## MISSION

To develop designs for commercial food service facilities that provide the owner/operator(s) with a combination of quality equipment, functional space allocations and work flow within a designated budget.

To provide the architect, in a timely fashion, with a comprehensive food service plan that all but eliminates questions or concerns. To accomplish this goal through interaction and communication with the architect and the project owner/operator. The final design plan to include a written explanation of the design process, bid documents and drawings of professional quality and distinction.

## SERVICES GUIDE

- Food Service Facilities Design
- Equipment Specification
- Bid Documents
- Budget Estimates
- Bidder's Submittal Review
- Completed Project Inspection
- Facility Equipment Floor Plan
- Detailed Equipment Schedule
- Dimensioned Plumbing Rough-Ins
- Dimensioned Electrical Rough-Ins
- Details of Walk-In(s)
- Details of Hood System(s)
- Details of Custom Fabrication



## QUALIFICATIONS



Bill Murray

- Foodservice Equipment Dealer and Project Manager for 27 years
- 40 years of foodservice facility design and equipment specification experience
- 16 years as an Independent Foodservice Design Consultant



Karen Corban

- 21 years experience in food service administration
- 4 years experience as a clinical dietitian
- 14 years as a food service design consultant with Murray Corban Food Service Design Consultants
- Member of advisory boards of the Nutrition and Hospitality Management at The University of Mississippi and The University of Mississippi Buildings Grounds and Renovations Committee
- Former Instructor of National Food Service Management Institute
- Adjunct Professor at The University of Mississippi in Hospitality Management
- Formerly worked for the Mississippi Department of Health reviewing jail and prison foodservice operations

## PROJECTS DESIGNED

Hospitals, Correctional Facilities, Schools, Colleges, Casinos, Restaurants, Churches, Hotels, Convention Centers, Convenience Stores, and Government Facilities





# CHRISTIAN PREUS

Landscape Architecture

## ABOUT

Christian Preus Landscape Architecture, PLLC is an award winning, landscape architecture, campus planning and urban design firm licensed in Alabama, Mississippi, and Louisiana, with offices in Fairhope, Alabama and Ocean Springs, Mississippi.

As a progressive firm with over a decade of consulting experience, CPLA has had the privilege of designing some of the most premiere projects across the Southeast that emphasize both urban and sustainable design practices. Our portfolio includes signature projects such as the MGM – Minor League Baseball Stadium, the Pascagoula Riverfront, Promenade, and Lighthouse Park, the GRAMMY Museum® Mississippi, World War II Memorial, and traditional neighborhood developments Adelaide (Starkville, MS) and Florence Gardens (Gulfport, MS).

CPLA has two major areas of expertise that are valuable to developers, academic institutions and cities.

**PLANNING:** Our planning abilities allow us to study not just the project site, but the context and how program elements relate and effect the surrounding community. We evaluate the circulation, the structure of architecture and the placement of each building, and the organization of the landscape and open space. This holds true in any of our campus, park or neighborhood plans.

**GREEN INFRASTRUCTURE:** With growing demands for clean water, and on site stormwater retention, our knowledge of low impact development strategies has proven valuable for developers and cities. These practices allow for on site storage to be broken up in smaller scaled systems that create more usable land for development or active open space. By utilizing the landscape as a living system, we are able to work with engineers and naturalize the process of stormwater facilities in urban settings.

With a highly gifted team including founding principal Christian Preus (pronounced PROYCE) PLA, ASLA; Cory Gallo PLA, LEED (master campus planner and landscape architect), and Oliver Preus (designer), the firm excels in professionalism, progressiveness, and an overall focus on client satisfaction, we take pride in our ability to successfully work both as the project lead and as a team consultant.



[www.christianpreus.com](http://www.christianpreus.com)



With approximately 37 highly qualified professionals on staff, Eley Guild Hardy would be able to provide the proper staffing necessary to successfully complete the architectural design services for Harrison County Board of Supervisors quickly and cost effectively through every phase of design and construction.

Eley Guild Hardy Architects proposes to be your "one-stop-shop" for professional services. Our firm will implement a "partnering" approach to the design of your project consisting of highly qualified personnel that offer the foremost experience in their field of expertise. This team will be comprised of design professionals including architects, civil and structural engineers, mechanical engineers, electrical engineers, fire protection, telecommunications, registered distribution communication designer, interior designers and others.

All of these design disciplines will be under the control of the Design Team Project Manager - Mark Lishen, AIA, LEED AP. The current capacity of Eley Guild Hardy and

our consultants allows for design and production of your project to meet the required deadlines. With additional design professionals available, staffing your projects to accomplish project completion on schedule will be a top priority.

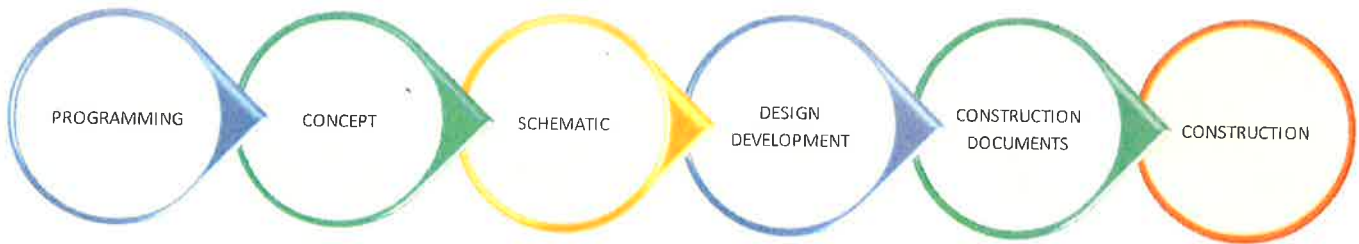
As shown in the table below, Eley Guild Hardy Architects has assembled a team with the available capacity of key disciplines need for this contract.

With offices in Biloxi, and Jackson and we are one of the largest architectural firms in the state of Mississippi. Eley Guild Hardy is fully capable of allocating the resources needed to design this project and meeting any schedule established by the Harrison County Board of Supervisors.

This team-wide capacity provides our team with the ability to sustain loss of key personnel while accomplishing the work within required time limits.

Staff Availability	EGH Architects	ETFC Architects	R & N Systems	Smith Seckman Reid	BMA Engineers	Murray Corban	Christian Preus Landscape Architects
Administrative	5	2	1		4		
Intern Architects	12	4					
Architects	13	4					
Interior Designers	2	1					
Civil Engineers					7		
Structural Engineers				4			
Mechanical Engineers				50			
Electrical Engineers				28			
Plumbing & Fire Protection Designers				30			
Telecommunications (RCDD)							
Fire Protection Engineers				1			
Construction Administration	3	1	1		3		
Specification Writers	1				2		
Senior CAD Techs		3			3	1	
Landscape Architects							3
Security Specialists			6				
Environmental Scientists					1		
Surveyors					2		
Foodservice Design Consultants						2	
<b>TOTAL</b>	<b>37</b>	<b>15</b>	<b>7</b>	<b>113</b>	<b>22</b>	<b>3</b>	<b>3</b>





**Good juvenile facility design derives largely from understanding** the needs of those who will use the facility: the young people who reside there and the agencies responsible for the youth in their care. It is not simply a matter of creating a given amount of space or a handsome facade. Rather, good design depends on developing space that is responsive to resident and staff perceptions and behaviors, to the demands of daily programming, and to the need for safety, security, and positive management at all times.

Above all, a good facility design must take into account the overriding premise of the juvenile justice system, i.e., effective intervention in the lives of youth. Custodial care is often the last resort in a series of interventions offered by the justice system. It may also be the last chance to redirect youthful behavior before a life of serious crime ensues. To this end, it is essential that spaces, programs, and staff combine to create a residential environment that encourages positive resident response and cooperation - and a willingness to take advantage of opportunities.

Juvenile facilities, in recent years, have tended to assume more of the character of adult jails, with larger capacities, bigger housing units, and increasingly restrictive construction materials and hardware. But for most justice system professionals, juvenile facilities are not jails. They are safe places that, in the best circumstances, offer some hope for a better future for the youth they serve.

Our consultants, ETFC Architects, R&N Design, and SSR all understand the intricacies of detention facility design and will work with EGH Architects to accomplish the goals and objectives for your new facility.

Planning and designing a building that works well, that fulfills the needs of all those who will use it, requires a comprehensive understanding of all the operational goals envisioned for the facility. In the case of secure residential facilities for youth, it further demands a

clear understanding of the activities that will take place throughout the day, the way residents will move through the building, and the space required to support all programs and services.

The first step in the facility planning process is operational/architectural programming. Operations programming focuses on defining the mission of the facility, operational priorities (management methods, staff-to-resident ratios), required programs, and potential activity schedules.

When the scope of the project is approved or modified in response to cost or operational concerns, diagrams illustrating spatial adjacencies (the desired connections between spaces) are completed as the basis for conceptual design and all subsequent design efforts.

After programming, the architectural design process involves five separate phases: concept design, schematic design, design development, construction documents and construction administration. Our team would envision the following schedule for the design and construction of the Harrison County Juvenile Detention Center:

**Programming:** 30 - 60 days (depending greatly on the response and input of the Owner).

**Concept:** 30 days

**Schematic:** 30 days

**Design Development:** 60 days

**Construction Documents:** 120 days

**Construction:** 16-18 months (largely depends on the complexity of the design, but with the Security Electronics and Controls necessary for this type of facility, this does add some additional time to a normal construction schedule).