

RECEIVED
JUN 26 2017

BY: B.G. / AS Chaney, Clerk
D.C.

10:08 AM

JBHM ARCHITECTURE REQUEST FOR QUALIFICATIONS FOR PROFESSIONAL SERVICES TO DESIGN AND CONSTRUCT A JUVENILE DETENTION CENTER IN HARRISON COUNTY, MISSISSIPPI

Harrison County Chancery Clerk's Office
First Judicial District Courthouse
1801 23rd Avenue
Gulfport, Mississippi

JBHM Architecture

JBHM ARCHITECTURE

REQUEST FOR QUALIFICATIONS FOR: PROFESSIONAL SERVICES TO DESIGN AND CONSTRUCT A JUVENILE DETENTION CENTER IN HARRISON COUNTY, MISSISSIPPI

Harrison County Chancery Clerk's Office
1801 23rd Avenue
Gulfport, Mississippi



JBHM Architecture

JBHM Architects, PA
104 3rd Street South
Columbus, Mississippi 39701

662.329.4883
FAX 662.329.2725
EMAIL info@bhm.com

June 26, 2017

Harrison County Chancery Clerk's Office
Chancery Clerk's Office
1801 23rd Avenue
Gulfport, Mississippi

RE: JBHM ARCHITECTURE REQUEST FOR QUALIFICATIONS FOR: PROFESSIONAL SERVICES TO DESIGN AND CONSTRUCT A JUVENILE DETENTION CENTER IN HARRISON COUNTY, MISSISSIPPI

Dear Chancery Clerk and Members of the Selection Committee:

Enclosed you will find the Response to your Request for Qualifications from JBHM Architects for the Design and Construction of a Juvenile Detention Facility for Harrison County. We are excited about this opportunity, as JBHM will be instrumental in designing the solutions for the Harrison County Juvenile Detention Facility. You will find extensive information in our proposal regarding facilities that have been completed.

- Hinds County Juvenile Detention Facilities Analysis
- Rankin County Juvenile Justice Center
- Lowndes County Juvenile Detention Center
- Lee County Juvenile Detention Center
- Lowndes County Adult Detention Center
- Lee County Adult Detention Facility
- Lee County Justice Center

Thank you for allowing JBHM to present our qualifications. Please contact me at any time to discuss your project, as well as any questions you may have regarding our proposal.

OFFICES
Biloxi, C.A.
Columbus
Jackson
Tupelo

Sincerely,



Joey Henderson, AIA, NCARB
Principal-In-Charge



ARCHITECTURE
PLANNING
LANDSCAPE ARCHITECTURE
INTERIOR DESIGN
GRAPHIC DESIGN
PROGRAM MANAGEMENT

PRINCIPALS
JOSEPH S. HENDERSON, AIA
RICHARD H. MCNEEL, AIA
WILLIAM M. LEWIS, AIA

Table of Contents

JBHM Architecture Request For Qualifications For: Professional Services
To Design And Construct A Juvenile Detention Center In Harrison County, Mississippi

Letter of Interest 1

Qualifications

Firm Profile 3

Site Presence 4

Project Team 5

Resumes 6

Experience 12

Capacity for Performance

Available Staff 24

Estimated Timeline 25

Firm Profile

JBHM Architecture

Founded in 1970, JBHM Architects, P.A., has maintained a goal for over 40 years to provide leadership based on the basic principles of integrity, hard work, and vision. We are dedicated to making a difference through research and listening to the client's vision.

We employ award-winning architects, designers, and highly skilled technical personnel. The recognition of our team for excellence in design has been received through over 50 design awards from the American Institute of Architects (AIA), the American Society for Interior Design (ASID), the International Interior Design Association (IIDA), and various other professional organizations.

In addition to basic Architectural services, we provide other services within JBHM to make our firm a holistic service provider. We provide efficiency and simplicity to the whole design process ... more services under one roof.

- **Architecture**
- **Planning**
- **Landscape Architecture**
- **Interior Design**
- **Program Management**

We consider our clients an important part of our team. Over time we have learned their input is critical to the success of the project and will value your input as a key team member throughout the design process.



Long Beach City Hall

Site Presence

Our experience shows us that a Project Manager who is consistently on location and whose office is close in proximity to the project site is a contributor to overall client satisfaction. JBHM Architects has four offices located in Mississippi.

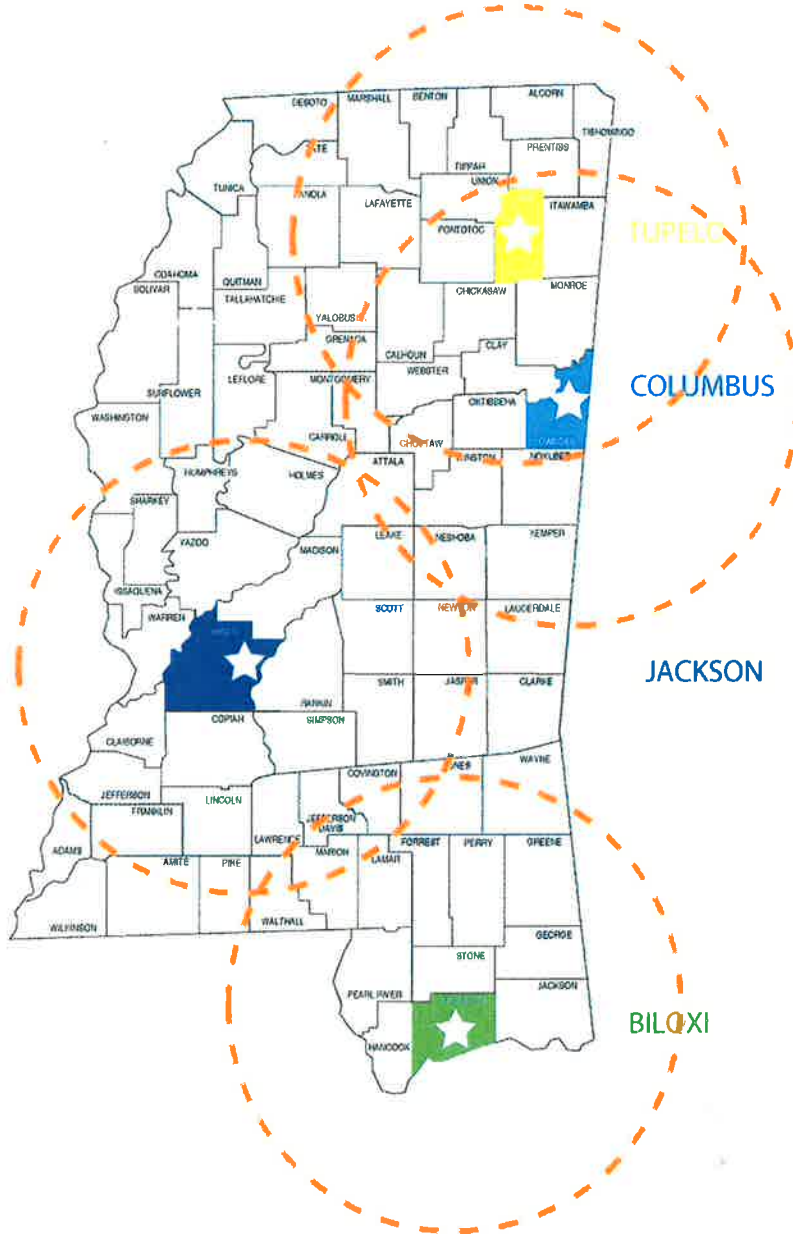
JBHM HEADQUARTERS

308 E Pearl St., Ste. 300
Jackson, Mississippi 39201
Office (601) 352-2699

Tupelo
105 Court Street
Tupelo, Mississippi 38804

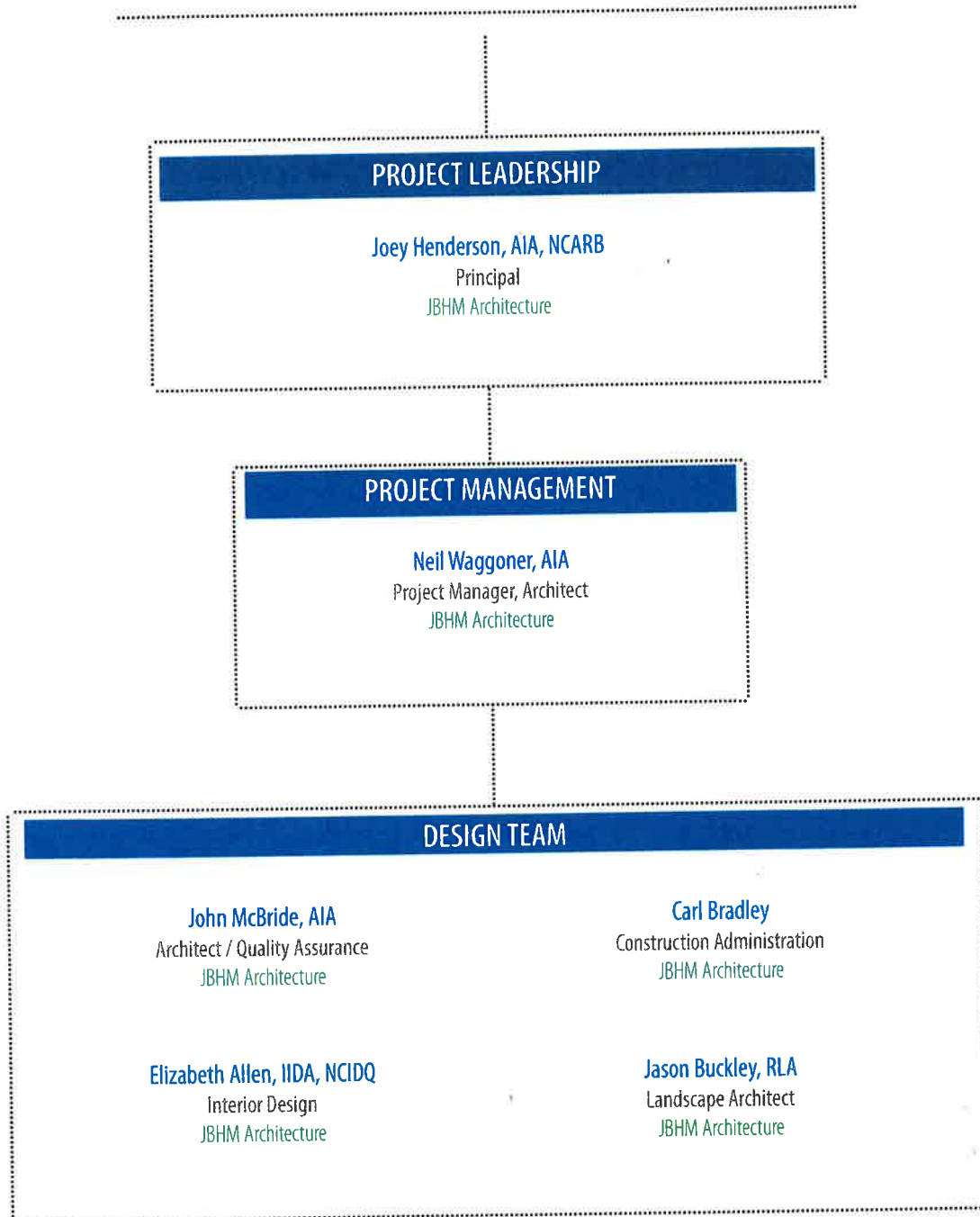
Columbus
104 3rd Street South
Columbus, Mississippi 39701

Biloxi (C.A. Services)
2548 Beach Blvd., Suite 200
Biloxi, Mississippi 39531



Project Team

Harrison County Juvenile Justice Center





Joey Henderson, AIA, NCARB

Principal-in-Charge
JBHM Architecture



Joey Henderson brings 32 years of professional experience to the firm. He serves as Principal, a role in which he is responsible for ensuring total coordination of all design disciplines from the initial phase of the project. Joey focuses on education and industrial arenas. He has teamed with developers focused on providing early childhood education facilities across the country.

Education:

Vanderbilt University, Engineering
Mississippi State University, Bachelor of Architecture

Registrations:

Architecture: Alabama No 4113, Georgia No. 6588, Mississippi No. 2281, Missouri No. 2001023627, South Carolina No. 6377
NCARB No. 31226

Professional Affiliations:

American Institute of Architects - Public Relations Committee
Council of Educational Facility Planners International - Member
LINK Board Member
Fellowship of Christian Athletes Past Board Member
Annunciation of Catholic School Board Member 2001-2004

Project Experience:

Juvenile Justice Center, Rankin County
Juvenile Detention Facility, Lowndes County
Adult Detention Center, Lowndes County (2 Housing Pods, 144 Cells, 288 Beds)
Juvenile Detention Facility, Lee County
Adult Detention Facility, Lee County (Single Housing, 6 Units, 150 Beds)
Community Work Center, Noxubee County (Design for inmates of minimum offender, dormitory setting, direct/indirect supervision)
New Justice Court, Lowndes County
Pickens County Judicial Center, Carrolton, Alabama
Police Station, City of Amory
City Hall, City of Amory
Lamar County Judicial Center, Vernon Alabama
Issaquena County Jail, Post-Occupancy Evaluation
Prototype Detention Facilities for BRG, Austin, Texas (750-1,000 Beds)
Marshall County Jail (Consultant to Elliott Britt)



Neil Waggoner, AIA

Project Manager, Architect

JBHM Architecture



Neil Waggoner has begun an impressive portfolio of experience. His professional experience includes the design and renovation of a variety of projects, including numerous educational, healthcare, and municipal facilities. His responsibilities are to manage projects from a programming stage thru schematic design development, construction documents, construction administration and to completion. Neil is involved with clients at early stages of programming to ensure that the project exceeds the clients' expectations when completed.

Education:

Mississippi State University, Bachelor of Architecture

Registrations:

Architecture: Mississippi No. 4294

Project Experience Includes:

- Lee County Juvenile Detention Center
- Lowndes County Juvenile Court
- Lowndes County Juvenile Health & Human Services
- Lee County Detention Facility
- Lowndes County Justic Court
- Lowndes County Courthouse Renovations
- Lowndes County E911 Facility Addition and Renovation
- City of Louisville, Tornado Safe Room, Community Shelter
- City of Gulfport, New Recreation Center
- Bay St Louis Waveland School District
- Harrison County School District, in association with Eley Guild Hardy
- Pass Christian School District
- Pascagoula-Gautier School District
- Boys and Girls Club of Columbus
- Tupelo Aquatic Center
- Gaston Point Recreation Center, Concession Building Pavilion
- Department of Leisure, New Recreation Center, Gulfport
- Port of Gulfport, West Pier Facilities, Neel-Schaffer as Prime



John McBride, AIA
Architect, Quality Assurance
JBHM Architecture



John McBride joined JBHM in 2005. He has a wide range of professional experience on a variety of facilities such as, institutions of higher learning, governmental, and public facilities, as well as residential. His primary responsibilities are document production and project man-agement. John's understanding of the intricate aspects of architectural and engineering design is an added strength to our team.

Education:

Bachelor of Architecture, Mississippi State University

Professional Affiliations:

AIA

Project Experience:

Rankin County Juvenile Justice Center

City of Long Beach, City Hall

MDOT Shop Complex, Traffic Management Control Center

Hinds Community College, Riggs-Virden Residence Hall

Hinds Community College, Allen-Dukes-Whitaker Residence Hall

University of Mississippi, New South Campus Recreation and Transportation Building

Pascagoula-Gautier School District, Athletic Facilities

Pascagoula-Gautier School District, Classroom Improvements

Pascagoula-Gautier School District, Additions and Renovations

Pascagoula-Gautier School District, War Memorial Stadium Improvements

Pass Christian School District K-8

Tupelo School District, Security Improvements to Tupelo Campuses

Bomgar Headquarters, Tenant Improvements, Ridgeland

Department of Leisure, New Recreation Center, Gulfport

City of Jackson, ADA Improvements

Mississippi National Guard, Mobile Radar Support Facility

Mississippi Industries for The Blind, Interior Improvements

Department of Veterans Affairs, Post Traumatic Stress Disorder Unit

Tupelo Aquatic Center



Carl Bradley

Construction Administration
JBHM Architecture



Carl Bradley has experience in contract administration/inspection, project scheduling, and quality control responsibilities. Through his hands-on experience, ranging from Project Manager and Soil & Concrete Technician to Chief of Quality Control, he is intimately familiar with the procedures and requirements for field quality control and documentation. He brings to this project a high degree of management skills, construction knowledge, and negotiation and mediation skills coupled with his technical knowledge and "people skills." His experience gives him the ability to assist in managing your project in such a way that it will be completed on time and in budget.

Education:

University of Southern, Bachelor of Science, Athletic Administration and Coaching/Health Physical Education
University of Southern, Masters Degree, Educational Administration

Professional Affiliations:

AA Certificate for School Administration
International Interior Design Association (IIDA)

School District Project Experience Includes:

City of Long Beach, City Hall
City of Long Beach Fire Station No. 2, FEMA 361, Emergency Operations Center
Pass Christian Fire Station
Moss Point Fire Station No. 1, FEMA 404, Wind Retro-Fit
Moss Point City Hall, FEMA 404, Wind Retro-Fit
City of Gautier, City Hall Repairs
City of Gulfport, New Recreation Center
City of Moss Point, River Walk
Long Beach Town Green
Help & Hope Foundation, Childcare Center, Pass Christian
Qatar Boys and Girls Club, Pass Christian
Moss Point School District, Additions and Renovations
Pascagoula-Gautier School District, Hurricane Katrina Renovations (Disaster Relief)
Pascagoula-Gautier School District, Additions and Renovations
Pass Christian School District, K-8 Building
Marsha Barbour Community Center
Harrison County School District, New High Schools, Joint Venture with Eley Guild Hardy



Elizabeth Allen

Interior Design

JBHM Architecture



Elizabeth graduated with a BA degree in Interior Design from Marymount University in 2004. She also holds degrees in public relations and communications. With 12 years of experience in commercial interior planning and design, Elizabeth has completed numerous interior projects for public, corporate, and government facilities.

Education:

Bachelor of Architecture, Mississippi State University, NAAB Accredited

Registrations:

NCIDQ No. 024058

IIDA

Project Experience:

Rankin County Juvenile Justice Center

City of Long Beach, City Hall

City of Long Beach Fire Station No. 2, FEMA 361, Emergency Operations Center

Moss Point Fire Station No. 1, FEMA 404, Wind Retro-Fit

Moss Point City Hall, FEMA 404, Wind Retro-Fit

City of Clinton, Police Station Expansion

City of Gautier, City Hall Repairs

City of Kosciusko, Police Station Renovations

Mississippi Department of Revenue, Tenant Improvements, Tenant Fit Out

Entergy DOC Operations & Distribution Center, Emergency Operations Center

Hinds Community College, Riggs-Virden Residence Hall

Hinds Community College, Allen-Dukes-Whitaker Residence Hall

Pascagoula-Gautier School District, Athletic Facilities

Pass Christian School District K-8

Bomgar Headquarters, Tenant Improvements, Ridgeland

Department of Leisure, New Recreation Center, Gulfport

City of Jackson, ADA Improvements

Mississippi Industries for The Blind, Interior Improvements

Department of Veterans Affairs, Post Traumatic Stress Disorder Unit

Tupelo Aquatic Center



Jason Buckley, RLA

Landscape Architect

JBHM Architecture



Jason Buckley joined JBHM's Land Planning Group in 2007. He has 21 years of experience in the field, and has developed expertise in master planning and education. Jason's responsibilities include land planning, conceptual site studies, planting design and construction documents.

Education: Bachelor of Landscape Architecture, Mississippi State University

Registrations: Landscape Architect

Project Experience:

Rankin County Juvenile Justice Center

City of Long Beach, City Hall

City of Long Beach Fire Station No. 2, FEMA 361, Emergency Operations Center

Moss Point Fire Station No. 1, FEMA 404, Wind Retro-Fit

Moss Point City Hall, FEMA 404, Wind Retro-Fit

City of Clinton, Police Station Expansion

City of Gautier, City Hall Repairs

City of Kosciusko, Police Station Renovations

Tornado Safe Room, Community Shelter, Louisville

Oktibbeha County Emergency Management, Emergency Operations Center / 911 Call Center and Community Shelter

Entergy DOC Operations & Distribution Center, Emergency Operations Center

MDOT Shop Complex, Traffic Management Control Center

Pascagoula-Gautier School District, War Memorial Stadium Improvements

Pascagoula-Gautier School District, Athletic Facilities

Pass Christian School District K-8

D'Iberville High School, Harrison County School District, Joint Venture with Eley Guild Hardy

West Harrison High School, Harrison County School District, Joint Venture with Eley Guild Hardy

Department of Leisure, New Recreation Center, Gulfport

Art Garden At The MS Museum of Art, Jackson

Marsha Barbour Community Center

City of Long Beach, Town Green

City of Moss Point, River Walk

City of Bay St. Louis, Splash Pad

Hinds County Juvenile Detention Facilities



Henley-Young Juvenile Justice Center



Oakley Youth Development Center

Hinds County is under a federal consent decree concerning the existing juvenile system. JBHM is currently working with Hinds County and the Department of Justice by performing an analysis of the existing Juvenile Detention Facilities and propose possible solutions.

Locations include:

- Henley-Young Juvenile Justice Center
- Oakley Youth Development Center

Rankin County Juvenile Detention Facility

Rankin County, Mississippi



Rankin County Juvenile Justice Center combines the administrative and intake activities of a juvenile justice facility with a secure, 24/7 supervised detention housing unit for a maximum of 84 juvenile detainees. There are two main components of the structure.

The Administrative component is constructed of steel frame with metal studs and brick veneer. This portion includes a courtroom, judge's chambers, probation, counseling and other administrative offices. An intake area includes the secure receiving, processing, shower, holding, detox and minor medical treatment areas which support the receiving of a juvenile detainee from the community, and then safely preparing him or her for a stay in the housing unit. The average stay on site for detainees is four days or less.

The housing component is octagonal in shape and constructed of a more secure concrete masonry unit and brick veneer structure. Forty two detainment units are arranged around a central control area and divided into 7 sections, including one day-room and 6 cells each.

Lowndes County Juvenile Justice Complex

Columbus, Mississippi



The scope of the project included combining all juvenile and support facilities by converting an old warehouse space into a working juvenile facility. The facility houses a juvenile court, judges chambers, court clerk and reporter, as well as a detention administrator and eight counselors. The facility also contains classroom space, contact and non-contact visitation and multi-purpose areas. The 30 person detention area was broken into four classrooms for status and non-status women. The cells were sized for double occupancy to accommodate activities as well as dining. Food is prepared off site and catered to the facility. The intake/release area includes a holding cell, shower area, toilet, and property storage. The project also includes a secure outdoor recreation yard.

Lee County Juvenile Detention Facility



Lee County Juvenile Detention Facility program includes: intake / holding areas, administration, 14 beds for men, 8 beds for women, 1 observation cell, laundry, non-contact visitation and recreation, sited to share kitchen facility with adult jail / juvenile are separated sight and sound from adults.

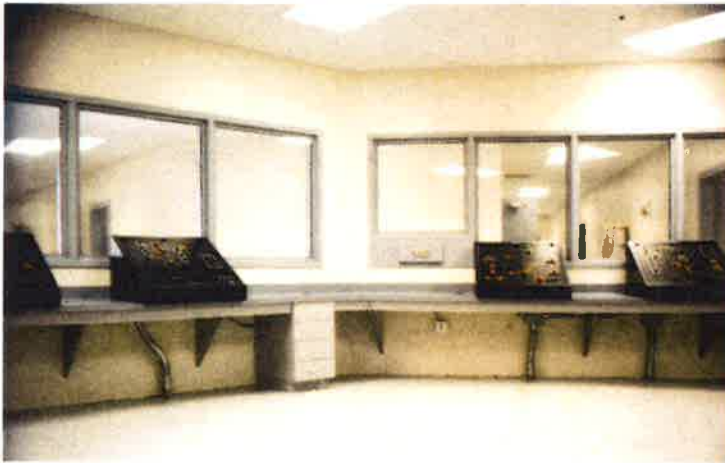
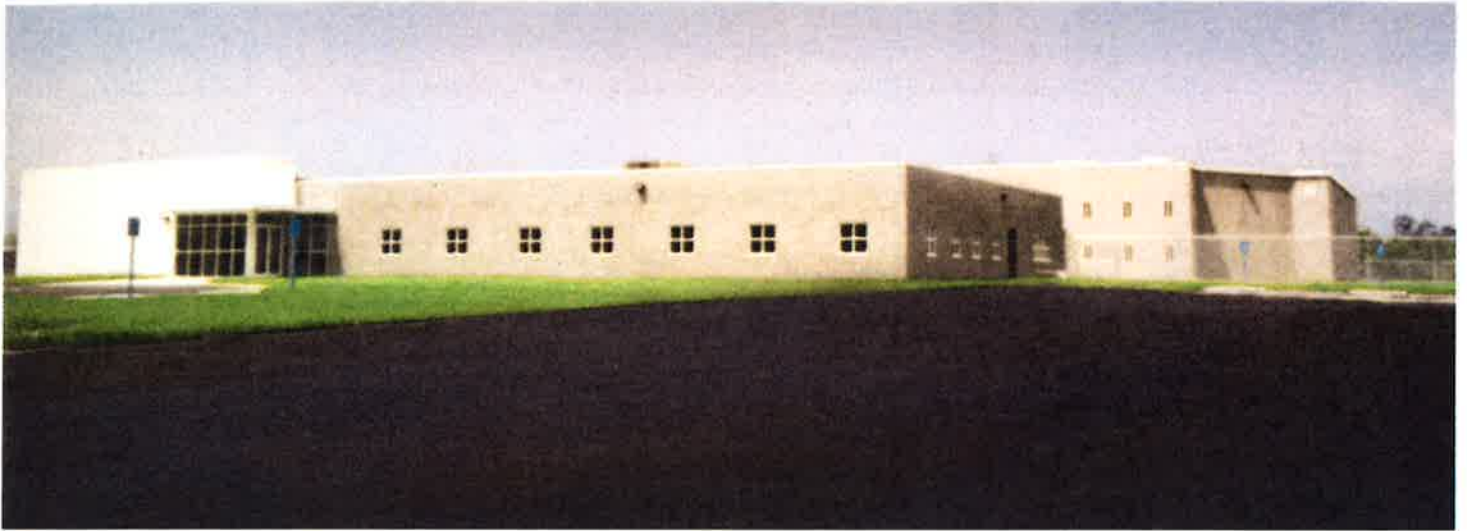
Lowndes County Adult Detention Center

Columbus, Mississippi



Lowndes County Jail was designed in accordance with American Correctional Association (ACA) guidelines. The overall design reflected two housing pods of 72 cells each capable of double bunking (144 cells, 288 beds total). Each pod is divided into six housing units containing twelve cells. Each housing unit was designed for segregation according to male/female, inmate classification, and/or local or state inmate. The scope of this project includes law enforcement facilities to accommodate administrative, investigative, patrol and support activities of the County Sheriff's Department, as well as a detention facility of 288 double bunk inmate beds. The role of the project team was to develop a master facility program for the new complex, as well as complete design and construction administration services. The Lowndes County Adult Detention Facility provides for Detention Administration, Receiving and Release, Housing, Visiting, Recreation, Canteen, Program Services, Laundry, Maintenance areas in the detention area; and Sheriff's Administration, Criminal Investigations, Patrol, Process and Transport Divisions and Staff Support areas in the Law Enforcement Operations portion of the facility.

Lee County Adult Detention Facility



This was a design build project with Mantech, a government contractor and a local contractor, Copeland & Johns. In 1995 Congress authorized a two year lease for a Criminal Information Center for the Mississippi Department of Public Safety. Copeland & Johns financed the project, and then leased the facility to the Mississippi Department of Public Safety. The Criminal Information Center houses the Gulf Coast HIDA, AFIS, Sex Offender Registry, the Mississippi Bureau of Investigation Criminal History, the Mississippi Bureau of Narcotics and a communications section.

Lee County Justice Center



The design of the facility required careful attention to meeting the needs for state of the art functional requirements housed within the historical character of the 1903 courthouse across the street and other adjacent buildings in the historical district of downtown Tupelo. The Lee County Justice Center provides for the courtroom and office needs of the Chancery court, Circuit court, County court, Youth court and Board of Supervisors. Seven courtrooms are available for expediting hearings, trials, and other county government matters.

Dept. of Public Safety Criminal Information Center



This was a design build project with Mantech, a government contractor and a local contractor, Copeland & Johns. In 1995 Congress authorized a two year lease for a Criminal Information Center for the Mississippi Department of Public Safety. Copeland & Johns financed the project, and then leased the facility to the Mississippi Department of Public Safety. The Criminal Information Center houses the Gulf Coast HIDA, AFIS, Sex Offender Registry, the Mississippi Bureau of Investigation Criminal History, the Mississippi Bureau of Narcotics and a communications section.

City of Tupelo Police Station Command Center



The owner appointed a working committee of both the owner and a user which provided input in direction and made recommendations in regards to the operations and design of the new facility. Additional information regarding the project scope was also refined in touring major facilities. These tours involved site visits to recently constructed detention/law enforcement facilities in the southeast. The design of the facility responds to the operational requirements set by the user as it pertains to receiving and release, transport, bondsman, housing, visiting, recreation, canteen, program services, housing the sheriff's department, health services, food, laundry and maintenance. All of these issues were addressed while minimizing required staffing.

City of Brandon Police Station



JBHM was selected to design and administer renovation of the 12,000 square foot Police Station for the City of Brandon. A major renovation was implemented including a new roof, new mechanical and electrical components, and all new finishes. This facility houses all Police functions for the City as well as serving as the City's courthouse. The updated facility includes the courtroom, judge's chambers, police accommodations including interview rooms, holding cells and administrative services. The Brandon Police Station is located in Terrapin Park adjacent to the Brandon Public Library, which was a new construction by JBHM and won a 2004 ASID Design award. Also in the park is JBHM's award winning Terrapin Park Playground.

Long Beach City Hall



The original Long Beach City Hall Complex suffered significant damage during Hurricane Katrina from the onslaught of high winds, wind driven rain, and mold due to extended power loss. The new 15,500 square foot facility houses the following functions: the Water Department, Building Code Office, Records Storage, the Mayor's Office, City Administration, Civil Service, and the Municipal Court. A large community meeting room with a raised podium and platform was also included to accommodate meetings of the Municipal Court, Board of Aldermen, Planning Commission, and other public events. The new City Hall Complex is expected to aid in bolstering current businesses and assisting with future economic development efforts in the community.

The new building is 2-stories in height and features a wraparound porch at both floors. The new facility also has on-street and off-street parking accommodations for staff and the general public.

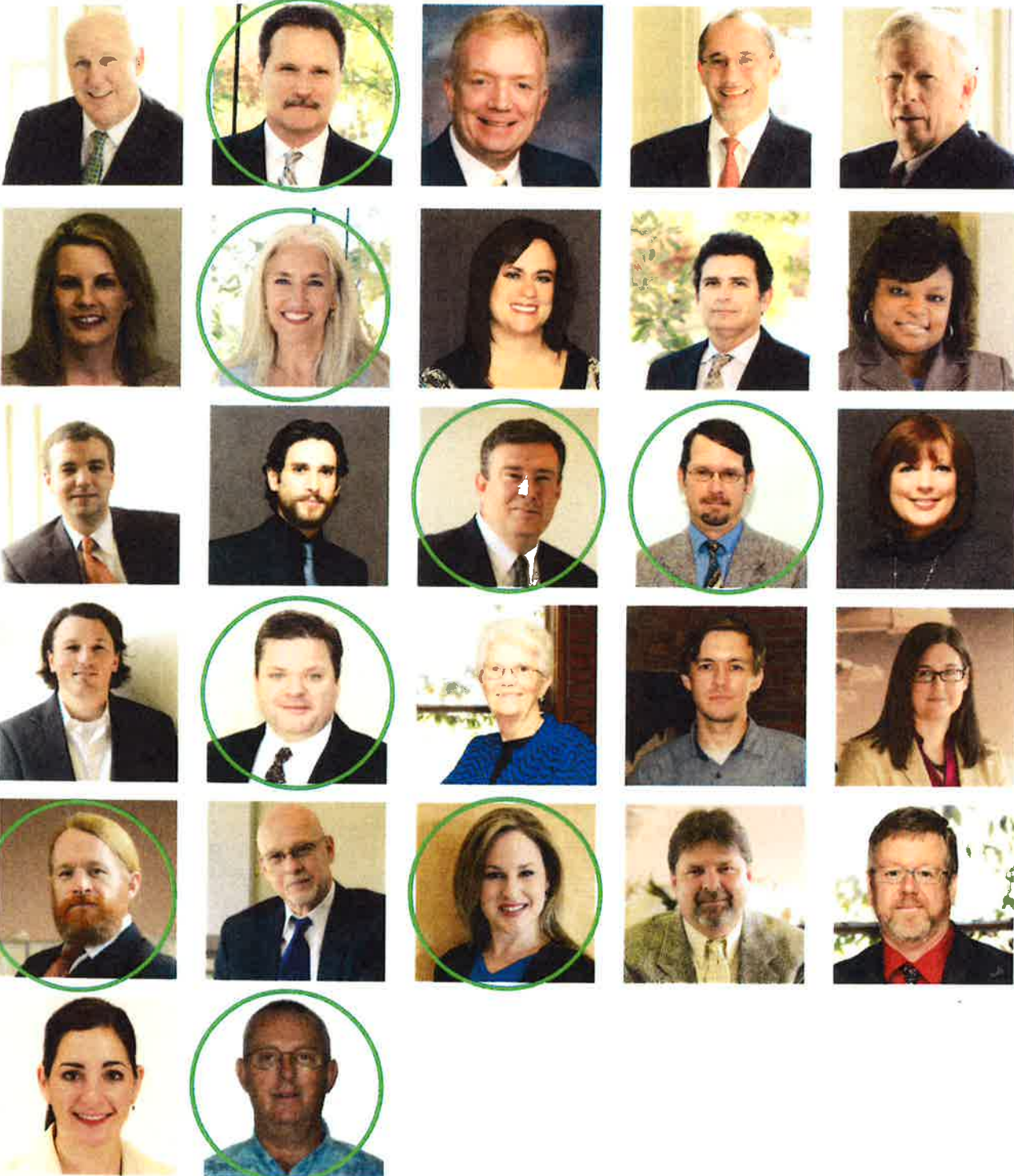
Lafayette County Chancery Building



JBHM was commissioned to design the Lafayette County Chancery Building located near the historic square of Oxford, Mississippi. As the square is the communal point of Oxford and where the County Courthouse is located, JBHM provided a facility that is consistent with the area architecture. The building contains two large court rooms for Chancery Court, a smaller courtroom for justice court and county court, judges' offices, jury rooms, witness rooms, the board room and offices of the Lafayette County Board of Supervisors, the Tax Collector's offices, the Tax Assessor's offices, and the County Planner's office. Large storage areas for records were also incorporated.

Capacity To Perform

Our firm consists of highly skilled architects, designers and technical personnel. Each is experienced in new project design, construction, and renovation. We combine our listening and design talents in order to assist the client in obtaining the product envisioned. JBHM has 29 full time designers: licensed architects, licensed landscape architects & planners, interior designers, and support staff. Your team is identified below but all of our staff is available to assist if needed.



Capacity To Perform

Estimated time to complete each phase of the project. Estimate does not include owner review time.:

Programming / Pre-Design	1.5 - 2.0 months
Preliminary Design Schedule	1.5-2.0 months
Design Development	1.5-2.0 months
Contract Documents	3.0-4.0 months
Advertise / Bids	1.0-1.5 months
Contracts / Etc	0.5-1.0 months
Issue Notice To Proceed	9 months - 12.5 months



Rankin County Juvenile Detention Facility