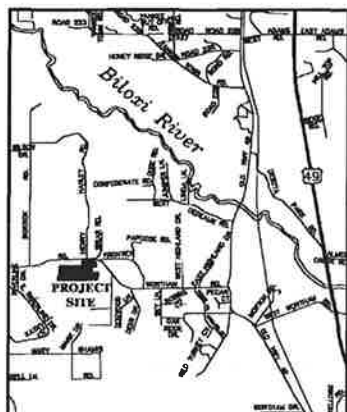
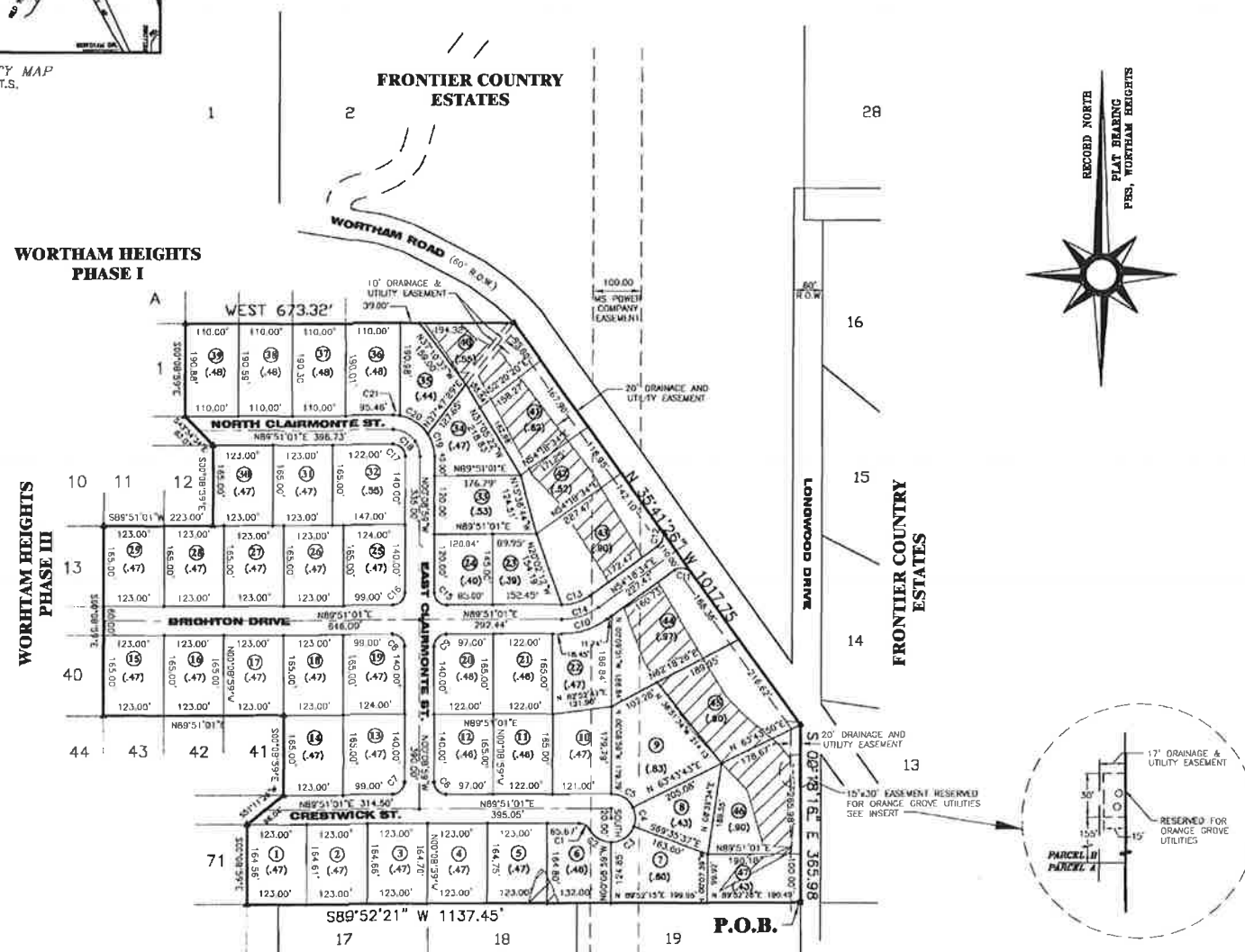


# FINAL PLAT OF WORTHAM HEIGHTS SUBDIVISION PHASE FOUR

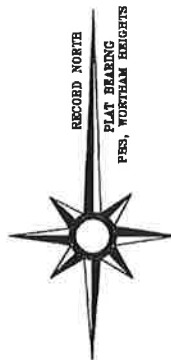
SECTION 35--TOWNSHIP 5 SOUTH--RANGE 12 WEST  
HARRISON COUNTY, MISSISSIPPI



VICINITY MAP  
N.T.S.



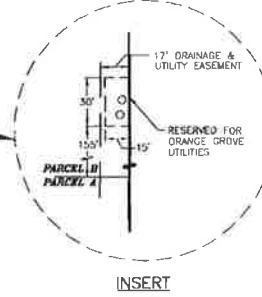
NUMBER	DELTA ANGLE	ARC LENGTH	RADIUS	CHORD DIRECTION	CHORD LENGTH
C1	62°10'39"	27.13	25.00	S 59°2'38" E	25.82
C2	62°10'39"	54.26	50.00	S 59°3'33" E	51.64
C3	69°26'33"	60.60	50.00	N 55°7'38" E	56.97
C4	46°40'23"	40.73	50.00	N 2°55'57" W	39.62
C5	63°52'24"	55.74	50.00	N 58°12'38" W	52.90
C6	90°00'01"	39.27	25.00	N 45°8'15" W	35.36
C7	90°00'01"	39.27	25.00	N 44°51'44" E	35.36
C8	90°00'01"	39.27	25.00	S 45°8'58" E	35.35
C9	90°00'01"	39.27	25.00	N 44°51'11" E	35.35
C10	35°32'29"	99.25	160.00	N 72°4'35" E	97.66
C11	90°00'01"	39.27	25.00	S 80°40'48" E	35.36
C12	90°00'01"	39.27	25.00	N 9°18'45" E	35.35
C13	35°32'26"	82.03	100.00	N 72°4'31" E	81.04
C14	35°32'26"	80.64	130.00	N 72°4'35" E	79.35
C15	90°00'01"	39.27	25.00	S 45°8'58" E	35.35
C16	90°00'01"	39.27	25.00	N 44°50'56" E	35.36
C17	90°00'01"	39.27	25.00	N 45°9'36" W	35.35
C18	90°01'01"	85.41	55.00	N 47°4'58" W	77.79
C19	33°35'20"	49.83	85.00	N 16°58'57" W	49.12
C20	46°33'28"	69.07	85.00	N 67°0'53" W	67.19
C21	9°51'18"	14.62	85.00	S 85°14'34" W	14.59



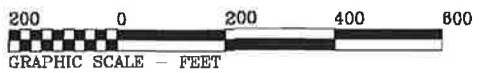
**LEGAL DESCRIPTION:**

A PARCEL OF LAND SITUATED IN THE W 1/2 OF THE SE 1/4, THE E 1/2 OF THE SW 1/4, & THE SW 1/4 OF THE SW 1/4 OF SECTION 35--55--12W, HARRISON CO., MS, AND BEING MORE FULLY DESCRIBED AS FOLLOWS:

COMMENCING AT A RAIL ROAD SPIKE WHICH IS THE NE CORNER OF LOT 19, FORREST OAKS S/D, SAID POINT ALSO BEING THE SE CORNER OF SECTION 35--55--12W, HARRISON CO., MS, AND IN THE R.O.W. OF LONGFELLOW DRIVE; THENCE N00°18'16"W ALONG LONGWOOD DRIVE 385.98' TO A POINT ON THE SOUTHWESTERLY MARGIN OF WORTHAM ROAD; THENCE N35°41'26"W ALONG THE SAID SOUTHWESTERLY MARGIN OF SAID ROAD 1017.75' TO A POINT; THENCE WEST 673.32' TO A POINT; THENCE S00°08'59"E 190.88' TO A POINT; THENCE S43°54'34"E 83.07' TO A POINT; THENCE S00°08'59"E 165.00' TO A POINT; THENCE S89°51'01"W 223.00' TO A POINT; THENCE S00°08'59"E 390.00' TO A POINT; THENCE N89°51'01"E 389.00' TO A POINT; THENCE S00°08'59"E 165.00' TO A POINT; THENCE S51°11'26"W 96.04' TO A POINT; THENCE S00°08'59"E 164.58' TO A POINT; THENCE N89°52'21"E 1137.45' TO THE POINT OF COMMENCEMENT; CONTAINING 28.80 ACRES OF LAND, MORE OR LESS.



**LEGEND:**  
 ○ -- IRON ROD SET (RS)  
 △ -- IRON ROD FOUND (RF)  
 ⊙ -- SPIKE FOUND (SF)  
 (P.O.B.) -- POINT OF BEGINNING  
 --- WET LANDS



**GENERAL NOTES:**

THIS SURVEY MEETS MISSISSIPPI MINIMUM REQUIREMENTS FOR A CLASS "B" SURVEY. THIS PROPERTY IS LOCATED IN F.I.R.M. MAP REVISED: AUGUST 4, 1988. FLOOD ZONE "C" PANEL #285255 0105 E

**NOTE:**

UNLESS OTHERWISE NOTED, ALL LOTS HAVE A 10' UTILITY EASEMENT ALONG FRONT LOT LINES AND A 10' DRAINAGE & UTILITY EASEMENT ALONG ALL REAR & SIDE LOT LINES.

**DUKE LEVY & ASSOCIATES, P.A.**  
 1711 WAVELAND AVENUE  
 WAVELAND, MS 39576  
 (228) 467-5212  
 FAX (228) 467-9949  
 PROFESSIONAL ENGINEERING & LAND SURVEYING

**WORTHAM HEIGHTS SUBDIVISION  
PHASE FOUR**

SCALE: 1"=200'	DATE: 04/19/01
W.O.# 99-161A-06	CRD FILE # 95-332
REVISED: 01-31-06	SHEET NO. 2 of 2